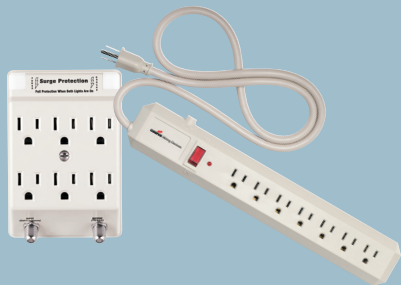




# E

## Accessories

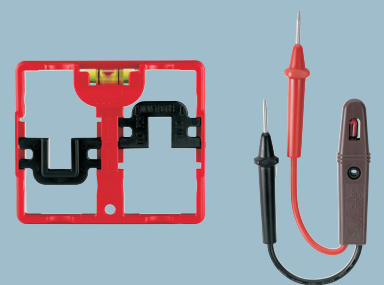
Cooper Wiring Devices offers a broad line of accessories for a wide range of needs throughout the home. Here you will find surge protection adapters, grounded and ungrounded outlet taps and adapters plus accessories used for device testing, installation and safety. All our accessories are manufactured to rigorous quality standards from high quality materials.



Surge Protection  
E-2



Taps & Adapters  
E-3



Accessories  
E-4

Surge Protection  
Adapters, Plug-In

2-Pole, 3-Wire Grounding  
15A, 125V/AC  
NEMA 5-15R



5-15R

## FEATURES

- Provides full three mode surge protection for hot to neutral, hot to ground and neutral to ground (except 1156CG).
- Center mounting screw provided for permanent attachment to receptacle.
- EMI/RFI filtering minimizes line noise.
- High impact-resistant thermoplastic for long-term durability.
- Coaxial protection provided with "F" type connectors.
- Telephone/fax/modem protection provided with RJ11-type telephone ports (4-wire protection).
- \$5,000 Connected Equipment Warranty on 1161CG, 1162CG and 1177CG.
- \$2,500 Connected Equipment Warranty on 1156CG.

Six Outlet Surge Adapters, Plug-In  
15A 125V/AC

Description	Joules/Max. Surge Current MCOV	Max. Surge Current	Color	Catalog No.
Full Protection	170J; 150V/AC; RMS	12kA/mode	Computer Gray	□ <b>1177CG</b>
Full Protection, with 2 Coaxial Jacks	170J; 150V/AC; RMS	12kA/mode	Computer Gray	□ <b>1161CG</b>
Full Protection, with 2 Telephone Jacks	170J; 150V/AC; RMS	12kA/mode	Computer Gray	□ <b>1162CG</b>
Basic Protection	170J; 150V/AC; RMS	12kA/mode	Computer Gray	□ <b>1156CG</b>

1161CG



Listed to UL1449, file no. E15054 &amp; CSA certified to C22.2, no. 42-99; NOM certified

Surge Protection  
Power Strip

2-Pole, 3-Wire Grounding  
15A, 125V/AC

## FEATURES

- Portable strip provides 7 surge-protected outlets for stereos, TVs, computers or other electronic-based equipment.
- Full mode surge protection for hot to neutral, hot to ground and neutral to ground.
- High impact-resistant thermoplastic for long-term durability.
- Supplied with 14/3 SJT 4' (1.22m) portable cord.
- On/off switch indicates power to unit.
- Resettable 15 amp circuit breaker.



1176V

Surge Protection Power Strip  
15A 125V/AC

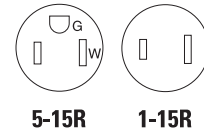
Description	Joules	Color	Catalog No.
Full Protection, 7 Outlet with Circuit Breaker, Cord Connected	70	Ivory	□ <b>1176V</b>

cULus Listed to UL498, file no. E303929

**Specification Information:** Please visit [www.cooperwiringdevices.com](http://www.cooperwiringdevices.com)

## Outlet Taps, Plug-In

2-Pole, 3-Wire Grounding  
 2-Pole, 2-Wire Non-Grounding  
 15A, 125V/AC  
 NEMA 5-15R, NEMA 1-15R



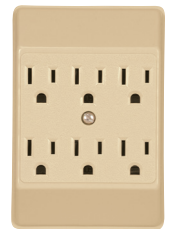
### FEATURES

- Molded of high impact-resistant plastic for long-term durability.
- Six outlet taps provide center mounting screw for permanent attachment to receptacle (1146 only).
- Lighted tap has long-life neon bulb built into body that lights when plugged in (1147LT only).
- Swivel adapters hug cords close to wall in tight-fitting places such as behind furniture and office equipment.
- Solid brass blades for long life and low heat rise at full load.
- Grounding adapters convert 2-pole polarized outlets to 3-wire grounding outlets; grounding lug fastens to wallplate mounting screw for excellent ground connection (419, 1219, SA483).

## Outlet Taps, Plug-In, NEMA 5-15

15A 125V/AC

Description	Color Suffix	Catalog No.
Six Outlet Tap, Duplex Receptacle to 6 Outlets	V, W	□ 1146__
Three Outlet Tap, Single Receptacle to 3 Outlets	B, V, W	□ 1147__
Lighted Three Outlet Tap, Single Receptacle to 3 Outlets	W	□ 1147LT__
Heavy Duty Three Outlet Tap, Single Receptacle to 3 Outlets	RN	□ 4402__
Three Outlet Cube Tap, Single Receptacle to 3 Outlets	B, V, W	□ 1482__
Swivel Three Outlet Tap, Single Receptacle to 3 Outlets	W	□ 1192__



1146



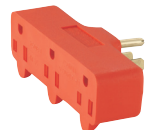
1147LT

cULus Listed to UL498, file no. E241182

## Outlet Taps, Plug-In, NEMA 1-15

15A 125V/AC

Description	Color Suffix	Catalog No.
Six Outlet Tap, Duplex Receptacle to 6 Outlets	V	□ 1746__
Three Outlet Tap, Single Receptacle to 3 Outlets	B, V, W	□ 1747__
Swivel Three Outlet Tap, Single Receptacle to 3 Outlets	V, W	□ 1792__
Three Outlet Cube Tap, Polarized, Single Receptacle to 3 Outlets	B, W	□ 4400__
Three Outlet Cube Tap, Single Receptacle to 3 Outlets	B, W	□ 400__



4402

cULus Listed to UL498, file no. E241182 (except 400)



1482

## Outlet Adapters, Plug-In, NEMA 1-15 to NEMA 5-15

15A 125V/AC

Description	Color Suffix	Catalog No.	
Single Outlet Grounding Adapter, with Grounding Lug	GY, W	□ 419__	
Three Outlet grounding Adapter, with Grounding Lug	B, V	□ 1219__	
Three Outlet Grounding Cube Adapter, with Grounding Lug	W	□ SA483__	•



1192

Listed to UL498, file no. E241182 (except SA483: file no. E15014)



419

**Color Ordering Information:** For ordering devices, include Cat. No. followed by the color code: B (Brown), GY (Gray), RN (Orange), V (Ivory), W (White)

**Specification Information:** Please visit [www.cooperwiringdevices.com](http://www.cooperwiringdevices.com)

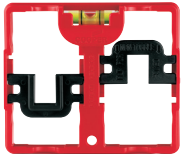
**NAFTA Compliant:** See page F-21

## G-Tool

## Multi-Gang Installation Tool

## FEATURES

- The only tool available that helps to align multi-gang installations.
- Wallplate fits without additional adjustment.
- Works with installations of 2 gangs or more.
- Adjusts to snap to any combination of devices – toggle, decorator and duplex.
- Built-in bubble level.
- Easy to use and easy to carry.
- Saves time and money.



G-TOOL

## G-Tool

Description	Color	Catalog No.
Multi-gang Installation Tool	Red	<input type="checkbox"/> G-TOOL

## Circuit Tester

## For AC or DC Electrical Circuits

## FEATURES

- For testing AC or DC electrical circuits.
- Detects the presence of power on either AC or DC circuits.
- Identifies circuit conductors.
- Rugged polycarbonate construction.



914

## Circuit Tester

Description	Color	Catalog No.
AC or DC Circuit Tester	Brown	<input type="checkbox"/> 914

 Listed to UL1436, file no. E143353

## Safety Caps

## Outlet Caps

## FEATURES

- Increases child safety by covering electrical outlets when not in use by restricting access to live parts.
- Constructed of impact-resistant thermoplastic.



29CL

## Safety Caps

Description	Color	Catalog No.
For NEMA 1-15 or NEMA 5-15 Outlets	Clear	<input type="checkbox"/> 29CL

 Listed to UL2255, file no. E13251

**Specification Information:** Please visit [www.cooperwiringdevices.com](http://www.cooperwiringdevices.com)

