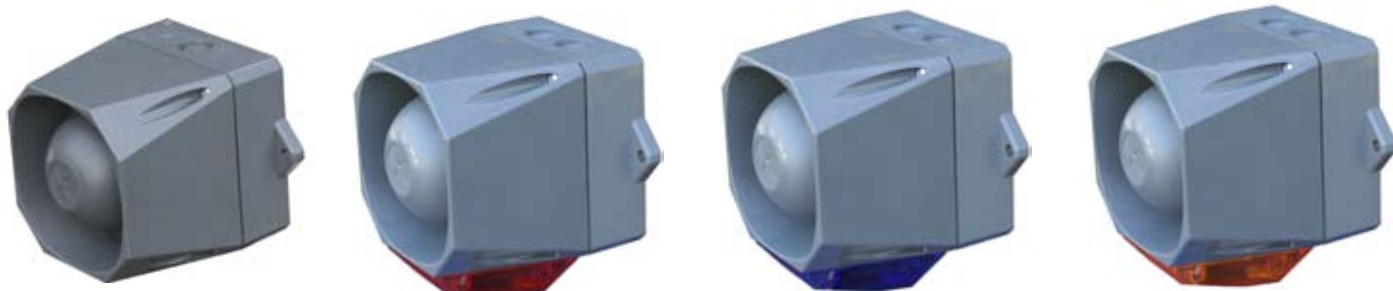


## Series MIN-T Audible and Audible Strobe



### Description:

The Series MIN Audible and Audible Strobe is a versatile and rugged alarm designed for indoor/outdoor environments or areas where there is a requirement for a physically robust and well protected unit. The series comes complete with 'normally closed' contacts that go open when the alarm is removed from its base to detect tampering.

### Features:

- Tamper contacts
- Low current draw
- Audible 7 to 56 mA
- Audible/Strobe 100 to 393 mA
- Up to 113 dB output
- Horn & Horn Strobe Models
- 32 tones, dip switch selectable
- 2 prioritized inputs for tones
- 9 to 60 VDC
- 13 to 158 F (-25°C ~ +70°C)
- NEMA 4 (IP 66)
- 23AWG ~ 14AWG
- 1 Hz flash rate - 40,000 candle power strobe
- Color: grey
- Strobe available in amber, red or blue

### Ordering Information:

Model Number	Order Code	Description
MIN-T	9087	Audible Signal, 32 Tones, 9-60 VDC, Grey
MIN-TA	9068	Audible Strobe, 32 tones, 9-60 VDC, Tamper, Amber Lens, Grey
MIN-TR	9069	Audible Strobe, 32 tones, 9-60 VDC, Tamper, Red Lens, Grey
MIN-TB	9086	Audible Strobe, 32 tones, 9-60 VDC, Tamper, Blue Lens, Grey



WE ENCOURAGE AND SUPPORT NICET CERTIFICATION  
 3 YEAR WARRANTY  
 MIN-T 03/08

**NJ Location**  
 273 Branchport Ave.  
 Long Branch, NJ 07740  
 P: 800-631-2148  
 F: 732-222-8707  
[www.coopernotification.com](http://www.coopernotification.com)

**FL Location**  
 7565 Commerce Ct.  
 Sarasota, FL 34243  
 P: 941-487-2300  
 F: 941-487-2389

**VA Location**  
 P: 877-459-7726  
 F: 703-294-6560

**Specification Information:**

Tone 1	Tone 2	Switch Settings	Sound	12 VDC			24 VDC			48 VDC					
				Audible mA	Audible dB(A)	Audible Strobe mA	Audible mA	Audible dB(A)	Audible Strobe mA	Audible mA	Audible dB(A)	Audible Strobe mA			
1	14	1111	800 & 970Hz	7	92	382	95	13	100	197	102	19	101	101	104
2	14	1110	800 & 970Hz	7	93	379	95	13	103	198	103	18	102	103	104
3	14	1101	800 & 970Hz	7	95	377	97	13	105	198	105	18	103	99	106
4	14	1100	2850Hz	18	97	385	100	28	104	223	107	53	106	185	109
5	4	11011	2400 ~ 2850Hz	19	102	376	104	32	111	224	111	57	111	178	113
6	4	11010	2400 ~ 2850Hz	19	104	378	105	33	112	223	113	57	112	156	114
7	14	11001	300 ~ 1200Hz	6	96	364	97	11	106	197	106	18	104	99	106
8	14	11000	1200 ~ 500Hz	8	96	375	97	15	105	118	107	22	104	165	106
9	4	10111	2400 & 2850Hz	17	100	393	101	30	109	220	108	54	108	158	110
10	14	10110	970Hz	5	93	366	95	9	102	195	103	13	101	96	104
11	14	10101	800 & 970Hz	6	92	364	95	13	102	195	103	19	101	137	104
12	4	10100	2850Hz	10	98	368	100	13	105	200	107	26	107	123	109
13	14	10011	970Hz	2	92	356	94	6	102	188	102	8	101	91	104
14	14	10010	970Hz	7	93	361	95	14	102	198	103	21	102	99	104
15	14	10001	554 & 440Hz	9	97	362	98	17	105	200	105	27	104	156	106
16	16	10000	660Hz	4	92	357	93	8	101	195	101	13	100	89	102
17	17	01111	660Hz	4	93	356	94	7	102	200	102	13	101	148	103
18	18	01110	660Hz	3	93	367	94	6	102	189	102	9	101	143	103
19	19	01101	660Hz	6	93	356	94	12	102	198	102	16	101	99	103
20	20	01100	554 & 440Hz	8	96	359	98	15	105	200	105	24	104	137	106
21	21	01011	660Hz	4	92	354	94	8	102	193	102	11	101	91	103
22	14	01010	2850Hz	12	97	361	100	19	104	210	106	37	105	140	109
23	14	01001	800 ~ 970Hz	7	93	354	94	13	103	197	103	19	101	97	104
24	4	01000	2400 ~ 2850Hz	19	102	368	103	32	110	202	110	56	110	188	112
25	25	00111	970Hz	4	93	358	95	7	102	194	103	13	101	130	104
26	26	00110	970 & 800Hz	4	94	354	95	7	104	196	104	8	102	143	105
27	27	00101	4000Hz	4	93	363	94	7	102	190	103	12	101	95	104
28	10	00100	800 & 970Hz	7	93	356	95	13	102	200	103	19	101	160	104
29		00011	990 & 650Hz	9	96	359	98	21	105	210	105	33	104	112	106
30	510Hz	00010	510 & 610Hz	9	96	356	98	17	104	202	104	26	104	116	106
31	31	00001	300 ~ 1200Hz	12	99	359	100	21	107	211	106	35	106	174	107

Note: dB(A) @ 1 Meter