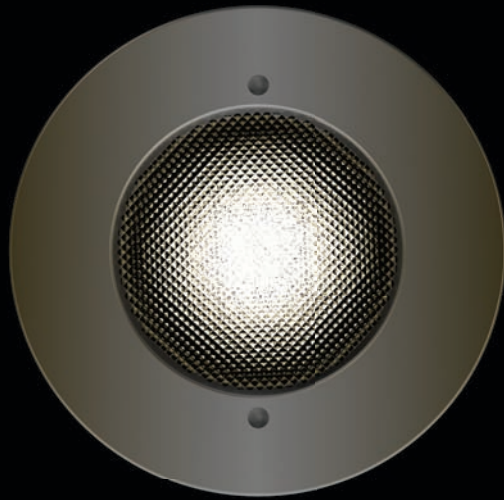


BOCA

Ingrade Low Voltage Lighting Products

BOCA 631



BOCA 631

- 4" Diameter Ingrade Drive Over
- 12V MR16 50W max.
- Temperature Reduction / Cool Lens Technology
- Recessed Mounting
- Optional Integral Transformer
- IP65 Rated

 Lumière



BOCA 631

Superior Ingrade uplighting in a small diameter recessed fixture

The BOCA 631 is a tiny 4" diameter ingrade fixture for use with low voltage MR16 lamps.

The fixed position beam provides a crisp white halogen light, perfect for uplighting or grazing vertical surfaces in constricted spaces.

The 631 includes a dual lens design which greatly reduces lens surface temperature making the fixture safe to walk on. The 631 is suited for recessed mounting in concrete, brick, stone or dirt and is rated for drive-over applications.

Cool Lens Technology

Lumière's new cool lens technology incorporates the use of a secondary, heat reflecting Temperature Reduction Lens (TRL) deep within the fixture body. The TRL is mounted in a separate extrusion within the sealed fixture body and reflects heat away from the top lens, greatly reducing lens temperatures.

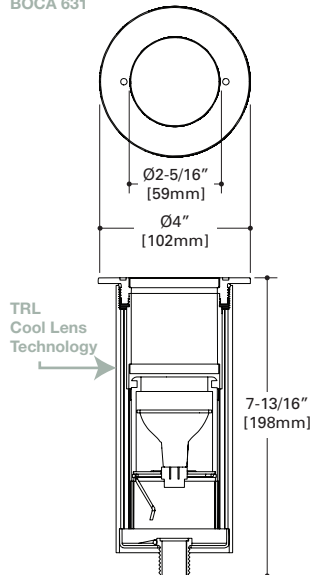
Fixtures are double protected by a chemical film undercoating and polyester powdercoat paint finish, surpassing the rigorous demands of the outdoor environment. A variety of standard finishes are available. Trim rings machined from stainless steel, brass, bronze, or copper are left unpainted to reveal the natural beauty of the material. Brass, bronze and copper will patina naturally over time.

Recessed housing is constructed from extruded aluminum. Trim ring is precision-machined from corrosion-resistant 6061-T6 aluminum, solid stainless steel, solid brass, solid bronze or solid copper. Recessed housing is available to ship in advance of complete fixture for rough-in purposes (specify option -LBB and order recessed housing separately).

Remote 12V transformer required (not included). Available from Lumière as an accessory.

UL and cUL listed, standard wet label. Manufactured to ISO 9001-2000 Quality Systems Standard. IP65 rated.

BOCA 631



ORDERING

FIXTURE

631 = BOCA Miniature Ingrade Fixture

SOURCE

50MR16 = 50W max. 12V MR16

VOLTAGE

12 = 12 Volts

FINISH

Painted

BK = Black

BZ = Bronze

CS = City Silver

VE = Verde

WT = White

Metal

NBR = Brass

NBZ = Bronze

NCP = Copper

NSS = Stainless Steel

OPTIONS

IT = Integral Transformer - (Consult factory)

T = Thermal Protector - (Consult factory)

LBB = Recessed housing shipped in advance

(for recessed housing shipped in advance, select LBB option and order housing separately from below:

631-BB = Recessed Housing

OPTICAL ACCESSORIES

F71 = Peach Dichroic Filter - 2.00" dia.

F72 = Amber Dichroic Filter - 2.00" dia.

F73 = Green Dichroic Filter - 2.00" dia.

F74 = Medium Blue Dichroic Filter - 2.00" dia.

F75 = Yellow Dichroic Filter - 2.00" dia.

F76 = Red Dichroic Filter - 2.00" dia.

F77 = Dark Blue Dichroic Filter - 2.00" dia.

F78 = Light Blue Dichroic Filter - 2.00" dia.

F79 = Neutral Density Dichroic Filter - 2.00" dia.

F80 = Magenta Dichroic Filter - 2.00" dia.

F22 = Red Color Filter - 2.00" dia.

F33 = Blue Color Filter - 2.00" dia.

F44 = Green Color Filter - 2.00" dia.

F55 = Yellow Color Filter - 2.00" dia.

F66 = Mercury Vapor Color Filter - 2.00" dia.

LSL = Linear Spread Lens, 2.00" Dia.

OSL = Overall Spread Lens, 2.00" Dia.

DIF = Diffused Lens, 2.00" Dia.

LVR = Hex Cell Louver, 2.00" Dia.

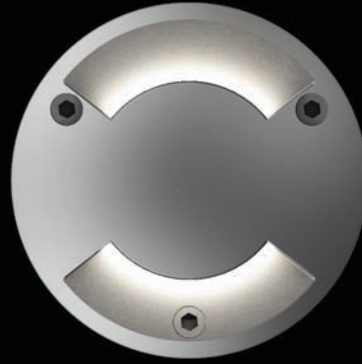
PROJECT NAME:

TYPE:

CATALOG #:

Specifications and dimensions subject to change without notice.

BOCA 650



BOCA 650

- 3 5/8" Diameter Ingrade
- 12V T3 20W max.
- Recessed Mounting
- One, Two, or Four Openings
- Remote Low Voltage Transformer Required
- IP67 Rated



BOCA 650

Multi-directional miniature round recessed fixtures

The BOCA 650 is a tiny 3-5/8" diameter in-grade fixture for use with a low voltage T3 lamp. The non-adjustable lamp is covered by a decorative trim with one, two or four openings offering a nice array of beam patterns and directions. Designed for recess mounting in concrete, brick, stone or dirt, it is suitable for walk-over applications. Suitable for installation indoors or outdoors.

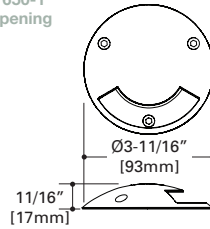
Recessed housing is injection molded from a corrosion-proof polymer. Inner housing and trim ring are die cast aluminum. Trim ring can also be precision machined from solid stainless steel, solid brass, solid bronze or solid copper. Recessed housing is available to ship in advance of complete fixture for rough-in purposes (specify option -LBB and order recessed housing separately).

Fixtures are double protected by a chemical film undercoating and polyester powdercoat paint finish, surpassing the rigorous demands of the outdoor environment. A variety of standard finishes are available. Trim rings machined from stainless steel, brass, bronze, or copper are left unpainted to reveal the natural beauty of the material. Brass, bronze and copper will patina naturally over time.

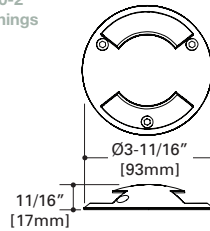
Remote 12V transformer required (not included). Available from Lumière as an accessory. The fixture comes standard with a 12 inch jacketed cable for easy installation.

UL and cUL listed, standard wet label. Manufactured to ISO 9001-2000 Quality Systems Standard. IP67 rated.

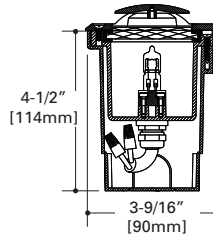
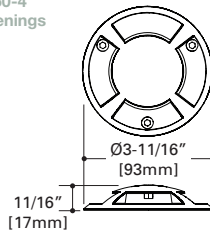
BOCA 650-1
One Opening



BOCA 650-2
Two Openings



BOCA 650-4
Four Openings



ORDERING

FIXTURE

- 650-1= BOCA Round Miniature Pathway Fixture - Single Opening
- 650-2= BOCA Round Miniature Pathway Fixture - Dual Opening
- 650-4= BOCA Round Miniature Pathway Fixture - Quad Opening

SOURCE

20T3 = 20W max. 12V T3 Bi-Pin

VOLTAGE

12 = 12 Volts

FINISH

Painted

- BK = Black
- BZ = Bronze
- CS = City Silver
- VE = Verde
- WT = White

Metal

- NBR = Brass
- NBZ = Bronze
- NCP = Copper
- NSS = Stainless Steel

OPTIONS

- LBB = Recessed housing shipped in advance
(for recessed housing shipped in advance, select LBB option and order housing separately from below:
650-BB = Recessed Housing

PROJECT NAME:

TYPE:

CATALOG #:

Specifications and dimensions subject to change without notice.

BOCA 655/660



BOCA 655 / 660

- 5 1/4" Ingrade or 7 1/2" Ingrade
- 12V MR16 37W max. or 12V AR111 35W max.
- Recessed Mounting
- Round or Square Shapes
- Stainless Steel Construction Standard
- 360° Rotation and +/- 15° Tilt Adjustment
- IP67 Rated

Lumière



BOCA 655 / 660

Adjustable ingrade fixtures for MR16 or AR111 sources

The BOCA 655 & 660 are ingrade fixtures available in 5-1/4" (655) round or square forms for use with a low voltage MR16 lamp, or in 7-1/2" (660) for use with a low voltage AR111 lamp. The adjustable lamp assembly provides up to 15° vertical tilt and 360° horizontal rotation for precision uplighting, wall washing or general illumination in constricted areas. Designed for recess mounting in concrete, brick, stone or dirt it is suitable for walk-over and drive-over applications. Suitable for installation indoors or outdoors.

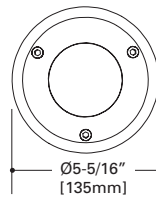
Recessed housing is injection molded from a corrosion-proof polymer. Inner housing is die cast aluminum. Trim ring is precision machined from solid stainless steel, solid brass, solid bronze or solid copper. Recessed housing is available to ship in advance of complete fixture for rough-in purposes (specify option -LBB and order recessed housing separately).

Trim rings machined from stainless steel can be painted with a polyester powdercoat paint finish or can be left in their original premium state revealing the natural beauty of stainless steel. Either way, the end result surpasses the rigorous demands of the outdoor environment. A variety of standard finishes are available. Trim rings machined from brass, bronze or copper are left unpainted to reveal the natural beauty of the material. Brass, bronze and copper will patina naturally over time.

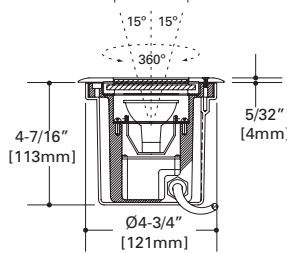
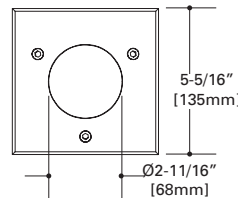
Remote 12V transformer required (not included). Available from Lumière as an accessory. The fixture comes standard with a 12 inch jacketed cable for easy installation.

UL and cUL listed, standard wet label. Manufactured to ISO 9001-2000 Quality Systems Standard. IP67 rated.

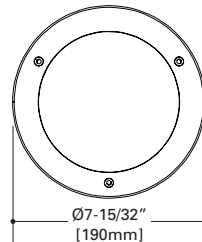
BOCA 655 Round



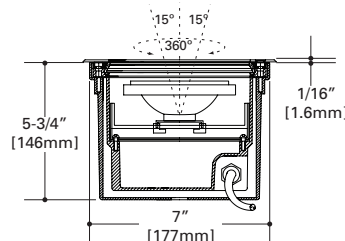
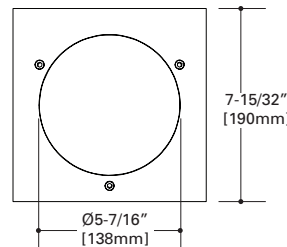
BOCA 655 Square



BOCA 660 Round



BOCA 660 Square



ORDERING

FIXTURE

- 655-RD= BOCA Round Adjustable Ingrade Fixture - for MR16
- 655-SQ= BOCA Square Adjustable Ingrade Fixture - for MR16
- 660-RD= BOCA Round Adjustable Ingrade Fixture - for AR111
- 660-SQ= BOCA Square Adjustable Ingrade Fixture - for AR111

SOURCE

- 37MR16 = 37W max. 12V MR16 (655)
- 35AR111 = 35W max. 12V AR111 (660)

VOLTAGE

12 = 12 Volts

FINISH

Painted

- BK = Black
- BZ = Bronze
- CS = City Silver
- VE = Verde
- WT = White

Metal

- NBR = Brass
- NBZ = Bronze
- NCP = Copper
- NSS = Stainless Steel

OPTIONS

- LBB = Recessed housing shipped in advance (for recessed housing shipped in advance, select LBB option and order housing separately from below:
 - 655-BB = Recessed Housing
 - 660-BB = Recessed Housing

OPTICAL ACCESSORIES - MR16 Only

- F71 = Peach Dichroic Filter - 2.00" dia.
- F72 = Amber Dichroic Filter - 2.00" dia.
- F73 = Green Dichroic Filter - 2.00" dia.
- F74 = Medium Blue Dichroic Filter - 2.00" dia.
- F75 = Yellow Dichroic Filter - 2.00" dia.
- F76 = Red Dichroic Filter - 2.00" dia.
- F77 = Dark Blue Dichroic Filter - 2.00" dia.
- F78 = Light Blue Dichroic Filter - 2.00" dia.
- F79 = Neutral Density Dichroic Filter - 2.00" dia.
- F80 = Magenta Dichroic Filter - 2.00" dia.
- F22 = Red Color Filter - 2.00" dia.
- F33 = Blue Color Filter - 2.00" dia.
- F44 = Green Color Filter - 2.00" dia.
- F55 = Yellow Color Filter - 2.00" dia.
- F66 = Mercury Vapor Color Filter - 2.00" dia.
- LSL = Linear Spread Lens, 2.00" Dia.
- OSL = Overall Spread Lens, 2.00" Dia.
- DIF = Diffused Lens, 2.00" Dia.
- LVR = Hex Cell Louver, 2.00" Dia.

PROJECT NAME:

TYPE:

CATALOG #:

Specifications and dimensions subject to change without notice.

Lumière

4675 Holly Street
Denver, CO 80216

P: 303-393-1522
F: 303-393-1477

Cooper Lighting, LLC.

Customer First Center
1121 Highway 74 South
Peachtree City, GA 30269

P: 770-486-4800
F: 770-486-4801

www.cooperlighting.com

International Sales, USA

Cooper Lighting, LLC.
1121 Highway 74 South
Peachtree City, GA 30269

P: 770-486-4800
F: 770-486-4801

Canada

Cooper Lighting, LLC.
5925 McLaughlin Road
Mississauga, Ontario L5R 1B8

P: 905-507-4000
F: 905-568-7049

The Cooper Lighting Family

Halo
Metalux
Lumark
Sure-Lites
Neo-Ray
Corelite
Portfolio
Iris
Shaper
io
Lumière
Invue
McGraw-Edison
Streetworks
Fail-Safe
PDS
MWS
RSA
Ametrix

Domestic Facilities

Cranbury, New Jersey
Elk Grove Village, Illinois
Irving, Texas
Ontario, California
Peachtree City, Georgia

Canadian Facility

Calgary, Alberta T2E 7V9
Mississauga, Ontario L5R 1B8

Cooper Lighting and Lumière logos are valuable trademarks of Cooper Industries in the United States and other countries. You are not permitted to use the Cooper Trademarks without the prior written consent of Cooper Industries.

Cooper Industries, Ltd.
600 Travis, Ste. 5800
Houston, TX 77002-1001
P: 713-209-8400
www.cooperindustries.com