

# LIGHTBAR™ TECHNOLOGY

## ENERGY SAVINGS + ENVIRONMENTAL STEWARDSHIP

The simplest and most effective way to reduce a lighting fixture's impact on the environment is to minimize its energy consumption. By incorporating Cooper Lighting's patented LED LightBAR™ technology, Mesa LED provides energy savings between 40-72% over standard HID and CFL sources.

## LONG LIFE

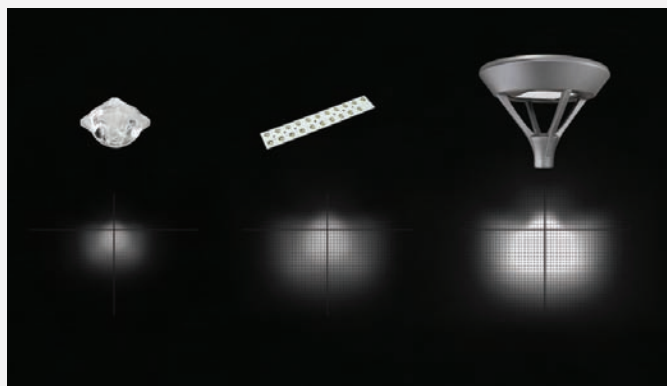
With a 50,000+ hour rated life at 70% lumen maintenance, Mesa LED operates six [6] times longer than traditional Metal Halide sources.



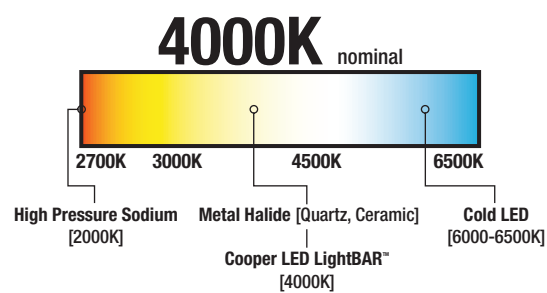
PATENTS PENDING

## SCALABLE ILLUMINATION

## WARM WHITE COLOR



Each patented LED LightBAR™ optic renders the entirety of the pattern. As the number of LightBAR™ elements increase so does the application illuminance, allowing lumen and energy output to be scaled and optimized per application. Obrusive spill light and glare is replaced by uniform, application specific illumination.



Lighting Designers, Architects and Specifying Engineers have long preferred light sources which provide a balanced spectral power distribution and warm white light. Typical LED solutions standardize on a cold blue 6000-6500K correlated color temperature [CCT] to maximize lumen output. Mesa LED provides warm white light at a standard 4000K CCT with no sacrifice in lumen output.

## AccuLED Optics™



## SUPERIOR EFFICIENCY + CONTROL

With efficiencies as high as 95%, patented AccuLED Optics™ systems are as much as 30% more efficient than traditional HID optical systems. Available in twelve [12] beam distributions, AccuLED Optics™ systems provide the flexibility and performance required for any outdoor application.

# MESA LED

## ORDERING INFORMATION

SAMPLE NUMBER: MSA-B06-LED-E1-T3-BK

PRODUCT FAMILY	NUMBER OF LIGHTBARS <sup>1,2</sup>	LAMP TYPE	VOLTAGE	DISTRIBUTION	FINISH <sup>3</sup>	OPTIONS + ACCESSORIES [see below]
MSA=Mesa [Slip-fits Over 3" OD Tenon]	B01=[1] 21 LED LightBAR B02=[2] 21 LED LightBARs B03=[3] 21 LED LightBARs B04=[4] 21 LED LightBARs B05=[5] 21 LED LightBARs B06=[6] 21 LED LightBARs C01=[1] 7 LED LightBAR C02=[2] 7 LED LightBARs C03=[3] 7 LED LightBARs C04=[4] 7 LED LightBARs C05=[5] 7 LED LightBARs C06=[6] 7 LED LightBARs	LED=Solid State Light Emitting Diodes	E1=Electronic [120-277V] 347=347V 480=480V	T2=Type II T3=Type III T4=Type IV 5MQ=Type V Square Medium 5WQ=Type V Square Wide 5XQ=Type V Square Extra Wide RW=Rectangular Wide SL2=Type II w/Spill Control SL3=Type III w/Spill Control SL4=Type IV w/Spill Control SL=90° Spill Light Eliminator Left SLR=90° Spill Light Eliminator Right	BK=Black AP=Grey BZ=Bronze WH=White DP=Dark Platinum GM=Graphite Metallic	

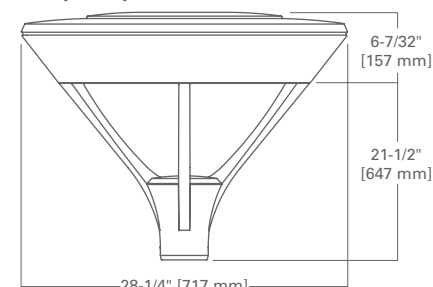
## OPTIONS + ACCESSORIES [Must be listed in the order shown and separated by a dash]

OPTIONS <sup>4</sup>	ACCESSORIES <sup>8</sup>
PC=Button Type Photocell [Specify Voltage]	VA6028-XX=Dual Mount Arm
R=NEMA Photocontrol Receptacle	VA6029-XX=Wall Mount Arm
2L=Bi-Level Switching <sup>5</sup>	OA/RA1016=NEMA Photocontrol - Multi-Tap
LCF=LightBAR Cover Plate Matches Housing Finish	OA/RA1027=NEMA Photocontrol - 480V
7060=70 CRI / 6000K CC <sup>6</sup>	OA/RA1201=NEMA Photocontrol - 347V
8030=80 CRI / 3000K CC <sup>6</sup>	MA1253=10kV Circuit Module Replacement
ICB=Integral Cold Weather Battery Pack [Specify 120V or 277V] <sup>7</sup>	

NOTES: 1 Standard 4000 K CCT and nominal 70 CRI. 2 21 LED LightBAR powered at 350mA, 7 LED LightBAR powered at 1A. 3 Custom and RAL color matching available upon request. Consult your customer service representative for further information. 4 Add as suffix in the order shown. 5 Low-level output varies by bar count. Consult factory. Requires quantity two or more LightBARs. 6 Consult customer service for lead times and lumen multiplier. 7 Available with B01 - B04 or C01 - C04 configurations only. Specify 120 or 277V. LED cold weather integral battery pack is rated for minimum operating temperature -4°F (-20°C). Operates (1) lightbar for 90 minutes. Not available in all configurations, consult factory. Rated for use in 25°C ambient. 8 Order separately. 9 Specifications and dimensions subject to change without notice.

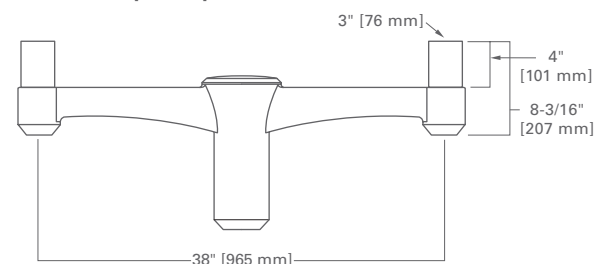
## DIMENSIONS

Mesa [EPA 1.1]

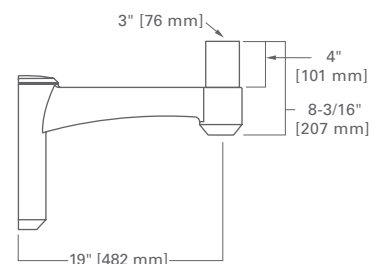


## MOUNTING OPTIONS

Dual Mount Arm [EPA 1.36]



Wall Mount Arm



## CERTIFICATIONS

UL and cUL Listed  
ISO 9001  
2G Vibration Rated  
IP66 LightBARs  
LM79 / LM80 Compliant  
AARA Compliant

## ENERGY DATA

Electronic LED Driver  
>0.9 Power Factor  
<20% Total Harmonic Distortion  
120-277V/50 & 60Hz, 347V/60Hz, 480V/60Hz  
40°C Ambient Temperature Rating  
-30°C Minimum Temperature

## AMBIENT DATA

Ambient Temperature	Lumen Multiplier
10°C	1.04
15°C	1.03
25°C	1.00
40°C	0.96

## SHIPPING DATA

Approximate Net Weight  
1-6 Bars 50 [22.73 kgs.]



25% PCRF

Cooper Lighting, Invue, Mesa, SustainabLEDesign, LightBAR and AccuLED Optics are valuable trademarks of Cooper Industries in the United States and other countries. You are not permitted to use the Cooper Trademarks without the prior written consent of Cooper Industries.

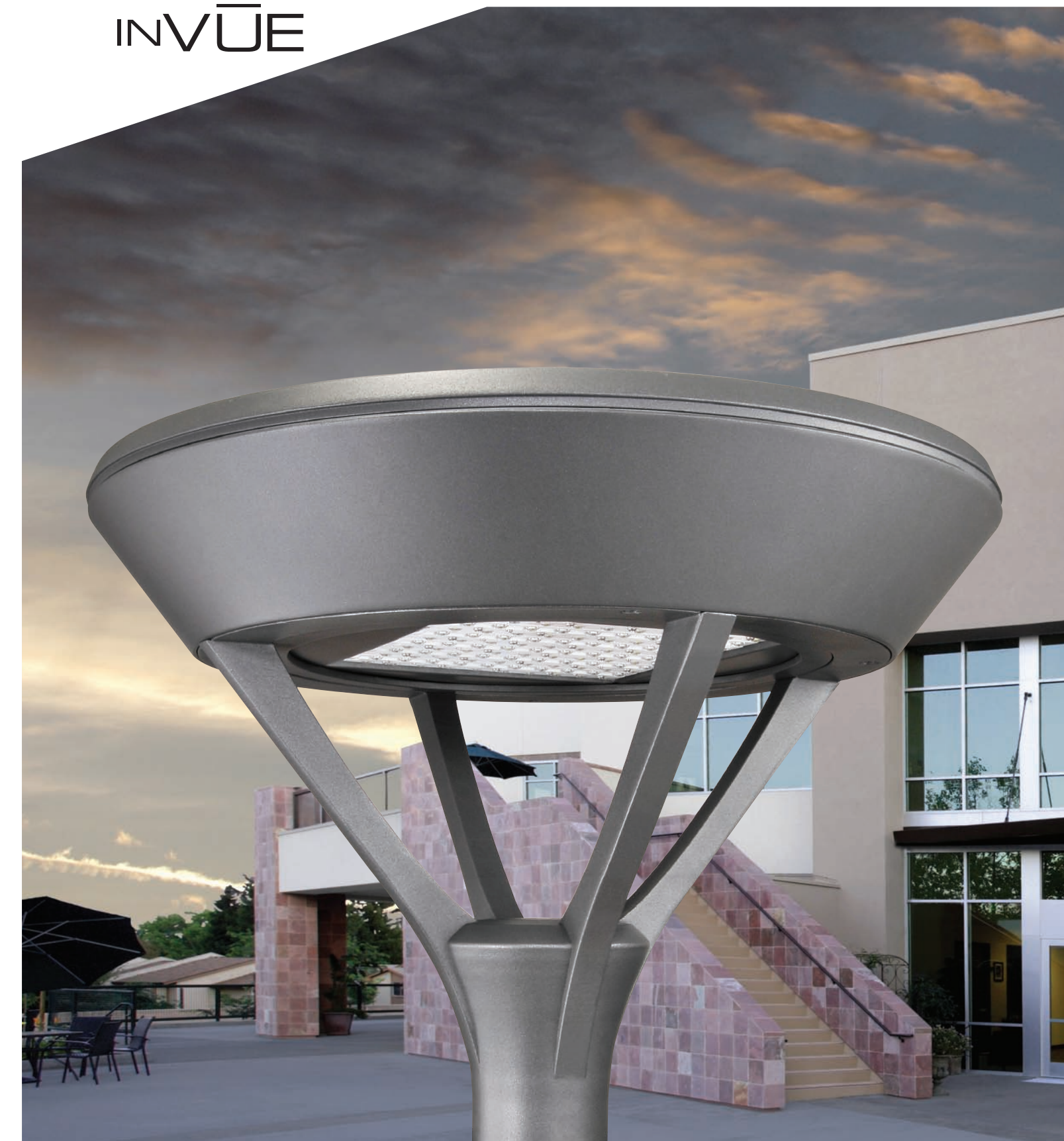
Cooper Lighting, LLC  
1121 Hwy 74 South  
Peachtree City, Georgia 30269  
P: 770-486-4800  
www.cooperlighting.com

AVU111437

Printed in USA

COOPER Lighting

# INVUE



Sustainable Design

Mesa LED  
Decorative Area Luminaire

COOPER Lighting

# INNOVATION CENTER



INNOVATION IN ACTION



The Cooper name has stood for innovation, service and expertise for over 175 years. Today, Cooper Lighting's LED Innovation Center is home to the design, validation and manufacturing of proprietary LED technologies. Through changing times and technologies, Cooper answers the call to provide relevant, industry-leading solutions to evolving market needs.

BEST-IN-CLASS DESIGN + RELIABILITY



Precision design practices and rigorous reliability testing result in dependable luminaries that thrive in outdoor environments. Mesa LED is rated for operation in -30°C to 40°C ambient environments, comes equipped with 10kV transient surge protection and is backed by a five-year warranty from a world class manufacturer.

# FEATURES + BENEFITS

## STANDARD PRODUCT FEATURES

- [+] Durable Die-Cast Construction
- [+] Extruded Aluminum Heat Sinks
- [+] 10kV Circuit Protection
- [+] Electronic Universal Drivers
- [+] Quick Disconnect Wire Connections
- [+] Replaceable LightBARs + Drivers
- [+] Industry Leading Optics
- [+] Easy Access Top Door
- [+] Tool-less Removable Powertray
- [+] Removable + Rotatable Optic Tray



## ARCHITECTURAL FORM

Mesa LED creates a powerful yet elegant statement in modern lighting design. Well suited for both contemporary and traditional architectural settings, Mesa LED transcends the industry norm with an appealing geometric form and bold transitional design features. Mesa LED is well suited for area lighting, pedestrian and egress applications.



## ENERGY SAVING + CONTROL OPTIONS

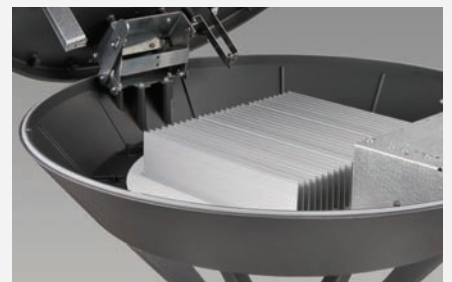
Mesa LED provides up to 72% energy savings over traditional lamp sources. Additional energy savings is possible through bi-level switching [2L], allowing up to 50% additional energy savings with no compromise in distribution uniformity. Mesa LED is available with an optional button photocell [PC].

## POWER AND LUMENS BY NUMBER OF LIGHTBARS

Number of LightBARs	Power [Watts]	DISTRIBUTION										
		T2	T3	T4	SL2	SL3	SL4	5MQ	5WQ	5XQ	RW	SLR/SLL
7 LED LIGHTBAR												
C01	27	1,708	1,709	1,668	1,718	1,668	1,675	1,845	1,770	1,791	1,701	1,609
C02	54	3,291	3,294	3,215	3,311	3,214	3,228	3,556	3,412	3,451	3,277	3,102
C03	77	4,751	4,755	4,641	4,779	4,640	4,660	5,133	4,925	4,982	4,731	4,478
C04	101	6,270	6,276	6,125	6,308	6,124	6,151	6,775	6,500	6,575	6,244	5,910
C05	131	7,508	7,515	7,334	7,553	7,333	7,365	8,112	7,783	7,873	7,477	7,076
C06	154	9,086	9,094	8,875	9,140	8,874	8,913	9,817	9,419	9,528	9,048	8,563
21 LED LIGHTBAR												
B01	27	2,101	2,102	2,052	2,113	2,052	2,061	2,269	2,177	2,203	2,092	1,980
B02	51	4,048	4,052	3,954	4,072	3,954	3,971	4,374	4,196	4,245	4,031	3,815
B03	73	5,844	5,849	5,708	5,879	5,707	5,732	6,314	6,058	6,128	5,820	5,507
B04	95	7,712	7,720	7,534	7,759	7,533	7,566	8,333	7,995	8,087	7,681	7,269
B05	124	9,235	9,243	9,021	9,290	9,020	9,059	9,978	9,573	9,684	9,197	8,703
B06	146	11,176	11,186	10,917	11,243	10,915	10,963	12,075	11,585	11,719	11,130	10,533

## FINISH

Finished in Super durable TGIC polyester powder coat paint. Six [6] standard colors. RAL and custom colors available.



## MAINTENANCE + SUSTAINABILITY

Mesa LED offers easy access through a top-access door, which features a concealed four-bar hinge that retains and locks the door in the opened position and offers full access to all internal components.



## OPTICAL EXCELLENCE

Optical efficiency and control is provided through precision designed AccuLED Optics™ that focus light onto the application region. Mesa LED is available in one [1] to six [6] LightBAR™ configurations with a choice of twelve [12] industry leading distributions including a family of spill light eliminator optics [SL] to drastically reduce spill light behind the luminaire. LightBARs™ feature an IP66 enclosure rating.

## MOUNTING

Mesa LED mounts onto a 3" O.D. tenon in post top mount applications, blending seamlessly with 4" O.D. poles. Dual mount and wall mount arm accessories available.

