

EBPLED7W/EBPLED14W Battery Pack



Product Feature	Customer Benefit	Certification / Warranty
Field installable	Meet emergency code with no aesthetic impact	UL 924 Classified for field installation
Satisfies all wiring configurations as conduit and test button are included	Design ease; less SKU's to stock	NFPA/NEC/OSHA/CEC code compliant
7 watt or 14 watt output creates 600 to 2500 lumens in emergency mode	Design flexibility; superior egress coverage	Guaranteed compatibility w/ Eaton Fixtures
Laser test feature enables simplified NFPA testing	Labor savings on NFPA/OSHA required testing	5 year product warranty

APX/APX7H Polycarbonate Exit



Product Feature	Customer Benefit	Certification / Warranty
LED source with nickel cadmium battery	Up to 10 years with no maintenance	UL 924 damp location listed
Red or Green LED illumination	Design flexibility	NFPA/NEC/OSHA/CEC code compliant
Universal mount; single or double sided	Design flexibility	5 year product warranty
Optional remote capacity to drive 2 or 4 LED heads (H version)	Design flexibility; labor and material savings	7 year prorated battery warranty

APC7/APC7H Polycarbonate LED Combo



Product Feature	Customer Benefit	Certification / Warranty
LED source with nickel cadmium battery	Up to 10 years with no maintenance	UL 924 damp location listed
Red or Green LED illumination	Design flexibility	NFPA/NEC/OSHA/CEC code compliant
Universal mount; single or double sided	Design flexibility	5 year product warranty
LED emergency heads	Design flexibility; labor and material savings	7 year prorated battery warranty
Optional remote capacity to drive 2 LED heads (H version)	Design flexibility; labor and material savings	

APEL/APELH2 Polycarbonate LED Emergency



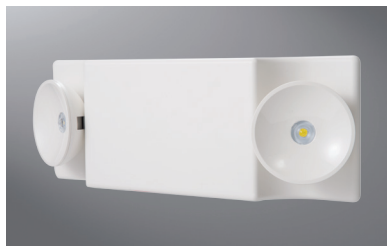
Product Feature	Customer Benefit	Certification / Warranty
LED source with nickel cadmium battery	Up to 10 years with no maintenance	UL 924 damp location listed
Adjustable heads	Design flexibility	NFPA/NEC/OSHA/CEC code compliant
Optional remote capacity to drive 2 LED heads (H2 version)	Design flexibility; labor and material savings	5 year product warranty
		7 year prorated battery warranty

APWR1/APWR2 Indoor/Outdoor Polycarbonate LED Remote



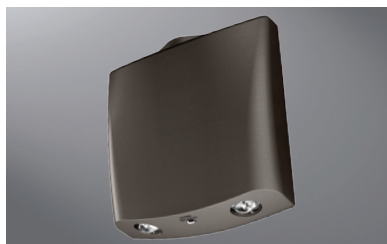
Product Feature	Customer Benefit	Certification / Warranty
LED source	Up to 10 years with no maintenance	UL 924 wet location listed
Adjustable heads	Design Flexibility	NFPA/NEC/OSHA/CEC code compliant
Outdoor rated	Design flexibility; less SKU's to stock	5 year product warranty

SEL Polycarbonate LED Emergency



Product Feature	Customer Benefit	Certification / Warranty
Up to 60 feet of egress coverage	Up to \$300 savings on installation	UL924 damp location
LED source with Nickel cadmium battery	Up to ten years with no maintenance	NFPA/NEC/OSHA/CEC code compliant
Optional remote capacity (SRP/SRM remotes)	Indoor, outdoor design flexibility	5-year product warranty
Self diagnostics w/laser test option	Labor savings on NFPA/OSHA required testing	7-year prorated battery warranty

SELW Polycarbonate Outdoor LED Emergency



Product Feature	Customer Benefit	Certification / Warranty
LED source with Nickel cadmium battery	Up to ten years with no maintenance	UL924 wet location
Forward throw optic	Maximum design flexibility	NFPA/NEC/OSHA/CEC code compliant
Up to 29 feet of egress coverage	Design flexibility; superior egress coverage	5-year product warranty
Self diagnostics w/laser test option	Labor savings on NFPA/OSHA required testing	7-year prorated battery warranty

LPX Polycarbonate / CX Die Cast Exit



Product Feature	Customer Benefit	Certification / Warranty
LED source with Nickel cadmium battery	Up to ten years with no maintenance	UL924 damp location listed
Field adjustable for red or green / universal mount	Maximum design flexibility; less SKU's to stock	NFPA/NEC/OSHA/CEC code compliant
Optional remote capacity (SRP/SRM remotes)	Indoor/outdoor design flexibility	5-year product warranty
Self diagnostics with laser test option	Labor savings on NFPA/OSHA required testing	7-year prorated battery warranty

SELDW Industrial LED Emergency



Product Feature	Customer Benefit	Certification / Warranty
LED source with Nickel cadmium battery	Up to ten years with no maintenance	UL924 wet location listed
Up to 60 feet of egress coverage	Fixture cost savings - less fixtures required	NEMA 4X/IP66/NSF
Self diagnostics with laser test standard	Labor savings on NFPA/OSHA required testing	NFPA/NEC/OSHA/CEC code compliant
NEMA 4X; IP66; - 30° C to 50° C temp range	Maximum design flexibility; less SKU's to stock	HAZ (class 1, Div 2) option
		5-year product warranty
		7-year prorated battery warranty

UX Industrial Exit



Product Feature	Customer Benefit	Certification / Warranty
LED source with Nickel cadmium battery	Up to ten years with no maintenance	UL924 wet location listed
Field adjustable for red or green/universal mount	Maximum design flexibility; less SKU's to stock	NEMA 4X/IP66/NSF
Self diagnostics with laser test standard	Labor savings on NFPA/OSHA required testing	NFPA/NEC/OSHA/CEC code compliant
NEMA 4X; IP66; - 30° C to 50° C temp range	Maximum design flexibility; less SKU's to stock	HAZ (class 1, Div 2) option
		5-year product warranty
		7-year prorated battery warranty

Eaton
1121 Highway 74 South
Peachtree City, GA 30269
P: 770-486-4800
www.eaton.com/lighting

Canada Sales
5925 McLaughlin Road
Mississauga, Ontario L5R 1B8
P: 905-501-3000
F: 905-501-3172

© 2017 Eaton
All Rights Reserved
Printed in USA
Publication No. SA518019EN
June 14, 2017 8:33 AM

Eaton is a registered trademark.

All other trademarks are property of their respective owners.

Product availability, specifications, and compliances are subject to change without notice.