

Vandal Resistant LED Wall Packs

Selection Guide

Fail-Safe

Market focused portfolio with products designed for broad applications

Value - competitive pricing in the industry

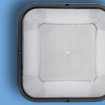
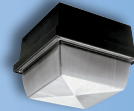
Performance - market leading performance with industry ratings and certifications to meet the most stringent application requirements

Click on products to learn more

Good

Better

Best



		B95	H12	G12	TR11	TR15	FW
APPLICABILITY¹	Behavioral Health	★★	★★	★★	★★★		★★★
	Outdoor Vandal Resistant	★★★	★★★	★★★	★★★		★★★
	Indoor Vandal Resistant	★★	★★	★★	★★★		★★
	Industrial High Abuse	★★★	★★★	★★★	★★★		★★★
	Multifamily homes	★★	★★	★★	★★★		★★★
MOUNTING	Wall	✓	✓	✓	✓		✓
	Ceiling	✓	✓	✓	✓		N/A
FEATURES	Size	5" x 9" Rectangle	12" x 12" Square	12" x 12" Square	11" Round	15" Round	6" x 12", 12" x 6", 9" x 9", 12" x 12"
	Maximum Lumen Output	1,975	4,703	3,750	2,630	4,875	2,500
	Lens Thickness	0.130"	0.156"	0.130"	0.125"		0.125"
	Emergency	N/A	Optional	Optional	Optional		Optional
	Occupancy	N/A	Optional	Optional	Optional		Optional
	Photocell	Optional	Optional	Optional	Optional		N/A
CERTIFICATIONS	IP	IP65	IP65	IP65	IP65		IP65
	Wet Location	Standard	Standard	Standard	Standard		Standard

Notes: 1. ★★★ = high applicability, ★★ = medium applicability, ★ = low applicability, blank = non-applicable



Whether lighting hallways, stairwells, prisons, or shopping plazas in a variety of high abuse applications, **Fail-Safe's** wall pack vandal resistant LED products offer a complete family of innovative, affordable, and energy saving LED solutions for your next project.