

Corelite luminaires are precision tooled for simple trouble free contractor installation. Standard aircraft cable connects directly to a 1/4-20 stud at all mounts. Suspension points are 4'-0", 8'-0" or 12'-0" on center. Standard drop lengths are 12", 15", 18", 21", 24" & 27". Optional cable adjuster (AC48, AC120, AC240) can be specified to accommodate infinite adjustment from 1" to 360".

JUNCTION BOX STRUCTURE INTERFACE (Connection at Ceiling)

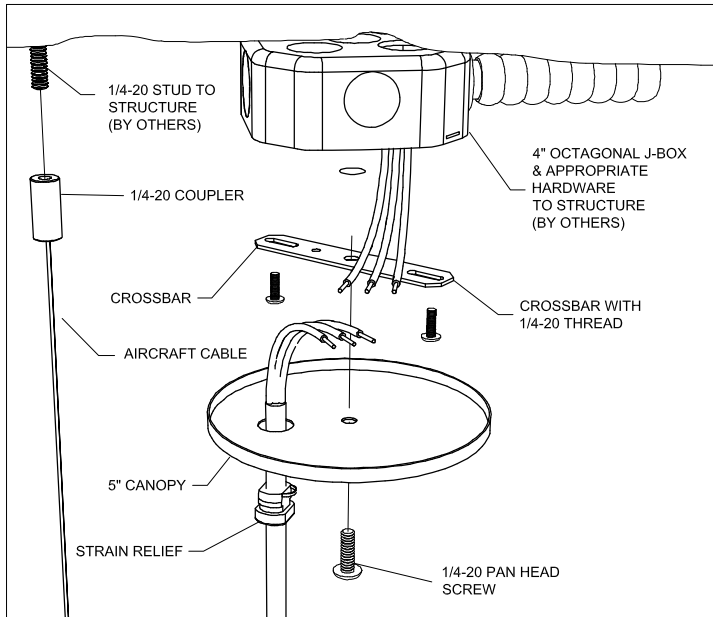
Aircraft Cable Mounting

AC-_-ST

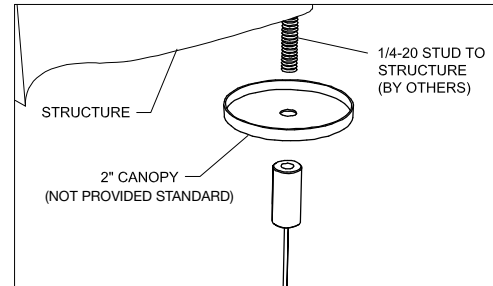
MOUNT DETAILS

*FOR ALL CORELITE SUSPENDED LUMINAIRES

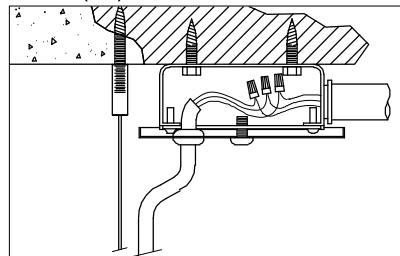
POWER



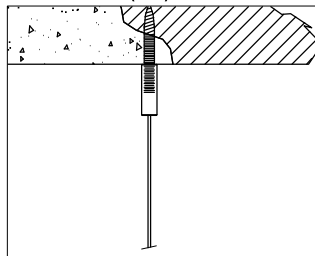
NON-POWER



POWER (2-D)



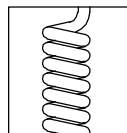
NON-POWER (2-D)



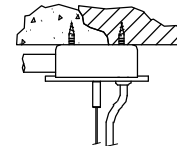
CONNECTION AT CEILING

1. Layout mounting locations.
2. Ensure that power feed is at the UL end of the fixture.
Power feed: to be installed to local/national electrical codes by a Certified Electrician.
3. Secure junction box and 1/4-20 stud to structure.
4. Secure cross bar to junction box.
5. Feed power cables through canopy and install strain relief.
6. Connect power cable in junction box, ensuring all connections are properly matched.
7. Place canopy over junction box & fasten with 1/4-20 pan head screw.
8. Install 1/4-20 coupler with aircraft cable to 1/4-20 stud.

OPTIONS



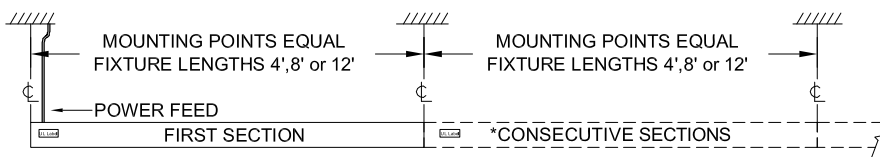
Curly Cord (AK):
SJT - 18/3 or SJT - 18/4
Curly Cord



Power Mount
Option with AC48

MOUNTS LOCATIONS

AIRCRAFT CABLES SIT IN .368" FROM THE END OF THE FIXTURE.



*For continuous rows see joining sheet.

Not all options available. Please consult your Cooper Lighting Solutions Representative for availability. Specifications and Dimensions subject to change without notice.