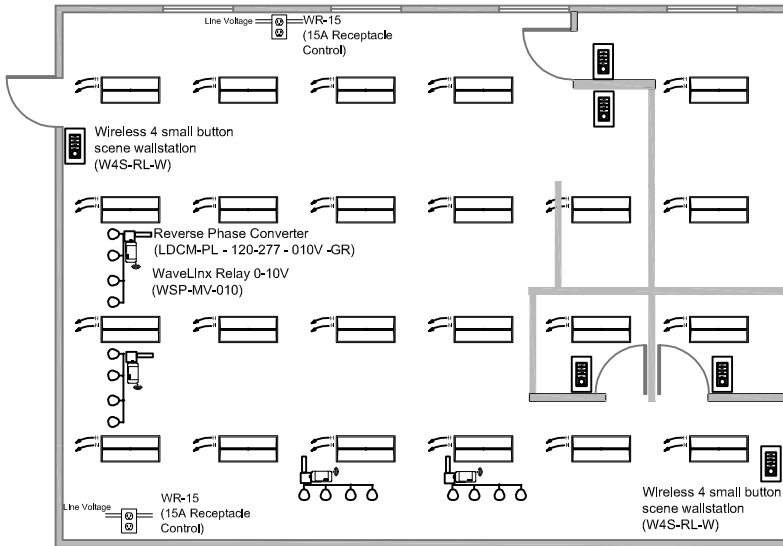




# WaveLinx Wireless Connected Lighting

ASHRAE 90.1 2016 DESIGN GUIDE  
RETAIL WITH 0-10V DIMMING AND DEMAND RESPONSE



## Bill of Materials

Qty	Catalog #	Description
1	WAC-POE	Wireless Area Controller
6	W4S-RL-W	1 Large button scene wallstation
4	WSP-MV-010	WaveLinx Relay 0-10V Switchpack
4	LDCM-PL - 120-277 - 010V -GR	Linear Dimming Control Modules
23	24EN-LD2-34-UNV-L835-CD1-SWPD1-U	Encounter 2x4 with INstinct Sensor

## SEQUENCE OF OPERATIONS:

### LIGHTING

- 0-10V LIGHTING LOADS
- UP TO 3 DIMMING ZONES
- OUT OF THE BOX 75% HIGH END TRIM

### OCCUPANCY

- AUTOMATIC ON TO 50%
- OPTIONAL VACANCY MODE
- OPTIONAL AUTO ON TO SCENE
- PLUG LOAD TURNS ON WITH OCCUPANCY
- AUTOMATIC OFF OF LIGHTING AND PLUG LOAD ON VACANCY

### DAYLIGHTING

- CONTINUOUS DIMMING TO OFF
- INDIVIDUAL LUMINAIRE DAYLIGHT DIMMING
- DAYLIGHTING NOT REQUIRED FOR INDOOR OFFICES
- NOT REQUIRED IN SPACES WITHOUT WINDOWS THAT ARE LESS THAN 120W.

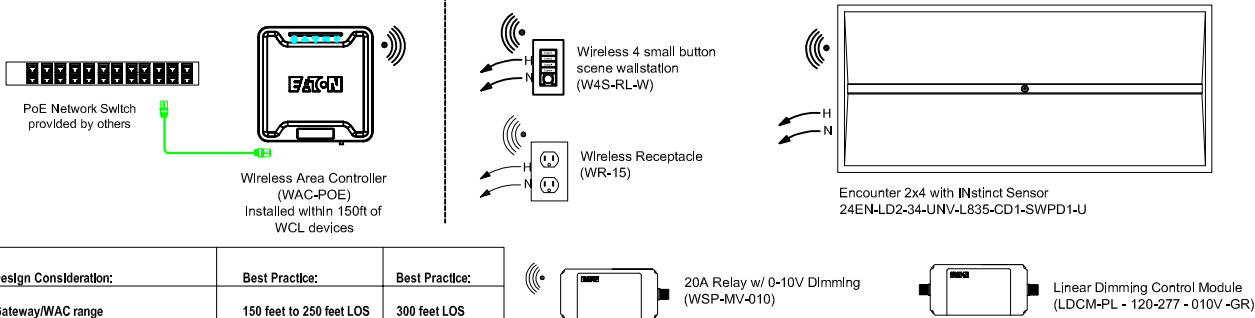
### MANUAL CONTROLS

- TOP OR DOMINANT BUTTON HALF LIGHTS (SETS LIGHTS TO 50% OR LESS)
- REMAINING BUTTONS TRIGGER SCENES
- RAISE
- LOWER
- ALL OFF

### ADDITIONAL FEATURES

- POWER MEASUREMENT REPORTING THROUGH MOBILE APPLICATION
- AUTOMATIC DEMAND RESPONSE AVAILABLE FROM WIRELESS AREA CONTROLLER
- SCHEDULING OF PARTIAL OFF LIGHT LEVELS AND TIMES FROM WIRELESS AREA CONTROLLER
- UL924 EMERGENCY CONTROL CAPABILITIES AVAILABLE VIA LUMINAIRE BATTERY BACKUP

## TYPICAL WIRING DETAIL



Design Consideration:	Best Practice:	Best Practice:
Gateway/WAC range	150 feet to 250 feet LOS	300 feet LOS
Number of interior walls	2 walls	3 walls
Distance from WAC to 1st WCL device	150 feet	200 feet
Distance between WCL devices	75 feet	150 feet
Number of hops from WAC	4 hops	5 hops
Number of areas per WAC	16	16
Number of zones per area	3	16
Number of scenes per area	6	10

	Local Control	Manual ON	Partial ON	Bilevel Lighting	Daylight Slide	Daylight Top	Partial OFF	Automatic OFF	Scheduled OFF	Receptacle Control	Energy Monitoring	Parking Garage	Functional Testing	Demand Response
ASHRAE 90.1-2016	9.4.1(a)	9.4.1.1(b)	9.4.1.1(c)	9.4.1.1(d)	9.4.1.1(e)	9.4.1.1(f)	9.4.1.1(g)	9.4.1.1(h)	9.4.1.1(i)	8.4.2	8.4.3.2	9.4.1.2	9.4.3	

