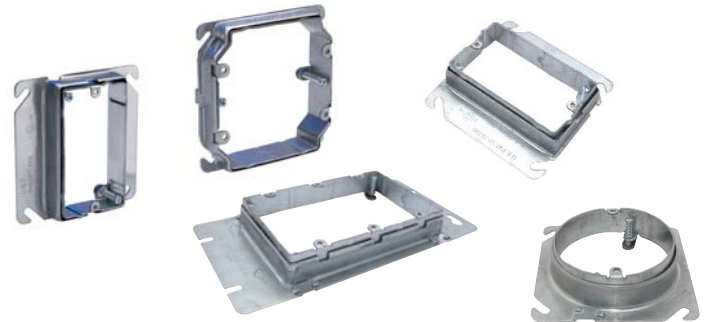


NEW!

Cooper Crouse-Hinds Adjustable Mud Rings

Cooper Crouse-Hinds is pleased to announce another innovative, labor saving, and exciting addition to Cooper Crouse-Hinds Commercial Products – **Adjustable Mud Rings**. These steel adjustable mud rings for 4” square steel and round boxes are now in stock and compliment our steel box and fast-growing PRE-formance™ offering.



Applications

Cooper Crouse-Hinds adjustable mud rings are patented and are designed to help give electrical contractors greater job site flexibility by ensuring proper installation of devices by accommodating various drywall thicknesses.

The 2011 National Electrical Code Article 314.20 states “in walls or ceilings with a surface of concrete, tile, gypsum, plaster, or other non-combustible material, boxes employing a flush-type cover or faceplate shall be installed so that the front edge of the box, plaster ring, extension ring, or listed extender will not be set back of the finished surface more than 6 mm (1/4”). In walls and ceilings constructed of wood or other combustible surface material, boxes, plaster rings, extension rings, or listed extenders shall be flush with the finished surface or project there from.” These adjustable mud rings provide a quick and easy way to ensure a satisfactory installation.

The rings can be adjusted prior to the installation of sheet rock, mud, or tile. They help assure the finished installation meets job specification requirements. When the rings are extended out it helps prevent the rings from being filled with drywall mud during the trim process and saves time and expense of rework before inspection.

The two gang adjustable mud ring is wider than traditional mud rings and allows for more room during installation of wiring devices. Adjustable mud rings are also available as pre-installed components in PRE-formance Custom Assemblies.

3rd Party Certifications

These rings have been ETL Listed to UL 514A and CAN/CSA-C22.2 No. 18.1 and are marked with the cETLus List Mark.



Product Information

Adjustable mud rings are available in single gang, two gang, three gang and round versions. Mud rings are made up of a two-piece telescoping design. Rings are adjusted by tightening or loosening two screws located on the inside of the inner ring until the ring is in the desired position. Rings can be mounted so that the device is vertical for traditional installations, or horizontal for under cabinet or Chicago area installations.

Cooper Crouse-Hinds Adjustable Mud Rings come in the following configurations:

- 1 Gang 5/8" raised, adjustable to 1-1/4" for a single device
- 1 Gang 3/4" raised, adjustable to 1-1/2" for a single device
- 2 Gang 5/8" raised, adjustable to 1-1/2" for two devices
- 3 Gang 3/4" raised, adjustable to 1-1/2" for three devices
- Round 3/4" raised, adjustable to 1-1/2" for a single device



Cat. #	Description	NAED No.	Product Group	Unit QTY	Wt per 100	Capacity Cu. In.
AMR1	1G ADJUSTABLE MUD RING	66227701195	070	25	47	5.5
AMR2	2G ADJUSTABLE MUD RING	66227701196	070	25	50	11.3
AMR158	1G ADJUSTABLE MUD RING	66227705986	070	25	44	6.0
AMR3	3G ADJUSTABLE MUD RING	66227705985	070	25	78	10.4
AMR0	ROUND ADJUSTABLE MUD RING	66227705987	070	25	44	6.1

Cooper Crouse-Hinds

P.O. Box 4999
 Syracuse, NY 13221
 Toll Free: (866) 764-5454
 Fax: (315) 477-5179 FAX Orders Only: (866) 653-0640
crouse.customerctr@cooperindustries.com