

# Steel octagon boxes & ceiling pans

## 3 1/4" ROUND CEILING PANS – 4.0 CUBIC INCH CAPACITY

1/2" DEEP  
CLAMPS IN BOTTOM  
UL LISTED



TP266

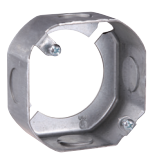
Cat. #	Knockouts		Fan rated (weight lbs.)	Fixture rated (weight lbs.)	Unit qty.	Wt. lbs. per 100
	Cable	Conduit				
TP266	4 - cable	1 - 1/2"	No	50	50	30

## 3 1/2" OCTAGON OUTLET BOXES

1 1/2" DEEP  
UL LISTED



TP256



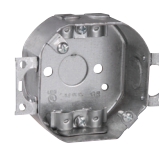
TP258



TP259



TP260



TP264

Cat. #	Description	Cubic inches	Knockouts		Fan rated (weight lbs.)	Fixture rated (weight lbs.)	Unit qty.	Wt. lbs. per 100
			Sides	Bottom				
For conduit – no clamps								
TP256	-	11.5	4 - 1/2"	1 - 1/2"	No	50	50	41
TP258	Extension ring	9.0	4 - 1/2"	-	No	50	50	31
For non-metallic cable with clamps								
TP259	"S" bracket, set 1/2"	9.0	4 - cable, 1 - 1/2"	1 - 1/2"	No	50	50	53
TP260	-	11.5	4 - cable, 2 - 1/2"	1 - 1/2"	No	50	50	44
TP264	Two screw ears	9.0	4 - cable, 2 - 1/2"	1 - 1/2"	No	50	50	47

## 3 1/2" ROUND CEILING COVERS

UL LISTED



TP270



TP272

Cat. #	Knockouts		Unit qty.	Wt. lbs. per 100
	Cable	Conduit		
TP270	Flat blank		100	18
TP272	Flat, 1/2" KO in center		100	18

Steel boxes

# Steel octagon boxes & ceiling pans

## 4" ROUND CEILING PANS

UL LISTED



TP261



TP267



TP269



TP301

Cat. #	Description	Depth	Cubic inches	Knockouts		Fan rated (weight lbs.)	Fixture rated (weight lbs.)	Unit qty.	Wt. lbs. per 100
				Sides	Bottom				
TP261	External clamp and mounting screws (polybagged)	5/8"	8.0	-	2 - 1/2"	35	50	20	50
TP267	KOs and clamps	1/2"	6.0	-	4 - cable, 3 - 1/2"	No	50	50	39
TP269	KOs only	1/2"	6.0	-	5 - 1/2"	No	50	50	35
TP269G <sup>F</sup>	KOs Only	1/2"	6.0	-	5 - 1/2"	No	50	50	35
TP301 <sup>G</sup>	NM snap-in connector, mtg. screws, protective cover	1/2"	6.0	-	3 - 1/2"	70	90	20	51

<sup>F</sup>CSA certified. G indicates ground screw installed.  
<sup>G</sup>TP301 fan is supported independent of outlet box.

## 4" OCTAGON OUTLET BOXES – 15.5 CUBIC INCH CAPACITY

1 1/2" DEEP  
 FOR CONDUIT – NO CLAMPS

UL LISTED



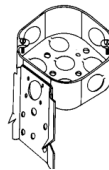
TP274, TP278,  
 TP834G



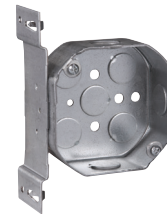
TP276



TP273



TP280



TP282



TP284, TP286

Cat. #	Description	Knockouts		Fan rated (weight lbs.)	Fixture rated (weight lbs.)	Unit qty.	Wt. lbs. per 100
		Sides	Bottom				
TP274	-	4 - 1/2"	5 - 1/2"	No	50	50	50
TP274G <sup>F</sup>	-	4 - 1/2"	5 - 1/2"	No	50	50	50
TP274RED <sup>G</sup>	-	4 - 1/2"	5 - 1/2"	No	50	50	50
TP273	Blank bottom	4 - 1/2"	-	No	50	50	51
TP276	-	4 - 3/4"	3 - 1/2", 2 - 3/4"	No	50	50	50
TP276G <sup>F</sup>	-	4 - 3/4"	3 - 1/2", 2 - 3/4"	No	50	50	50
TP278	-	2 - 1/2", 2 - 3/4"	3 - 1/2", 2 - 3/4"	No	50	50	50
TP278G <sup>F</sup>	-	2 - 1/2", 2 - 3/4"	3 - 1/2", 2 - 3/4"	No	50	50	50
TP280	"C" bracket	4 - 1/2"	5 - 1/2"	No	50	50	60
TP280G <sup>F</sup>	"C" bracket	4 - 1/2"	5 - 1/2"	No	50	50	60
TP282	"S" bracket, set 1/2"	3 - 1/2"	5 - 1/2"	No	50	50	58
TP282G <sup>F</sup>	"S" bracket, set 1/2"	3 - 1/2"	5 - 1/2"	No	50	50	58
<b>Air plenum</b>							
TP834 <sup>B</sup>	For air plenum	4 - 1/2"	5 - 1/2"	No	50	50	52
<b>Octagon extension rings – (slot &amp; key permit mounting without removing box screws)</b>							
TP284 <sup>F</sup>	-	4 - 1/2"	-	No	50	50	36
TP286 <sup>F</sup>	-	2 - 1/2", 2 - 3/4"	-	No	50	50	36

<sup>B</sup>For air plenum (no mounting holes) - not UL Listed.  
<sup>F</sup>CSA certified. G indicates ground screw installed.  
<sup>G</sup>Not UL Listed.

Steel boxes