

Steel square covers

4" SQUARE EXTENSION RINGS

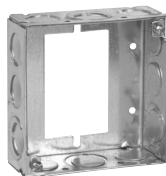
1 1/2" DEEP WITH CONDUIT KNOCKOUTS – 21.0 CUBIC INCH CAPACITY

2 1/8" DEEP WITH CONDUIT KNOCKOUTS – 30.3 CUBIC INCH CAPACITY

UL LISTED



TP424



TP422



TP426



TP428RED



TP443



TP428, TP833

Cat. #	Knockouts		Unit qty.	Wt. lbs. per 100
	Sides	Bottom		
1 1/2" deep				
TP424	12 - 1/2"	-	50	46
TP426	8 - 3/4"	-	50	46
TP428	8 - 1/2", 4 - 3/4"	-	50	46
TP428RED	8 - 1/2", 4 - 3/4"	-	50	46
TP833	8 - 1/2", 4 - 3/4"	-	50	48
2 1/8" deep				
TP443	8 - 1/2", 4 - 3/4"	-	25	66
TP465	8 - 1"	-	25	60
1 1/2" deep switch & masonry box extension ring				
TP422	8 - 1/2", 4 - 1/2" + 3/4" E	-	50	50

ⓑ For air plenum (no mounting holes). Requires the use of TP854; purchase separately - not UL Listed.

ⓓ For use as extension with switch box, not four square box.

Ⓜ CSA certified.

Steel boxes

FLEXIBLE FIXTURE HANGERS

TPSFH square flexible fixture hangers are used in commercial or light industrial applications where HID high bay and low bay lighting fixtures are used. Specific applications include storage facilities, shipping warehouses, retail and DIY facilities.

Features:

- Suitable for use with 1/2" or 3/4" fixture conduit stems, these hangers allow the conduit stem of the fixture (luminaire) to swing in any direction; maximum swing angle is 26° from vertical max. slope angles 22 1/2°
- Available for attachment to 4" square steel boxes
- Quickly and easily attached by two screws
- Hangers are drilled and tapped for use with 3/4" conduit stem as standard and come supplied with a 3/4" - 1/2" reducer for 1/2" conduit stem applications

Certifications and compliances:

- UL1598
- CSA C22.2 No. 250
- Suitable for damp locations

Standard materials and finishes:

- Material – sheet steel
- Finish – zinc chromate for corrosion resistance



Cat. #	Description	Support Wt. (lbs.)
TPSFH12	For use with 4" Square Boxes	50