

REV.	DESCRIPTION	LTR.	CHK.	APV
A	Updated Manual to agree with latest manufacturing	A95-238	5/16/95	
B	Changed doc. 9424, Fig 5-7, pg. 5-9 - VA for 60915-8 was 130.	A97-182	4/3/97	J.A.S.
C	Added Warning Note to Para. 5.1 on lamp disposal	A201-116	4/27/01	GFR
D	Updated Figures 3-2, 4-1, 6-1 thru 6-4, 6-6, & 6-7 to show updated ballast box. Updated Parts List to agree with latest manufacturing.	A202-122	6/28/02	GFR
E	Updated Parts Lists to add Items 53 & 54 to PL60915 and Items 120 & 121 to PL62055	A202-285	12/17/02	GFR
F	Updated Figures 4-2, 4-3, 6-2 thru 6-5 to show latest mfg.; Deleted Item 101 on PL60915 and Item 115 on PL62055 was 10047-644 & added qty to Item 17; Deleted Item 96 on PL62055 was 62072 Qty 2,4,4,4,6	A203-009	1/28/03	GFR
G	Changed Item callout on Figure 6-6; Qty of Item 99, sht 6-24 was 2; Qty of Item 96, sht 6-17 was 2; Added Item 98 to sht 6-17; Added Item 96 to sht 6-24	A203-041	2/21/03	GFR
H	Added IL info to Figures 5-5 and 5-7	A203-149	6/12/03	GFR
J	Updated Figures 5-6, 6-5, & Parts Listing as follow: Fig. 5-6 P/N 10K01-016D and 10A10-016D24 was 10L01-019D and 10B10-019D20; Fig. 6-5, Item 44 deleted and added Item 60; Parts Listing for Single Face Sign Assembly (sheets 6-14, 6-15), Item 44 deleted from all versions and Item 55 was 10L01-019D qty 3,3,5,5,5; Item 56 was 10B10-019D20 and added Item 60, 11A12-016D qty 2,2,4,4,4; Parts Listing for Double Face Sign Assembly (sheets 6-21, 6-22) Item 44 deleted from all versions and Item 55 was 10L01-019D qty 3,3,5,5,7; Item 56 was 10B10-019D20 and added Item 60, 11A12-016D qty 2,4,4,4,6	A209-064	8/24/09	JRC
K	Item 11 & 12 and Figures 4-1, 4-2 & 4-3, PN 10037-0898 was 10037-660, PN 10037-0899 was 61054	A211-018	6/17/11	SD

LIMITED PRODUCT WARRANTY

THE FOLLOWING WARRANTY IS EXCLUSIVE AND IN LIEU OF ALL OTHER WARRANTIES, WHETHER EXPRESS, IMPLIED OR STATUTORY, INCLUDING, BUT NOT BY WAY OF LIMITATION, ANY WARRANTY OF MERCHANTABILITY OR FITNESS FOR ANY PARTICULAR PURPOSE.

Crouse-Hinds Airport Lighting Products (the “Company”) warrants to each original Buyer of Products manufactured by the Company that such Products are, at the time of delivery to the Buyer, free of material and workmanship defects, provided that no warranty is made with respect to:

- (a) any Product which has been repaired or altered in such a way, in Company's judgment, as to affect the Product adversely;
- (b) any Product which has, in Company's judgment, been subject to negligence, accident or improper storage;
- (c) any Product which has not been operated and maintained in accordance with normal practice and in conformity with recommendations and published specification of Company; and,
- (d) any Products, component parts or accessories manufactured by others but supplied by Company (any claims should be submitted directly to the manufacturer thereof).

Crouse-Hinds Airport Lighting Products’ obligation under this warranty is limited to use reasonable efforts to repair or, at its option, replace, during normal business hours at any authorized service facility of Company, any Products which in its judgment proved not to be as warranted within the applicable warranty period. All costs of transportation of Products claimed not to be as warranted and of repaired or replacement Products to or from such service facility shall be borne by Purchaser. Company may require the return of any Product claimed not to be as warranted to one of its facilities as designed by Company, transportation prepaid by Purchaser, to establish a claim under this warranty. The cost of labor for installing a repaired or replacement product shall be borne by Purchaser. Replacement parts provided warranty period of the Products upon which they are installed to the same extent as if such parts were original components thereof. Warranty services provided under the Agreement do not assure uninterrupted operations of Products; Company does not assume any liability for damages caused by any delays involving warranty service. The warranty period for the Products is 24 months from date of shipment or 12 months from date of first use whichever occurs first.

SAFETY NOTICES

This equipment is normally used or connected to circuits that may employ voltages which are dangerous and may be fatal if accidentally contacted by operating or maintenance personnel. Extreme caution should be exercised when working with this equipment. While practical safety precautions have been incorporated in this equipment, the following rules must be strictly observed:

KEEP AWAY FROM LIVE CIRCUITS

Operating and maintenance personnel must at all times observe all safety regulations. **DO NOT PERFORM MAINTENANCE ON INTERNAL COMPONENTS OR RE-LAMP WITH POWER ON.**

RESUSCITATION

Maintenance personnel should familiarize themselves with the technique for resuscitation found in widely published manuals of first aid instructions.

Table of Contents

Title Page.....	i
Revision Page.....	ii
Limited Product Warranty.....	iii
Safety Notices.....	iv
Table of Contents.....	v
1.0 General Information.....	1-1
2.0 Specifications.....	2-1
3.0 Installation.....	3-1
4.0 Maintenance - Mechanical.....	4-1
5.0 Maintenance - Electrical.....	5-1
6.0 Parts Lists.....	6-1
7.0 Spare Parts List.....	7-1
<u>Figures</u>	
Figure 3-1A Footprint information.....	3-2
Figure 3-1B Dimension "Z" between adjacent Sign legs.....	3-3
Figure 3-1C Footprint information.....	3-4
Figure 3-2 Mounting height and tilt adjustment.....	3-5
Figure 3-3 Electrical connection 6.6 amp constant current.....	3-6
Figure 3-4 Lamp Bypass Circuit.....	3-7
Figure 3-5 Mounting detail, Elbow Assembly.....	3-8
Figure 4-1 Hinged Sign Face Assy.....	4-2
Figure 4-2 Hinged Sign Face Assy, Double Face Sign.....	4-3
Figure 4-3 Hinged Sign Face Assy, 6 foot Double Face Sign.....	4-4
Figure 4-4 Mounting leg details.....	4-5
Figure 4-5 Removable Hinge Pin Assy.....	4-8
Figure 5-1 Wiring Diagram - 1 Lamp, 45 Turn Ballast.....	5-3
Figure 5-2 Wiring Diagram - 2 Lamps, 45 Turn Ballast.....	5-4
Figure 5-3 Wiring Diagram - 1 Lamp, 55 Turn Ballast.....	5-5
Figure 5-4 Wiring Diagram - 2 Lamps, 55 Turn Ballast.....	5-6
Figure 5-5 Wiring Diagram - 3 Lamps, 55 Turn Ballast(s).....	5-7
Figure 5-6 Typical lamp socket mounting.....	5-8
Figure 5-7 Electrical Information.....	5-9
Figure 6-1 Typical Single Face Sign Assembly.....	6-3
Figure 6-2 Typical Double Face Sign Assembly.....	6-4
Figure 6-3 6 foot Double Face Sign Assembly.....	6-5
Figure 6-4 12 foot Double Face Sign Assembly.....	6-6
Figure 6-5 Typical Lamp Mounting.....	6-7
Figure 6-6 Typical 2 Lamp Ballast Box.....	6-8
Figure 6-7 Typical Ballast Box Mounting.....	6-9
Figure 6-8 Typical Sign Face Assembly.....	6-10

1.0 GENERAL INFORMATION

1.1 General Description

Crouse-Hinds Airport Lighting Products Internally Illuminated Taxiway and Runway Signs provide outstanding message visibility, day or night. Retroreflective material behind sturdy polycarbonate surface provides effective recognition when high intensity light impinges upon the sign face. Red/White, Yellow/Black, and Black/Yellow color combinations may be ordered with any desired message. Weather resistant, non-metallic housing does not present a target to ground radar sweep. Signs are available as single or double faced.

For further information on Taxiway Signs and their use, consult FAA Advisory Circulars AC 150/5340-18 and AC 150/5345-44 and the Crouse-Hinds Design Handbook of Aviation Lighting.

1.2 Classification of Signs

The signs covered in this manual are designed and manufactured in accordance with the requirements of FAA Advisory Circular AC 150/5345-44.

TYPES

- Type L-858Y - Direction destination and boundary sign - black legend on a yellow background
- Type L-858R - Mandatory instruction sign - white legend on a red background
- Type L-858L - Taxiway and runway location sign - yellow legend and border on a black background

A sign may consist of multiple arrays of the above messages.

SIZES

- Size 3 - 18 inch legend

STYLES

Style 2 - Powered from a series lighting circuit (4.8 to 6.6 Amps)

Style 3 - Powered from a series lighting circuit (2.8 to 6.6 Amps)

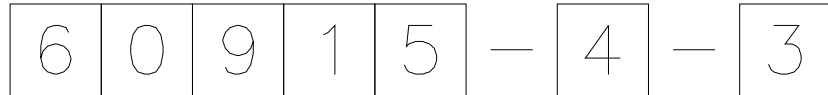
Style 5 - Powered from a series lighting circuit (5.5 Amps)

CLASS

Class 1 - For operation down to -20°C

NOTE: If signs are installed on a dedicated sign only circuit, the calculated VA (volt ampere) load for the circuit should be between 60% to 90% of the rating of the constant current regulator. If this recommendation is not followed, contact Crouse-Hinds Airport Lighting Products Engineering Department for instructions.

1.3 Manufacturing Part Numbers



PART NUMBER:
60915 (SINGLE FACE)
62055 (DOUBLE FACE)

SIGN LENGTH:
4 = 4 FEET
6 = 6 FEET
8 = 8 FEET
10 = 10 FEET
12 = 12 FEET
D = 4 FOOT SIZE 5 DMS

ELECTRICAL PACKAGE:
3 = 4.8 TO 6.6 AMPS
5 = 2.8 TO 6.6 AMPS
9 = 5.5 AMPS

2.0 SPECIFICATIONS

Temperature:	Class 1 - -20°C to +55°C
Weather:	All normal outdoor conditions
Wind:	200 MPH continuous
Radio and Navigation Interference:	None
Background Color Discernibility:	Excellent at 800 Feet
Illumination:	Internal

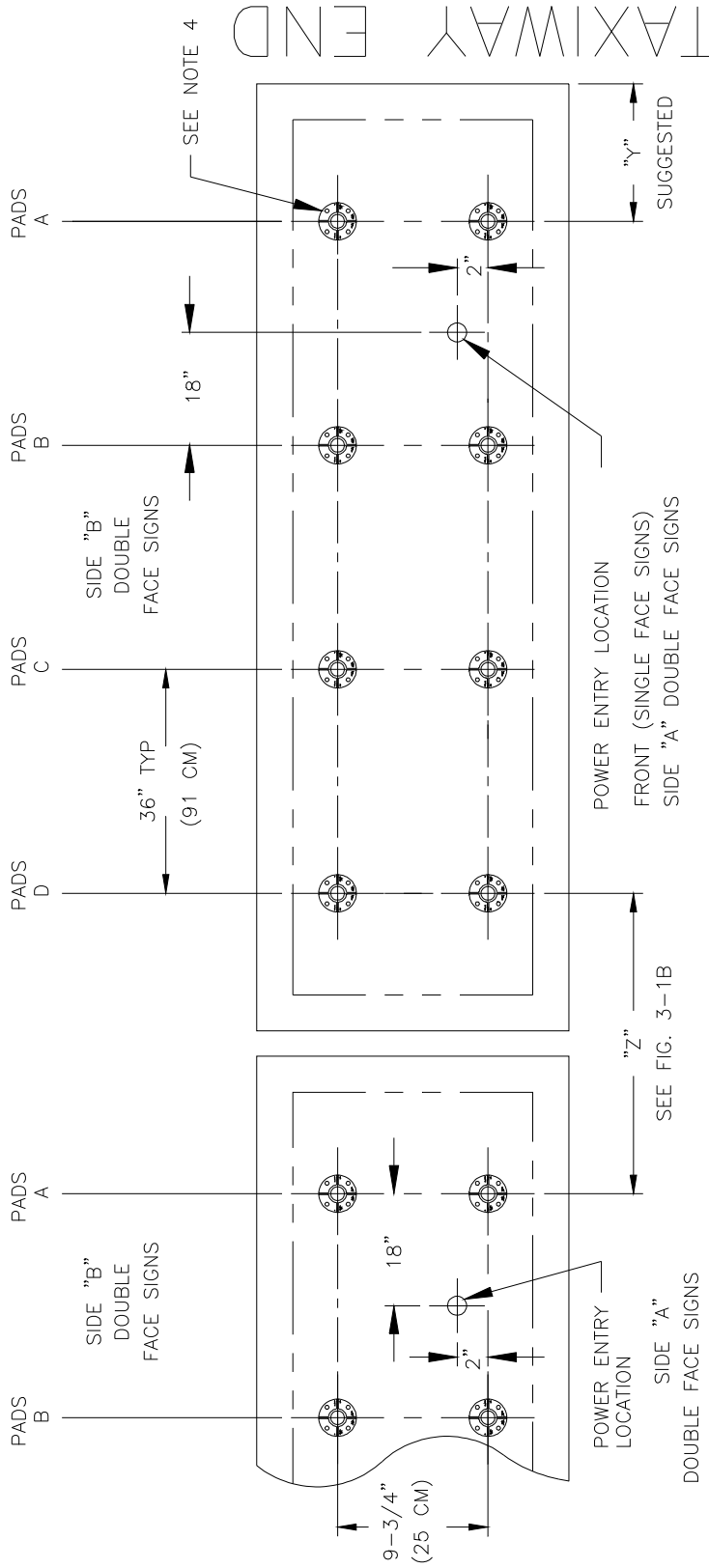
3.0 INSTALLATION

- 3.1 Refer to Figure 3-1A for mounting pad layout.
- 3.2 Remove sign from shipping container.
- 3.3 All Double Face Signs installed end to end are to be approximately 2 inches apart. See Figure 3-1B for details.
- 3.4 Place the mounting flanges over the threaded studs in the mounting pad and securely fasten. Attach tethers to 1/2 inch anchor bolts
- 3.5 Level single face housings and adjust such that the sign face is tilted down approximately $1^\circ \pm 1/2^\circ$ as shown in Figure 3-2. Level double face signs to equalize each built in face tilt as shown in Figure 3-2. Adjust the height of the sign so that the height is between 36" and 42".

CAUTION:

Be sure all legs are seated evenly on the mounting surface before tightening floor flange hardware. the sign body must not be bent or deformed due to an uneven installation procedure.

- 3.6 Carefully remove the burlap covering from the sign. Burlap covering may be reused to cover the Sign Face if so desired after installation. This would be to prevent the legend from being seen until its time to.
- 3.7 Make electrical connections as shown in Figure 3-3 for 6.6 Amp Constant Current operation. Adjust jumper on the lamp bypass circuit, P/N 61065-3 or 61065-4, for use with either a series or shunt regulator. Lamp Bypass Circuit is located inside the External Ballast Box. See Figure 3-4 for details.
- 3.8 Run an external ground wire to the ground clamp provided on the External Ballast Box. Ground wire shall be of sufficient size and rating per applicable Electrical Codes. External ground wire shall be secured to a grounding electrode per applicable Electrical Codes.



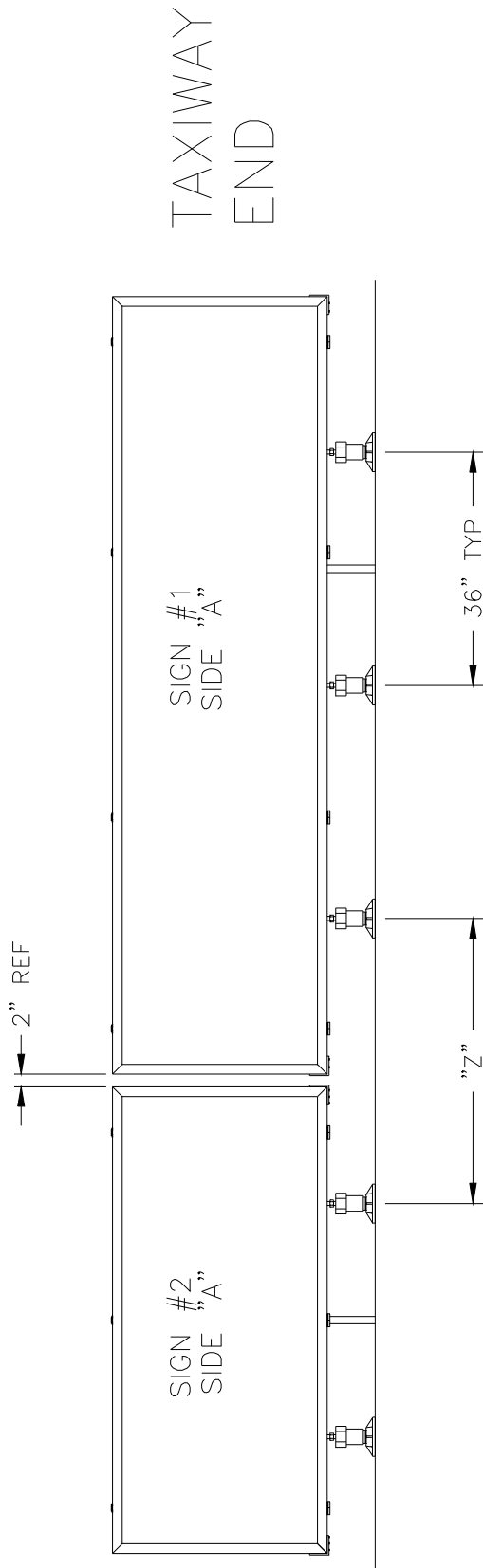
TAXIWAY END

NOTES:

1. FOUNDATION MUST EXTEND BELOW FROST LINE.
2. CONCRETE PADS MUST BE LEVEL. TURN FLOOR FLANGE 1/4 TURN TO BE SURE ALL FLANGES ARE IN CONTACT WITH PAD BEFORE TIGHTENING ANCHOR NUTS. USE 1/2 DIA ANCHOR BOLTS
3. LOCATE FLOOR FLANGES AS SHOWN. SEE TABLE. IF TWO SIGNS ARE TO BE LOCATED NEXT TO EACH OTHER, SEE "Z" DIMENSION TABLE.
4. 25684-1.6" DIA FLOOR FLANGE (4) .63 DIA MTG HOLES EQUALLY SPACED ON A 4.75 DIA B.C. POSITION AS SHOWN
5. POWER ENTRY LOCATION TO BE TAPPED FOR 2-11 1/2 THREADS
6. CONCRETE FOR SIGN BASES SHOULD BE 4000 PSI. EMBEDDING DEPTH OF ANCHOR BOLTS SHOULD BE 4 INCHES MINIMUM

SIZE OF SIGN	MOUNTING PAD PAIR CONFIGURATION	TOTAL NUMBER OF FEET	"Y" SUGGESTED
4' SNGL	A & B	4	10"
6' SNGL	A & B	4	22"
8' SNGL	A & B & C	6	16"
10' SNGL	A & B & C	6	28"
12' SNGL	A & B & C & D	8	22"
4' DBL	A & B	4	10"
6' DBL	A & B	4	22"
8' DBL	A & B & C	6	16"
10' DBL	A & B & C	6	28"
12' DBL	A & B & C & D	8	22"

FOOT PRINT INFORMATION SEE FIG. 3-1B
FIGURE 3-1A

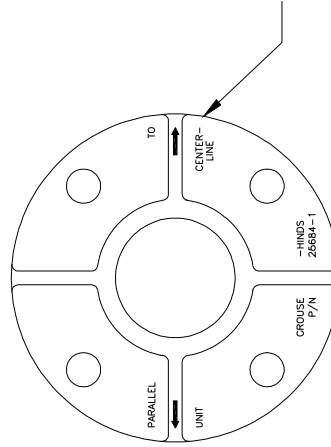


NOTES:

1. ON DOUBLE FACED SIGNS, DETERMINE SIDE "A" OR SIDE "B" FOR MESSAGES SO THAT THE POWER ENTRY IS LOCATED PROPERLY.

CONCRETE PADS MUST BE LEVEL. TURN FLOOR FLANGE 1/4 TURN TO BE SURE ALL FLANGES ARE IN CONTACT WITH PAD BEFORE TIGHTENING ANCHOR NUTS. USE 1/2 DIA ANCHOR BOLTS.

25684-1 6" DIA FLOOR FLANGE (4) .63 DIA MTG HOLES EQUALLY SPACED ON A 4.75 DIA B.C. FLANGE MUST BE MOUNTED WITH RIBS IN POSITION AS SHOWN



"Z" DIMENSION FOR ALL SIGN LENGTH COMBINATIONS

LENGTH SIGN #1	LENGTH SIGN #2				
	4'	6'	8'	10'	12'
4'	14"	26"	18"	32"	26"
6'	26"	38"	32"	44"	38"
8'	20"	32"	26"	38"	32"
10'	32"	44"	38"	50"	44"
12'	25"	38"	32"	44"	38"

DIMENSION "Z" BETWEEN ADJACENT SIGN LEGS

FIGURE 3-1B

CAUTION:
BE SURE ALL LEGS ARE SEATED EVENLY ON THE MOUNTING SURFACE BEFORE TIGHTENING FLOOR FLANGE HARDWARE. THE SIGN BODY MUST NOT BE BENT OR DEFORMED DUE TO AN UNEVEN INSTALLATION PROCEDURE.

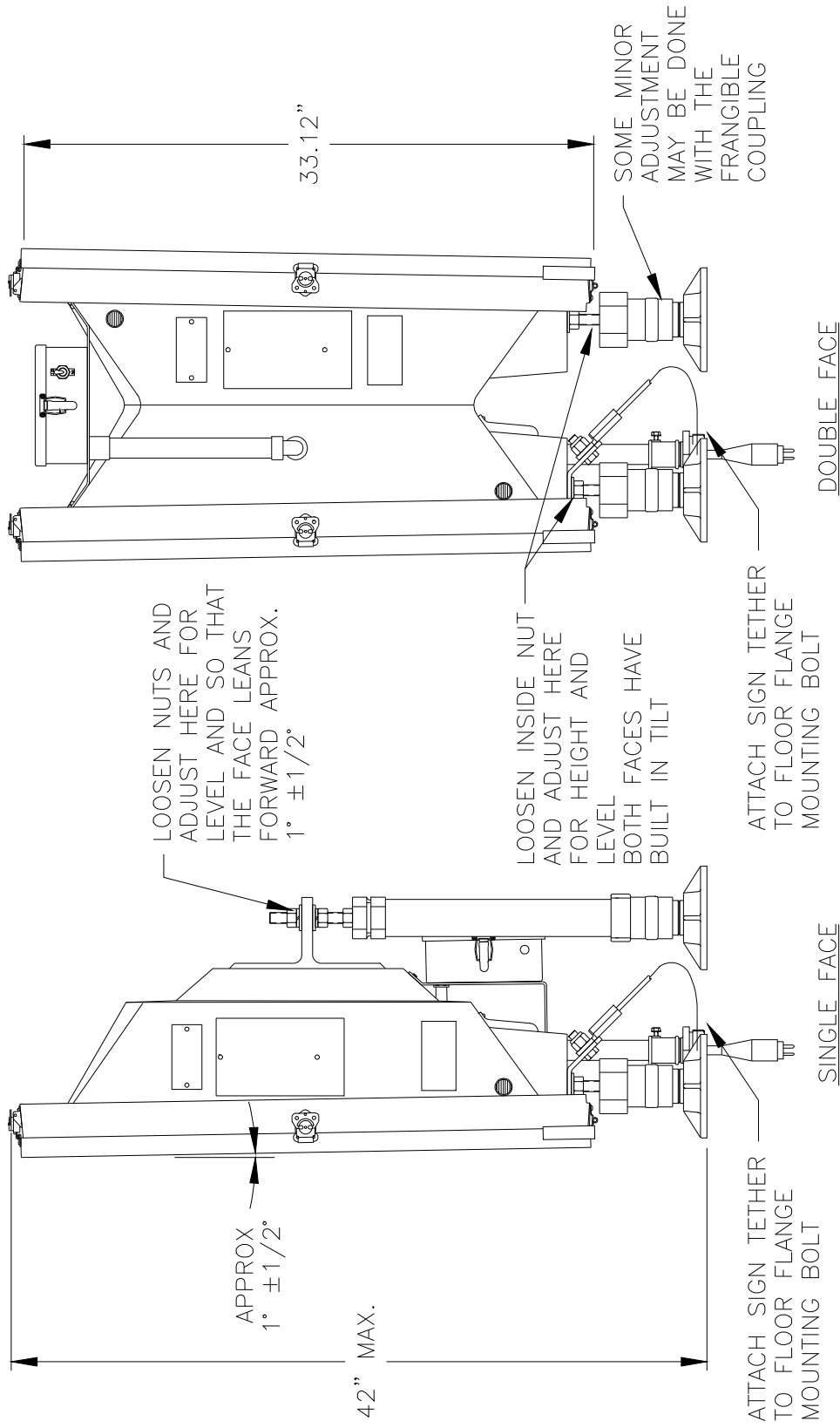
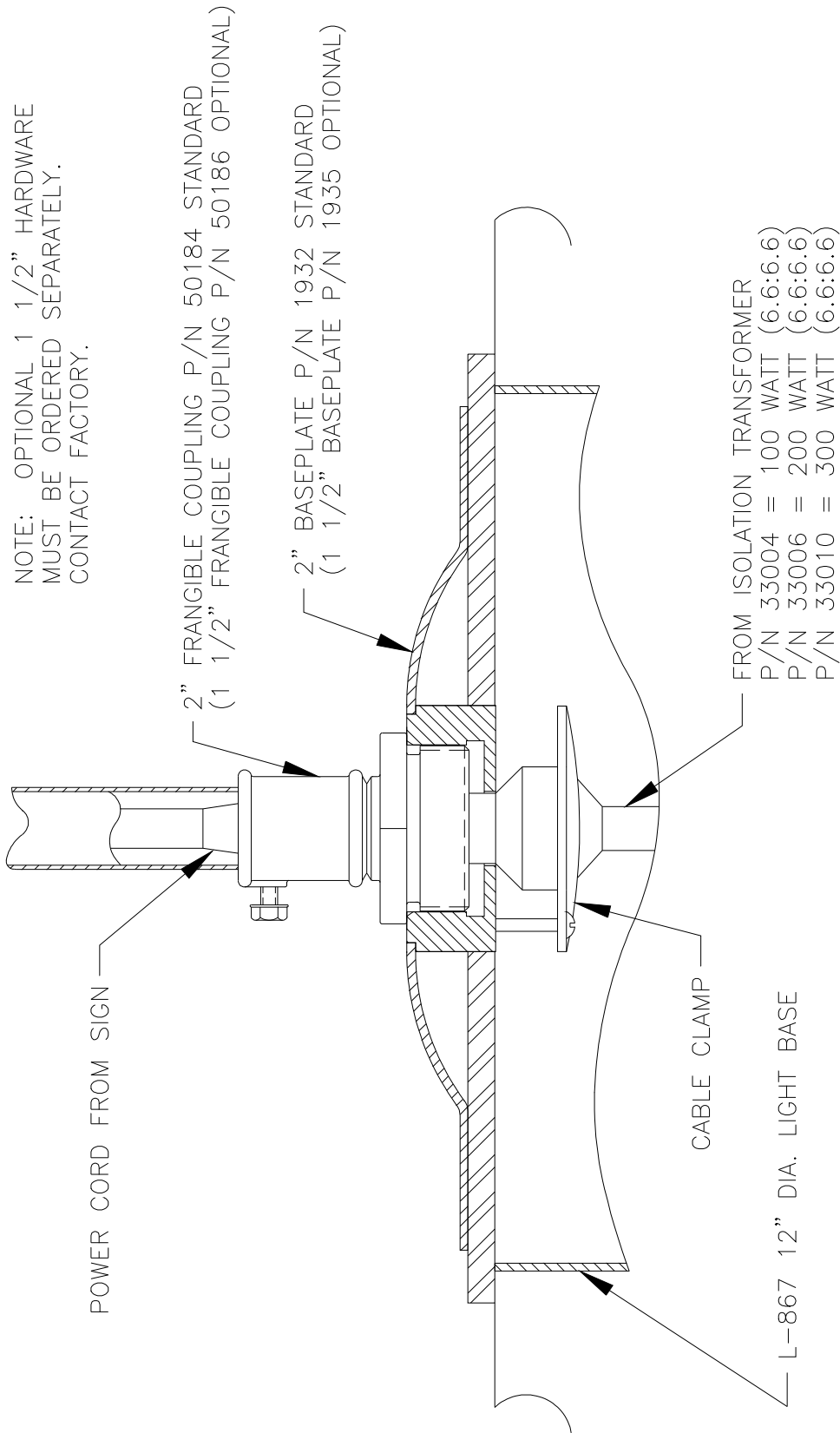


FIGURE 3-2

MOUNTING HEIGHT AND TILT ADJUSTMENT



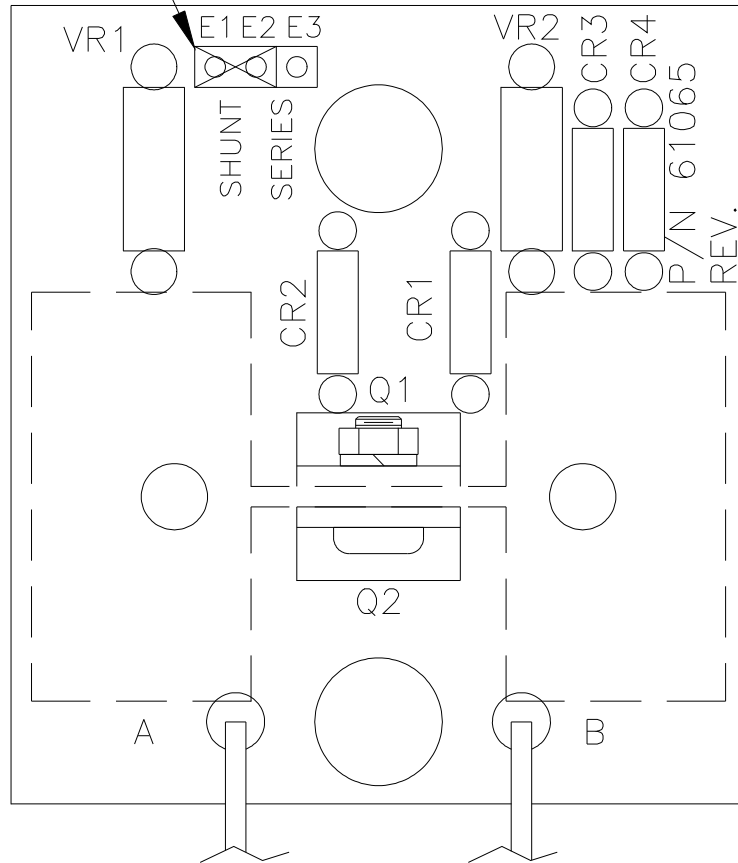
NOTE: LIGHT BASE, BASEPLATE TRANSFORMER AND CONNECTOR KITS MUST BE ORDERED SEPARATELY.

SEE FIGURE 3-5 FOR ALTERNATE POWER FEED INSTALLATION

ELECTRICAL CONNECTION
6.6 AMP CONSTANT CURRENT

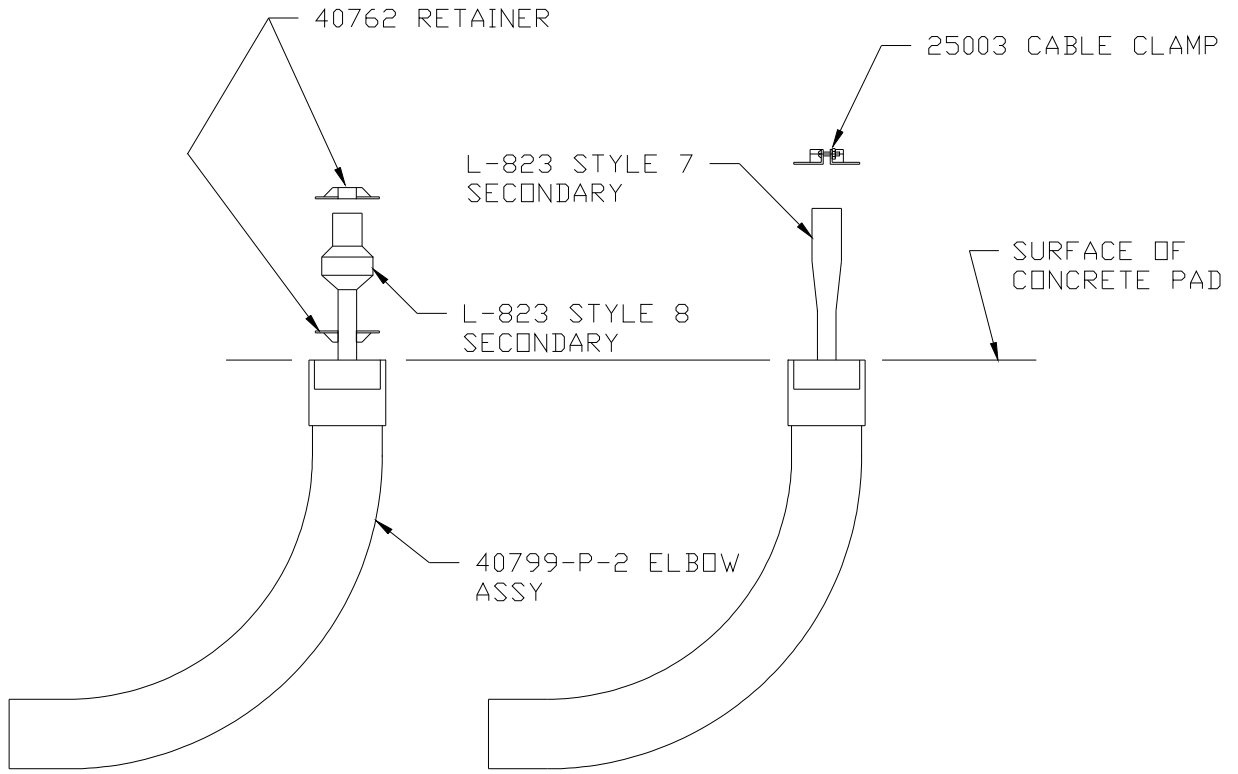
FIGURE 3-3

JUMPER E1-E2 = SHUNT TYPE REGULATOR
JUMPER E2-E3 = SERIES TYPE REGULATOR



NOTE:

ALL SIGNS ARE SHIPPED WITH THE JUMPER IN THE SHUNT POSITION. IF THE SIGN FAILS TO START, CHECK ON-OFF SWITCH AND LAMPS BEFORE MOVING JUMPER.



METHOD "A"

METHOD "B"

4.0 MAINTENANCE - MECHANICAL

Crouse-Hinds Lighting Taxiway Guidance Signs are designed to provide years of trouble-free service. However, if any difficulties do occur, this maintenance section will aid in trouble shooting and repair. Any questions regarding equipment problems should be referred to the Crouse-Hinds Airport Lighting Customer Service Department.

4.1 Preventive Maintenance

4.1.1 Cleaning

The entire sign housing and face(s) may be cleaned using mild soap and water. Use of harsh detergents or chemical cleaning agents may damage the sign surfaces.

DO NOT STEAM CLEAN.

WARNING: REMOVE POWER BEFORE CLEANING, REMOVING THE COVER(S), OR MAKING ANY REPAIRS. THE BALLAST BOX SWITCH SHOULD ALWAYS BE OFF WHEN WORKING ON THE SIGN.

4.1.2 Inspection

The entire sign assembly should be inspected at six month intervals for loose, broken or missing parts, defective seals or worn electrical cables.

4.2 Mechanical Problems

Problems of a mechanical nature are generally limited to the areas of the frangible couplings. The signs are designed to shear off at the frangible couplings if impacted or hit by excessive jet blast.

If the sign housing has been sheared off, unplug from power and determine the extent of damage to the housing. If cracked, the entire sign should be replaced. When it is determined that damage is confined to the leg mounting hardware, all hardware must be examined for straightness and replaced if bent. If brackets are bent, refer to paragraph 4.2.1 to remove sign face assembly and also to re-assemble. Refer to Parts Common List for hardware needed for the particular size sign. Refer to Figures 4-1 thru 4-5 for hardware replacement and assembly. Follow paragraph 3.0 and subparagraphs for re-installation.

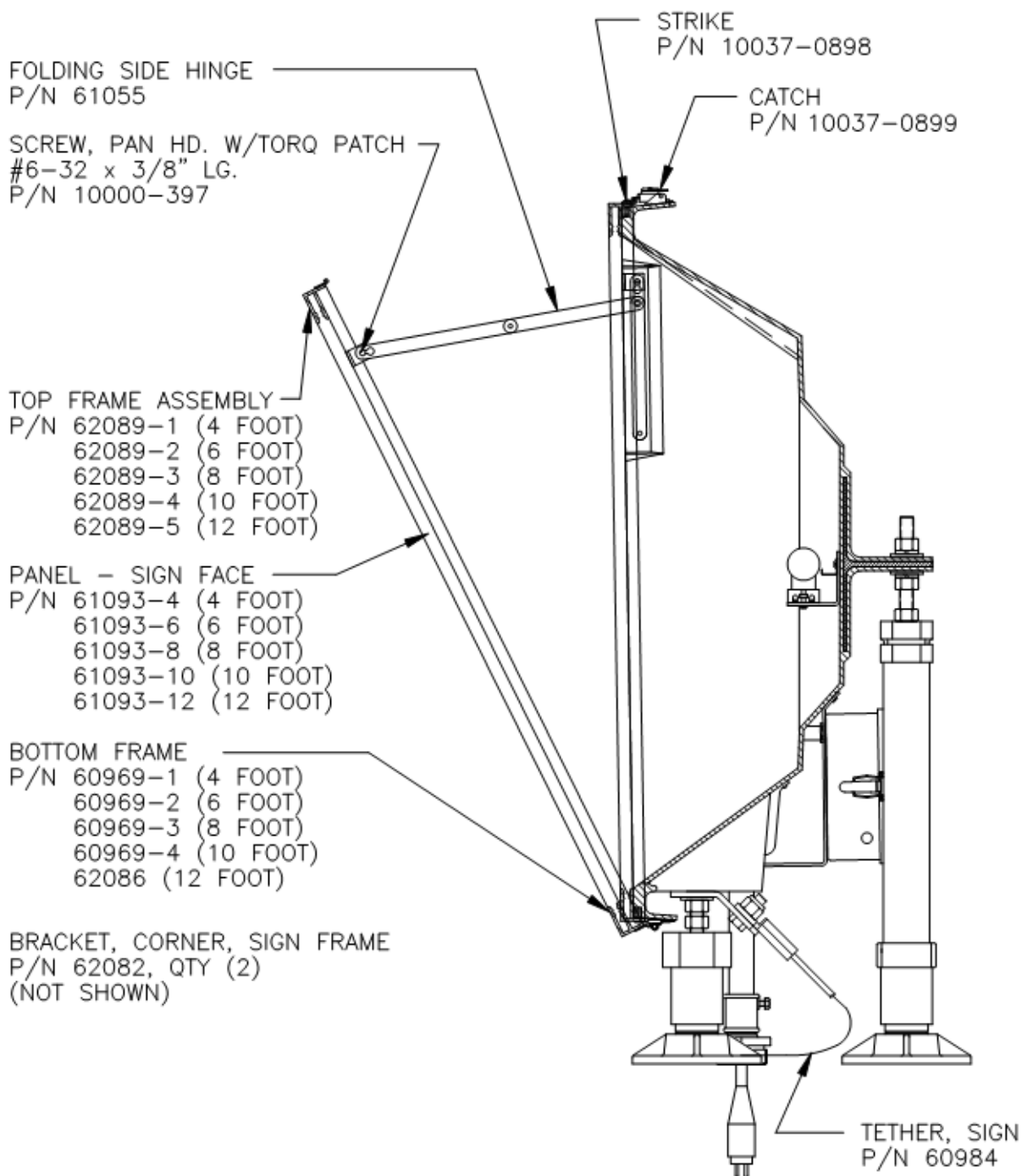


FIGURE 4-1

HINGED SIGN FACE ASSY

NOTE: SIGN FACE SHOWN BOTH CLOSED AND IN THE OPEN POSITION

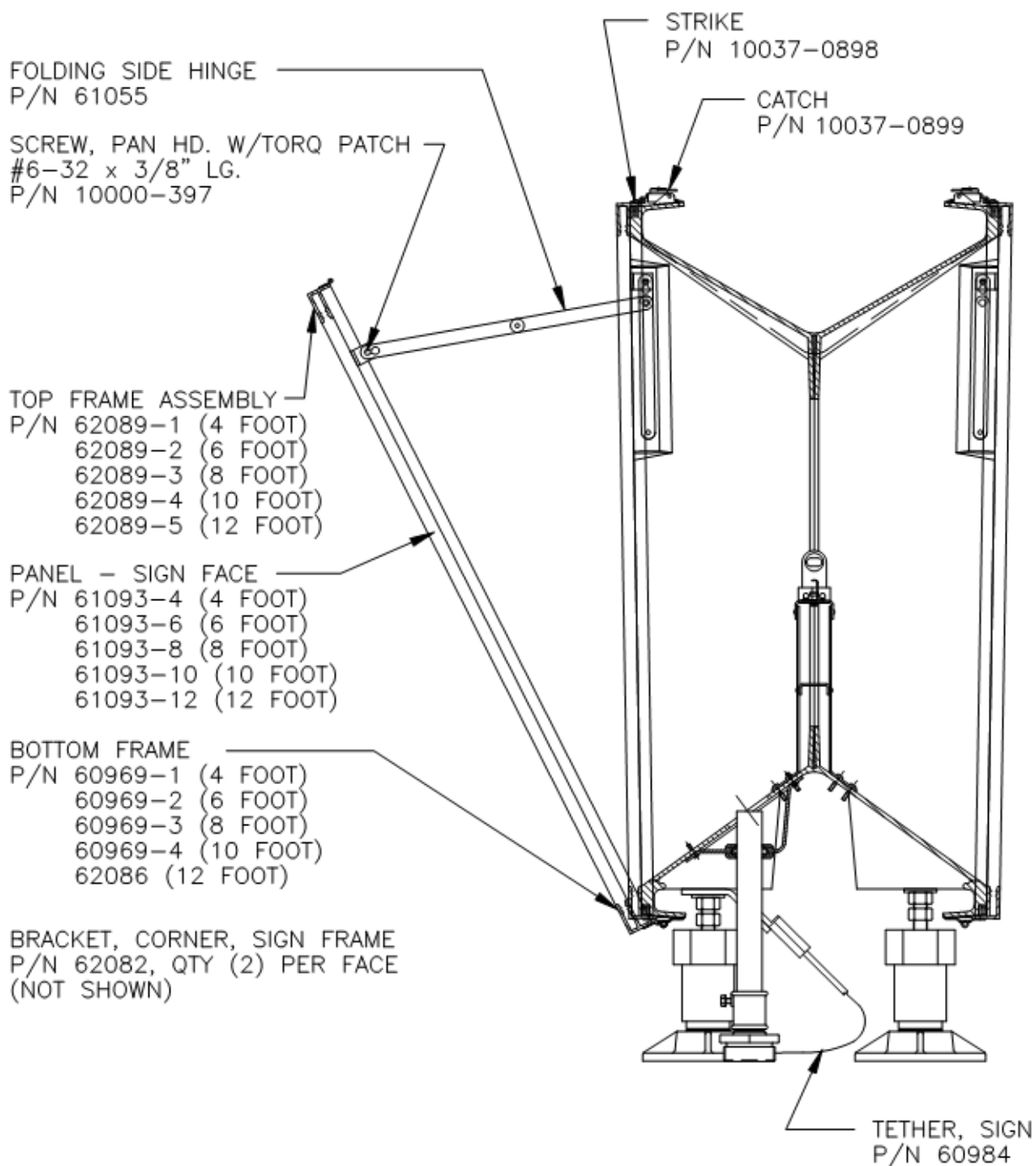


FIGURE 4-2

HINGED SIGN FACE ASSY, DOUBLE FACE SIGN

NOTE: SIGN FACE SHOWN BOTH CLOSED AND IN THE OPEN POSITION

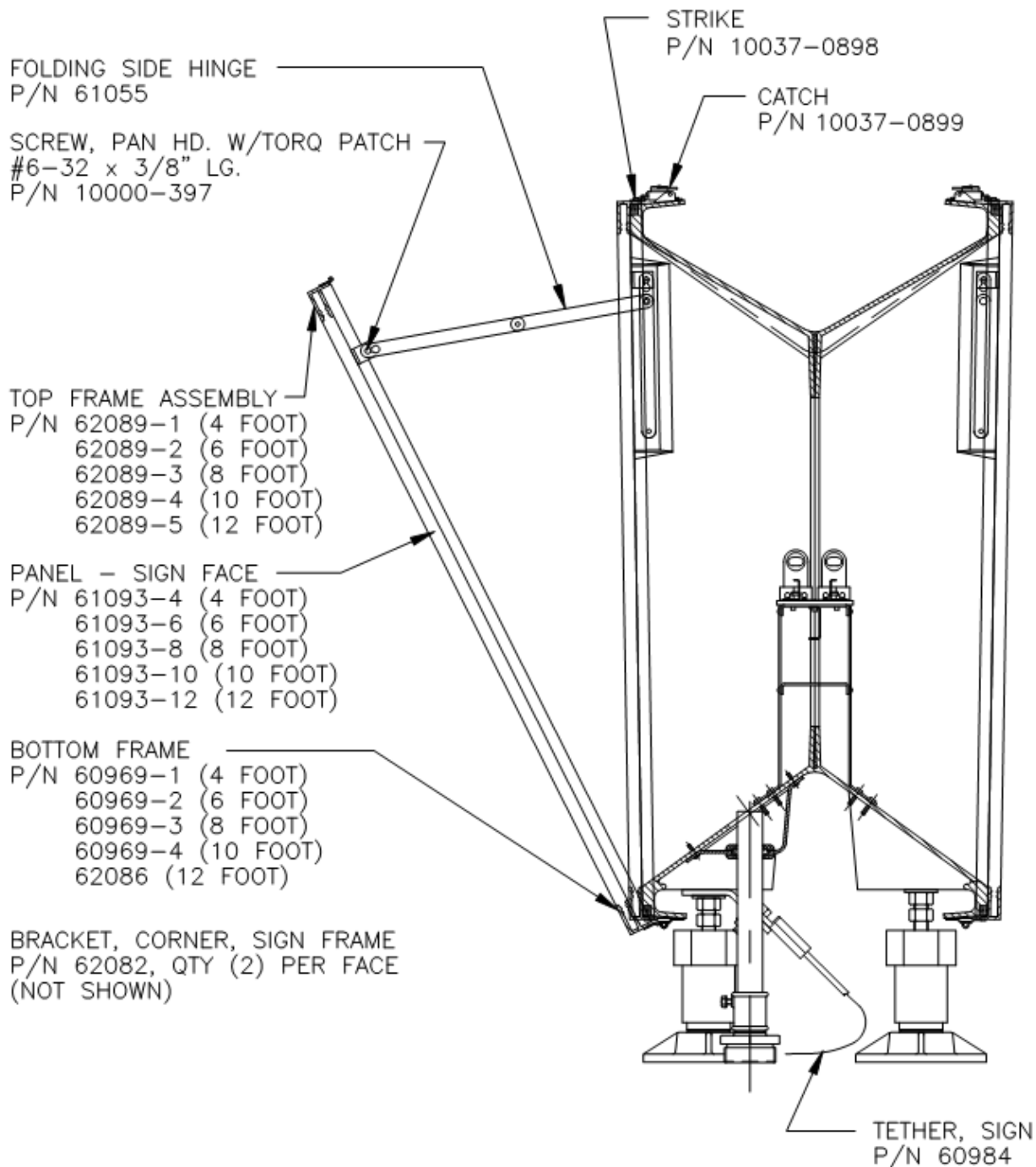


FIGURE 4-3

HINGED SIGN FACE ASSY, 6 FOOT DOUBLE FACE SIGN ONLY

NOTE: SIGN FACE SHOWN BOTH CLOSED AND IN THE OPEN POSITION

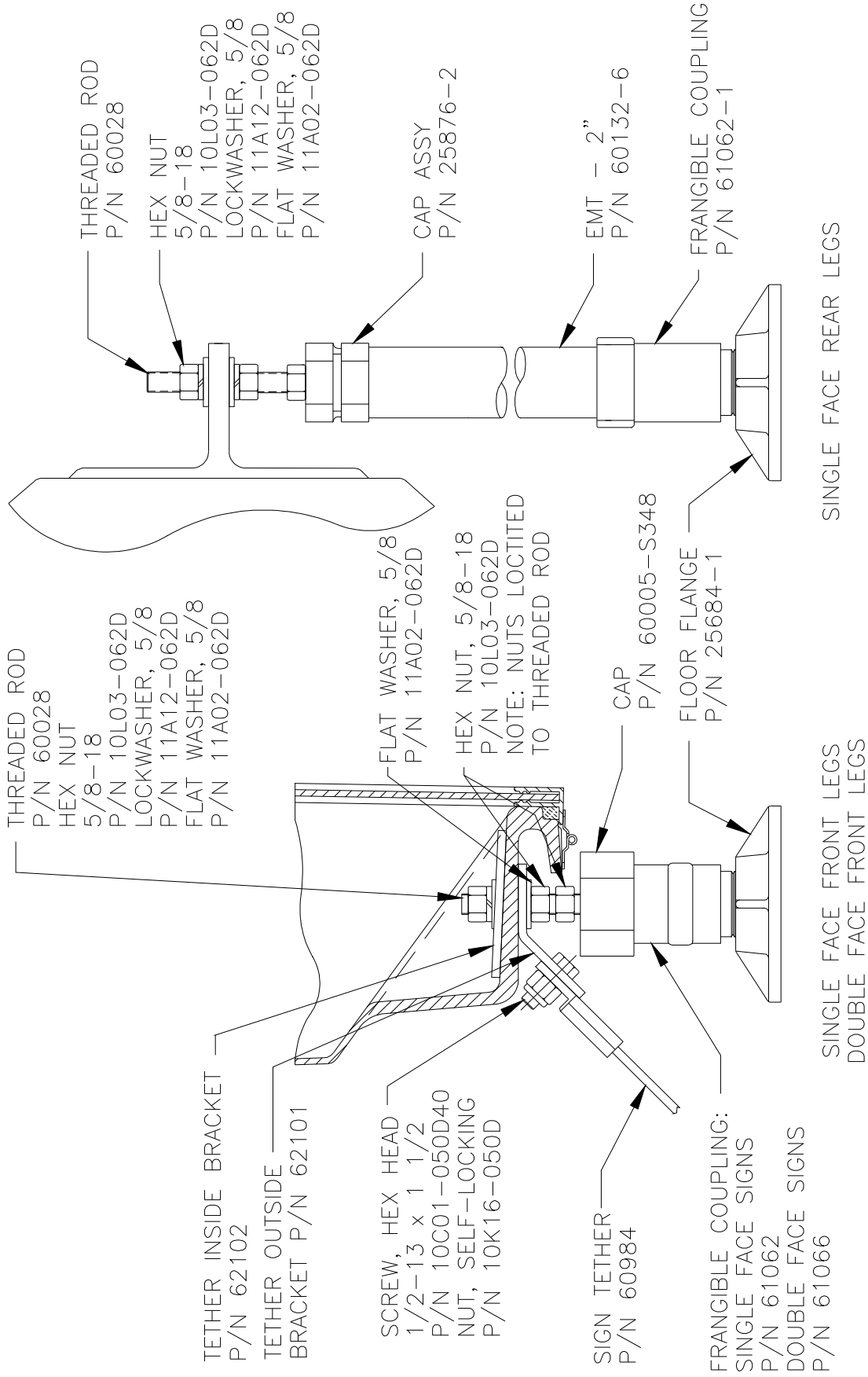


FIGURE 4-4

MOUNTING LEG DETAILS

NOTE: DOUBLE FACE REAR LEGS ARE WITHOUT TETHER AND TETHER BRACKETS

4.2.1 Sign Face Assembly Removal

Normal repairs would not require the entire Sign Face Assembly to be removed totally from the Sign. If more access is required after Step A, proceed to Step B. If still more access is required, follow Steps C and D.

Note: If steps C and D are done, it is suggested that two people be used because of the size of the face.

- A. Release and unlatch catches located at the top of the sign assembly and also on the sides of 8 foot and longer signs. Move Sign Face Assembly outward. See Figures 4-1 thru 4-3.
- B. Open the Sign Face approximately half way between full open and closed. Push the Folding Side Hinges on each end upward at the point of attachment to the Sign Face Assy forcing the keyhole slot in the Side Hinge over the #6-32 pan head screw. It may be necessary to back these screws out a turn but do not remove them. Keep a firm grip on the Sign Face Assy so as not to have it hit the ground causing unnecessary damage.
- C. While holding the Sign Face, open the Face Assy to about 45 degrees and move the assembly to the left. The Sign Face will slide off the bottom hinges.

4.2.2 Sign Face Assembly Replacement

To replace the Sign Face, proceed as follows:

- A. The bottom hinges closest to the ends of the Sign have fixed hinge pins. The hinges that are in between the end hinges have removable pins. The reason for the removable pins is to facilitate replacement of long Sign Faces. These should be removed prior to putting the face back on. See Figure 4-5 for details.
- B. Align the bottom of the Sign Face Assembly and the half- hinge with the fixed hinge pins and slide to the right. (One or two practice tries may be required.) One of the fixed hinge pins is longer than the other to facilitate alignment.
- C. Proceeding as in Step B above, put the Sign face on and secure the top with one of the two latches. Re-insert the removable hinge pins being sure they "click" into place.
- D. Snug the screws that hold the side arms so that they will not "jump" off the bracket.
- E. Secure all latches.

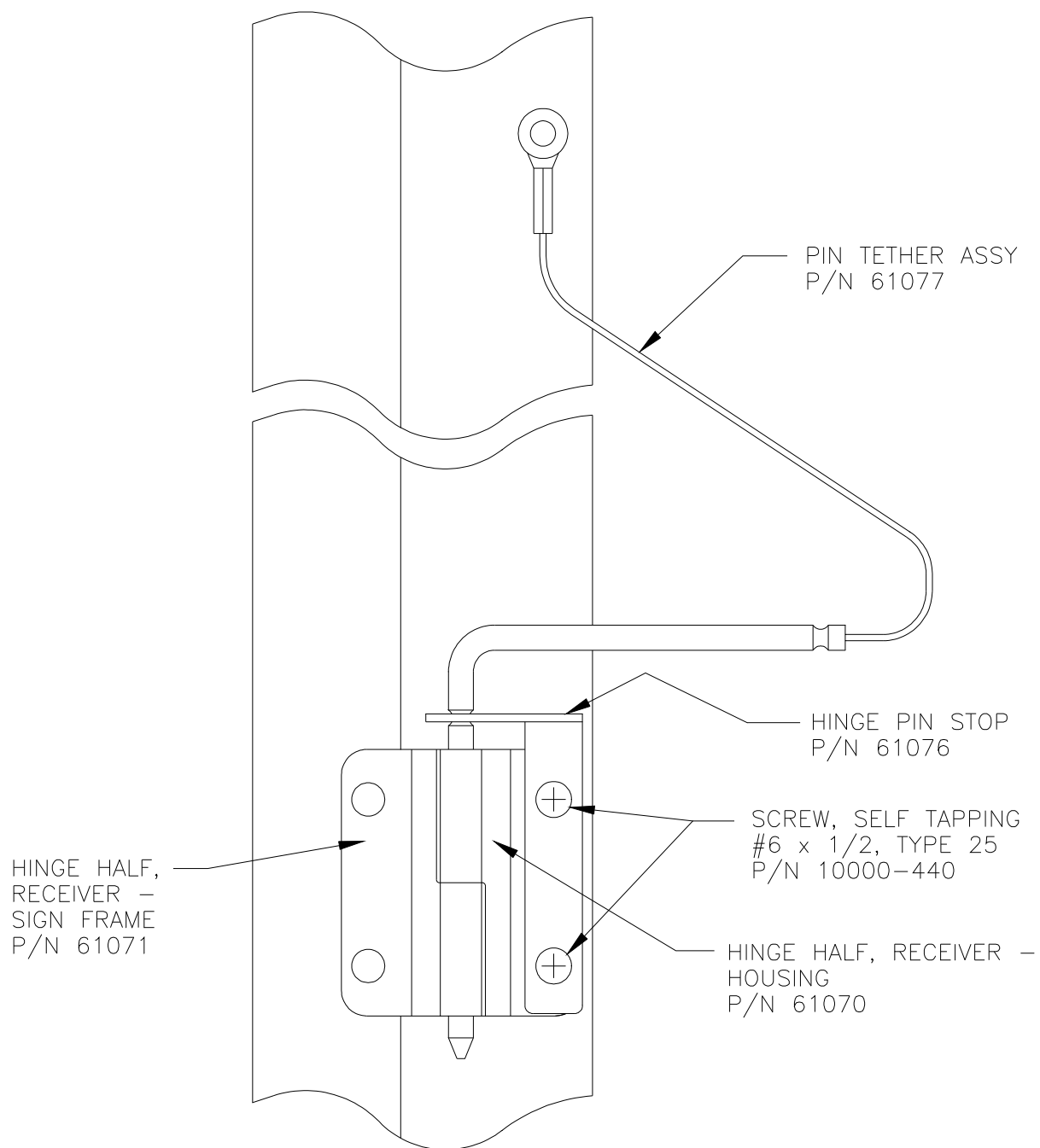


FIGURE 4-5

REMOVABLE HINGE PIN ASSY

5.0 MAINTENANCE - ELECTRICAL

5.1 Lamp Replacement

The fluorescent lamp used in the signs has an average rated life of 9,000 hours. Repeated on-off operation will decrease the life expectancy somewhat. When replacement becomes necessary, follow the procedure below.

- A. Be sure power to sign has been turned off. If it is necessary to relamp without removing regulator power to the sign loop, an ON-OFF toggle switch has been provided on the ballast housing to permit turn-off of the power to the tube sockets. Set this switch to the Off position.
- B. Release and unlatch catches located at top of sign assembly. Move Sign Face Assembly outward.
- C. Push old lamp toward spring loaded socket end and then out. Carefully remove lamp from sign housing.
- D. Push replacement lamp toward spring loaded socket and then into place.
- E. Close Sign Face Assembly and secure top catches. Make sure that the Sign Face catches are secured to prevent water leakage.
- F. Make sure toggle switch on the ballast housing is returned to the ON position for normal sign operation.

WARNING – Fluorescent Lamps contain Mercury (Hg) which must be recycled or disposed of as Hazardous Waste. Do not dispose of in generated Waste Stream.

5.2 Electrical Package

If electrical problems are suspected after replacing fluorescent tube(s), proceed as follows.

- A. Remove sign power.

WARNING

Fluorescent ballasts employ a high firing voltage and trouble shooting should be limited to visual inspection and continuity checking **without power applied.**

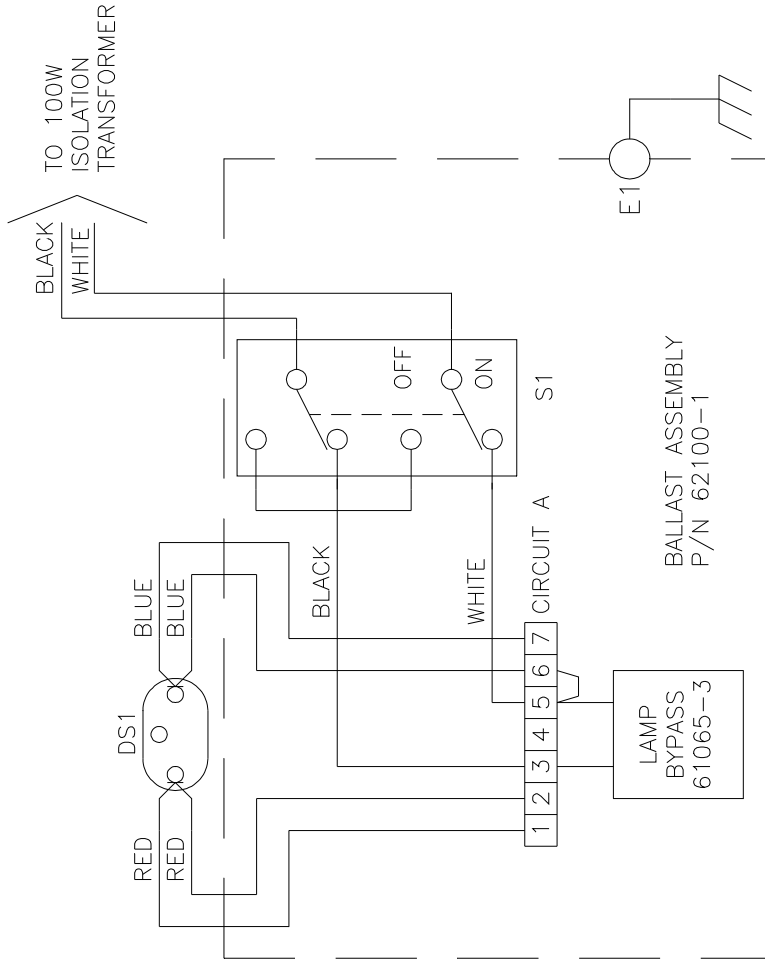
- B. Remove cover from the ballast housing.
- C. Inspect and check lead connections at terminal strip(s).

5.2 Electrical Package (cont)

- D. Refer to Figures 5-1 thru 5-5. Lamp socket continuity can be checked by removing lead from terminal 1 and measuring resistance from this lead to the other lead remaining on terminal 2. Resistance should measure approximately 1 ohm. Repeat the above, disconnecting the lead to terminal 7 and measuring from this lead to terminal 6. If both pair of socket leads indicate continuity, fluorescent tube socket connections are satisfactory. Reconnect leads.
- E. Making certain that toggle switch on ballast housing is in ON position, check for operation.
- F. If sign fails to operate, replace ballast.
- G. Replace ballast cover.

5.3 TROUBLE SHOOTING GUIDE

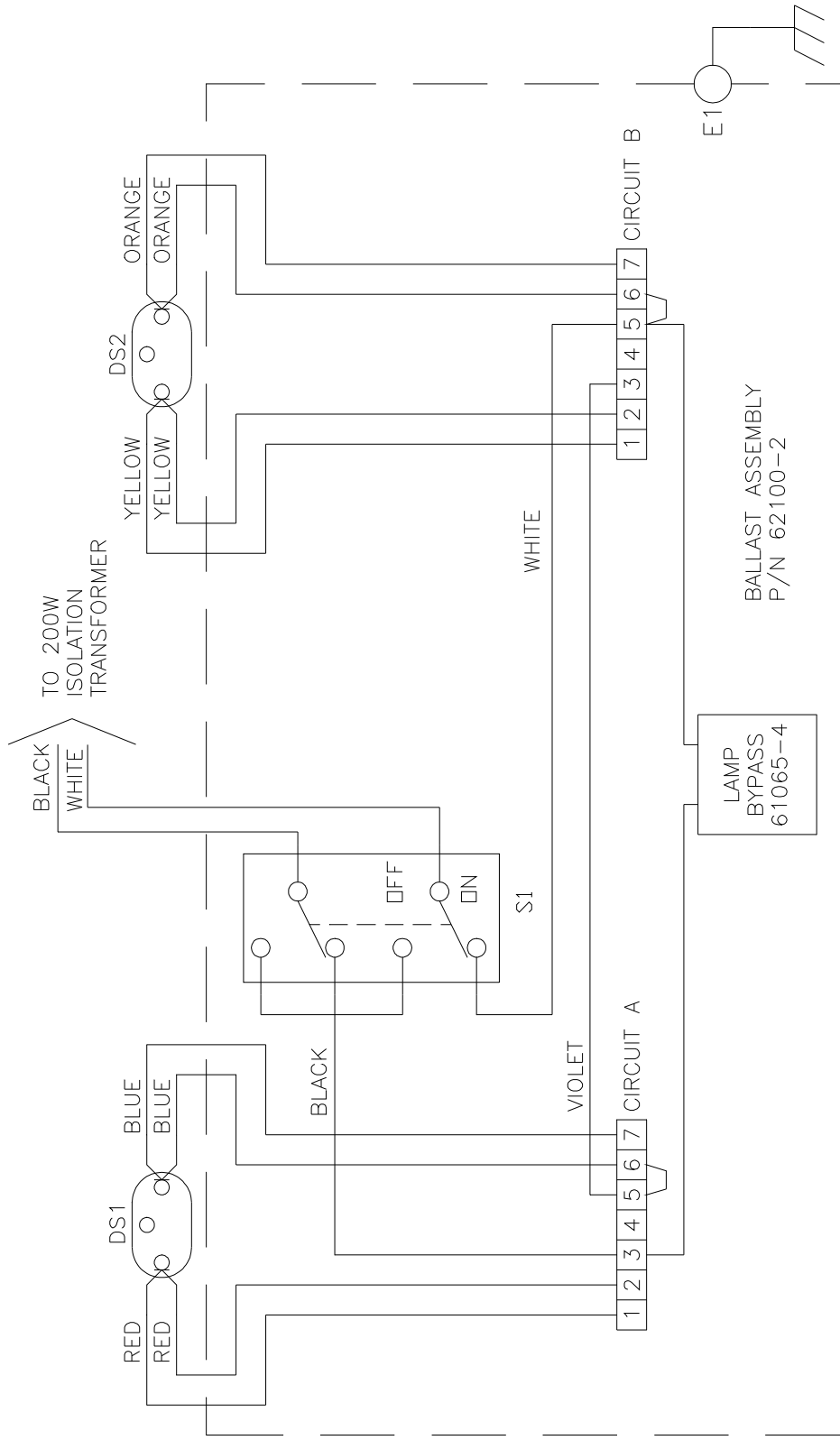
PROBLEM	PROBABLE CAUSE	SOLUTION
Unit fails to illuminate	1) Defective lamp 2) Defective isolation transformer 3) Defective Ballast 4) Runway Circuit problem 5) ON-OFF relamping switch, S1, in OFF position 6) Bad Connection 7) Lamp Bypass	1) Replace Lamp 2) Replace transformer 3) Replace Ballast 4) Check runway circuit & regulator for proper operation 5) Switch to ON 6) Check Wiring per Figs. 5-1 thru 5-5 7) Check that jumper is correct for the regulator
Unit flickers at turn on (cold temperature) fluorescent lamp	This is normal operation	None required
Unit flickers continuously	1) Defective lamp 2) Defective lamp bypass board	1) Replace lamp 2) Replace board



WIRING DIAGRAM - 1 LAMP 45 TURN BALLAST

FIGURE 5-1

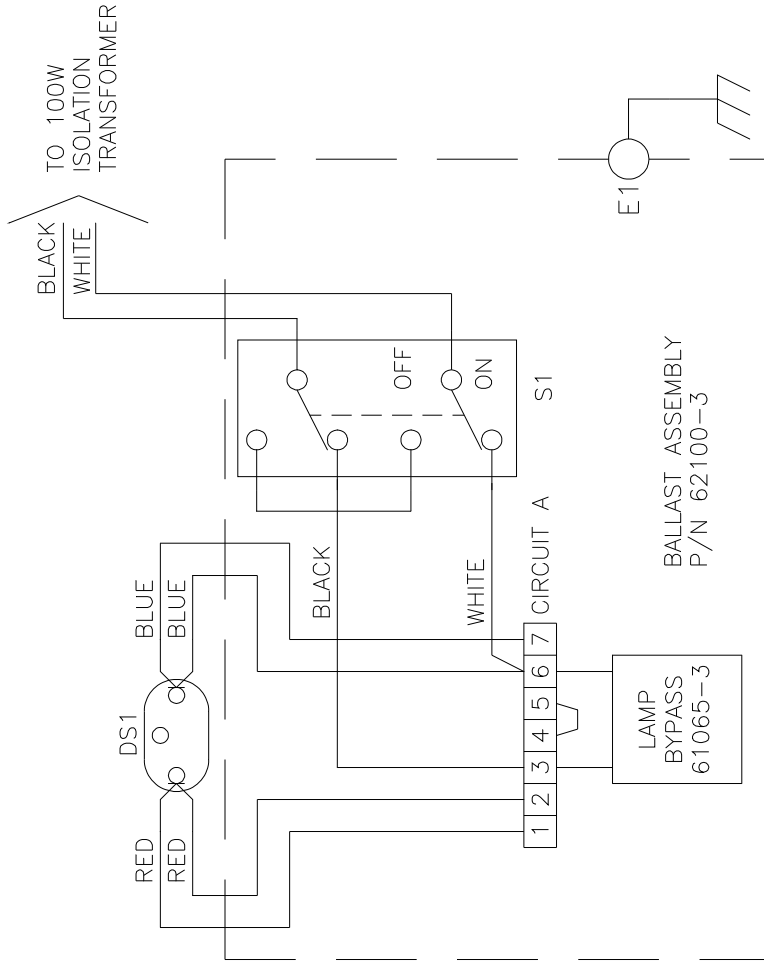
(USED ON 60915-4, 60915-6)



WIRING DIAGRAM - 2 LAMPS 45 TURN BALLAST

FIGURE 5-2

(USED ON 60915-8, 60915-10)

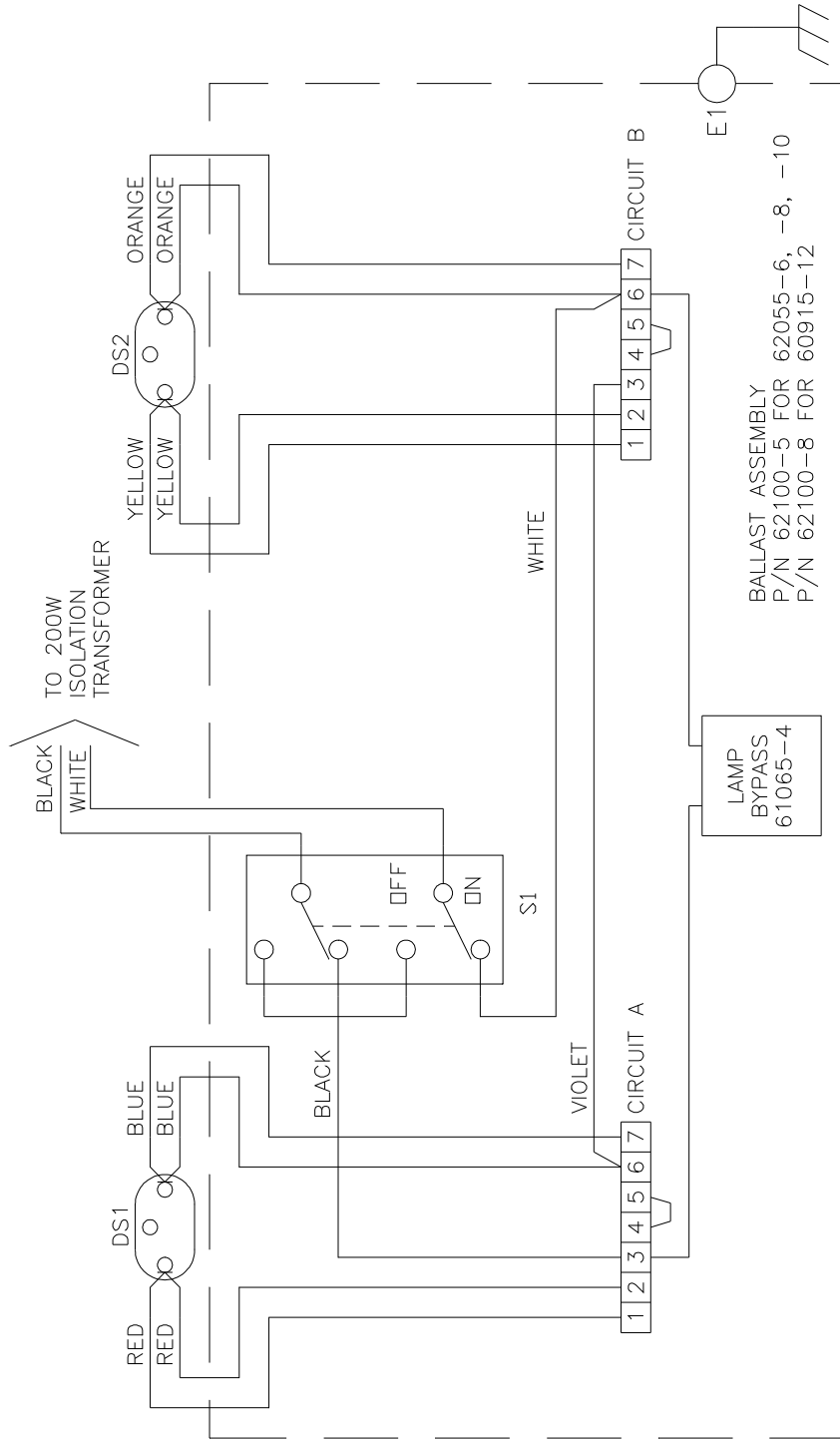


WIRING DIAGRAM - 1 LAMP

55 TURN BALLAST

FIGURE 5-3

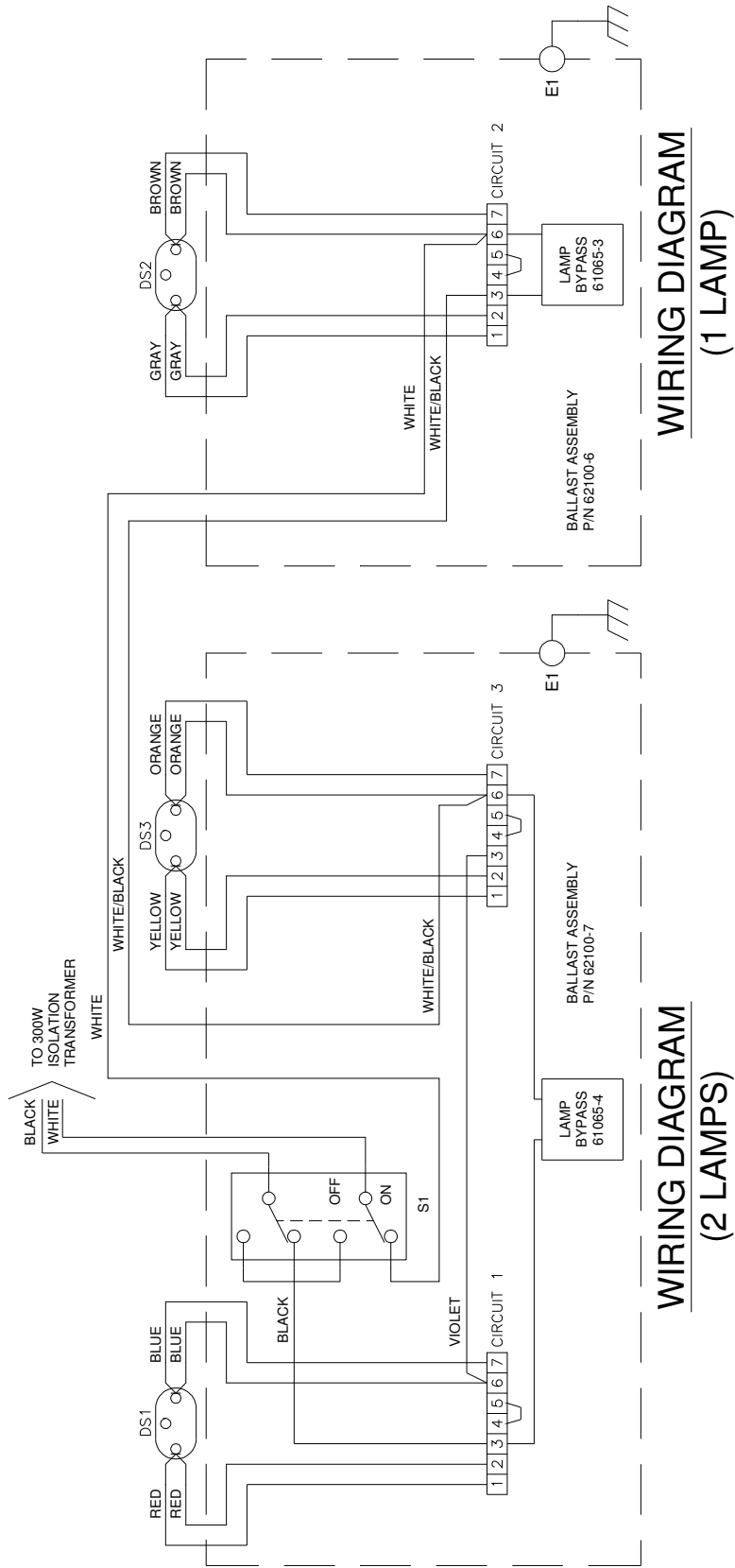
(USED ON 62055-4)



WIRING DIAGRAM - 2 LAMPS
55 TURN BALLAST

FIGURE 5-4

(USED ON 62055-6, 62055-8, 62055-10, 60915-12)



WIRING DIAGRAM - 3 LAMPS
55 TURN BALLAST(S)

FIGURE 5-5

(USED ON 62055-12)

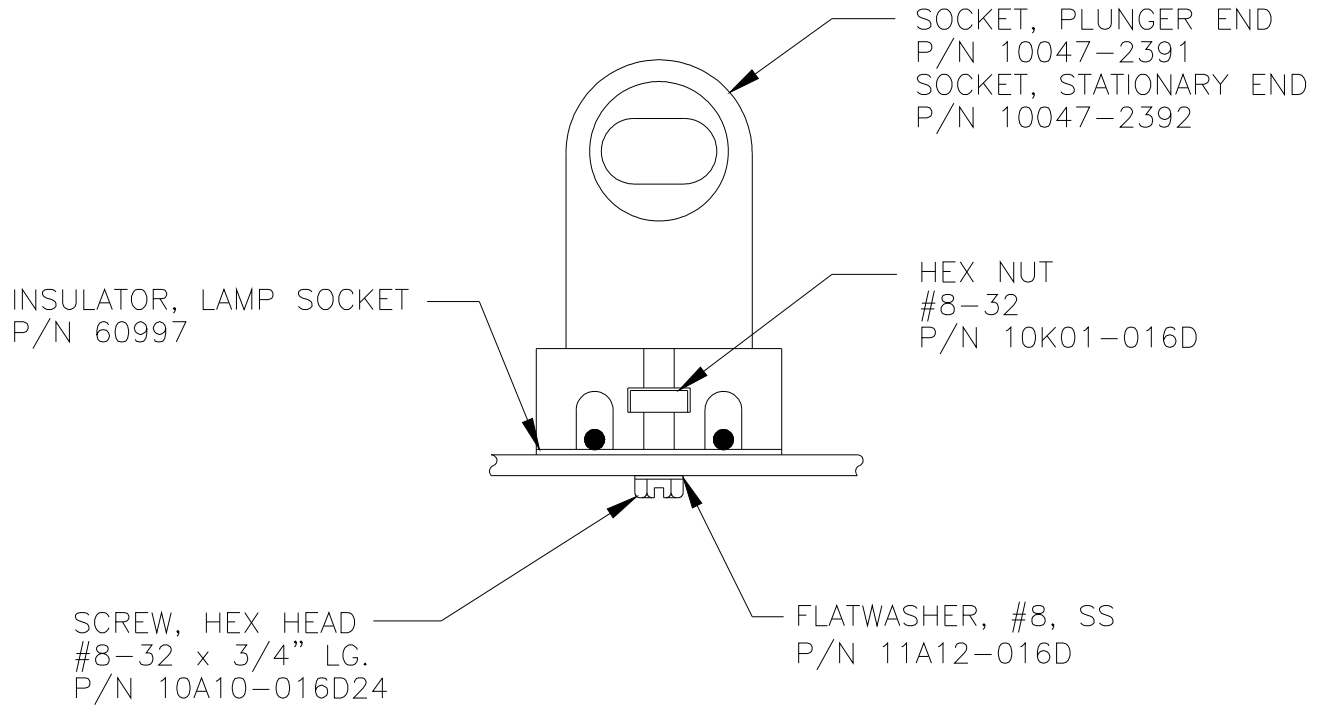


FIGURE 5-6

TYPICAL LAMP SOCKET MOUNTING

PART NO.	NO OF LAMPS	LAMP P/N	FLUORESCENT LAMP TYPE OF	LAMP WATTAGE	VA	POWER FACTOR	BALLAST ASSEMBLY	BALLAST PRIMARY TURNS
60915-4	1	10047-2523	F24T12/D/HO	35	54	.85	62100-1	45
60915-6	1	10047-2524	F36T12/SGN/HO	45	66	.87	62100-1	45
60915-8	2	10047-2523	F24T12/D/HO	35	110	.85	62100-2	45
60915-10	2	10047-2524	F36T12/SGN/HO	45	130	.85	62100-2	45
60915-12	2	10047-2524	F36T12/SGN/HO	45	163	.88	62100-8	55
62055-4	1	10047-1573	F36T12/CW/HO	45	79	.87	62100-3	55
62055-6	2	10047-2524	F36T12/SGN/HO	45	163	.88	62100-5	55
62055-8	2	10047-1573	F36T12/CW/HO	45	163	.88	62100-5	55
62055-10	2	10047-1573	F36T12/CW/HO	45	163	.88	62100-5	55
62055-12	3	10047-1573	F36T12/CW/HO	45	221	.85	62100-6 62100-7	55

SINGLE FACE SIGNS

PART NO.	NO OF LAMPS	SIZE OF ISOLATION TRANSFORMER
60915-4	1	100 WATT (6.6:6.6 - P/N 33004)
60915-6	1	100 WATT (6.6:6.6 - P/N 33004)
60915-8	2	200 WATT (6.6:6.6 - P/N 33006)
60915-10	2	200 WATT (6.6:6.6 - P/N 33006)
60915-12	2	200 WATT (6.6:6.6 - P/N 33006)

DOUBLE FACE SIGNS

PART NO.	NO OF LAMPS	SIZE OF ISOLATION TRANSFORMER
62055-4	1	100 WATT (6.6:6.6 - P/N 33004)
62055-6	2	200 WATT (6.6:6.6 - P/N 33006)
62055-8	2	200 WATT (6.6:6.6 - P/N 33006)
62055-10	2	200 WATT (6.6:6.6 - P/N 33006)
62055-12	3	300 WATT (6.6:6.6 - P/N 33010)

FIGURE 5-7

ELECTRICAL INFORMATION

6.0 PARTS LIST

6.1 Single Face Signs

PART NO.	DESCRIPTION	-4	-6	-8	-10	-12
CAS1M-P-B-.86	LEAD ASSY	1	1	1	1	1
62100-1	BALLAST ASSY - SINGLE LAMP (45 TURN)	1	1	-	-	-
62100-2	BALLAST ASSY - DOUBLE LAMPS (45 TURN)	-	-	1	1	-
62100-8	BALLAST ASSY - DOUBLE LAMPS (55 TURN)	-	-	-	-	1
61106	BALLAST CONTAINED IN BALLAST ASSY	1	1	2	2	2
60927	SWITCH, SUB-ASSY	1	1	1	1	1
60028	THREADED ROD	2	2	3	3	4
60005-S348	CAP	2	2	3	3	4
10L03-062D	NUT, HEX, 5/8-18	12	12	18	18	24
11A02-062D	WASHER, 5/8	8	8	12	12	16
25684-1	FLOOR FLANGE (PART OF LEG ASSY)	4	4	6	6	8
60149-2	REAR LEG ASSY	2	2	3	3	4
61062	FRANGIBLE COUPLING	4	4	6	6	8
61065-3	LAMP BYPASS ASSY - SINGLE LAMP	1	1	-	-	-
61065-4	LAMP BYPASS ASSY - DOUBLE LAMP	-	-	1	1	1
10047-2523	FLUORESCENT LAMP (24") DAYLIGHT	1	-	2	-	-
10047-2524	FLUORESCENT LAMP (36") SIGN WHITE	-	1	-	2	2

6.2 Double Face Signs

PART NO.	DESCRIPTION	-4	-6	-8	-10	-12
CAS1M-P-B-.86	LEAD ASSY	1	1	1	1	1
62100-3	BALLAST ASSY - SINGLE LAMP (55 TURN)	1	-	-	-	-
62100-5	BALLAST ASSY - DOUBLE LAMP (55 TURN)	-	1	1	1	-
62100-6	BALLAST ASSY - SINGLE LAMP W/O SWITCH (55 TURN)	-	-	-	-	1
62100-7	BALLAST ASSY - DOUBLE LAMP (55 TURN)	-	-	-	-	1
61106	BALLAST CONTAINED IN BALLAST ASSY	1	1	2	2	3
60927	SWITCH, SUB-ASSY	1	1	1	1	1
60028	THREADED ROD	4	4	6	6	8
60005-S348	CAP	4	4	6	6	8
10L03-062D	NUT, HEX, 5/8-18	12	12	18	18	24
11A02-062D	WASHER, 5/8	8	8	12	12	16
25684-1	FLOOR FLANGE	4	4	6	6	8
61066	FRANGIBLE COUPLING - MODIFIED	4	4	6	6	8
61065-3	LAMP BYPASS ASSY - SINGLE LAMP	1	1	-	-	1
61065-4	LAMP BYPASS ASSY - DOUBLE LAMP	-	-	1	1	1
10047-1573	FLUORESCENT LAMP, (36") COOL WHITE	1	-	2	2	3
10047-2524	FLUORESCENT LAMP, (36") SIGN WHITE	-	2	-	-	-

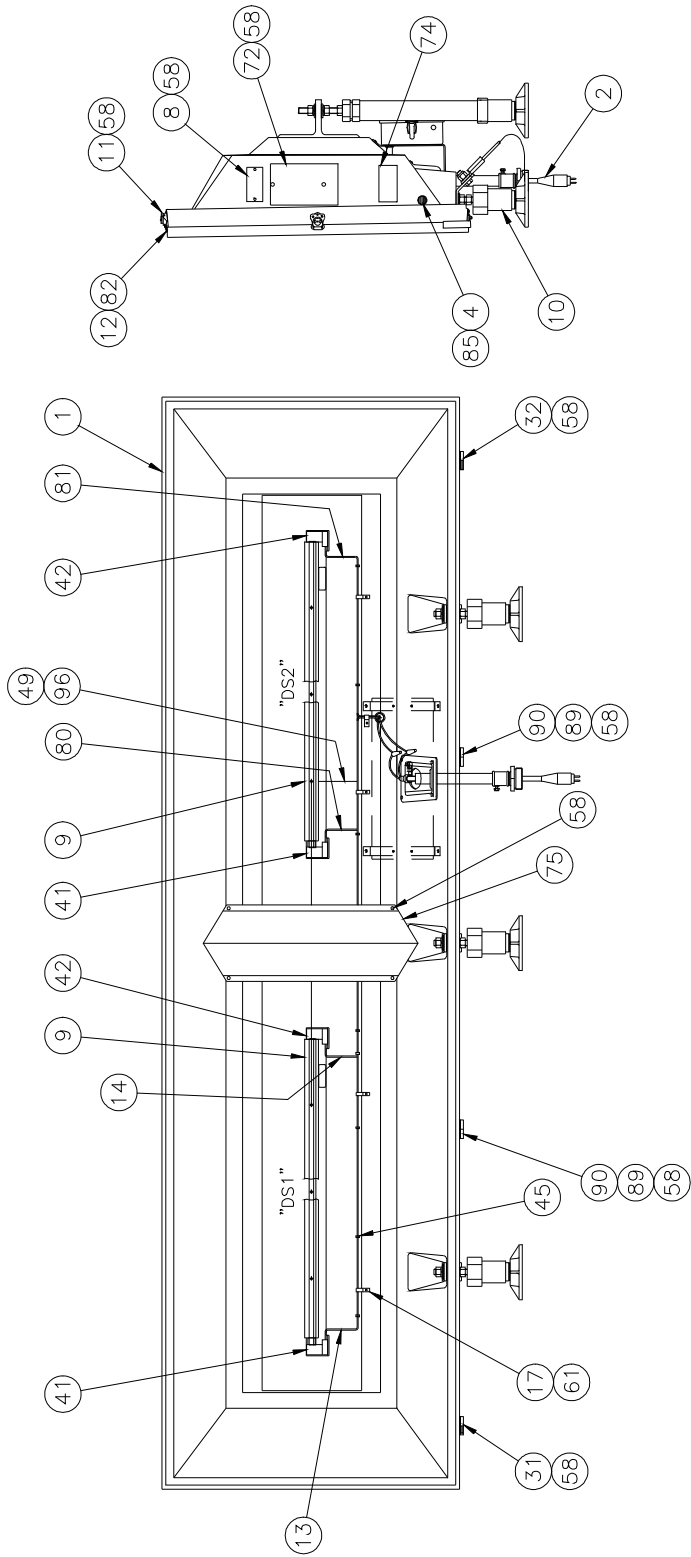


FIGURE 6-1
TYPICAL SINGLE FACE SIGN ASSEMBLY
10 FOOT SINGLE FACE SIGN SHOWN

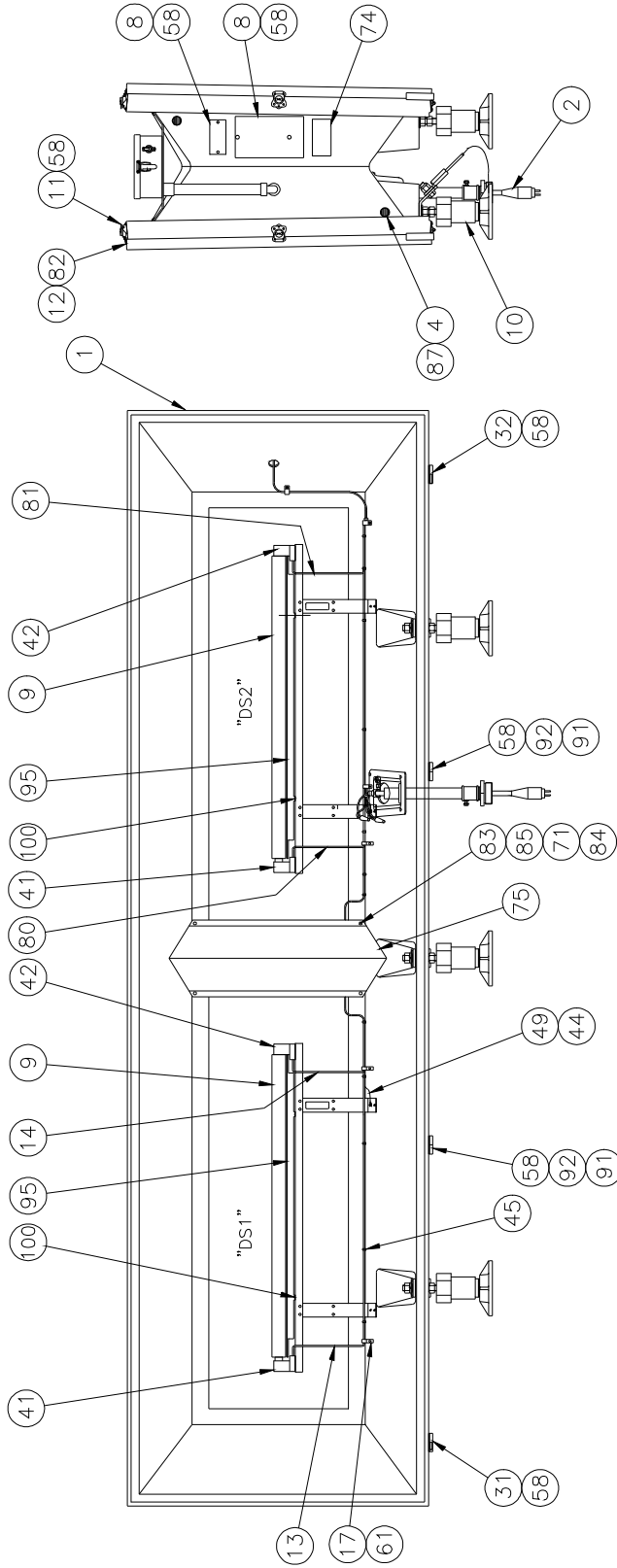


FIGURE 6-2

TYPICAL DOUBLE FACE SIGN ASSEMBLY
10 FOOT DOUBLE FACE SIGN SHOWN

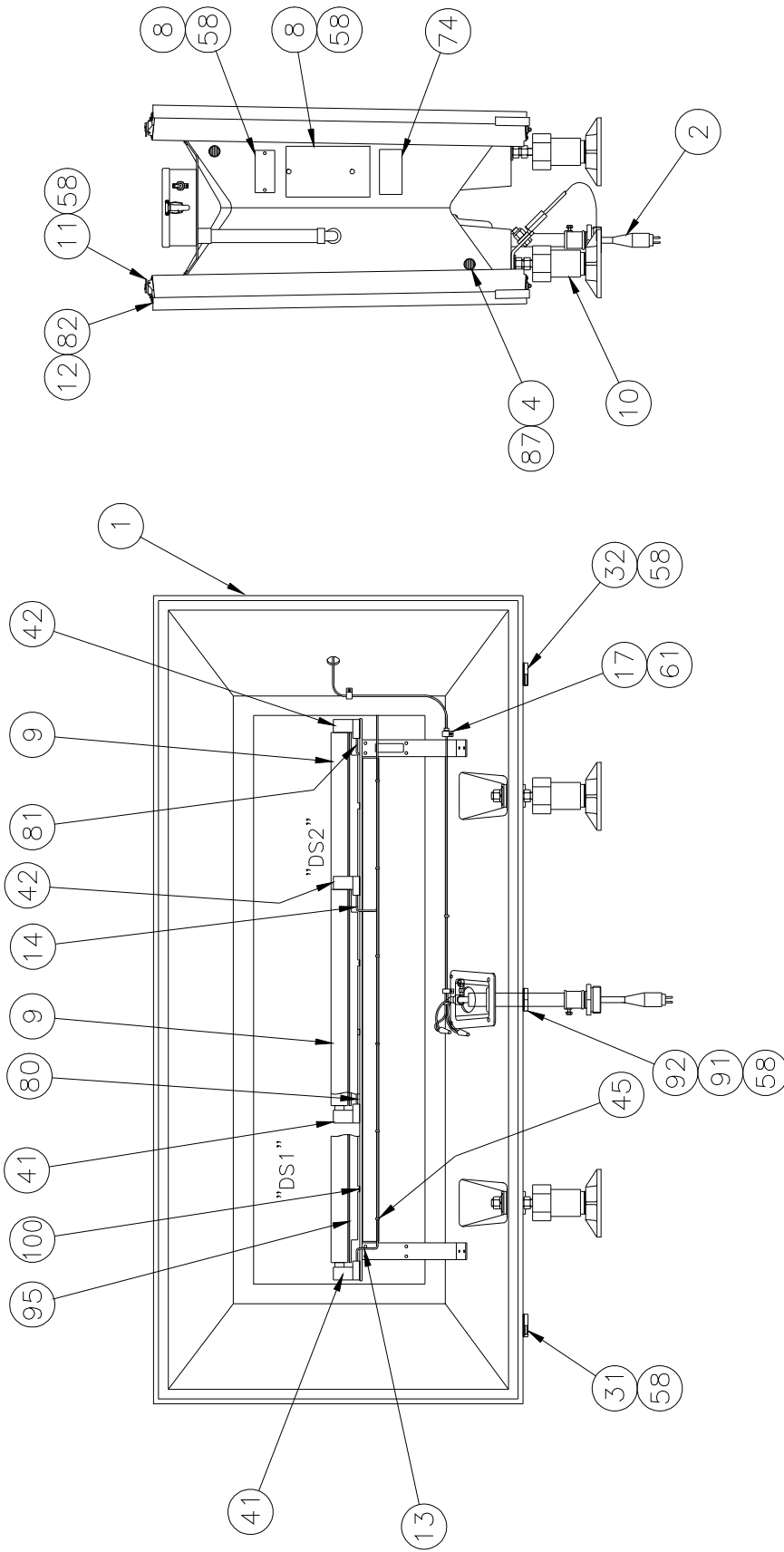


FIGURE 6-3

6 FOOT DOUBLE FACE SIGN ASSEMBLY

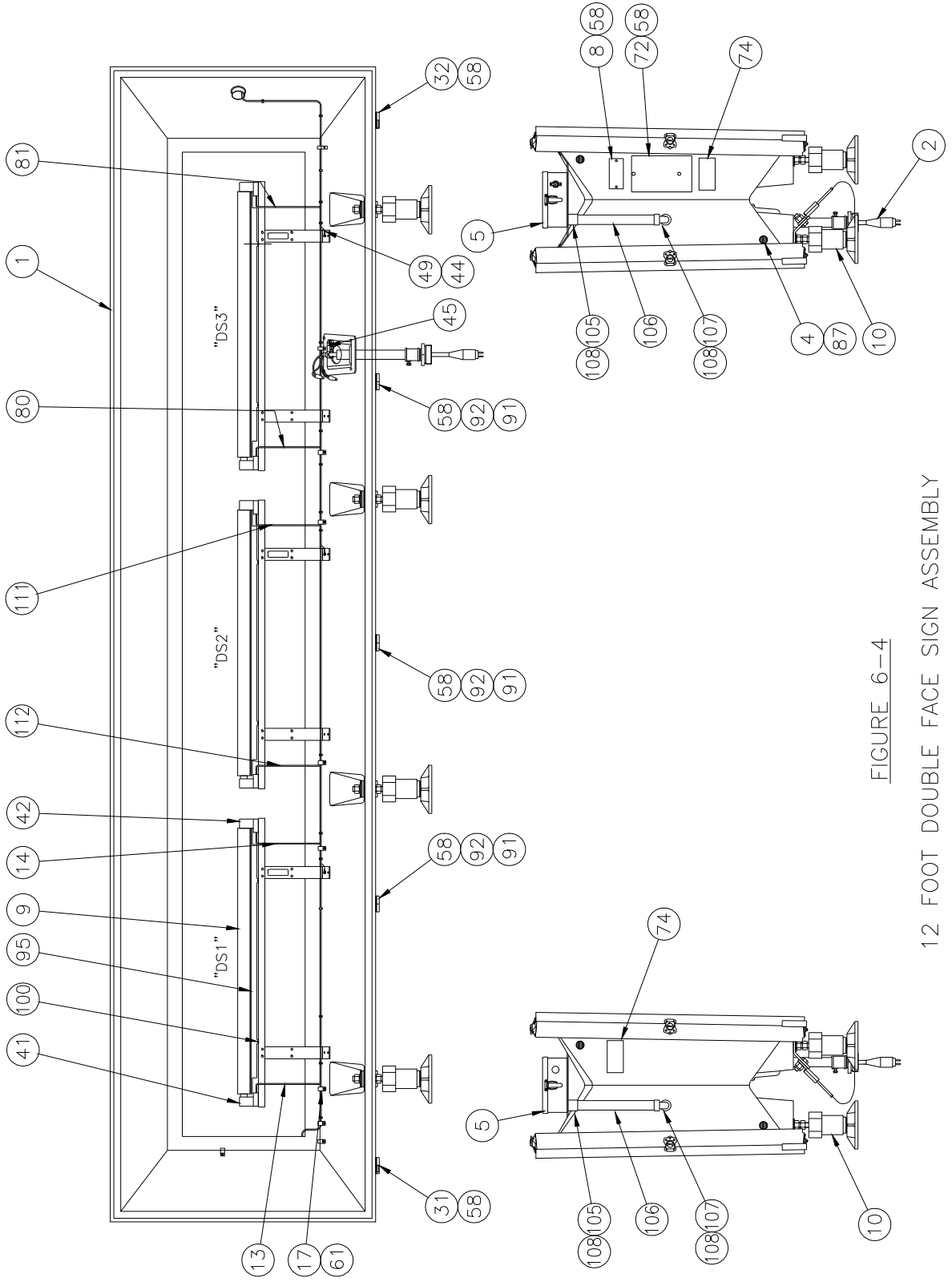
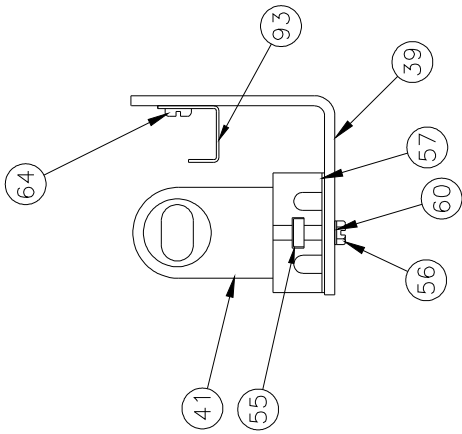
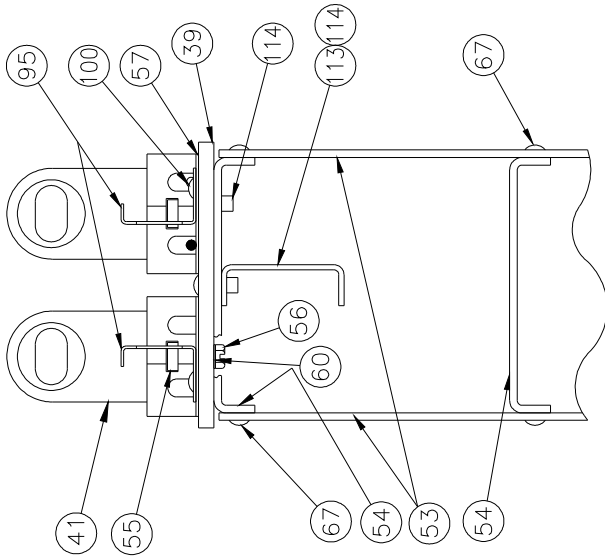


FIGURE 6-4
12 FOOT DOUBLE FACE SIGN ASSEMBLY



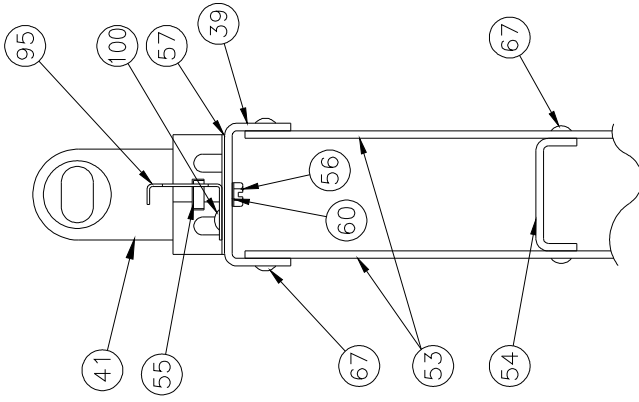
TYPICAL SINGLE FACE

USE SINGLE FACE PARTS LIST



TYPICAL 6 FOOT DOUBLE FACE

USE DOUBLE FACE PARTS LIST



TYPICAL DOUBLE FACE

USE DOUBLE FACE PARTS LIST

FIGURE 6-5

TYPICAL LAMP MOUNTING

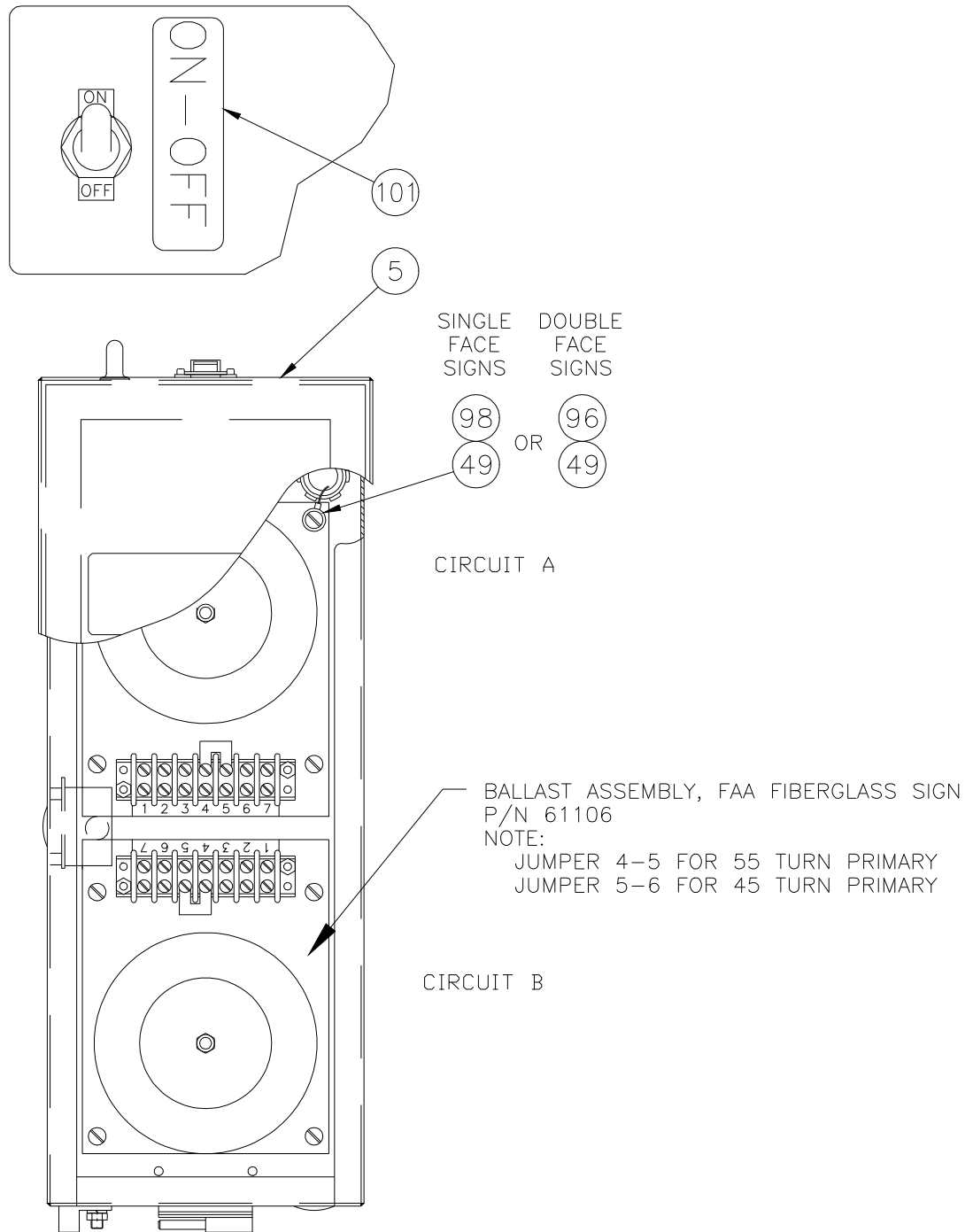
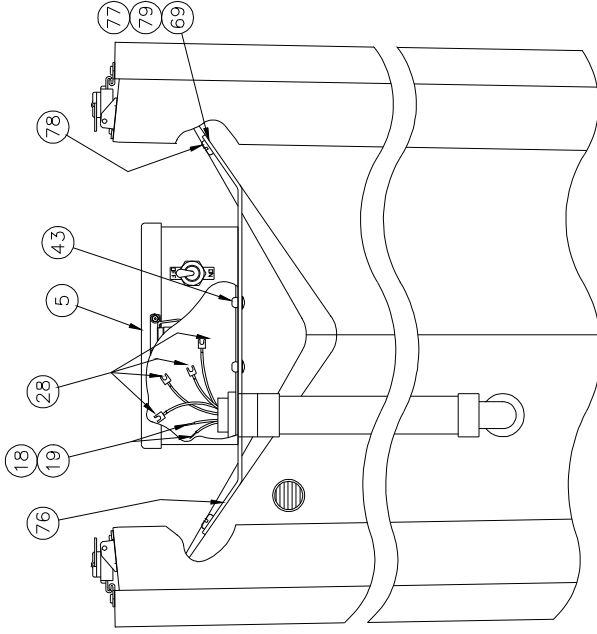
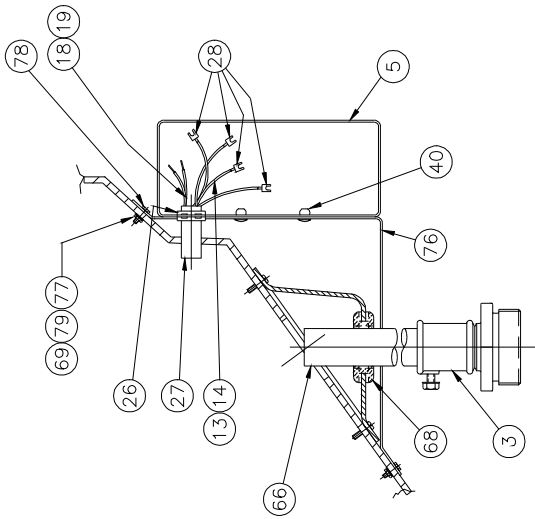


FIGURE 6-6

TYPICAL 2 LAMP BALLAST BOX



TYPICAL DOUBLE FACE ASSEMBLY
USE DOUBLE FACE PARTS LIST



TYPICAL SINGLE FACE ASSEMBLY
USE SINGLE FACE PARTS LIST

NOTE: POWER ENTRY, ITEMS 3, 66, & 68
SAME FOR DOUBLE FACE ASSEMBLY

FIGURE 6--7
TYPICAL BALLAST BOX MOUNTING
AND POWER ENTRY

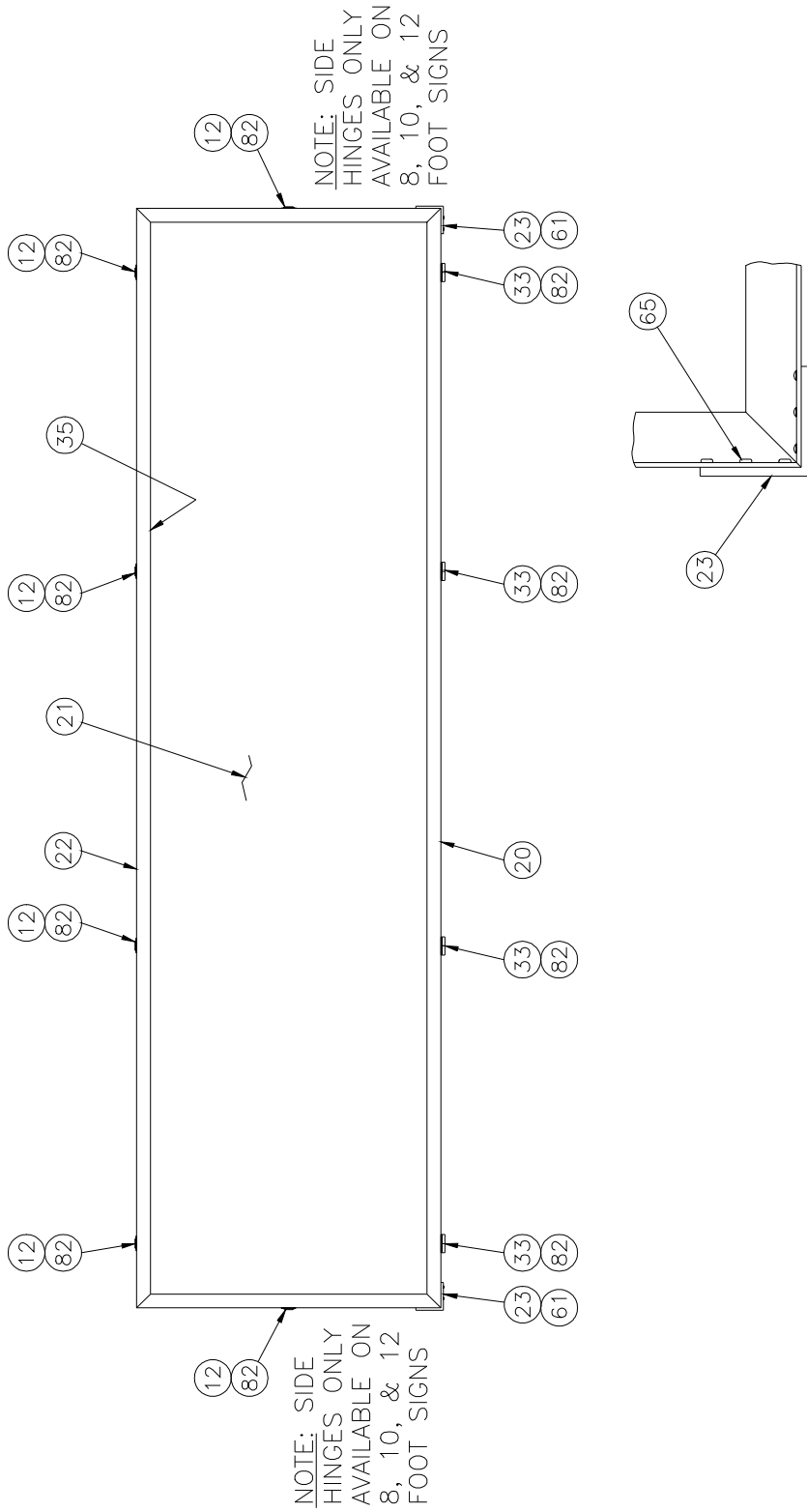


FIGURE 6-8
TYPICAL SIGN FACE ASSEMBLY

CROUSE-HINDS AIRPORT LIGHTING PRODUCTS WINDSOR, CT., U.S.A. 06095		PL60915				
PART LISTING - SINGLE FACE SIGN ASSEMBLY						
ITEM	PART NUMBER	DESCRIPTION	QUANTITY BY DASH NO.			
			-4	-6	-8	-10-12
1	60986-2	HOUSING, DRILLING, 4 FOOT	1	-	-	-
1	60987-2	HOUSING, DRILLING, 6 FOOT	-	1	-	-
1	60988-2	HOUSING, DRILLING, 8 FOOT	-	-	1	-
1	60989-2	HOUSING, DRILLING, 10 FOOT	-	-	-	1
1	60990-2	HOUSING, DRILLING, 12 FOOT	-	-	-	1
2	CASIM-P-B-.86	LEAD ASSEMBLY	1	1	1	1
3	50184	COUPLING, FRANGIBLE	1	1	1	1
4	60068	LOUVER	2	2	2	2
5	62100-1	BALLAST ASSEMBLY, SINGLE	1	1	-	-
5	62100-2	BALLAST ASSEMBLY, DOUBLE	-	-	1	1
5	62100-8	BALLAST ASSEMBLY, DOUBLE	-	-	-	1
6	10L03-062D	NUT, HEX, SS, #5/8-18	8	8	12	12 16
7	11A02-062D	WASHER, FLAT, SS, #5/8	8	8	12	12 16
8	60162	NAMEPLATE, WARNING	1	1	1	1
9	10047-2523	FLUORESCENT LAMP, 24"	1	-	2	-
9	10047-1573	FLUORESCENT LAMP, 36"	-	1	-	2 2
10	61057-1	LEG ASSEMBLY	2	2	3	3 4
11	10037-0899	CATCH	2	3	6	6 7
12	10037-0898	STRIKE	2	3	6	6 7

CROUSE-HINDS AIRPORT LIGHTING PRODUCTS WINDSOR, CT., U.S.A. 06096		PL60915			
PART LISTING - SINGLE FACE SIGN ASSEMBLY					
ITEM	PART NUMBER	DESCRIPTION	QUANTITY BY DASH NO.		
			-4	-6	-8 -10 -12
13	10046-241-2	WIRE, #16AWG, RED	A/RA/RA/RA/RA/R		
14	10046-241-6	WIRE, #16AWG, BLUE	A/RA/RA/RA/RA/R		
15	10053-166	TY-RAP	1	1	1
16	10047-1434	WIRE NUT	2	2	2
17	10047-412	P-CLIP	3	3	6
18	10046-58	WIRE, #16AWG, WHITE	A/RA/RA/RA/RA/R		
19	10046-95	WIRE, #16AWG, BLACK	A/RA/RA/RA/RA/R		
20	60969-1	BOTTOM FRAME, 4 FOOT	1	-	-
20	60969-2	BOTTOM FRAME, 6 FOOT	-	1	-
20	60969-3	BOTTOM FRAME, 8 FOOT	-	-	1
20	60969-4	BOTTOM FRAME, 10 FOOT	-	-	1
20	62086	BOTTOM FRAME, 12 FOOT	-	-	1
21	61093-4	PANEL - SIGN FACE, 4 FOOT	1	-	-
21	61093-6	PANEL - SIGN FACE, 6 FOOT	-	1	-
21	61093-8	PANEL - SIGN FACE, 8 FOOT	-	-	1
21	61093-10	PANEL - SIGN FACE, 10 FOOT	-	-	1
21	61093-12	PANEL - SIGN FACE, 12 FOOT	-	-	1
22	62089-1	TOP FRAME ASSEMBLY, 4 FOOT	1	-	-
22	62089-2	TOP FRAME ASSEMBLY, 6 FOOT	-	1	-

CROUSE-HINDS AIRPORT LIGHTING PRODUCTS WINDSOR, CT., U.S.A. 06095		PL60915				
PART LISTING - SINGLE FACE SIGN ASSEMBLY						
ITEM	PART NUMBER	DESCRIPTION	QUANTITY BY DASH NO.			
			-4	-6	-8	-10-12
22	62089-3	TOP FRAME ASSEMBLY, 8 FOOT	-	-	1	-
22	62089-4	TOP FRAME ASSEMBLY, 10 FOOT	-	-	-	1
22	62089-5	TOP FRAME ASSEMBLY, 12 FOOT	-	-	-	1
23	62082	BRACKET, CORNER, SIGN FRAME	2	2	2	2
24						
25						
26	10037-352	LOCKNUT, 1/2", ALUMINUM	2	2	2	2
27	10037-353	NIPPLE, 1/2" x 2" LG., ALUMINUM	1	1	1	1
28	10047-1170	TERMINAL, FORK, #22-16AWG, #6 STUD	4	4	8	8
29	60149-2	REAR LEG ASSEMBLY	2	2	3	4
29						
30	62102	TETHER INSIDE BRACKET	2	2	3	4
31	61069	HINGE HALF, SHORT PIN	1	1	1	1
32	61068	HINGE HALF, LONG PIN	1	1	1	1
33	61071	HINGE HALF, RECEIVER - SIGN FRAME	2	3	4	5
34	10048-75	RTV, BLACK	A/RA/RA/RA/RA/R			
35	10048-76	RTV, CLEAR	A/RA/RA/RA/RA/R			
36	62101	TETHER OUTSIDE BRACKET	2	2	3	4
37	60984	TETHER, SIGN	2	2	3	4

CROUSE-HINDS AIRPORT LIGHTING PRODUCTS WINDSOR, CT., U.S.A. 06095		PL60915				
PART LISTING - SINGLE FACE SIGN ASSEMBLY						
ITEM	PART NUMBER	DESCRIPTION	QUANTITY BY DASH NO.			
			-4	-6	-8	-10-12
38	61055	FOLDING SIDE HINGE	2	2	2	2
39	61046-2	LAMP BRACKET, 24"	1	-	2	-
39	61046-3	LAMP BRACKET, 36"	-	1	-	2
40	10033-99	POP-RIVET, 3/16" DIA, .126-.250 GRIP, SST	4	4	4	4
41	10047-2391	SOCKET, FLUORESCENT, PLUNGER END	1	1	2	2
42	10047-2392	SOCKET, FLUORESCENT, STATIONARY END	1	1	2	2
43						
44						
45	10047-1222	TY-RAP	A/R	A/R	A/R	A/R
46	10035-55	GASKET	15'	18'	22'	26' 30'
47						
48	10000-397	SCREW, PAN HD W/TORQ PATCH, #6-32x3/8" LG	2	2	2	2
49	10046-81	WIRE, BARE	A/R	A/R	A/R	A/R
50	10C01-050D40	SCREW, HEX HD, 1/2-13 x 1 1/2 LG., SS	2	2	3	4
51						
52	10K16-050D	NUT, SELF LOCKING, 1/2-13, SST	2	2	3	4
53	10A06-013D32	SCREW, PAN HD., #6-32 X 1, SST	2	2	2	2
54	10K01-013D	HEX NUT, #6-32, SST	2	2	2	2
55	10K01-016D	HEX NUT, #8-32, SS	2	2	4	4

CROUSE-HINDS AIRPORT LIGHTING PRODUCTS WINDSOR, CT., U.S.A. 06095		PL60915				
PART LISTING - SINGLE FACE SIGN ASSEMBLY						
ITEM	PART NUMBER	DESCRIPTION	QUANTITY BY DASH NO.			
			-4	-6	-8	-10-12
56	10A10-016D24	SCREW, HEX HD, #8-32 x 3/4" LG	2	2	4	4
57	60997	INSULATOR, LAMP SOCKET	2	2	4	4
58	10000-440	SCREW, SELF TAP, #6x 1/2 LG, TYPE 25	12	16	24	28 32
59	11A12-062D	LOCKWASHER, 5/8, SS	6	6	9	9 12
60	11A12-016D	LOCKWASHER, #8, SS	2	2	4	4 4
61	10033-70	POP-RIVET, 1/8 DIA, .313 - .625 GRIP	3	3	5	5 5
62						
63	10030-120	NYLON WASHER	2	2	2	2 2
64	10000-441	SCREW, THREAD CUTTING, #8 x 1/2, TYPE 25	3	3	6	6 6
65	10A06-016D12	SCREW, PAN HD, #8-32 x 3/8 LG, SS	6	6	6	6 6
66	62090	1" EMT	1	1	1	1 1
67						
68	900008-1	GROMMET, 1"	1	1	1	1 1
69	11A12-025D	LOCKWASHER, 1/4, SS	4	4	4	4 4
70	62087	COVER PLATE, EMT - POWER LEG	1	1	1	1 1
71						
72	62093-4S	NAMEPLATE, IDENTIFICATION, 4 FT.	1	-	-	- -
72	62093-6S	NAMEPLATE, IDENTIFICATION, 6 FT.	-	1	-	- -
72	62093-8S	NAMEPLATE, IDENTIFICATION, 8 FT.	-	-	1	- -

CROUSE-HINDS AIRPORT LIGHTING PRODUCTS WINDSOR, CT., U.S.A. 06095		PL60915				
PART LISTING - SINGLE FACE SIGN ASSEMBLY						
ITEM	PART NUMBER	DESCRIPTION	QUANTITY BY DASH NO.			
			-4	-6	-8	-10-12
72	62093-10S	NAMEPLATE, IDENTIFICATION, 10 FT.	-	-	1	-
72	62093-12S	NAMEPLATE, IDENTIFICATION, 12 FT.	-	-	-	1
73						
74	10037-419	REFLECTOR	4	4	4	4
75	60999	DIFFUSER	-	-	1	1
76	62214	BRACKET - EXTERNAL BALLAST HOUSING	2	2	2	2
77	10K01-025D	NUT, HEX, 1/4-20, SS	4	4	4	4
78	10A06-025D32	SCREW, PAN HD, 1/4-20 x 1" LG	4	4	4	4
79	11A01-025D	WASHER, PLAIN, 1/4	4	4	4	4
80	10046-241-4	WIRE, #16AWG, YELLOW	-	-	A/R	A/R
81	10046-241-3	WIRE, #16AWG, ORANGE	-	-	A/R	A/R
82	10033-89	PDP-RIVET, 1/8 DIA, .126-.187 GRIP	8	12	20	20 24
83						
84	30844	WARNING LABEL	1	1	1	1 1
85	10050-28	INSULATION, FIBERGLASS	A/R	A/R	A/R	A/R
86						
87	61077	PIN TETHER ASSY	-	1	2	2 3
88						
89	61076	HINGE PIN STOP	-	1	2	2 3

CROUSE-HINDS AIRPORT LIGHTING PRODUCTS WINDSOR, CT., U.S.A. 06095		PL60915					
PART LISTING - SINGLE FACE SIGN ASSEMBLY							
ITEM	PART NUMBER	DESCRIPTION	QUANTITY BY DASH NO.				
			-4	-6	-8	-10-12	
90	61070	HINGE HALF, RECEIVER - HOUSING	-	1	2	2	3
91							
92	10033-110	POP-RIVET, 3/16, .376-.500 GRIP	-	1	2	2	3
93	61078-1	GROUND PLANE - SINGLE FACE (24" LAMP)	1	-	2	-	-
93	61078-2	GROUND PLANE - SINGLE FACE (36" LAMP)	-	1	-	2	2
94	10B06-019D32	SCREW, PAN HD, #10-32 x 1" LG	1	1	1	1	1
95	11A01-019D	WASHER, PLAIN, #10 SST	1	1	1	1	1
96	10047-771	TERMINAL, RING, #8 STUD, #22-16 AWG	1	1	1	1	1
97	61084	LABEL - ON/OFF	1	1	1	1	1
98	10047-1714	TERMINAL, RING, #10 STUD, #22-16 AWG	1	1	1	1	1
99	10037-703	VENT PLUG	1	1	1	1	1
100	10047-1434	WIRE NUT (INSIDE BALLAST BOX)	2	2	2	2	2
101							
102	10037-370	BUTTON PLUG	1	1	1	1	1
103	10033-111	POP-RIVET, 1/8" DIA, .251-.375 GRIP, SST	6	6	6	6	6
104	10H27-013D20	SCREW, PAN, 6-32 x 5/8, TYPE F	4	4	4	4	4
105	62107-2	NAMEPLATE - LAMP INFORMATION	1	-	2	-	-
105	62107-3	NAMEPLATE - LAMP INFORMATION	-	1	-	2	2
106	62197	LABEL, SIGNS, FLUORESCENT LAMP MERCURY WARNING	1	1	1	1	1

CROUSE-HINDS AIRPORT LIGHTING PRODUCTS WINDSOR, CT., U.S.A. 06095		PL62055				
PART LISTING - DOUBLE FACE SIGN ASSEMBLY						
ITEM	PART NUMBER	DESCRIPTION	QUANTITY BY DASH NO.			
			-4	-6	-8	-10-12
1	62066-2	HOUSING, DRILLING, DOUBLE, 4 FOOT	1	-	-	-
1	62067-2	HOUSING, DRILLING, DOUBLE, 6 FOOT	-	1	-	-
1	62068-2	HOUSING, DRILLING, DOUBLE, 8 FOOT	-	-	1	-
1	62069-2	HOUSING, DRILLING, DOUBLE, 10 FOOT	-	-	-	1
1	62070-2	HOUSING, DRILLING, DOUBLE, 12 FOOT	-	-	-	1
2	CASIM-P-B-.86	LEAD ASSEMBLY	1	1	1	1
3	50184	COUPLING, FRANGIBLE	1	1	1	1
4	60068	LOUVER	4	4	4	4
5	62100-3	BALLAST ASSEMBLY, SINGLE, 4' SIGN	1	-	-	-
5	62100-5	BALLAST ASSEMBLY, DOUBLE, 3/4" COND	-	1	1	1
5	62100-6	BALLAST ASSEMBLY, SINGLE, W/O SWITCH	-	-	-	1
5	62100-7	BALLAST ASSEMBLY, DOUBLE (3 LAMP)	-	-	-	1
6	10L03-062D	NUT, HEX, SS, #5/8-18	4	4	6	8
7	11A02-062D	WASHER, FLAT, SS, #5/8	8	8	12	16
8	60162	NAMEPLATE, WARNING	1	1	1	1
9						
9	10047-1573	FLUORESCENT LAMP, 36" (COOL WHITE)	1	-	2	3
9	10047-2524	FLUORESCENT LAMP, 36" (SIGN WHITE)	-	2	-	-
10						

CROUSE-HINDS AIRPORT LIGHTING PRODUCTS WINDSOR, CT., U.S.A. 06095		PL62055				
PART LISTING - DOUBLE FACE SIGN ASSEMBLY						
ITEM	PART NUMBER	DESCRIPTION	QUANTITY BY DASH NO.			
			-4	-6	-8	-10-12
10	61057-2	LEG ASSEMBLY, MODIFIED	4	4	6	8
11	100000-0899	CATCH	4	6	12	14
12	100000-0898	STRIKE	4	6	12	14
13	10046-241-2	WIRE, #16AWG, RED	A/RA	RA/RA	RA/RA	RA/R
14	10046-241-6	WIRE, #16AWG, BLUE	A/RA	RA/RA	RA/RA	RA/R
15	10053-166	TY-RAP	1	1	1	1
16	10047-1434	WIRE NUT	2	2	2	2
17	10047-412	P-CLIP	3	4	6	7 12
18	10046-58	WIRE, #16AWG, WHITE	A/RA	RA/RA	RA/RA	RA/R
19	10046-95	WIRE, #16AWG, BLACK	A/RA	RA/RA	RA/RA	RA/R
20	60969-1	BOTTOM FRAME, 4 FOOT	2	-	-	-
20	60969-2	BOTTOM FRAME, 6 FOOT	-	2	-	-
20	60969-3	BOTTOM FRAME, 8 FOOT	-	-	2	-
20	60969-4	BOTTOM FRAME, 10 FOOT	-	-	-	2
20	62086	BOTTOM FRAME, 12 FOOT	-	-	-	2
21	61093-4	PANEL - SIGN FACE, 4 FOOT	2	-	-	-
21	61093-6	PANEL - SIGN FACE, 6 FOOT	-	2	-	-
21	61093-8	PANEL - SIGN FACE, 8 FOOT	-	-	2	-
21	61093-10	PANEL - SIGN FACE, 10 FOOT	-	-	-	2

CROUSE-HINDS AIRPORT LIGHTING PRODUCTS WINDSOR, CT., U.S.A. 06095		PL62055								
PART LISTING - DOUBLE FACE SIGN ASSEMBLY							QUANTITY BY DASH NO.			
ITEM	PART NUMBER	DESCRIPTION	-4	-6	-8	-10	-12			
21	61093-12	PANEL - SIGN FACE, 12 FOOT	-	-	-	-	2			
22	62089-1	TOP FRAME ASSEMBLY, 4 FOOT	2	-	-	-	-			
22	62089-2	TOP FRAME ASSEMBLY, 6 FOOT	-	2	-	-	-			
22	62089-3	TOP FRAME ASSEMBLY, 8 FOOT	-	-	2	-	-			
22	62089-4	TOP FRAME ASSEMBLY, 10 FOOT	-	-	-	-	2			
22	62089-5	TOP FRAME ASSEMBLY, 12 FOOT	-	-	-	-	-	2		
23	62082	BRACKET, CORNER, SIGN FRAME	4	4	4	4	4	4		
24										
25										
26										
27										
28	10047-1170	TERMINAL, FORK, #22-16AWG, #6 STUD	4	8	8	8	8	12		
29										
30	62102	TETHER INSIDE BRACKET	2	2	3	3	4			
31	61069	HINGE HALF, SHORT PIN	2	2	2	2	2			
32	61068	HINGE HALF, LONG PIN	2	2	2	2	2			
33	61071	HINGE HALF, RECEIVER - SIGN FRAME	4	6	8	8	10			
34	10048-75	RTV, BLACK	A/R	A/R	A/R	A/R	A/R	A/R		
35	10048-76	RTV, CLEAR	A/R	A/R	A/R	A/R	A/R	A/R		

CROUSE-HINDS AIRPORT LIGHTING PRODUCTS WINDSOR, CT., U.S.A. 06095		PL62055					
PART LISTING - DOUBLE FACE SIGN ASSEMBLY							
ITEM	PART NUMBER	DESCRIPTION	QUANTITY BY DASH NO.				
			-4	-6	-8	-10-12	
36	62101	TETHER OUTSIDE BRACKET	2	2	3	4	
37	60984	TETHER, SIGN	2	2	3	4	
38	61055	FOLDING SIDE HINGE	4	4	4	4	
39							
39	61047-3	LAMP BRACKET, 36"	1	-	2	2 3	
39	62073	LAMP BRACKET - 2 LAMP	-	1	-	-	
40							
41	10047-2391	SOCKET, FLUORESCENT, PLUNGER END	1	2	2	2 3	
42	10047-2392	SOCKET, FLUORESCENT, STATIONARY END	1	2	2	2 3	
43	10033-99	PDP-RIVET, 3/16" DIA, .126-.250 GRIP, SST	4	4	4	4 8	
44							
45	10047-1222	TY-RAP	A/R	A/R	A/R	A/R	
46	10035-55	GASKET	30'	36'	44'	52' 60'	
47							
48	10000-397	SCREW, PAN HD W/TORQ PATCH, #6-32x3/8" LG	4	4	4	4 4	
49	10046-81	WIRE, BARE	A/R	A/R	A/R	A/R	
50	10C01-050D40	SCREW, HEX HD, 1/2-13 x 1 1/2 LG, SST	2	2	3	3 4	
51							
52	10K16-050D	NUT, SELF LOCKING, 1/2-13, SST	2	2	3	3 4	

CROUSE-HINDS AIRPORT LIGHTING PRODUCTS WINDSOR, CT., U.S.A. 06095		PL62055				
PART LISTING - DOUBLE FACE SIGN ASSEMBLY						
ITEM	PART NUMBER	DESCRIPTION	QUANTITY BY DASH NO.			
			-4	-6	-8	-10-12
53	61049	SUPPORT, LAMP BRACKET	4	-	8	12
53	62074	SUPPORT, LAMP BRACKET - 2 LAMP	-	4	-	-
54	61050	BRACE, LAMP BRACKET	2	-	4	6
54	62075	BRACE, LAMP BRACKET - 2 LAMP	-	4	-	-
55	10K01-016D	HEX NUT, #8-32, SS	2	4	4	6
56	10A10-016D24	SCREW, HEX HD, #8-32 x 3/4" LG	2	4	4	6
57	60997	INSULATOR, LAMP SOCKET	2	4	4	6
58	10000-440	SCREW, SELF TAP, #6x 1/2 LG, TYPE 25	28	36	44	52
59	11A12-062D	LOCKWASHER, 5/8, SS	4	4	6	8
60	11A12-016D	LOCKWASHER, #8, SS	2	4	4	6
61	10033-70	POP-RIVET, 1/8 DIA, .313 - .625 GRIP	5	4	6	9
62						
63	10030-120	NYLON WASHER	4	4	4	4
64	10000-441	SCREW, THREAD CUTTING, #8 x 1/2, TYPE 25	10	10	18	26
65	10A06-016D12	SCREW, PAN HD, #8-32 x 3/8 LG, SS	12	12	12	12
66	62090	1" EMT	1	1	1	1
67	10033-36	POP-RIVET, 1/8 DIA, .294 LONG	16	16	32	48
68	900008-1	GROMMET	1	1	1	1
69	11A12-025D	LOCKWASHER, 1/4, SS	4	4	4	8

CROUSE-HINDS AIRPORT LIGHTING PRODUCTS WINDSOR, CT., U.S.A. 06095		PL62055								
PART LISTING - DOUBLE FACE SIGN ASSEMBLY							QUANTITY BY DASH NO.			
ITEM	PART NUMBER	DESCRIPTION	-4	-6	-8	-10	-12			
70	62087	COVER PLATE, EMT - POWER LEG	1	1	1	1	1			
71	11A12-013D	LOCKWASHER, #6, SS	4	4	4	4	4			
72	62093-4D	NAMEPLATE, IDENTIFICATION, 4 FT.	1	-	-	-	-			
72	62093-6D	NAMEPLATE, IDENTIFICATION, 6 FT.	-	1	-	-	-			
72	62093-8D	NAMEPLATE, IDENTIFICATION, 8 FT.	-	-	1	-	-			
72	62093-10D	NAMEPLATE, IDENTIFICATION, 10 FT.	-	-	-	1	-			
72	62093-12D	NAMEPLATE, IDENTIFICATION, 12 FT.	-	-	-	-	1			
73										
74	10037-419	REFLECTOR	2	2	2	2	2			
75	60999	DIFFUSER	-	-	-	2	-			
76										
76										
76										
76	62215-3	BRACKET - EXTERNAL BALLAST HOUSING	2	2	2	2	4			
77	10K01-025D	NUT, HEX, 1/4-20, SS	4	4	4	4	4			
78	10A06-025D36	SCREW, PAN HD, 1/4-20 x 1" LG	4	4	4	4	8			
79	11A01-025D	WASHER, PLAIN, 1/4	8	8	8	8	8			
80	10046-241-4	WIRE, #16AWG, YELLOW	A/R	A/R	A/R	A/R	A/R			
81	10046-241-3	WIRE, #16AWG, ORANGE	A/R	A/R	A/R	A/R	A/R			
82	10033-89	POP-RIVET, 1/8 DIA, .126-.187 GRIP	24	32	40	40	48			

CROUSE-HINDS AIRPORT LIGHTING PRODUCTS WINDSOR, CT., U.S.A. 06095		PL62055			
PART LISTING - DOUBLE FACE SIGN ASSEMBLY					
ITEM	PART NUMBER	DESCRIPTION	QUANTITY BY DASH NO.		
			-4	-6	-8-10-12
83	10A06-013D32	SCREW, PAN HD, #6-32 x 1" LG	-	-	4 4 4
84	10K01-013D	HEX NUT, #6-32, SST	-	-	4 4 4
85	11A01-013D	WASHER, FLAT, #6 SST	-	-	4 4 4
86	30844	WARNING LABEL	1	1	1 1 1
87	10050-28	INSULATION, FIBERGLASS	A	R/A/R/A/R/A/R	
88					
89	61077	PIN TETHER ASSY	-	2	4 4 6
90					
91	61076	HINGE PIN STOP	-	2	4 4 6
92	61070	HINGE HALF, RECEIVER - HOUSING	-	2	4 4 6
93					
94	10033-110	POP-RIVET, 3/16 DIA, .376-.500 GRIP	-	2	4 4 6
95					
95	62071-2	GROUND PLANE - DOUBLE FACE (36" LAMP)	1	2	2 2 3
96	10047-1714	TERMINAL, RING, #10 STUD, #22-16 AWG	1	1	1 1 1
97	10B06-019D32	SCREW, PAN HD., #10-32 x 1" LG	1	1	1 1 1
98	11A01-019D	WASHER, PLAIN, #10, SST	1	1	1 1 1
99	10047-771	TERMINAL, RING, #8 STUD, #22-16 AWG	1	1	1 1 1
100	10033-37	POP-RIVET, 1/8 DIA, .063-.125 GRIP	2	4	4 4 6

CROUSE-HINDS AIRPORT LIGHTING PRODUCTS WINDSOR, CT., U.S.A. 06096		PL62055			
PART LISTING - DOUBLE FACE SIGN ASSEMBLY					
ITEM	PART NUMBER	DESCRIPTION	QUANTITY BY DASH NO.		
			-4	-6	-8-10-12
101	61084	LABEL - DN/OFF	1	1	1
102					
103	10037-703	VENT PLUG	1	1	2
104	10047-1434	WIRE NUT (INSIDE BALLAST BOX)	2	2	2
105	10037-726	CONDUIT FITTING, STRAIGHT, 3/4"	-	1	2
106	10037-728	CONDUIT, FLEXIBLE LIQUIDTIGHT, 3/4"	A/R	A/R	A/R
107	10037-727	CONDUIT FITTING, 90°, 3/4"	2	1	2
108	10037-705	LOCKNUT, FOR 3/4" CONDUIT, ALUM.	1	1	2
109	10033-111	POP RIVET, 1/8 DIA, .251-.375 GRIP, SS	12	12	12
110	10046-241-11	WIRE, #16 AWG, WHITE/BLACK	-	-	A/R
111	10046-241-1	WIRE, #16 AWG, BROWN	-	-	A/R
112	10046-241-8	WIRE, #16 AWG, GRAY	-	-	A/R
113	62077	STIFFENER - 2 LAMP BRACKET	-	1	-
114	10033-74	POP-RIVET, 1/8" DIA, .251-.312 GRIP	-	6	-
115					
116	10037-370	BUTTON PLUG	2	2	2
117	10H27-013D20	SCREW, PAN, 6-32 x 5/8, TYPE F	4	4	4
118	62107-1	NAMEPLATE - LAMP INFORMATION	1	-	2
118	62107-3	NAMEPLATE - LAMP INFORMATION	-	2	-

7.0 SPARE PARTS LIST

1.	62100-1	Ballast Assy - Single Lamp (45 Turn)
	62100-2	Ballast Assy - Double Lamp (45 Turn)
	62100-3	Ballast Assy - Single Lamp (55 Turn)
	62100-5	Ballast Assy - Double Lamp (55 Turn)
	62100-6	Ballast Assy – Single Lamp (55 Turn)
	62100-7	Ballast Assy – Double Lamp (55 Turn)
	62100-8	Ballast Assy – Double Lamp (55 Turn)
1A.	61106	Ballast contained in Ballast Assy
2	61062	Frangible Coupling
	61066	Frangible Coupling – Modified
3	10047-2391	Socket, Fluorescent - Plunger End
	10047-2392	Socket, Fluorescent – Stationary End
4.	10047-1573	Fluorescent Lamp - (36”) 45W, F36T12/CW/HO
	10047-2523	Fluorescent Lamp - (24”) 35W, F24T12/D/HO
	10047-2524	Fluorescent Lamp - (36”) 45W, F36T12/SGN/HO
5.	60984	Main Tether
6.	61065-3	Lamp Bypass Assembly - Single Lamp
	61065-4	Lamp Bypass Assembly - Double Lamp