

Cooper Industries
Crouse-Hinds Division
Crouse-Hinds Airport Lighting Products
1200 Kennedy Road
Windsor, CT 06095
860 683-4300
Fax 860 683-4354

DOCUMENT 9423
August 10, 2009
Revision L



Title:

INSTRUCTION MANUAL
L-858 DISTANCE MARKER SIGN
858BF SERIES

REV.	DESCRIPTION	LTR.	CHK.	APV
A	Updated Manual to agree with latest manufacturing	A95-251	5/25/95	GFR
B	Updated Manual to show latest tether mounting	A95-304	7/7/95	GFR
C	1)Pg. 6-9, item 64, qty was 8; 2) added item 99.	A97-403		
D	1) Pg. 3-2, Corrected spelling in “configuration”; 2) Pg. 1-3, deleted “color” option, “Options” was numerals.	A96-553	8/11/97	JAS
E	Added Warning Note to Para. 5.1 on lamp disposal	A201-116	4/27/01	GFR
F	Updated Figures 3-2, 4-2, 6-1, & 6-3 to show updated ballast box. Parts List Item 40 was qty 2, Item 64 was qty 8, and added Items 99 & 100.	A202-122	6/26/02	GFR
G	Updated schematic, Figure 5-1 to correct wiring error	A202-191	8/9/02	GFR
H	Updated Parts Lists to add Items 24 & 25	A202-285	12/17/02	GFR
J	Updated Figures 4-1, 6-1, & 6-2 to show latest mfg.; Deleted Item 54 was 61082 Qty 2; Deleted Item 84 was 10000-398 Qty 2; Deleted Item 85 was 11A12-016D Qty 2; Deleted Item 86 was 11A02-016D Qty 2; Deleted Item 87 was 10K01-016D Qty 2	A203-009	1/27/03	GFR
K	Qty of Item 81 on sht 6-10 was 2; Added Item 88	A203-041	2/21/03	GFR
L	Updated Figures 5-3, 6-2 and Parts Listing on sheet 6-8 as follow: P/N 10K01-016D and 10A10-016D24 was 10L01-019D and 10B10-019D20; Added Item 60, 11A12-016D qty 2	A209-064	8/24/09	JRC

LIMITED PRODUCT WARRANTY

THE FOLLOWING WARRANTY IS EXCLUSIVE AND IN LIEU OF ALL OTHER WARRANTIES, WHETHER EXPRESS, IMPLIED OR STATUTORY, INCLUDING, BUT NOT BY WAY OF LIMITATION, ANY WARRANTY OF MERCHANTABILITY OR FITNESS FOR ANY PARTICULAR PURPOSE.

Crouse-Hinds Airport Lighting Products (the “Company”) warrants to each original Buyer of Products manufactured by the Company that such Products are, at the time of delivery to the Buyer, free of material and workmanship defects, provided that no warranty is made with respect to:

- (a) any Product which has been repaired or altered in such a way, in Company's judgment, as to affect the Product adversely;
- (b) any Product which has, in Company's judgment, been subject to negligence, accident or improper storage;
- (c) any Product which has not been operated and maintained in accordance with normal practice and in conformity with recommendations and published specification of Company; and,
- (d) any Products, component parts or accessories manufactured by others but supplied by Company (any claims should be submitted directly to the manufacturer thereof).

Crouse-Hinds Airport Lighting Products' obligation under this warranty is limited to use reasonable efforts to repair or, at its option, replace, during normal business hours at any authorized service facility of Company, any Products which in its judgment proved not to be as warranted within the applicable warranty period. All costs of transportation of Products claimed not to be as warranted and of repaired or replacement Products to or from such service facility shall be borne by Purchaser. Company may require the return of any Product claimed not to be as warranted to one of its facilities as designed by Company, transportation prepaid by Purchaser, to establish a claim under this warranty. The cost of labor for installing a repaired or replacement product shall be borne by Purchaser. Replacement parts provided warranty period of the Products upon which they are installed to the same extent as if such parts were original components thereof. Warranty services provided under the Agreement do not assure uninterrupted operations of Products; Company does not assume any liability for damages caused by any delays involving warranty service. The warranty period for the Products is 24 months from date of shipment or 12 months from date of first use whichever occurs first.

SAFETY NOTICES

This equipment is normally used or connected to circuits that may employ voltages which are dangerous and may be fatal if accidentally contacted by operating or maintenance personnel. Extreme caution should be exercised when working with this equipment. While practical safety precautions have been incorporated in this equipment, the following rules must be strictly observed:

KEEP AWAY FROM LIVE CIRCUITS

Operating and maintenance personnel must at all times observe all safety regulations. **DO NOT PERFORM MAINTENANCE ON INTERNAL COMPONENTS OR RE-LAMP WITH POWER ON.**

RESUSCITATION

Maintenance personnel should familiarize themselves with the technique for resuscitation found in widely published manuals of first aid instructions.

Table of Contents

Title Page.....	i
Revision Page.....	ii
Limited Product Warranty.....	iii
Safety Notices.....	iv
Table of Contents.....	v
1.0 General Information.....	1-1
2.0 Specifications.....	2-1
3.0 Installation.....	3-1
4.0 Maintenance - Mechanical.....	4-1
5.0 Maintenance - Electrical.....	5-1
6.0 Parts Lists.....	6-1
7.0 Spare Parts List.....	7-1

Figures

Figure 3-1	Footprint information.....	3-2
Figure 3-2	Mounting height and tilt adjustment.....	3-3
Figure 3-3	Electrical connection 6.6 amp constant current.....	3-4
Figure 3-4	Lamp Bypass Circuit.....	3-5
Figure 3-5	Mounting detail, Elbow Assembly.....	3-6
Figure 4-1	Hinged Sign Face Assy.....	4-2
Figure 4-2	Mounting leg details.....	4-3
Figure 5-1	Wiring Diagram - 1 Lamp, 55 Turn Ballast.....	5-3
Figure 5-2	Typical lamp socket mounting.....	5-4
Figure 5-3	Electrical Information.....	5-5
Figure 6-1	Typical Distance Marker Assembly.....	6-2
Figure 6-2	Typical Lamp Mounting.....	6-3
Figure 6-3	Typical Lamp Ballast Box.....	6-4
Figure 6-4	Typical Sign Face Assembly.....	6-5

1.0 GENERAL INFORMATION

1.1 General Description

Crouse-Hinds Airport Lighting Products Internally Illuminated Runway Distance Remaining Signs provide outstanding message visibility, day or night. Retroreflective material behind a sturdy polycarbonate surface provides effective recognition when high intensity light impinges upon the sign face. The standard sign face color combination is the White legend on a Black background. Weather resistant, non- metallic housing does not present a target to ground radar sweep. Signs are available as single or double faced.

For further information on Taxiway Signs and their use, consult FAA Advisory Circulars AC 150/5340-18 and AC 150/5345-44 and the Crouse-Hinds Design Handbook of Aviation Lighting.

1.2 Classification of Signs

The signs covered in this manual are designed and manufactured in accordance with the requirements of FAA Advisory Circular AC 150/5345-44.

TYPES

Type L-858B - Runway Distance Remaining signs - white legend on a black background

A sign may consist of multiple arrays of the above messages.

SIZES

Size 4 - 40 inch legend

STYLES

Style 2 - Powered from a series lighting circuit (4.8 to 6.6 Amps)

Style 3 - Powered from a series lighting circuit (2.8 to 6.6 Amps)

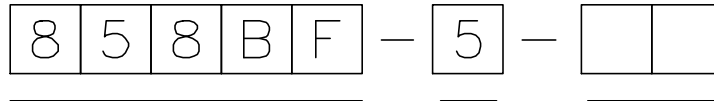
Style 5 - Powered from a series lighting circuit (5.5 Amps)

CLASS

Class 1 - For operation down to -20°C

NOTE: If signs are installed on a dedicated sign only circuit, the calculated VA (volt ampere) load for the circuit should be between 60% to 90% of the rating of the constant current regulator. If this recommendation is not followed, contact Crouse-Hinds Airport Lighting Products Engineering Department for instructions.

1.3 Manufacturing Part Numbers



PART NUMBER: —
858BF (DISTANCE MARKER)

ELECTRICAL PACKAGE: —
3 = 4.8 TO 6.6 AMPS
5 = 2.8 TO 6.6 AMPS
9 = 5.5 AMPS

OPTIONS: —
C/C = ARRESTING CABLE MARKER: 39 INCH YELLOW CIRCLES
* ORDER NUMERALS FOR EACH DMS BY DESCRIPTION

2.0 **SPECIFICATIONS**

Temperature:	Class 1 - -20°C to +55°C
Weather:	All normal outdoor conditions
Wind:	200 MPH continuous
Radio and Navigation Interference:	None
Background Color Discernibility:	Excellent at 800 Feet
Illumination:	Internal

3.0 INSTALLATION

- 3.1 Refer to Figure 3-1 for mounting pad layout.
- 3.2 Remove sign from shipping container.
- 3.3 The more common installation of the sign is with the connections toward the Runway.
- 3.4 Place the mounting flanges over the threaded studs in the mounting pad and securely fasten. Attach tethers to 1/2 inch anchor bolts
- 3.5 Level the Distance Marker Sign to equalize each built in face tilt as shown in Figure 3-2. Adjust the height of the sign so that the height is between 54" and 60".

CAUTION:

Be sure all legs are seated evenly on the mounting surface before tightening floor flange hardware. the sign body must not be bent or deformed due to an uneven installation procedure.

- 3.6 Carefully remove the burlap covering from the sign. Burlap covering may be reused to cover the Sign Face if so desired after installation. This would be to prevent the legend from being seen until its time to.
- 3.7 Make electrical connections as shown in Figure 3-3 for 6.6 Amp Constant Current operation. Adjust jumper on the lamp bypass circuit, P/N 61065-3, for use with either a series or shunt regulator. Lamp Bypass Circuit is located inside the External Ballast Box. See Figure 3-4 for details.
- 3.8 Run an external ground wire to the ground clamp provided on the External Ballast Box. Ground wire shall be of sufficient size and rating per applicable Electrical Codes. External ground wire shall be secured to a grounding electrode per applicable Electrical Codes.

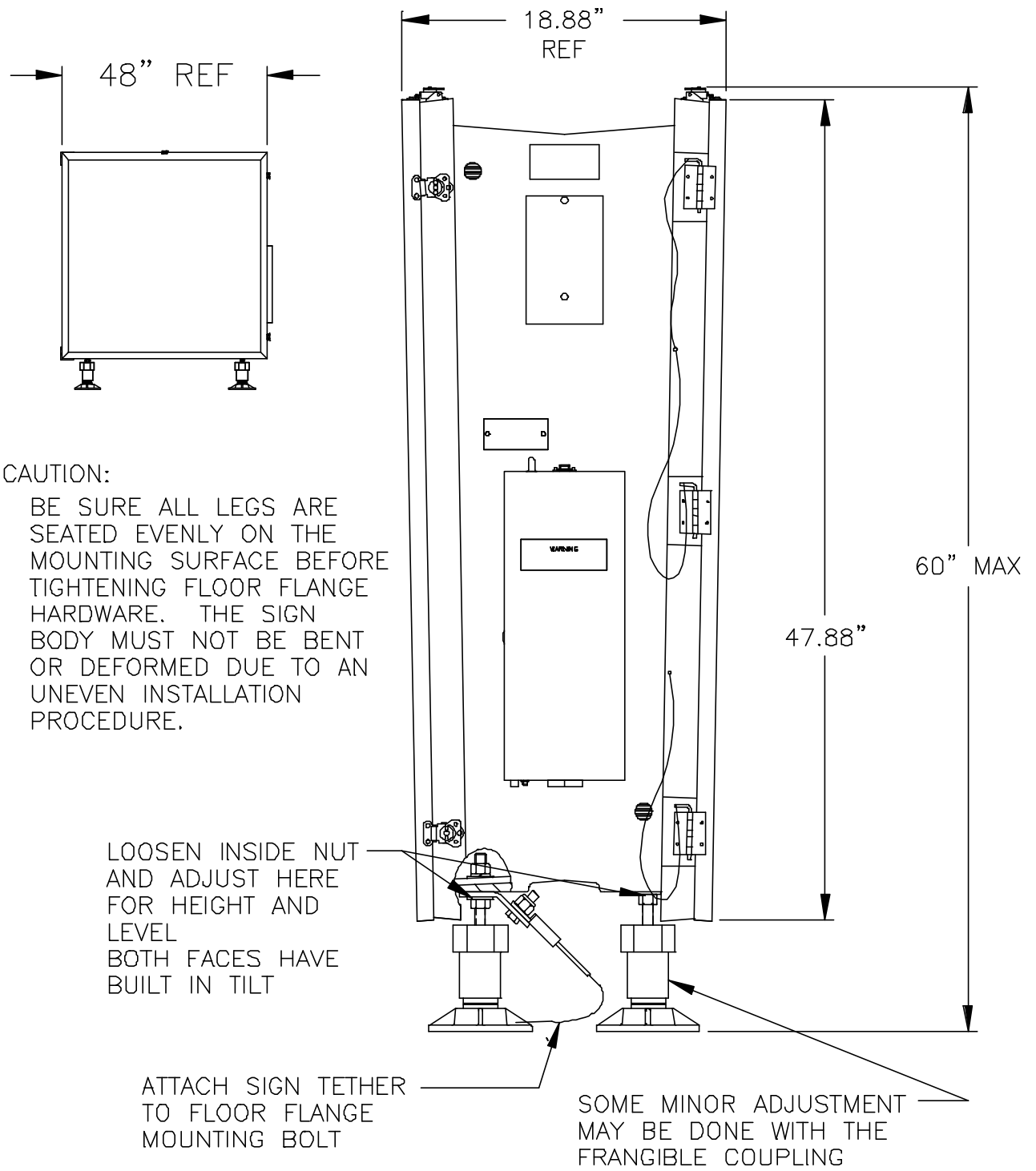
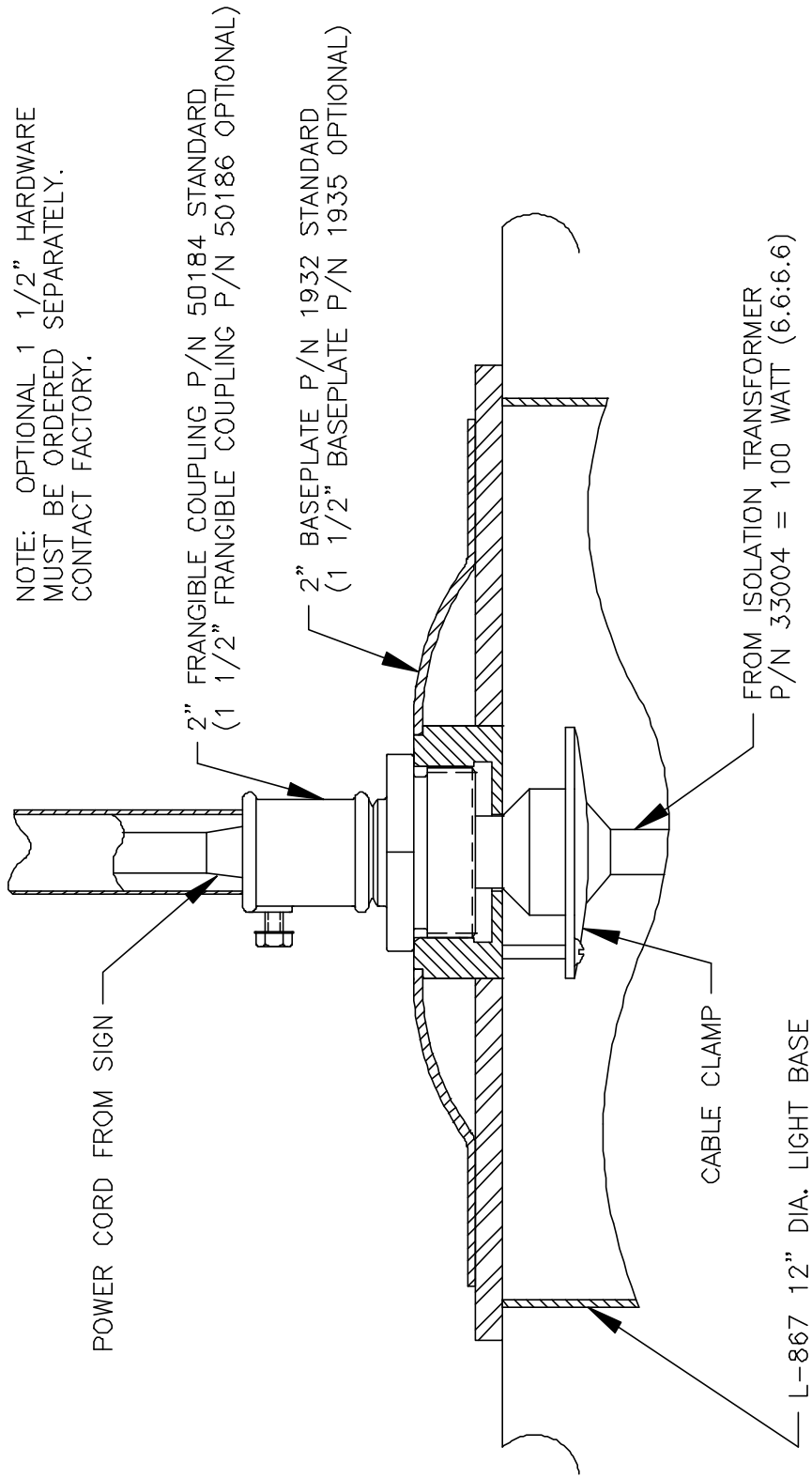


FIGURE 3-2

MOUNTING HEIGHT AND TILT ADJUSTMENT



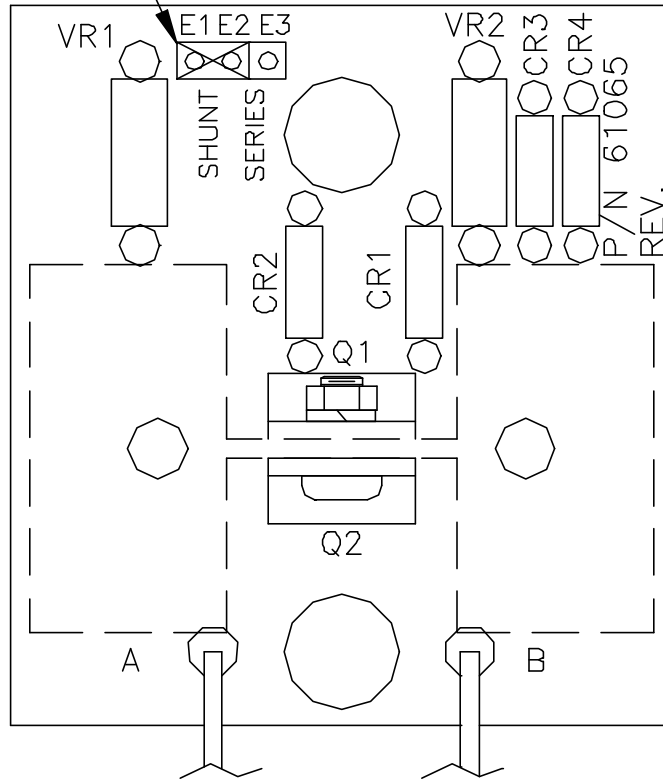
NOTE: LIGHT BASE, BASEPLATE
TRANSFORMER AND CONNECTOR
KITS MUST BE ORDERED
SEPARATELY.

SEE FIGURE 3-5 FOR
ALTERNATE POWER FEED
INSTALLATION

ELECTRICAL CONNECTION
6.6 AMP CONSTANT CURRENT

FIGURE 3-3

JUMPER E1-E2 = SHUNT TYPE REGULATOR
JUMPER E2-E3 = SERIES TYPE REGULATOR

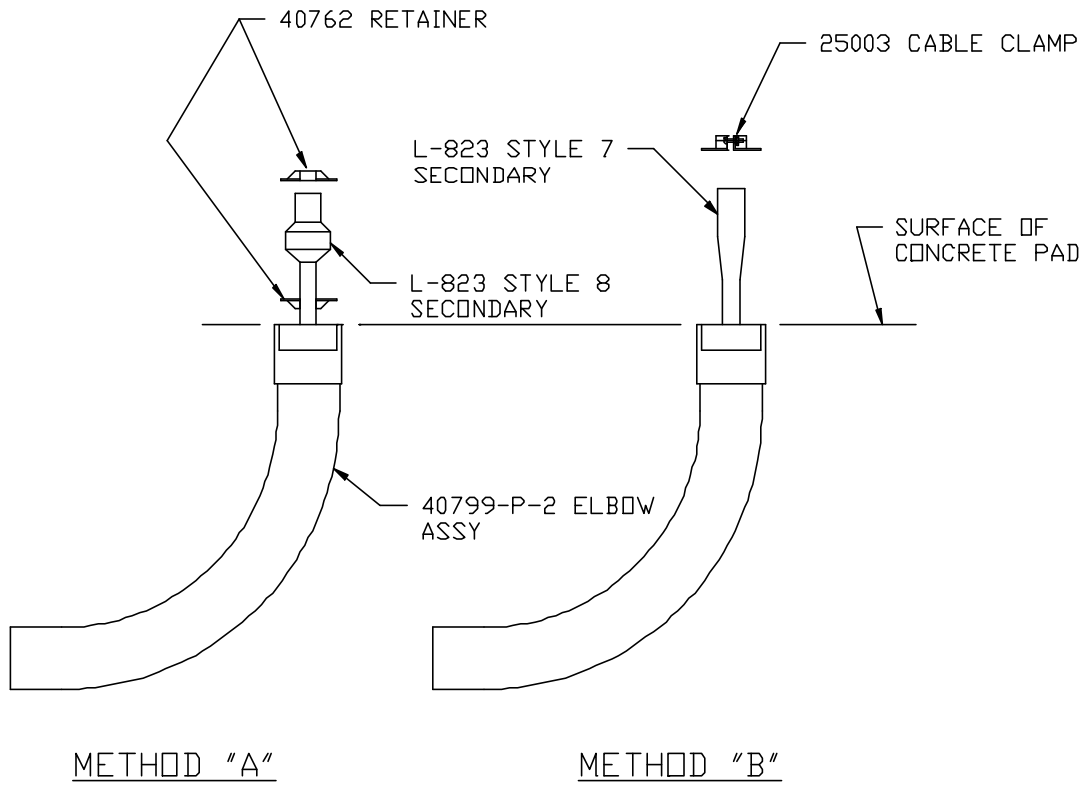


NOTE:
ALL SIGNS ARE SHIPPED WITH THE JUMPER IN THE SHUNT POSITION. IF THE SIGN FAILS TO START, CHECK ON-OFF SWITCH AND LAMPS BEFORE MOVING JUMPER.

FIGURE 3-4

LAMP BYPASS CIRCUIT

NOTE: LOCATED INSIDE BALLAST BOX



MOUNTING DETAIL, ELBOW ASSEMBLY

FIGURE 3-5

4.0 MAINTENANCE - MECHANICAL

Crouse-Hinds Lighting Taxiway Guidance Signs are designed to provide years of trouble-free service. However, if any difficulties do occur, this maintenance section will aid in trouble shooting and repair. Any questions regarding equipment problems should be referred to the Crouse-Hinds Airport Lighting Customer Service Department.

4.1 Preventive Maintenance

4.1.1 Cleaning

The entire sign housing and face(s) may be cleaned using mild soap and water. Use of harsh detergents or chemical cleaning agents may damage the sign surfaces.

DO NOT STEAM CLEAN.

WARNING:

REMOVE POWER BEFORE CLEANING, REMOVING THE COVER(S), OR MAKING ANY REPAIRS. THE BALLAST BOX SWITCH SHOULD ALWAYS BE OFF WHEN WORKING ON THE SIGN.

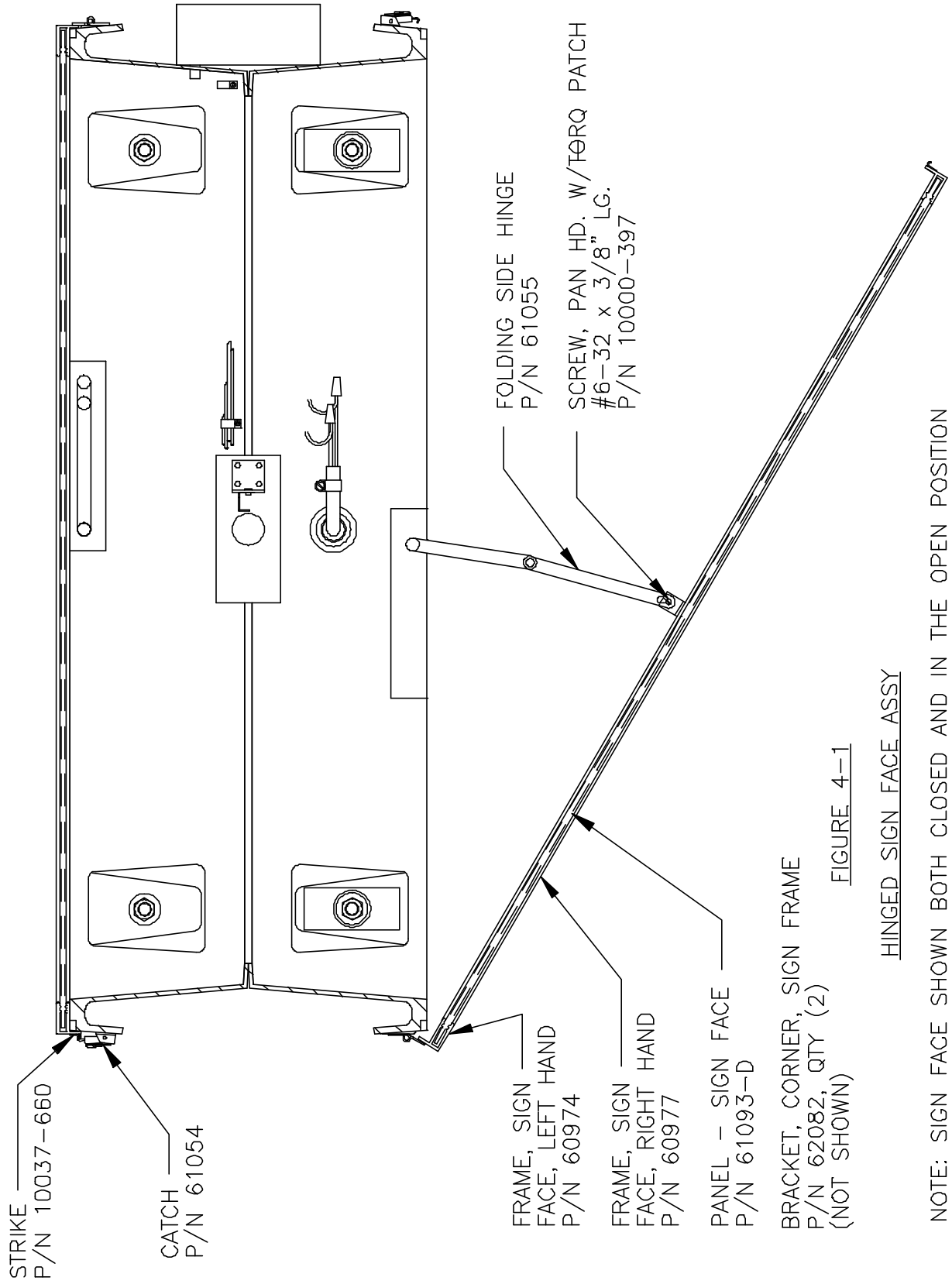
4.1.2 Inspection

The entire sign assembly should be inspected at six month intervals for loose, broken or missing parts, defective seals or worn electrical cables.

4.2 Mechanical Problems

Problems of a mechanical nature are generally limited to the areas of the frangible couplings. The signs are designed to shear off at the frangible couplings before reaching the applied static load.

If the sign housing has been sheared off, unplug from power and determine the extent of damage to the housing. If cracked, the entire sign should be replaced. When it is determined that damage is confined to the leg mounting hardware, all hardware must be examined for straightness and replaced if bent. If brackets are bent, refer to paragraph 4.2.1 to remove sign face assembly and also to re-assemble. Refer to Parts Common List for hardware needed for the particular size sign. Refer to Figures 4-1 and 4-2 for hardware replacement and assembly. Follow paragraph 3.0 and subparagraphs for re-installation.



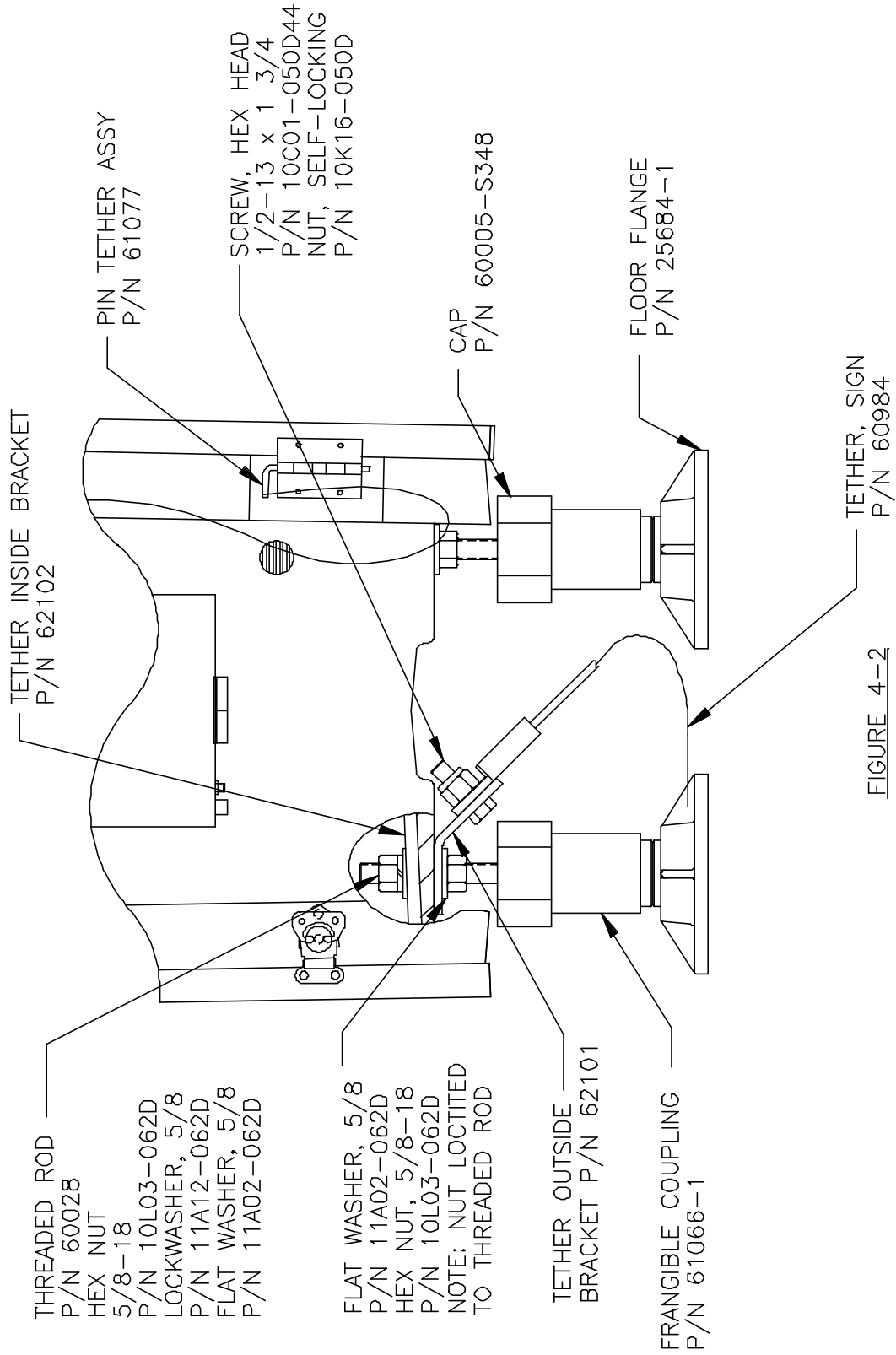


FIGURE 4-2

MOUNTING LEG DETAILS

4.2.1 Sign Face Assembly Removal

Normal repairs would not require the entire Sign Face Assembly to be removed totally from the Sign. If more access is required after Step A, proceed to Step B. If still more access is required, follow Step C.

Note: If steps C is done, it is suggested that two people be used because of the size of the face.

- A. Release and unlatch catches located at the top and side of the sign assembly. Move Sign Face Assembly outward. See Figure 4-1.
- B. Open the Sign Face approximately half way between full open and closed. Push the Folding Side Hinges located top and bottom, outward at the point of attachment to the Sign Face Assy forcing the keyhole slot in the Side Hinge over the #6-32 pan head screw. It may be necessary to back these screws out a turn but do not remove them. Keep a firm grip on the Sign Face Assy so as not to have it hit the ground or swing around causing unnecessary damage.
- C. While holding the Sign Face, open the Face Assy to about 45 degrees and remove the hinge pins. Remove the assembly.

4.2.2 Sign Face Assembly Replacement

To replace the Sign Face, proceed as follows:

- A. The hinges have removable pins. The reason for the removable pins is to facilitate replacement of Sign Faces. If they have not been removed, do so at this time.
- B. Align the hinged side of the Sign Face Assembly and the hinge halves. Slide the hinge pins into place making sure they lock or “click” into place.. The Sign Face Assembly may have to be moved or wiggled slightly to align the hinges to slide the pins in.
- C. Attach the Folding Side Hinges and tighten the #6-32 screw if necessary so that the hinge does not “jump” off the bracket. See Figure 4-1 for details.
- D. Secure all latches.

5.0 MAINTENANCE - ELECTRICAL

5.1 Lamp Replacement

The fluorescent lamp used in the signs has an average rated life of 9,000 hours. Repeated on-off operation will decrease the life expectancy somewhat. When replacement becomes necessary, follow the procedure below.

- A. Be sure power to the sign has been turned off. If it is necessary to relamp without removing regulator power to the sign loop, an ON-OFF toggle switch has been provided on the ballast housing to permit turn-off of the power to the tube sockets. Set this switch to the Off position.
- B. Release and unlatch catches located at the top and side of the sign assembly. Move Sign Face Assembly outward.
- C. Push old lamp toward spring loaded socket end and then out. Carefully remove lamp from sign housing.
- D. Push replacement lamp toward spring loaded socket and then into place.
- E. Close Sign Face Assembly and secure top and side catches. Make sure that the Sign Face catches are secured to prevent water leakage.
- F. Make sure toggle switch on the ballast housing is returned to the ON position for normal sign operation.

WARNING – Fluorescent Lamps contain Mercury (Hg) which must be recycled or disposed of as Hazardous Waste. Do not dispose of in generated Waste Stream.

5.2 Electrical Package

If electrical problems are suspected after replacing the fluorescent tube, proceed as follows.

- A. Remove sign power.

WARNING

Fluorescent ballast's employ a high firing voltage and trouble shooting should be limited to visual inspection and continuity checking **without power applied.**

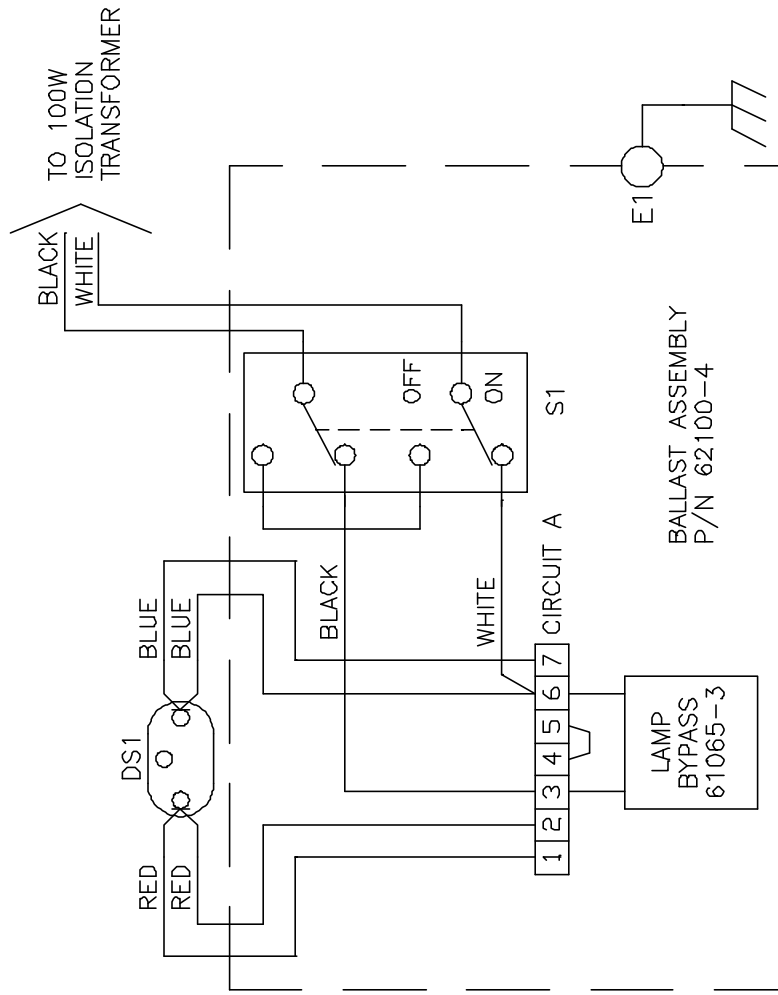
- B. Remove cover from the ballast housing.
- C. Inspect and check lead connections at terminal strip(s).

5.2 Electrical Package (cont.)

- D. Refer to Figures 5-1. Lamp socket continuity can be checked by removing lead from terminal 1 and measuring resistance from this lead to the other lead remaining on terminal 2. Resistance should measure approximately 1 ohm. Repeat the above, disconnecting the lead to terminal 7 and measuring from this lead to terminal 6. If both pair of socket leads indicate continuity, fluorescent tube socket connections are satisfactory. Reconnect leads.
- E. Making certain that the toggle switch on the ballast housing is in the ON position, check for operation.
- F. If sign fails to operate, replace ballast.
- G. Replace ballast cover.

5.3 TROUBLE SHOOTING GUIDE

PROBLEM	PROBABLE CAUSE	SOLUTION
Unit fails to illuminate	<ul style="list-style-type: none"> 1) Defective lamp 2) Defective isolation transformer 3) Defective Ballast 4) Runway Circuit problem 5) ON-OFF relamping switch, S1, in OFF position 6) Bad Connection 7) Lamp Bypass 	<ul style="list-style-type: none"> 1) Replace Lamp 2) Replace transformer 3) Replace Ballast 4) Check runway circuit & regulator for proper operation 5) Switch to ON 6) Check Wiring per Fig. 5-1 7) Check that jumper is correct for the regulator
Unit flickers at turn on (cold temperature) fluorescent lamp	This is normal operation	None required
Unit flickers continuously	<ul style="list-style-type: none"> 1) Defective lamp 2) Defective lamp bypass board 	<ul style="list-style-type: none"> 1) Replace lamp 2) Replace board



WIRING DIAGRAM - 1 LAMP

55 TURN BALLAST

FIGURE 5-1

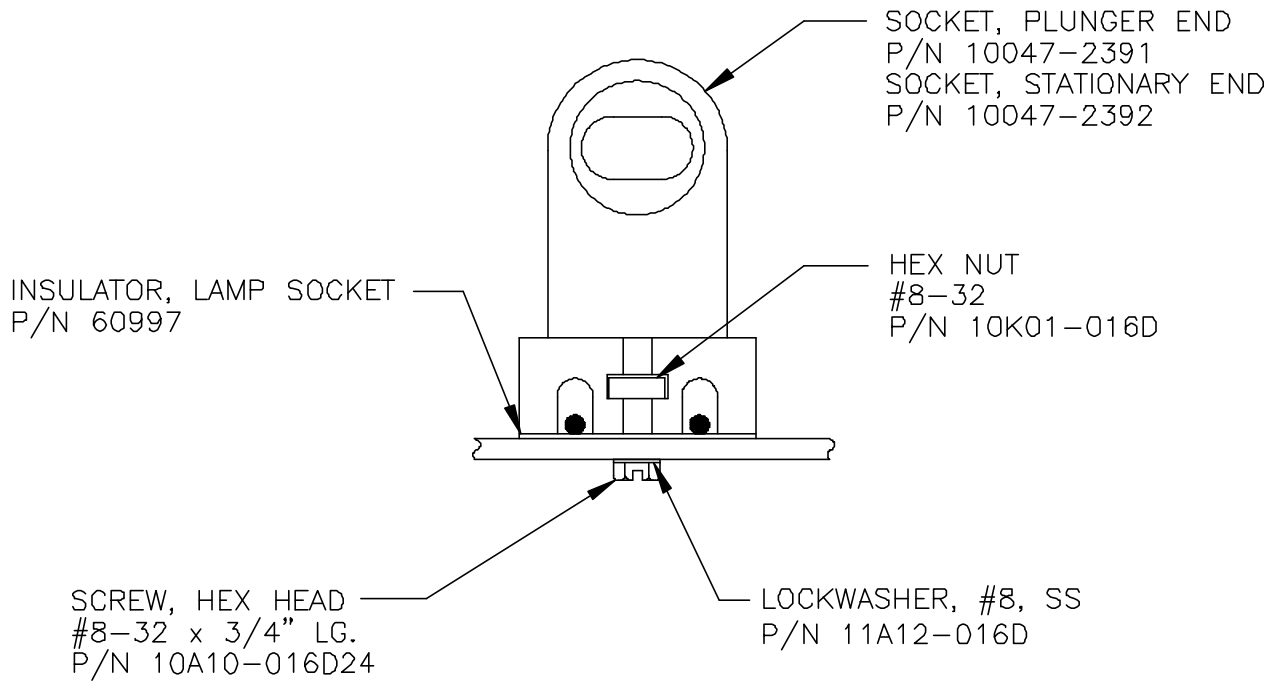


FIGURE 5-2

TYPICAL LAMP SOCKET MOUNTING

PART NO.	NO OF LAMPS	LAMP P/N	FLUORESCENT LAMP	TYPE OF LAMP	LAMP WATTAGE	VA	POWER FACTOR	BALLAST ASSEMBLY	BALLAST PRIMARY TURNS
858BF	1	10047-1573	F36T12/CW/HO		45	79	.87	62100-4	55

PART NO.	NO OF LAMPS	SIZE OF ISOLATION TRANSFORMER
858BF	1	100 WATT (6.6:6.6 - P/N 33004)

FIGURE 5-3
ELECTRICAL INFORMATION

6.0 PARTS LIST

6.1 Distance Marker Sign

PART NO.	DESCRIPTION	DMS
CAS1M-P-B-.86	LEAD ASSY	1
62100-4	BALLAST ASSY - SINGLE LAMP (55 TURN)	1
61106	BALLAST CONTAINED IN BALLAST ASSY	1
60927	SWITCH, SUB-ASSY	1
60028	THREADED ROD	4
60005-S348	CAP	4
10L03-062D	NUT, HEX, 5/8-18	4
11A02-062D	WASHER, 5/8	4
25684-1	FLOOR FLANGE (PART OF LEG ASSY)	4
61066-1	FRANGIBLE COUPLING - MODIFIED	4
61065-3	LAMP BYPASS ASSY - SINGLE LAMP	1
10047-1573	FLUORESCENT LAMP (36") COOL WHITE	1

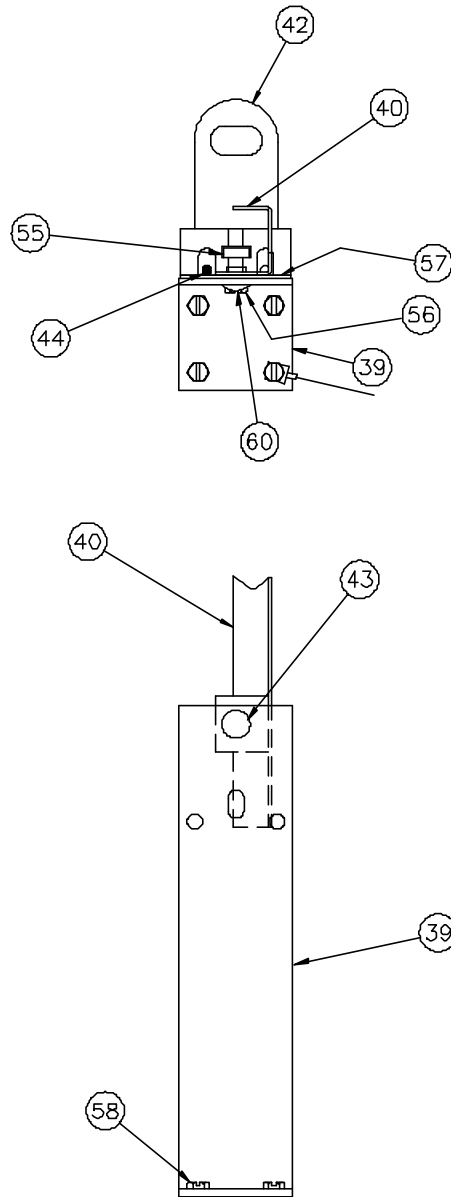


FIGURE 6-2

TYPICAL LAMP MOUNTING

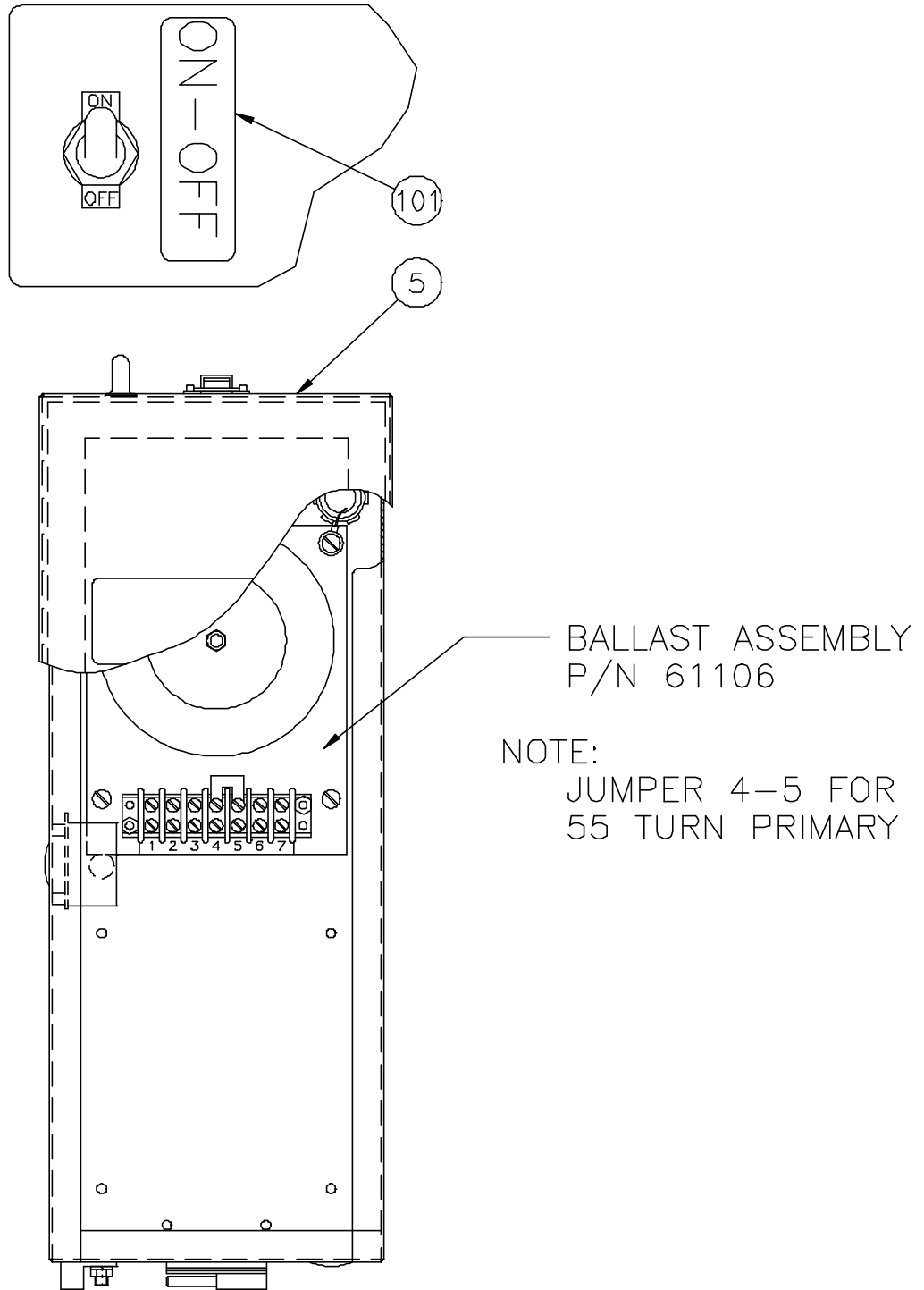


FIGURE 6-3

TYPICAL LAMP BALLAST BOX

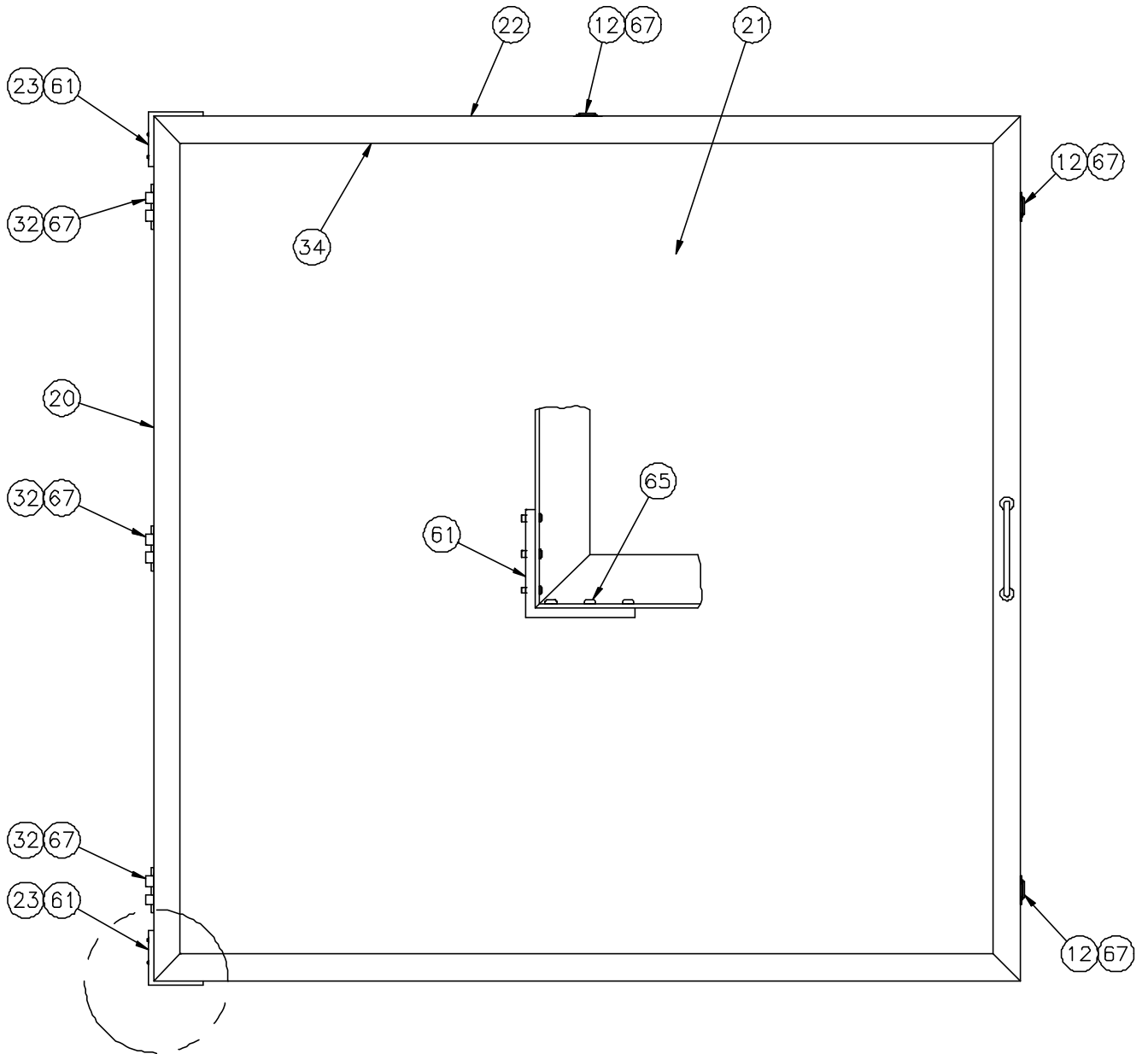


FIGURE 6-4

TYPICAL SIGN FACE ASSEMBLY

CROUSE-HINDS AIRPORT LIGHTING PRODUCTS WINDSOR, CT., U.S.A. 06095		PL858BF		
PART LISTING -- DISTANCE MARKER SIGN ASSEMBLY				
ITEM	QTY	PART NUMBER	DESCRIPTION	REMARKS
1	1	61086-1	HOUSING, DRILLING, DISTANCE MARKER	
2	1	CASIM-P-B-.86	LEAD ASSY	
3				
4	4	60068	LDUVERS	
5	1	62100-4	BALLAST ASSY, EXTERNAL	
6	4	10L03-062D	HEX NUT, 5/8-18, SS	
7	8	11A02-062D	WASHER, 5/8, SS	
8	1	60162	NAMEPLATE, WARNING	
9	1	10047-1573	LAMP, FLUORESCENT 36"	
10	4	61057-3	LEG ASSEMBLY, MODIFIED	
11	6	61054	CATCH	
12	6	10037-660	STRIKE	
13	A/R	10046-241-2	WIRE, #18 AWG, RED	
14	A/R	10046-241-6	WIRE, #18 AWG, BLUE	
15	1	10053-166	TY-RAP, ADJUSTABLE	
16	2	10047-645	WIRE NUT	
17	4	10047-412	P-CLIP	
18	A/R	10046-58	WIRE, #16 AWG, WHITE	
19	A/R	10046-95	WIRE, #16 AWG, BLACK	
20	2	60974	FRAME, SIGN FACE, LEFT HAND	

CROUSE-HINDS AIRPORT LIGHTING PRODUCTS WINDSOR, CT., U.S.A. 06095		PL858BF		
PART LISTING - DISTANCE MARKER SIGN ASSEMBLY				
ITEM	QTY	PART NUMBER	DESCRIPTION	REMARKS
21	2	61093-D	SIGN FACE, DMS	
22	2	60977	FRAME ASSY, RIGHT HAND - SIGN FACE	
23	4	62082	BRACKET, SIGN FRAME CORNER	
24	4	10A06-013D32	SCREW, PAN HD., #6-32 X 1, SST	
25	4	10K01-013D	HEX NUT, #6-32, SST	
26	2	10037-352	LOCKNUT, 1/2" ALUMINUM	
27	1	10037-256	NIPPLE, 1/2" x 1" LG, ALUMINUM	
28	4	10047-1170	TERMINAL, FORK, #22-16 AWG, #6 STUD	
29	1	30844	LABEL, WARNING	
30	6	61077	TETHER ASSY, HINGE PIN	
31	6	61079	HINGE HALF, THREE KNUCKLE	
32	6	61080	HINGE HALF, TWO KNUCKLE	
33				
34	A/R	10048-75	RTV (BLACK)	
35	A/R	10048-76	RTV (CLEAR)	
36				
37	2	60984	TETHER, SIGN	
38	4	61055	FOLDING SIDE HINGE	
39	2	60995	LAMP BRACKET, DISTANCE SIGN	
40	1	61083	GROUND PLANE, DISTANCE MARKER	

CROUSE-HINDS AIRPORT LIGHTING PRODUCTS WINDSOR, CT., U.S.A. 06095		PL858BF		
PART LISTING - DISTANCE MARKER SIGN ASSEMBLY				
ITEM	QTY	PART NUMBER	DESCRIPTION	REMARKS
41	1	10047-2391	SOCKET, FLUORESCENT, PLUNGER END	
42	1	10047-2392	SOCKET, FLUORESCENT, STATIONARY END	
43	2	10033-104	POP RIVET, 3/16 DIA, .126 - .250 GRIP	
44	4	10047-1569	TERMINAL, #6 SPRING LOCK, #16-14 AWG	
45	A/R	10047-1222	TY-RAP	
46	32'	10035-55	GASKET	
47	4	10033-110	POP RIVET, 3/16 DIA, .376 - .500 GRIP	
48	4	10000-397	SCREW, PAN HD W/TORQ PATCH, #6-32 x 3/8 LG, SS	
49	A/R	10046-81	WIRE, BARE	
50				
51	4	11A02-037D	FLAT WASHER, 3/8, SS	
52	8	10K04-037D	HEX NUT, JAM, 3/8-16, SS	
53	2	10A10-037D28	SCREW, HEX HEAD, 3/8-16 x 7/8 LG	
54				
55	2	10K01-016D	HEX NUT, #8-32, SS	
56	2	10A10-016D24	SCREW, HEX HEAD, #8-32 x 3/4 LG, SS	
57	2	60997	INSULATOR, LAMP SOCKET	
58	30	10000-440	SCREW, SELF TAP, #6 x 1/2 LG, TYPE 25	
59	4	11A12-062D	LOCKWASHER, 5/8, SS	
60	2	11A12-016D	LOCKWASHER, #8, SS	

CROUSE-HINDS AIRPORT LIGHTING PRODUCTS WINDSOR, CT., U.S.A. 06095		PL858BF		
PART LISTING - DISTANCE MARKER SIGN ASSEMBLY				
ITEM	QTY	PART NUMBER	DESCRIPTION	REMARKS
61	16	10033-70	POP RIVET, 1/8 DIA, .313 - .625 GRIP	
62	2	10037-419	REFLECTOR, AMBER	
63	4	10030-120	NYLON WASHER	
64	2	10000-441	SCREW, THREAD FORMING, #8 x 1/2 LG, TYPE 25	
65	12	10A06-013D12	SCREW, PAN HD, #6-32 x 3/8 LG, SS	
66				
67	24	10033-89	POP RIVET, 1/8 DIA, .294 LG	
68				
69				
70				
71	2	11A12-013D	LOCKWASHER, #6, SS	
72	1	62093-DM	NAMEPLATE, IDENTIFICATION	
73				
74				
75				
76	A/R	10050-28	INSULATION, FIBERGLASS	
77	1	10B06-019D32	SCREW, PAN HD, #10-32 x 1" LG, SS	
78	1	11A01-019D	WASHER, PLAIN, #10	
79				
80				

CROUSE-HINDS AIRPORT LIGHTING PRODUCTS WINDSOR, CT., U.S.A. 06095		PL858BF		
PART LISTING -- DISTANCE MARKER SIGN ASSEMBLY				
ITEM	QTY	PART NUMBER	DESCRIPTION	REMARKS
81	1	10047-1435	TERMINAL, SPADE, #22-16 AWG, #8 STUD	
82	1	10037-703	VENT PLUG	
83	4	61084	LABEL, ON-OFF	
84				
85				
86				
87				
88	1	10047-1714	TERMINAL, SPADE, #22-16 AWG, #10 STUD	
89	2	10047-1434	WIRE NUT (INSIDE BALLAST BOX)	
90	1	10037-370	BUTTON PLUG	
91	2	11A02-013D	PLAIN WASHER, #6	
92	1	900008-1	GROMMET	
93	1	50184	FRANGIBLE COUPLING	
94	1	62090	1 INCH EMT	
95	2	62101	TETHER OUTSIDE BRACKETS	
96	2	62102	TETHER INSIDE BRACKETS	
97	2	10C01-050D44	SCREW, HEX HEAD, 1/2-13 x 1 3/4" LG, SS	
98	2	10K16-050D	HEX NUT, 1/2-13, SELF LOCKING SS	
99	4	10000-355	SCREW, SLTD. HEX WSH HD., #8X3/4"	
100	1	62197	LABEL, SIGNS, FLUORESCENT LAMP MERCURY WARNING	

7.0 SPARE PARTS LIST

1.	62100-4	Ballast Assy - Single Lamp (55 Turn)
1A.	61106	Ballast contained in Ballast Assy
2.	61066-1	Frangible Coupling - Modified
3	10047-2391	Socket, Fluorescent - Plunger End
	10047-2392	Socket, Fluorescent - Stationary End
4.	10047-1573	Fluorescent Lamp - (36") 45W, F36T12/CW/HO
5.	60984	Main Tether
6.	61065-3	Lamp Bypass Assembly - Single Lamp