

# TRM

## Taxiway Reflective Marker

Compliances:

- FAA AC 150/5345-39: L-853
- NASAO Guidelines



### Applications

TRM tubular retroreflective markers are used to mark the edges of taxiways and ramps at airports and heliports. They are particularly useful for taxiways with centerline lights that do not have edge lights. For all airports, TRM markers provide daytime delineation of the operational areas. Therefore, they are often used to supplement edge lighting systems. All TRM markers feature a white tubular post and a 14" reflective material height.

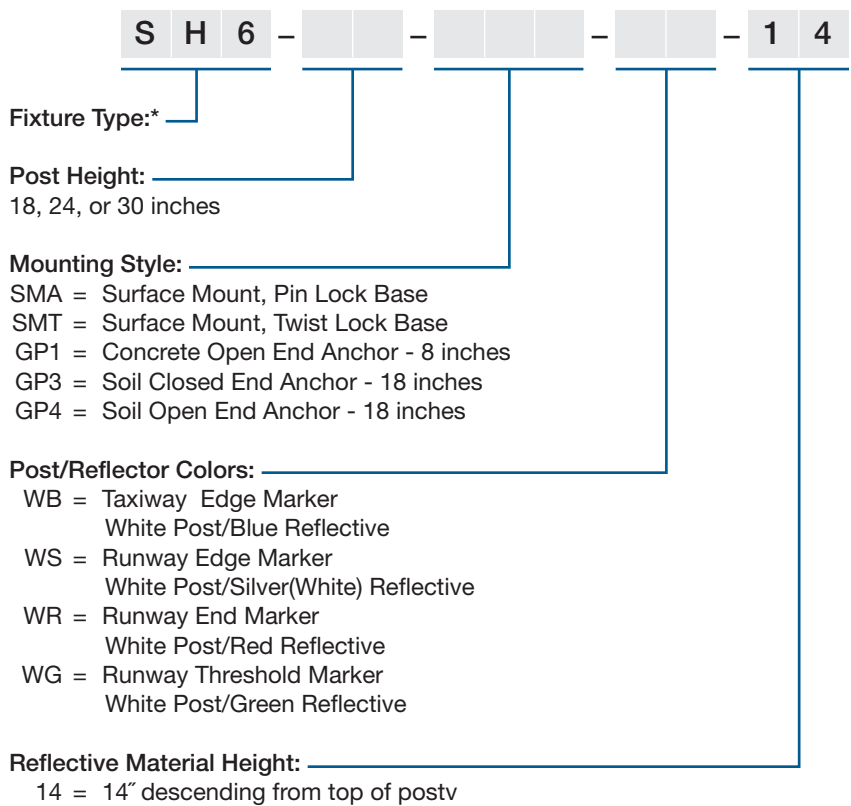
### Features



- FAA approved\*
- Inexpensive - Low initial cost, easy to install, no wiring, requires no power and practically maintenance free.
- Durable - Both the post and the reflectors remain flexible at temperature extremes.
- Highly Visible - Brilliant post colors provide 360 degree daytime visibility, high intensity reflectors provide 360 degree nighttime visibility.
- Safe - No damage to aircraft or vehicles if struck.

### Ordering Information

**How to Order:** Reflective material on post is based on the intended airport location as indicated below. Select post height and mounting style as required.



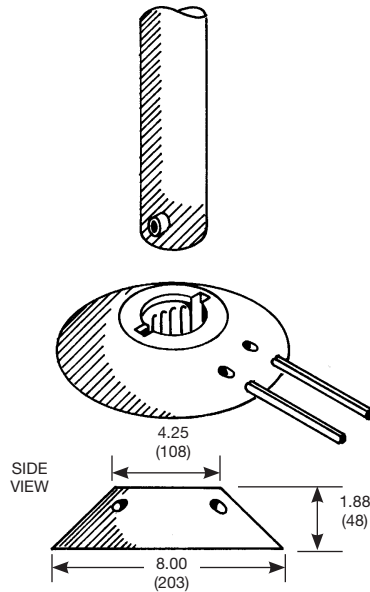
**Post/Reflector Colors:**

- WB = Taxiway Edge Marker  
White Post/Blue Reflective
- WS = Runway Edge Marker  
White Post/Silver(White) Reflective
- WR = Runway End Marker  
White Post/Red Reflective
- WG = Runway Threshold Marker  
White Post/Green Reflective

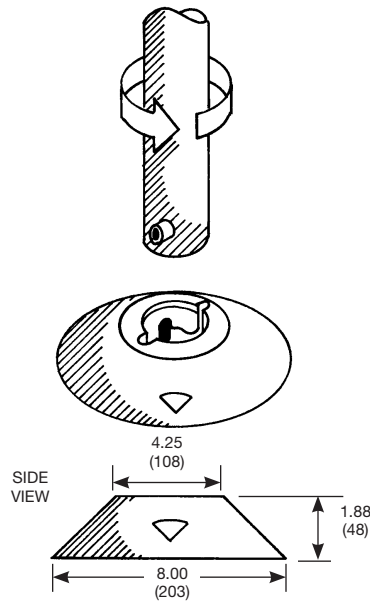
\* TRM Markers are FAA approved by manufacturer Safe-Hit Corporation.

## Installation Drawings

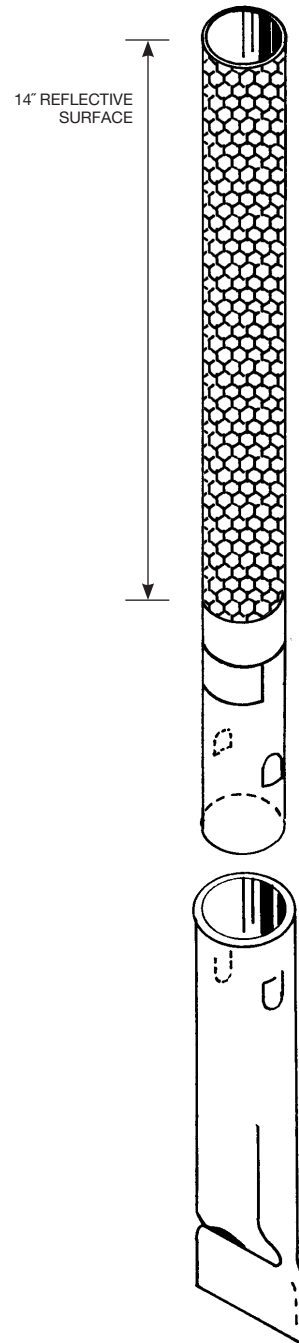
### Surface Mounting Pin Lock Base



### Surface Mounting Twist Lock Base



### Soil Anchor Mounting



## Renewal Parts

Description	Part Number
Concrete Open End Anchor 8 inches	SHA1-08OE-GL
Soil Closed End Anchor 18 inches	SHA3-018C-GL
Soil Open End Anchor 18 inches	SHA4-018E-GL
Surface Mount Pin Lock Base	SHSMA-1-BL
Surface Mount Twist Lock Base	SHSMT-1-BL

Note: For replacement tube only, order complete catalog number from GT-5.4 and add -T at the end.

Dimensions:	inches (mm)
Shipping Weight:	3.0 lbs. 1.4 kg.
Shipping Volume:	0.2 cu.ft. 0.006 cu.m.

