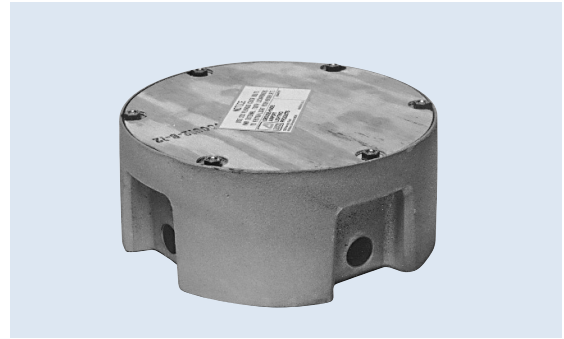


# SIB-D12

## Shallow Inset Light Base

### 12" Ductile Iron



### Applications

The SIB (Shallow Inset Base) is a load-bearing base designed to mount a 12" diameter inset fixture (11.25 dia. BC) into a taxiway or runway pavement location.

### Features

- Ductile Iron Material\* - Crouse-Hinds recommends use with like-metals
- Tapered sides to resist heaving from the pavement
- Open bottom casting cavities which fill with the setting epoxy to eliminate torquing in the pavement
- Outer retaining ring prevents epoxy flowing into the base. Easy light fixture removal.
- Feed-thru entry version with watertight seals
- Secondary plug(s) inside the base for ease of maintenance with feed-thru entry versions
- Includes plywood cover used during installation process and re-usable mounting hardware

\* Recommended for use with Ductile iron fixtures

### Ordering Information

2 0 4 5 3 - [ ] [ ] [ ] / [ ] [ ] [ ] - [ ] [ ] [ ]

Fixture Type: \_\_\_\_\_

Entry Type: \_\_\_\_\_

- 1 = One Feed-thru Entry (2 Conductors), 90° (Side B) Standard Entry Location
- 2 = Two Feed-thru Entry (4 Conductors), 90° (Side B) Standard Entry Location
- F1 = Flexible Rubber Grommets for 1 Inch Conduit, 0° and 180° (Sides A and C) Standard Entry Locations
- H50 = Threaded Hole 1/2-14 NPT, 0° and 180° (Sides A and C) Standard Entry Locations
- H75 = Threaded Hole 3/4-14 NPT, 0° and 180° (Sides A and C) Standard Entry Locations
- H1 = Threaded Hole 1-11 1/2 NPT, 0° and 180° (Sides A and C) Standard Entry Locations
- B2 = Center Bottom Entry Via Flexible Rubber Grommet for 2 Inch Conduit

Entry Locations: \_\_\_\_\_

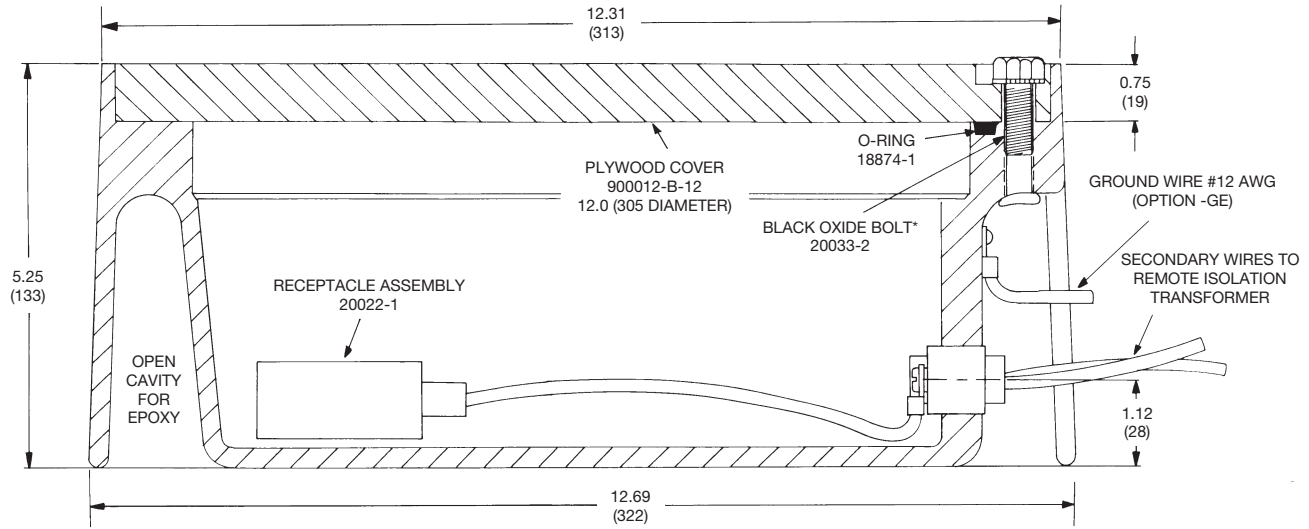
No Symbol means Standard Locations as noted under "Entry Type"

- A = Side A: 0°
- B = Side B: 90°
- C = Side C: 180°
- D = Side D: 270°

Options: \_\_\_\_\_

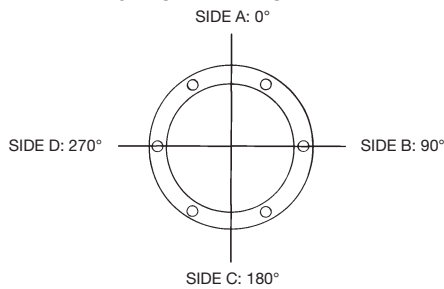
- CR = Corrosion Resistant Coating
- GE = Ground Wire, External
- GI = Ground Wire, Internal

## Dimensional Information



\* Typical for 6 bolts equally spaced on 11.25 (286) diameter bolt circle

## Bolt and Entry Alignment Diagram



Note: The bolt holes on Sides B & D are aligned perpendicular to the runway to taxiway centerline.

Dimensions:	inches (mm)
Shipping Weight:	39.0 lbs. 17.7 kg.
Shipping Volume:	1.0 cu. ft. .028 cu. m.

