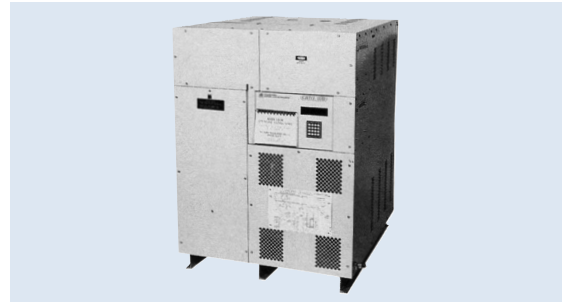


REGD

Constant Current Regulators-Dry

Compliances:

- FAA AC 150/5345-10: L-828 and L-829
- ICAO Aerodrome Design Manual, Part 5
- USN NAVAIR 51-50AAA-2



Large/11-30kW Unit

Applications

The REGD Constant Current Regulator is designed to provide precision control of runway lighting circuits. The equipment can be supplied with a wide range of control and monitoring options.

These regulators are air cooled and designed for indoor service.

Features



- ETL Certified
- Air cooled
- Advanced Diagnostic Aids
- Shunt type ferro-resonant regulator
- Elapsed Time Indicator: each step and total
- Built-in digital ammeter (0.5% accuracy)
- Regulation $\pm 1\%$ over 0 to 100% load and +10% to -5% line voltage with no tap changes
- On-off switching under load
- Lightning and transient protection: input and output lines
- Efficiency — 90% minimum
- High power factor
- Remote reset capability
- Output current maintained with 30% open isolation transformer secondaries
- Open circuit protection
- Over current protection
- Compatibility of Multiple Options
- Soft On/Off
- Integral L-829 Monitoring
- 10,000 feet remote control @ 120V
- Temperature -40°C to $+55^{\circ}\text{C}$
- Plug-in printed circuit boards
- Circuit board compatibility with small dry CCR***

Ordering Information



Fixture Type:
828 = L-828
829 = L-829

Frequency:
50 = 50 Hz
60 = 60 Hz

D = Dry Type: Air Cooled

Kilowatt Rating:
11 = 10 kW 20 = 20 kW
15 = 15 kW 30 = 30 kW

Input Voltage:*

1 = 208	5 = 380	8 = 480
2 = 220	6 = 400	9 = 2400**
3 = 230	7 = 415	
4 = 240		

Output Current:
66 = 6.6A
20 = 20A (10 kw available in 6.6 Amps only)

Output Brightness Steps:
01 = Fixed: Full Brightness at 6.6A
03 = 3 Steps
05 = 5 Steps

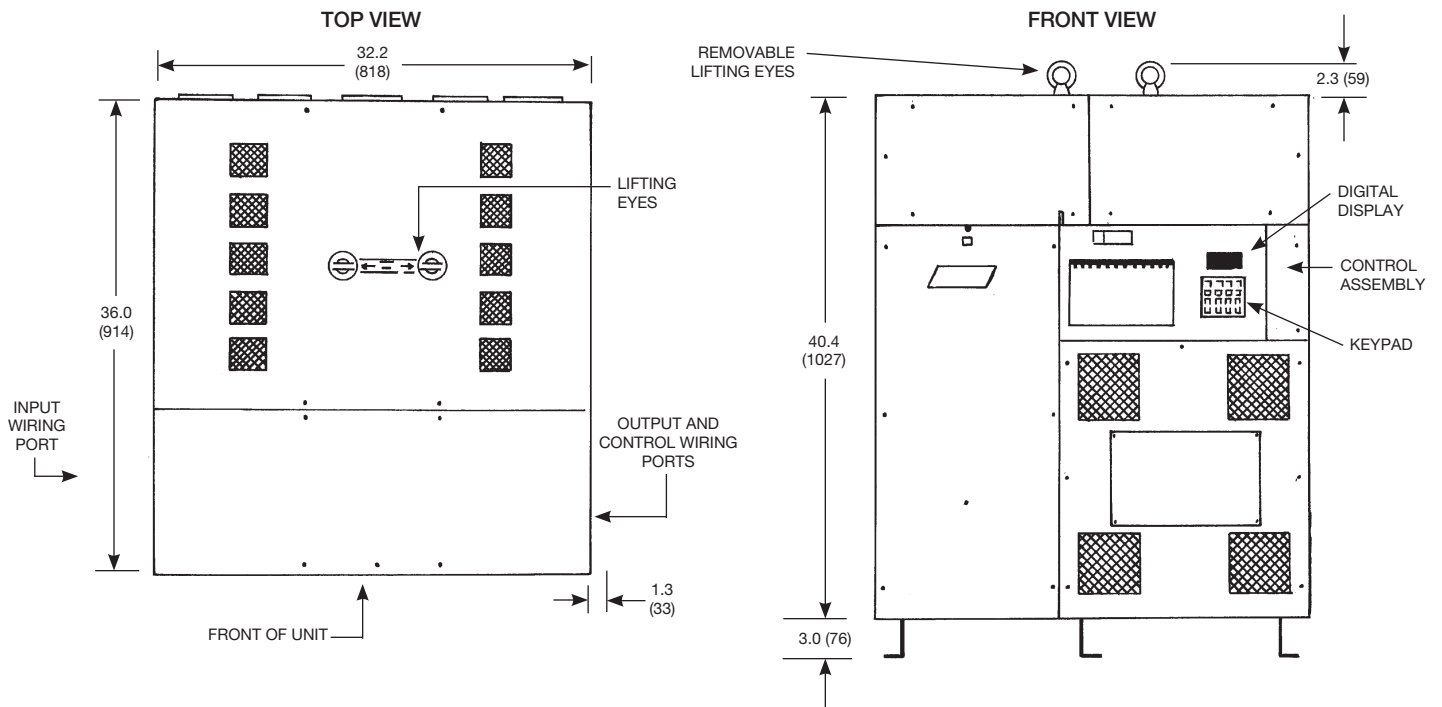
Options: See catalog page 4.18 for a complete list of options.

* Voltage Availability
50 Hz only: 230, 380, 400, 415; 60 Hz only: 480, 2400;
50 or 60 Hz: 208, 220, 240

** Wye system is standard with one-pole breaker. For Delta System see Option 94.

*** Field adjustments may be required.

Outline Drawing



Technical Data

Brightness Step	REGD Output		Percentage (%)		
	Current (Amps)		Light Output		
	3-Step	5-Step	3-Step	5-Step	
5	—	6.6	20.0	—	100
4	—	5.2	15.8	—	20
3	6.6	4.1	12.4	100	4.0
2	5.5	3.4	10.3	30	0.8
1	4.8	2.8	8.5	10	0.2

Note: For 4, 7.5 and 10 kw series type REGD regulators, refer to catalog page 4.3.

Dimensions:	inches (mm)			
Instruction Manual:	9540			
Shipping Weight:	10 KW 800 lbs. 363 kg.	15 KW 880 lbs. 399 kg.	20 KW 1015 lbs. 460 kg.	30 KW 1170 lbs. 531 kg.
Shipping Volume:	84 cu.ft. 2.37 cu.m.			

Renewal Parts

Description	Part Number	Description	Part Number
L-828 Control Assembly	32323-"X"-"Y"	L-829 Control Assembly	32323-"X"-"Y"-61

Insert 1, 3, or 5 in place of "X" for the number of brightness steps required.
 Insert 1 for 6, 6A or 2 for 20A in place of "Y" for the output current required.

Fuse, 1 Amp, Slo-Blo	10047-1205	SCR/Heatsink Assembly, 10-20KW	31505-1
Fuse, 1/8 Amp, Slo-Blo	10047-1005	SCR/Heatsink Assembly, 30KW	31505-2
Fuse, 2 Amp, Slo-Blo	10047-1141		

