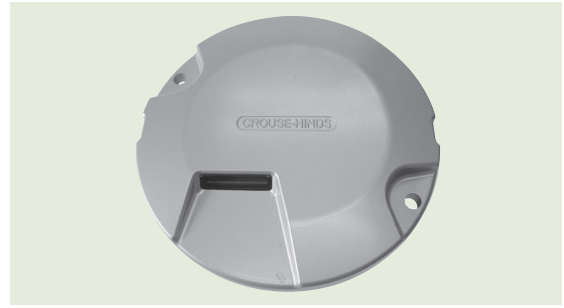


Pro V LED Series

Stopbar-LED, ICAO

Compliances:

- FAA AC 150/5435-46D
- Engineering Brief No. 67c
- ICAO Annex 14
- IEC TS 61827
- NATO: STANAG 3316



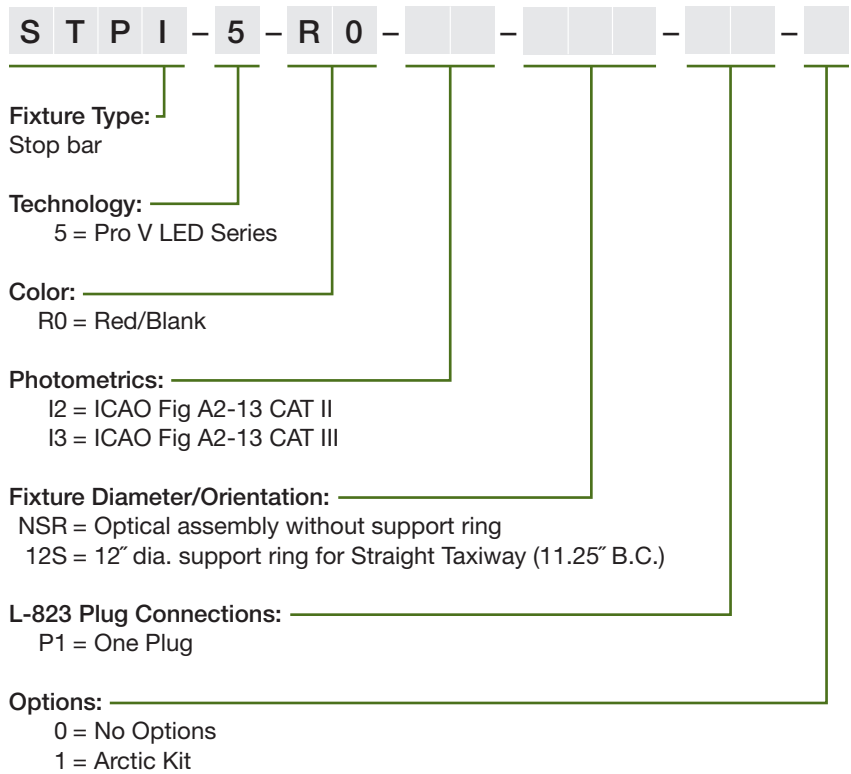
Applications

The STP fixtures are used for runway incursion protection and traffic control on taxiways just before active runways. They are required for SMGCS operations during low visibility conditions as defined in FAA AC 150/5340-30 and AC 120-57A. This unidirectional light is designed for use in all weather conditions with any kind of control system including the Digitrac® Control and Monitoring System. The STP is a red unidirectional light, with a 20W LED module.

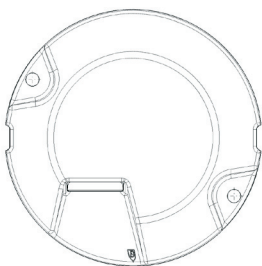
Features

- 8" outer diameter (12" optional)
- 0.25" height above surface
- Depth below flange: 1.38"
- Light prism size 1.57" x 0.24"
- Dust and Water tightness: IP68
- Overall lifetime* up to 20 years
- Useful Lamp life** (LED) > 50,000h
- Nominal Current: 6.6A (0-100%)
- Power consumption (@6,6A): 12W per side
- Power factor >95% at nominal current
- Temperature***: -40°C to +85°C (-40°F to +185°F)
- Internal serial interface for diagnostics and parameterization
- Arctic kit (optional). Additional 14 W while operating
- Integrated single lamp control (optional; contact factory for details)

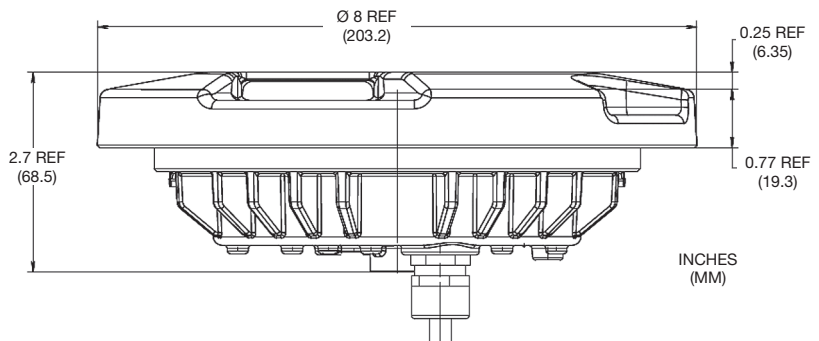
Ordering Information



Outline Drawings

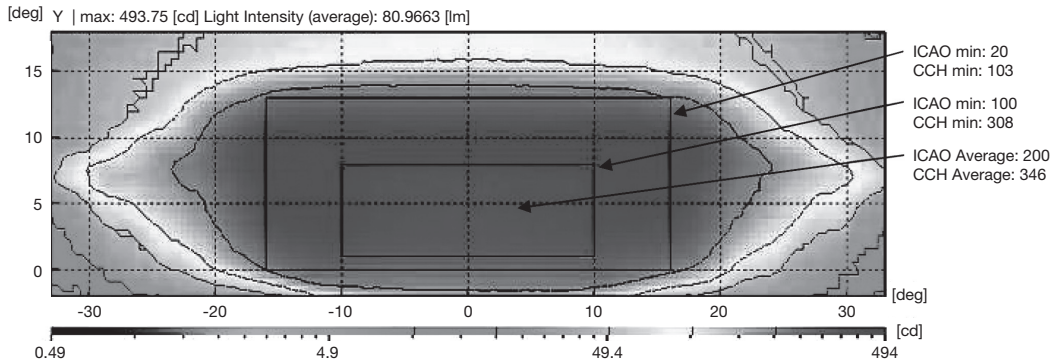


Uni-Direction



* Not including consumable items
 ** Based on 24h cycle: 8h @55°C Air temperature + 1kW/m² solar radiation / 16h@25°C
 *** Measured on cover surface

Typical Photometric Data



Stopbar, Light Distribution ICAO Annex 14, Fig. A2-13

Accessories

Description	Part Number	Description	Part Number
Base: L-868B, Class I, 24" Deep*	AC24242H200303	Isolation Transformer – 15/20 W, 6.6/6.6 A	33365
Bolt Set	22500	Isolation Transformer – 30/45 W, 6.6/6.6 A	33001
Heat Shrink Kit – 1 Piece	10047-2154		

* Two-piece can may be required depending upon the paving technique.

Renewal Parts

Description	Part Number	Description	Part Number
12" Dia. FAA Support Ring Straight (11.25" B.C.)	22504	2 Power Supplies/Fixture Base w/ (1) L-823 Plug	22523
Connector Kit – L-823, 8 AWG, 0.32" to 0.43" O.D.	823KP-D4-D4	2 Power Supplies/Fixture Base w/ (2) L-823 Plugs	22508
Connector Kit for Base	22522	Prism Replacement Kit (includes Prism Gasket)	22502
Gasket, Base Interior	22501	Red Cartridge Taxiway	22511
Power Supply/Fixture Base w/ (1) L-823 Plug	22507		

