



Elevated Approach Light



EAL

(98240-G-300-Unit Shown)

Compliances: FAA Specification FAA-E-982*
ICAO Annex 14
Transport Canada Specification K-302

Applications

The EAL is a unidirectional elevated light which may be used as a clear or red approach light, a red end of runway light, and a green threshold light. For more information, refer to the Application/Fixture Selection Table on page 3.14.

Features

- Meets FAA photometric requirements, using standard PAR 56 lamps, as specified in FAA-E-982 document.
- Suitable for replacement of MB-2 MILSPEC MIL-L-26990 lights per U.S. Air Force AFR 88-14.
- Easy to install - mounts on a standard 2" EMT (50mm pipe) and a frangible coupling or approach mast mounted.
- Sturdy filter clips - resist high winds and jet blasts.
- Cast aluminum housing.
- Easy to relamp - special tools are not required.
- Easy to aim - uses precise aiming device** with digital readout.
- Shipped fully assembled.

Ordering Information

How to Order: To the basic catalog number, add the symbols for Color, Lamp type, Cable Assembly and Options (if any). A frangible coupling may be required for proper mounting and must be ordered separately.

Examples:

98240-C-200 is a clear approach light with a 200 watt lamp, less cable.

98240-G-300-20 is a green threshold light with a 300 watt lamp and 6.5' (2m) long 20 amp cable.



Fixture Type:

Light Color:

- C = Clear (No Filter or Clips)
- R = Red, Absorption Filter with Clips
- G = Green, Absorption Filter with Clips
- DR = Red, Dichroic Filter with Clips
- DG = Green, Dichroic Filter with Clips

Lamp Type:

- 200 = 200 Watts, 6.6 Amp, PAR-56
- 300 = 300 Watts, 20 Amp, PAR-56
- No symbol means no lamp is included

Cable Assembly:

- 66 = 6.5 Feet (2 meters) Long Cable, 6.6 Amp Rated with L-823 Plug
- 20 = 6.5 Feet (2 meters) Long Cable, 20 Amp Rated, with L-823 Plug
- No symbol means a cable is not included

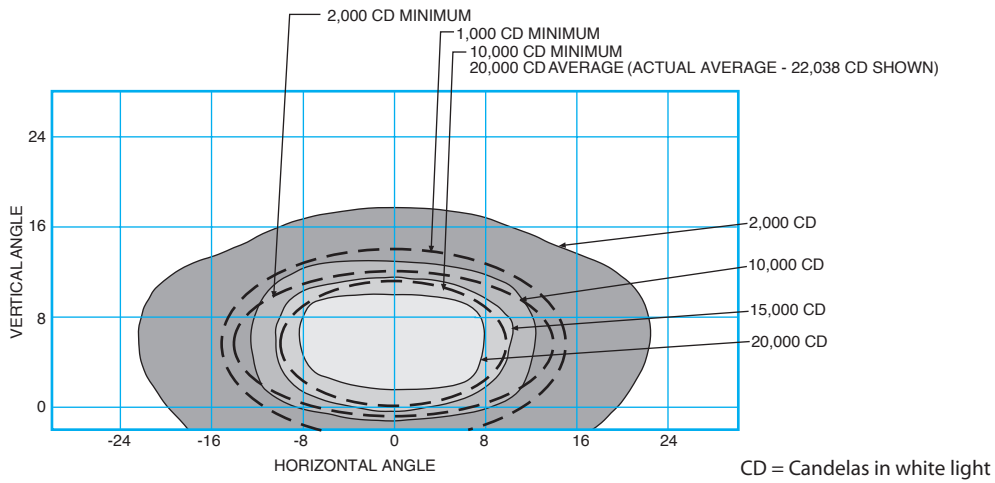
Options:

- 10 = Mounting Kit (consist of 61062-1 Frangible Coupling and 25003 Cable Clamp Assembly).
- 11 = Ground Wire

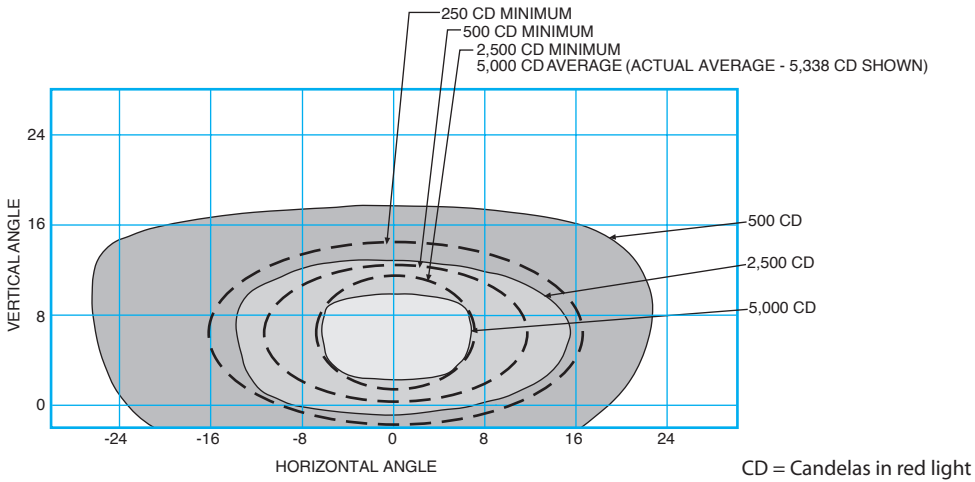
* With Exception of the Weight.

** Order 50133 aiming device separately (one per facility).

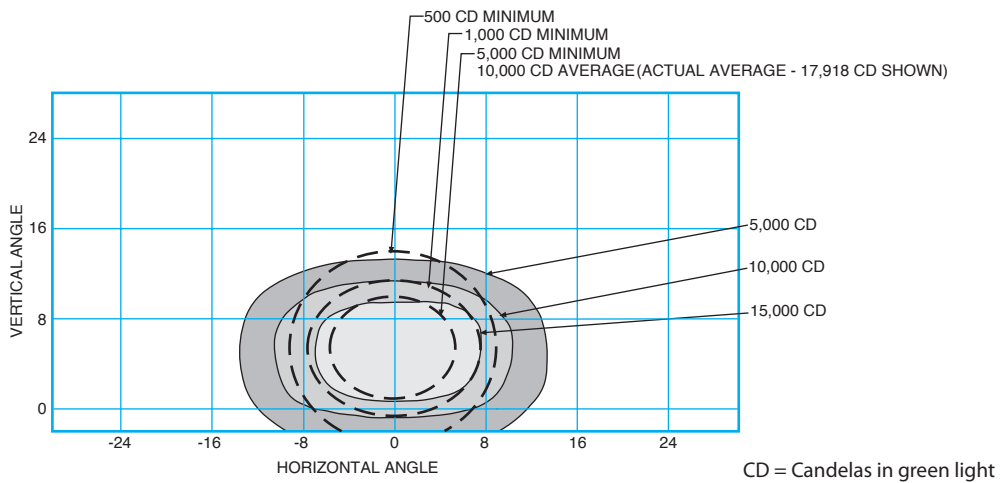
Photometric Data



APPROACH CENTERLINE & CROSS BAR WHITE LIGHT - 200 WATTS
(ICAO FIGURE 2.1)

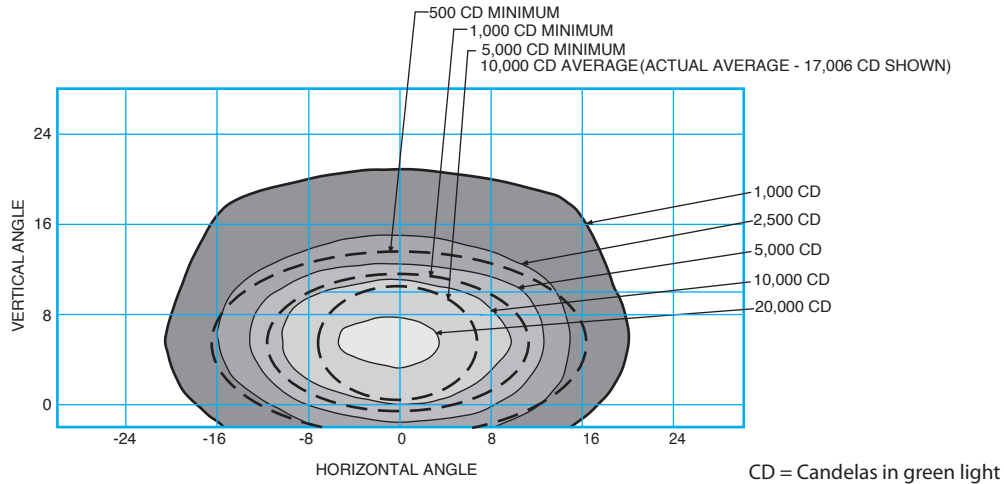


APPROACH SIDE ROW RED LIGHT - 200 WATTS
(ICAO FIGURE 2.2)

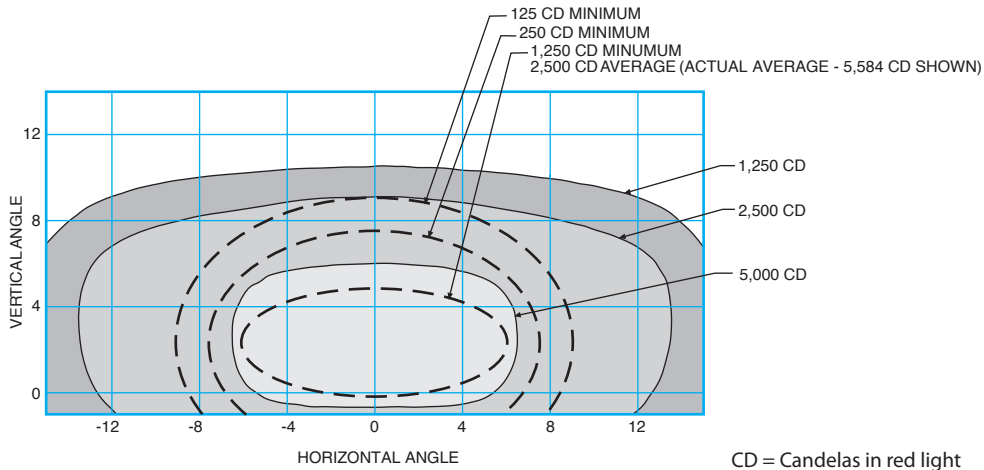


THRESHOLD GREEN LIGHT - 200 WATTS
(ICAO FIGURE 2.3)





THRESHOLD WING BAR GREEN LIGHT - 200 WATTS
(ICAO FIGURE 2.4)



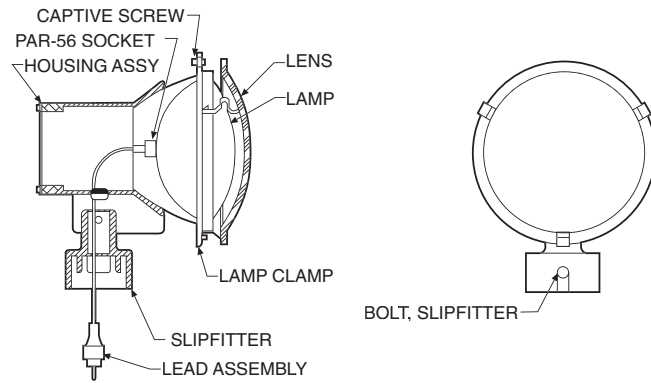
RUNWAY END RED LIGHT - 200 WATTS
(ICAO FIGURE 2-8)

APPLICATION/FIXTURE SELECTION TABLE

Application	Compliances	Catalog Number
White, Approach Centerline and Cross Bar Light	ICAO, USAF/NAVY, NATO, FAA	98240-C-200-66 98240-C-300-20
Red, Approach Side Row Light	ICAO, USAF/NAVY, NATO, FAA	98240-DR-200-66
Green, Runway Threshold and Wing Bar Light	ICAO, USAF/NAVY, NATO, FAA	98240-DG-200-66
Red, Runway End Light	ICAO, USAF/NAVY, NATO, FAA	98240-R-200-66

Outline Drawing

Instruction Manual: 9701



Accessories

Part Number	Description	Shipping Weight		Shipping Volume	
		Lbs.	Kg.	Cu.Ft.	Cu.M.
61062-1	Breakable Coupling with Compression Fitting	1	0.5	0.03	0.001
AP1932	Baseplate, 2" Hub, 12" Diameter	8	3.6	0.14	0.004
AP2932	Baseplate, 2" Hub, 16" Diameter	14	6.4	0.14	0.004
AC21242H200301	Base L-867B, Class I, 24" Deep	52	23.6	2.6	0.074
AC63242H200301	Base L-867D, Class I, 24" Deep	87	30.4	4.3	0.122
33006	Transformer L-830-6, 200 watts 6.6/6.6A	8.9	4.04	0.3	0.009
33007	Transformer L-830-7, 200 watts 20/6.6A	8.9	4.04	0.3	0.009
33008	Transformer L-830-8, 300 watts 6.6/20A	15.0	6.8	0.7	0.019
33009	Transformer L-830-9, 300 watts 20/20A	17.2	7.8	0.7	0.019
823KP-D4-D4	Connector Kit L-823, 8 AWG, .32" to .43" O.D.				
823KP-D3-D3	Connector Kit L-823, 6 AWG, .32" to .43" O.D.				
10047-2154	Heat Shrink Kit (1-piece)				
10047-1425	Heat Shrink Kit (2-piece)				
50133	Aiming Device				

Renewal Parts

Part Number	Description	Part Number	Description
50115-1	Housing Assembly	50135	Lead Assy., 20A, 6.5' (2m) Long
42381-1	Lamp Clamp (without Filter)	50252	PAR-56 Socket
42381-3	Lamp Clamp (with Filter)	10037-754	#6-32 Captive Screw
ML4265	Lens, Absorption Red	40941	Lamp, PAR-56, 200 watts, 6.6A
ML4266	Lens, Absorption Green	10047-684	Lamp, PAR-56, 300 watts, 20A
41360-R*	Lens, Dichroic Red	10A10-025D32	Bolt, Slipfitter
41360-G*	Lens, Dichroic Green		
50106	Slipfitter (Less Bolts)		
50136	Lead Assy., 6.6A, 6.5' (2m) Long		

* Should be used with 200W fixtures.

Shipping Weights and Volumes

Catalog Number	Shipping Weight		Shipping Volume	
	Lbs.	Kg.	Cu.Ft.	Cu.M.
98240-C-200 (or 300)-66 (or 20)	5.5	2.5	0.70	0.020
98240-R (or G)-200 (or 300)-66 (or 20)	7.0	3.2	0.70	0.020

