

AGS-2

Airside™ Guidance Signs Y,R,L,B

Compliances:

- FAA AC 150/5345-44: L-858
- Unified Facilities Criteria UFC 3-535-01



Applications

Airside™ signs Model AGS are designed for use on airport taxiways to mark taxi routes and intersections. Colors may be black on yellow, yellow on black, or white on red depending on the application as defined by the governing standard FAA AC 150/5340-18. Black signs with white numerals are used to indicate distance remaining in thousands of feet of runway.

Features

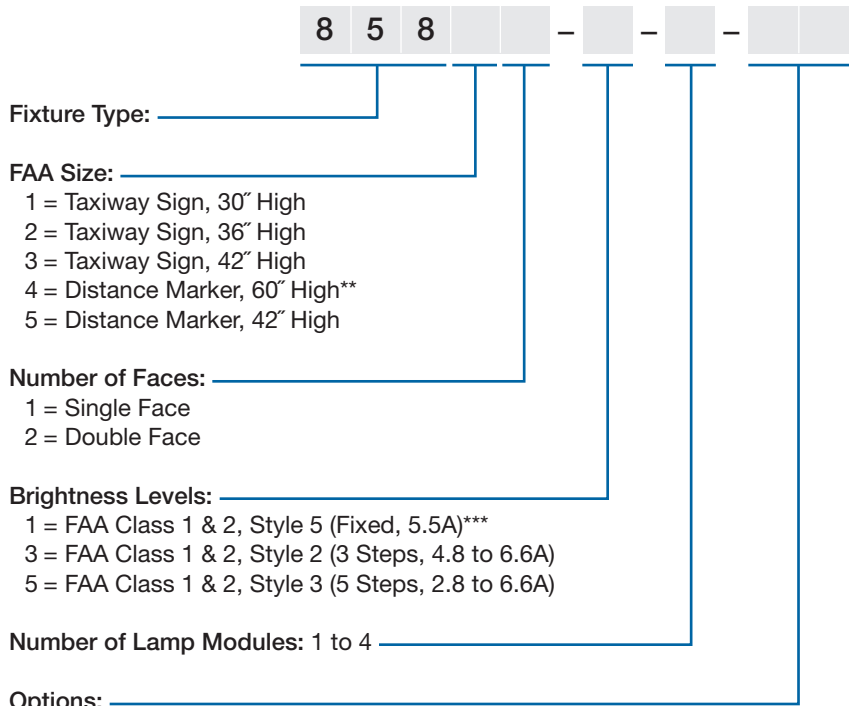


- ETL Certified
- 62W Lamp
- Specification grade electrical system
- Power factor greater than 0.95 across all brightness steps
- Self-adjusting circuit board and internal transformer automatically maintains illumination level and uniformity across all steps (common for 3 or 5 step)
- Relamp without removing sign cover
- Modular design with uniform leg spacing
- One lamp per module
- Only one internal transformer per sign
- Slip-in sign faces without sealants
- Frangible couplings may be pre-installed on pad and sign lowered onto them for easy installation
- Available with fixed brightness (5.5A) for use on dedicated sign circuits
- Enclosed power entry through sign leg
- Enclosed power entry through flexible liquidtight conduit (Option 11)
- External on/off switch breaks all electrical connections to the sign for safe maintenance (Option 12)
- Stainless steel tethers, two per sign except for one for single module. Single module additional tether available (option 20).
- High strength aluminum extrusion housing

Ordering Information

How to Order: To determine the number of modules to fit your message, contact Crouse-Hinds. For estimating purposes, use two characters per module. Do not count a 1 as a character except when the message contains an M or W. Maximum of four (4) modules per sign to comply with the FAA specification.*

Order isolation transformer, transformer housing, coverplate and gasket or baseplate, and connector kit separately. The colors of the sign faces and the legends must be specified for each sign. Multiple messages and colors may appear on a sign face.



* 4 Module size 2 exceeds specifications by 0.6 inches.
 ** Size 4 Distance Marker provides 2 lamp modules—transformer to be sized accordingly.
 *** Use 33101, 33102 or 33103 isolation transformers only. Resistive load only. Use step 2 of a 3-step regulator.
 **** Not FAA compliant.
 † Not recognized by FAA.

Technical Data

Airside™ Guidance Signs (AGS) Measured Load (VA) & Power Factor (PF)

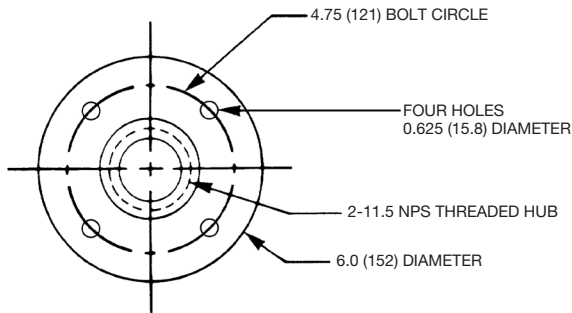
Lamp Modules	Isolation Transformer	CCR	VA*	PF (min)
1	100W	5-Step	100	0.95
	100W	3-Step	100	0.95
2**	200W	5-Step	160	0.95
	200W	3-Step	160	0.95
3	300W	5-Step	230	0.95
	300W	3-Step	230	0.95
4	300W*	5-Step	290	0.95
	300W*	3-Step	290	0.95

* Applies to all FAA sizes, single and double face. Measured wattage exceeds the total of the lamp wattages due to the power consumption of the sign's internal electrical system, and isolation transformer.

** Includes FAA Size 4 distance marker sign.

Dimensional Information

Floor Flange 25684-1



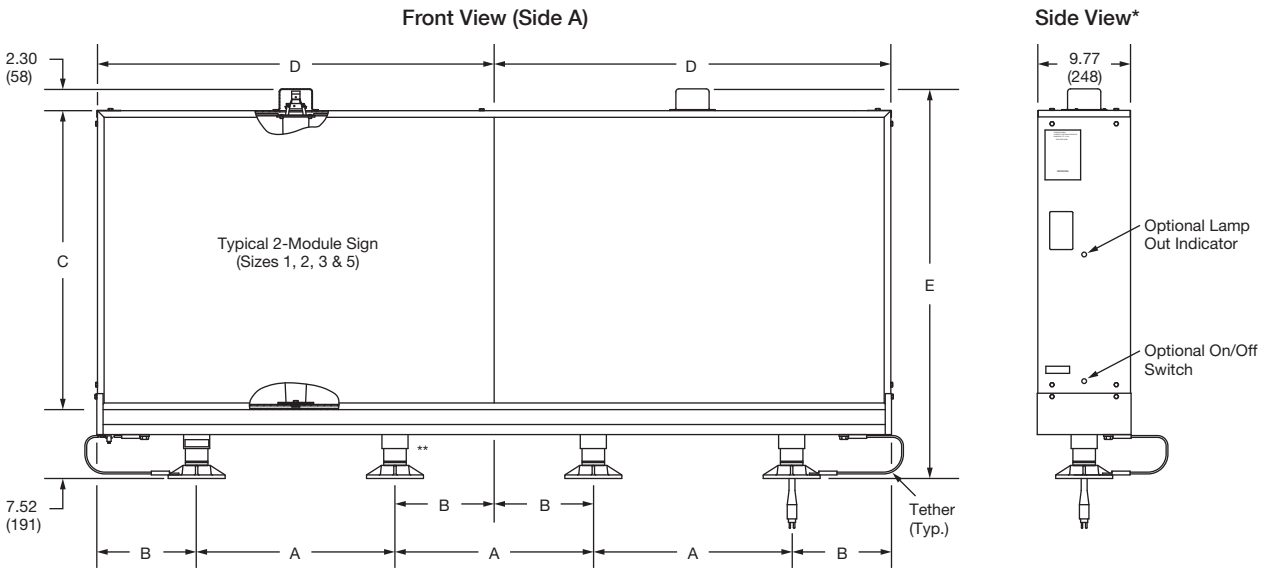
Dimensions:

inches
(mm)

Shipping Weights and Volumes

		Modules							
		1		2		3		4	
		lbs. (kg.)	cu.ft. (cu.m.)	lbs. (kg.)	cu.ft. (cu.m.)	lbs. (kg.)	cu.ft. (cu.m.)	lbs. (kg.)	cu.ft. (cu.m.)
Size	1	65 (29.5)	5.7 (0.16)	130 (59.0)	11.4 (0.32)	195 (88.5)	17.1 (0.48)	260 (118)	22.8 (0.65)
	2	90 (40.8)	8.5 (0.24)	180 (81.6)	17.0 (0.48)	270 (122.5)	25.5 (0.72)	360 (163.3)	34.0 (0.96)
	3 & 5	115 (52.2)	11.3 (0.32)	230 (104.3)	22.6 (0.64)	345 (156.5)	34.0 (0.96)	460 (208.7)	45.3 (1.28)
	4	—	—	145 (65.8)	26.5 (0.75)	—	—	—	—

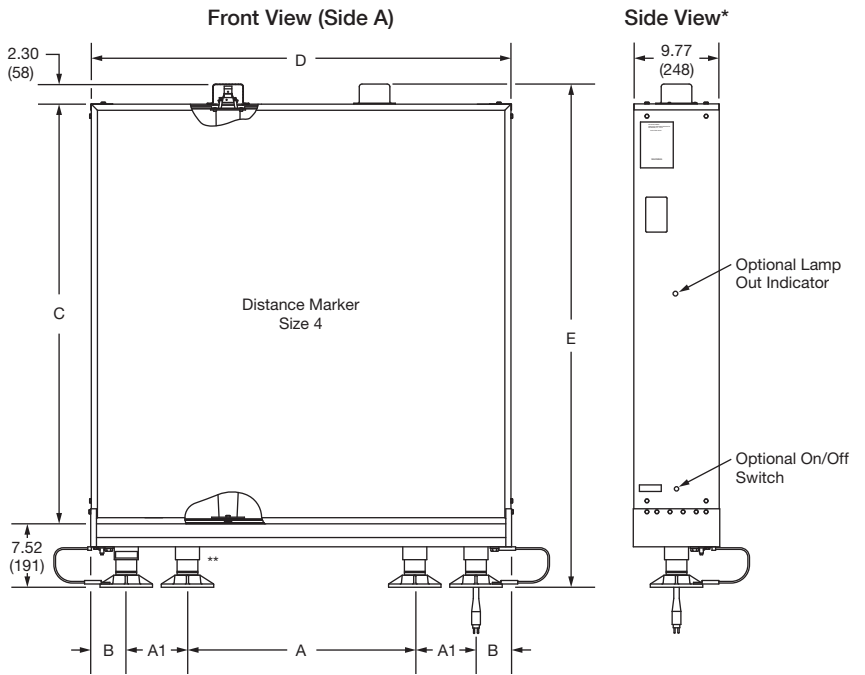




Sign Power Leg Orientation

When facing side A, the power entry is on the right. Orders should always specify the message orientation.

- * Typical for all signs.
- ** The sign includes floor flanges for all legs. Installation may vary: See the manual.



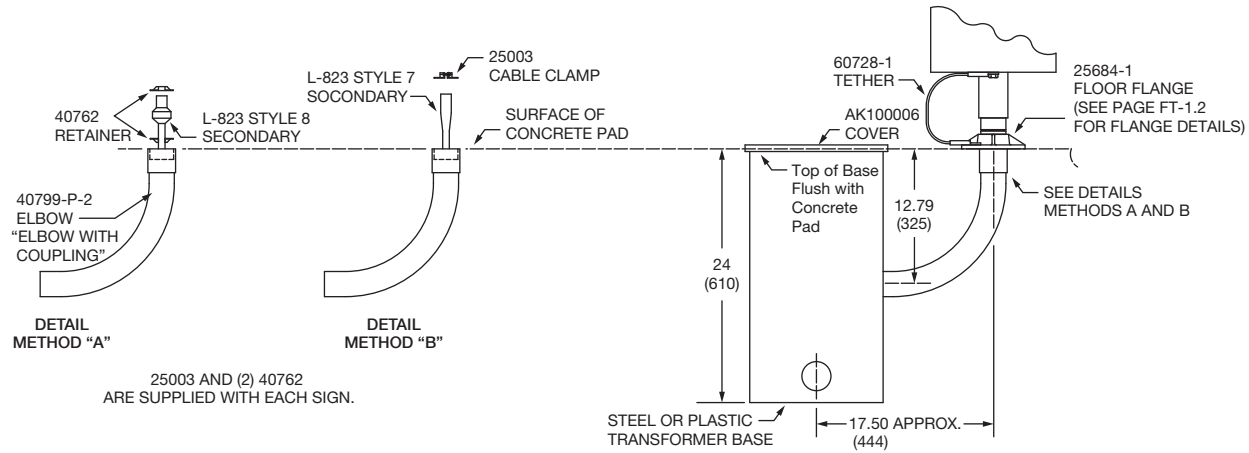
Dimensions:	inches (mm)	
Instruction Manual:	9211	Size 1,2,3,5
	9213	4

		Dimensions					
		A	A1	B	C	D	E
Size	1	14.60 (371)	—	7.30 (185)	19.50 (495)	29.20 (742)	29.05 (738)
	2**	18.20 (462)	—	9.10 (231)	25.50 (648)	36.40 (925)	35.05 (891)
	3 & 5	20.90 (531)	—	10.45 (265)	31.50 (800)	41.80 (1062)	41.05 (1043)
	4	26.00 (660)	7.00 (178)	4.00 (102)	48.00 (1219)	48.00 (1219)	57.55 (1462)

** 4 module size 2 exceeds specifications by 0.6 inches.

Installation Details

Elbow Mounting Detail



Accessories

Description	Part Number	Shipping Weight		Shipping Volume	
		Lbs.	Kg.	Cu.Ft.	Cu.M.
Base L-867, Class I, 24 inches deep	AC21242HX00301*	52.0	23.6	2.6	0.074
Base L-867, Class II (PLASTIC), 24 inches deep	900152*	16.0	7.3	2.6	0.074
Baseplate, 2 inch Hub	AP1932*	8.0	3.6	0.14	0.004
Consolidating Harness	26811-27				
Coverplate, 0.375 inches thick	AK100006	5.0	2.3	0.13	0.004
Gasket for Coverplate	10530287				
Isolation Transformer 100 watts, 6.6/6.6A	33004	12.0	5.4	0.4	0.011
Isolation Transformer 100 watts, Style 5 (fixed brightness) 5.5/6.2A	33101	12.0	5.4	0.4	0.011
Isolation Transformer 200 watts, 6.6/6.6A	33006	16.0	7.3	0.4	0.011
Isolation Transformer 200 watts, Style 5 (fixed brightness) 5.5/6.2A	33102	16.0	7.3	0.4	0.011
Isolation Transformer 300 watts, (fixed brightness) 5.5/6.2A	33103	16.0	7.3	0.4	0.011
Isolation Transformer 300 watts, 6.6/6.6A	33010	23.0	10.4	0.6	0.017
Primary L-823 Connector Kit	823KP-D4-D4				
Secondary Cable Assembly, 2 meters	CAS1M-PR-B-2**				

* If the power leg is baseplate mounted directly on a base, only the AC21242HX00301 may be used with no gasket for the baseplate AP1932 to insure equal breakaway with the other legs. The base must be installed per the instruction manual, approximately 3/8 inch high with the lower edge of the base top flange level with the concrete. If the sign power leg is elbow mounted, base 900152 has conduit entries in the required positions.

** Other lengths available. The sign includes cable clamp 25003 and two 40762 retainers.

Renewal Parts

Part Number	Description	Part Number	Description
Blank Panel	60668*	Lamp Cover Cap	60638
Circuit Board: 3-step, 5-step	61153-1**	Lamp Cover Cap Gasket	60639
Floor Flange	25684-1	Lamp Socket	61107
Frangible Coupling: Size 1	62245-1	Lead Assembly	CAS1M-P-B-86
Frangible Coupling: Size 2	62245-2	Light Tube Assembly	60685-X***
Frangible Coupling: Size 3	62245-3	Sign Face, Retroreflective with Legend	60667*
Frangible Coupling: Size 4	62245-4	Sign Upgrade Kit, Transformer, Circuit Card,	
Frangible Coupling: Size 5	62245-3	Hardware	61163
Internal Transformer	61143	Tether	60728-1
Lamp 62 watts, 6.6A	20590		

* Dash number required for size and number of modules (contact factory). Add description of color and legend.

** Only compatible with 61143 internal transformer.

*** Insert dash number 1 or 2 or 3 for sign size 1 or 2 or 3 accordingly.

