

# PRO III™ UTILITY LED, Inset

## Omnidirectional Inset Edge Light-LED

### Compliances:

Manufactured to applicable L-852T requirements in FAA AC 150/5345-46 and FAA Engineering Brief 67 "Light Sources other than Incandescent and Xenon for Airport Lighting and Obstruction Lighting Fixtures"



### Applications

The Utility LED is an airfield light used in a variety of general lighting applications such as boundary markings, apron areas, heliport applications and alternate traffic areas.

### Features

- Low profile, <.25" (6 mm) – FAA Style 3
- High-strength aluminum optical assembly
- Easy to maintain – no sealant required for prism or feed-through assembly replacement
- Pressure test plug for seal integrity verification
- Long life LED
- Direct Replacement on existing circuit
- It is recommended that caution be used during snowplow operations. Use of a rubber tipped blade is recommended. Fixture is not warranted against snowplow damage.
- Operates on 3-step or 5-step circuits, 50/60Hz, 6.6A Constant Current

### Ordering Information



Fixture Type: \_\_\_\_\_

Color: \_\_\_\_\_

- Y = Yellow
- R = Red
- G = Green
- B = Blue
- W = White

Input Power: \_\_\_\_\_

- 066 = 6.6A Constant Current
- 012 = 12 VDC Input
- 024 = 24 VDC Input
- 120 = 95-250 VAC

Fixture Diameter: \_\_\_\_\_

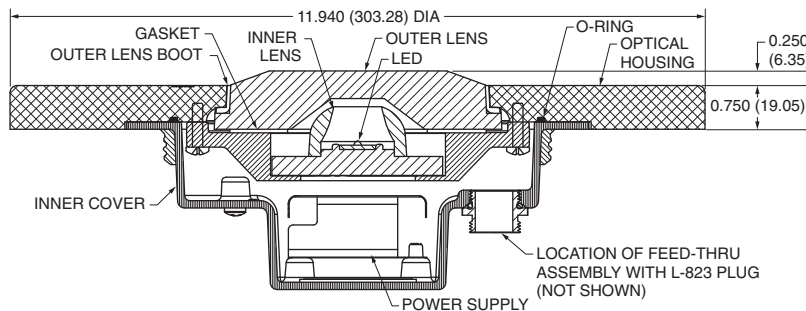
- 008 = 8" Fixture with mounting bolt pattern per IEC specifications
- 12A = 12" Fixture with 11.25" mounting BC, L868 base can
- 12B = 12" Fixture with 10.25" mounting BC, L867 base can

Options: \_\_\_\_\_

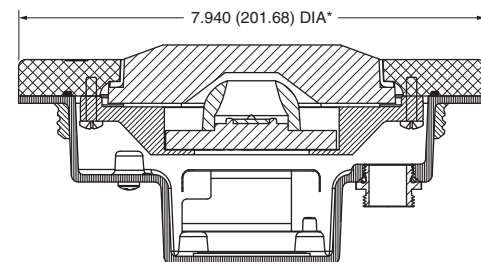
- 0 = No Options
- 1 = Arctic Kit (6.6A units only)

### Outline Drawings

12" Fixture

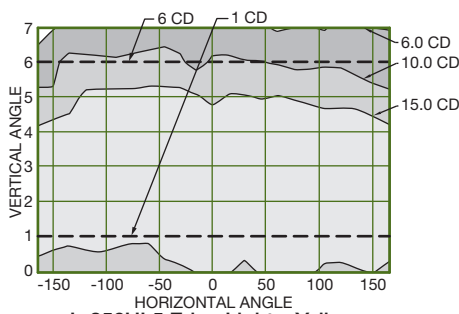


8" Fixture

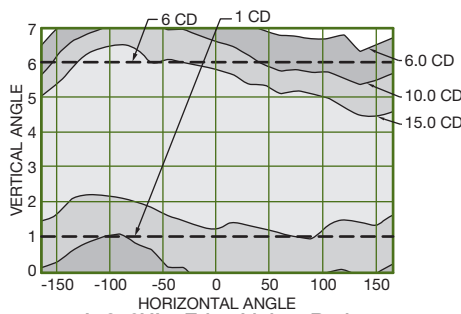


Dimensions:	inches (mm)
Instruction Manual:	1052
Shipping Weight:	10.5 lbs (4.8 kg)
Shipping Volume:	0.7 cu ft (0.02 m <sup>3</sup> )

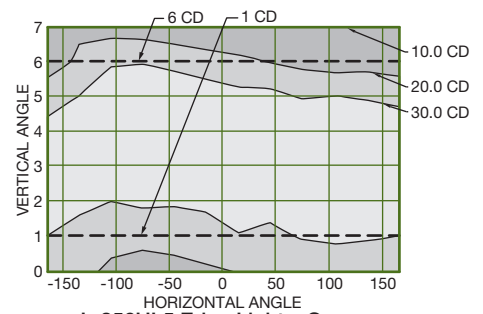
## Typical Photometric Data



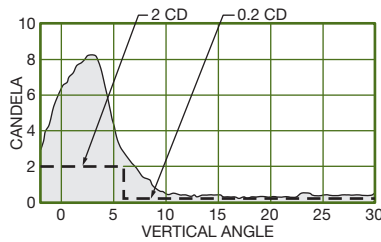
L-852UL5 Edge Light – Yellow



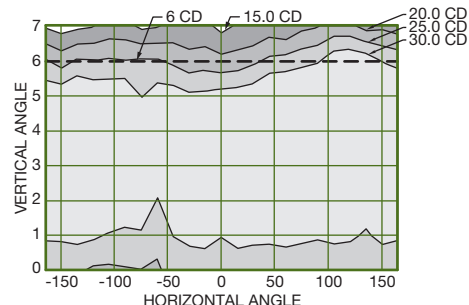
L-852UL5 Edge Light – Red



L-852UL5 Edge Light – Green



L-852UL5 Edge Light – Blue



L-852UL5 Edge Light – White

## Accessories

Item Description	Catalog Number	Item Description	Catalog Number
12" Diameter Shallow Base – Aluminum	21238	Heat Shrink Kit – 2 Piece	10047-1425
8" Diameter Shallow Base – Aluminum	21431	Isolation Transformer – 10/15W, 6.6/6.6A	33015
Base: L867B, Class 1, 24" Deep	AC21242H200301	Isolation Transformer – 20/25W, 6.6/6.6A	33016
Base: L868B, Class 1, 24" Deep	AC24242H200303	Isolation Transformer – 30/45W, 6.6/6.6 A	33001
Connector Kit – L823, 8 AWG	823KP-D4-D4	Isolation Transformer – 65W, 6.6/6.6A	33003
Heat Shrink Kit – 1 Piece	10047-2154		

## Renewal Parts

Description	Part Number	Description	Part Number
3/32" O-Ring, 6.25" I.D.	10035-62	LED Replacement Assembly – Blue	21486
Bottom Cover Assembly	21306	Outer Lens	21254
Feed Through Assy.	21122	Outer Lens Boot	21256
LED Power Supply – Arctic/Heater	21443-3	Power Supply, 12 VDC, for Option 2	10047-2949
LED Power Supply – Non Arctic/No Heater	21443-1	Power Supply, 24 VDC, for Option 3	10047-2950
LED Replacement Assembly		Power Supply, 95-250VAC, for Option 4	10047-2962
(G) Green, (Y) Yellow, (R) Red, (W) White	21486-X	Thermoswitch Replacement Kit	21326*

\* Includes 10047-2943 Thermoswitch, 21320 Locking Bracket and 10033-81 Pop Rivet.

