

PB1 & PB3 Series

High SCCR Terminal Blocks



Electrical:

- Short-circuit current ratings up to 200kA, see table next page
- Ampacities up to 310 amps
- 600Vac/dc (UL 1953)
- 75°C rated connectors
- Cu Wire range 14AWG to 350kcmil

Mechanical:

- Flammability, UL 94V0
- Panel mount
- Tin-plated aluminum (Al) connectors suitable for copper (Cu) conductors

Agency and Standards

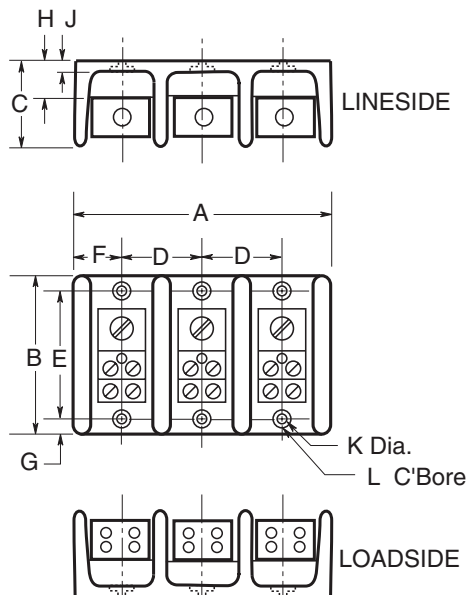
- UL 1059 Recognized, Guide XCFR2, File E221592
- General Industry Class per UL 1059, usage Category C
- CSA Certified, Class 6228-01, File 700489

Features and Benefits

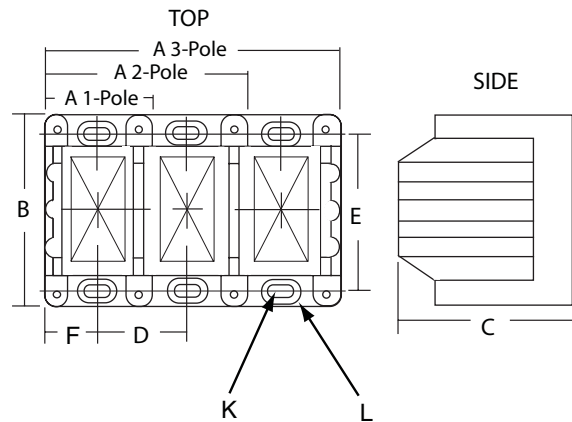
- High short-circuit current ratings up to 200kA
- UL 1059 Recognition
- 1-, 2- and 3-poles

Dimensions (inches)

PB1011-10S3 Series (1-, 2-, and 3-pole)



PB1061-3093 Series (1-, 2-, and 3-pole)



Part Number	Width/Poles			Length B	Height C	D	E	F	G	H	J	K	L
	A/1	A/2	A/3										
PB1011-10S3	1.06	1.88	2.60	2.88	1.75	0.81	2.25	0.53	0.31	0.84	0.31	0.20	0.42
PB1061-3093	1.96	3.58	5.20	4.00	3.32	1.62	3.37	0.97	-	-	-	Slot 0.20x0.41	Slot 0.42x0.62

PB1 & PB3 Series High SCCR Terminal Blocks

Electrical Data

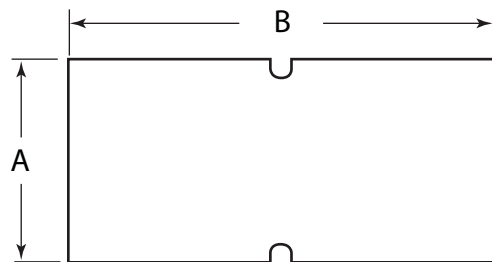
Part Number	Amps	Number of Poles	Terminal Copper Conductor Capability			Short-Circuit Current Rating Data							Minimum Enclosure Size Inches	
			Lineside	Loadside	Configuration	Conductors		Max Fuse Class & Amp*						SCCR kA
			Wire Range	Wire Range	Openings per Pole Line Load	Line side AWG or kcmil	Load side AWG or kcmil	J JDL	T TJS TJN	RK1 LESRK LENRK	RK5 ECSR ECNR			
PB1011	175A	1	2/0 TO 8 AWG	2/0 TO 8 AWG		2/0 to 8	2/0 to 8	200	200	200	60	200	16 X 16 X 6.75	
PB1012		2												
PB1013		3												
PB1041	175A	1	2/0 TO 8 AWG	4 TO 14 AWG		2/0 to 8	4 to 12	200	200	200	60	200	16 X 16 X 6.75	
PB1042		2					4 to 14	175	175	100	60	100		
PB1043		3						200	200	100	60	50		
PB10S1	175A	1	2/0 TO 8 AWG	1/4-20 X 3/4 STUD		2/0 to 8	Stud	200	200	100	60	200	16 X 16 X 6.75	
PB10S2		2												
PB10S3		3												
PB1061	175A	1	2/0 TO 8 AWG	4 TO 14 AWG		2/0 to 8	4 to 12	400	400	200	100	200	24 X 20 X 6.75	
PB1062		2					4 to 14	400	400	400	100	100		
PB1063		3						175	175	100	60	100		
PB3061	310A	1	350 kcmil to 4 AWG	4 TO 12 AWG		350 to 4	4 to 8	400	400	200	100	200	24 X 20 X 6.75	
PB3062		2					4 to 12	400	400	400	100	100		
PB3063		3						175	175	100	60	100		
PB3121	310A	1	350 kcmil to 4 AWG	4 TO 14 AWG		350 to 4	4 to 8	400	400	200	100	200	24 X 20 X 6.75	
PB3122		2					4 to 14	175	175	100	60	100		
PB3123		3						175	175	100	60	100		
PB3091	310A	1	350 kcmil to 4 AWG	(6) 2 to 12 AWG (3) 1/0 to 12		350 to 4	1/0 to 6	400	400	400	100	100	24 X 20 X 6.75	
PB3092		2					4 to 12	400	400	400	100	100		
PB3093		3						175	175	100	60	100		

Ampacities 75C per NEC® Table 310.16 and UL508A Table 28.1

*Class G 60A (SEC-60) or less or Class CC 30A (EDCC30, HCTR30, HCLR30) or less are suitable for all the SCCR in this table

Optional Covers & Dimensions (inches)

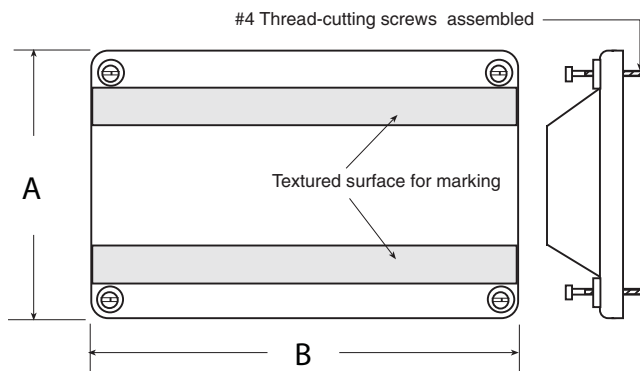
PBC 31, 32, 33 Series



Terminal Block Part Number	Poles	Cover Part Number	A	B
PB1011, 1041, 10S1	1	PBC21	0.94	2.75
PB1012, 1042, 10S2	2	PBC22	1.75	2.75
PB1013, 1043, 10S3	3	PBC23	2.56	2.75
PB1061, 3061, 3091, 3121	1	PBC31	4.14	2.10
PB1062, 3062, 3092, 3122,	2	PBC32	4.14	3.72
PB1063, 3063, 3093, 3123	3	PBC33	4.14	5.34

*All covers provided with mounting screws

PBC 21, 22, 23 Series

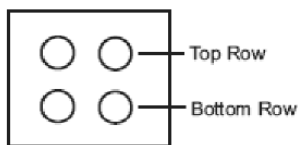


PB1 & PB3 Series

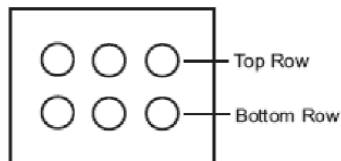
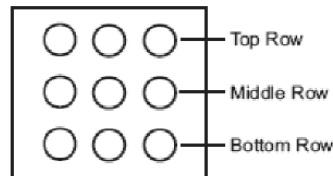
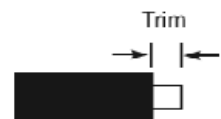
High SCCR Terminal Blocks

Wire Data

Part Number	Lineside				Loadside			
	Cu Wire Range	Torque Lb-In (N*m)	Trim Length in (mm)	Hex Key	Cu Wire Range	Torque Lb-In (N*m)	Trim Length in (mm)	Hex Key, Slot, Stud
PB1011 PB1012 PB1013	2/0 to 8 AWG 70 to 10mm ²	110 (12.4)	0.700 (17.8)	3/16"	2/0 to 8 AWG 70 to 10mm ²	110 (12.4)	0.700 (17.8)	3/16"
PB1041 PB1042 PB1043	2/0 to 8 AWG 70 to 10mm ²	120 (13.6)	0.670 (17.0)	3/16"	4 to 6 AWG 25 to 16mm ² 8 AWG 10mm ² 10 to 14 AWG 6 to 2.5mm ²	35 (4.0) 25 (2.8) 20 (2.3)	0.470 (11.9) top row, 0.780 (19.8) bottom row	Slot
PB1051 PB1052 PB1053	2/0 to 8 AWG 70 to 10mm ²	120 (13.6)	0.670 (17.0)	3/16"	N/A	50 (5.7)	N/A	1/4 - 20 Stud
PB1061 PB1062 PB1063	2/0 to 8 AWG 70 to 10mm ²	120 (13.6)	0.700 (17.8)	3/16"	4 to 6 AWG 25 to 16mm ² 8 AWG 10mm ² 10 to 14 AWG 6 to 2.5mm ²	35 (4.0) 25 (2.8) 20 (2.3)	0.480 (12.2) top row, 0.800 (20.3) bottom row	Slot
PB3061 PB3062 PB3063	350 Kcmil to 4 AWG 185 to 25mm ²	275 (31.1)	0.900 (22.9)	5/16"	4 to 6 AWG 25 to 16mm ² 8 AWG 10mm ² 10 to 12 AWG 6 to 4mm ²	35 (4.0) 25 (2.8) 20 (2.3)	1.00 (25.4) top row, 0.450 (11.43) bottom row	Slot
PB3121 PB3122 PB3123	350 Kcmil to 4 AWG 185 to 25mm ²	275 (31.1)	0.900 (22.9)	5/16"	4 to 6 AWG 25 to 16mm ² 8 AWG 10mm ² 10 to 14 AWG 6 to 2.5mm ²	35 (4.0) 25 (2.8) 20 (2.3)	0.450 (11.4) top row, 0.630 (16.0) middle row, 0.920 (23.4) bottom row	Slot
PB3091 PB3092 PB3093	350 Kcmil to 4 AWG 185 to 25mm ²	275 (31.1)	0.900 (22.9)	5/16"	2 to 3 AWG 35mm ² 4 to 6 AWG 25 to 16mm ² 8 AWG 10mm ² 10 to 12 AWG 6 to 4mm ²	50 (5.7) 45 (5.1) 40 (4.5) 35 (4.0)	0.450 (11.4) top row, 0.630 (16.0) middle row, 0.920 (23.4) bottom row	Slot top row, slot middle row, 3/16" Hex bottom row



PB 1041, 1042, 1043

PB 1061, 1062, 1063
PB 3061, 3062, 3063PB 3121, 3122, 3123
PB 3091, 3092, 3093

The only controlled copy of this document is the electronic read-only version maintained by Cooper Bussmann. All other copies of this document are by definition uncontrolled. This bulletin is intended to clearly present comprehensive product data and provide technical information that will help the end user with design applications. Cooper Bussmann reserves the right, without notice, to change design or construction of any products and to discontinue or limit distribution of any products. Cooper Bussmann also reserves the right to change or update, without notice, any technical information contained in this bulletin. Once a product has been selected, it should be tested by the user in all possible applications.