

SNAP 'N SHIELD™

universal, clevis and pipe supports



For more information, visit
www.cooperline.com/snap-n-shield
or www.eaton.com/b-lineseries

U.S. Customer Service Center is staffed Monday through Friday from 7 a.m. to 5 p.m. Central Standard Time.

Eaton
509 West Monroe Street
Highland, IL 62249
United States
800-851-7415
www.cooperline.com/contactus

Eaton
1000 Eaton Boulevard
Cleveland, OH 44122
United States
Eaton.com

B-Line Division
509 West Monroe Street
Highland, IL 62249

Eaton.com
© 2016 Eaton
All Rights Reserved
Printed in USA
Publication No. SA310013EN
June 2017 SNS-17

Eaton is a registered trademark.
All other trademarks are property
of their respective owners.

Follow us on social media to get the
latest product and support information.

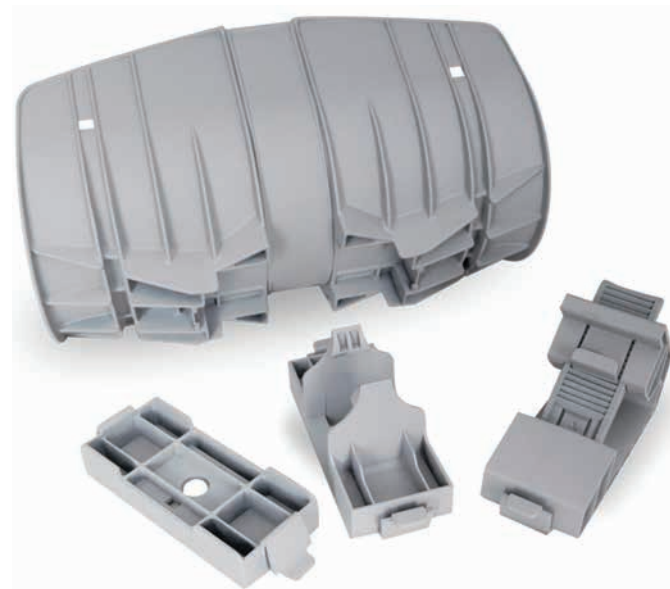


Reliable, durable, and cost effective support options to help protect your insulation.

Snap 'N Shield™ universal pipe supports

Features and benefits

- One shield with three cartridges options allow for use on strut, clevis hangers or angle iron
- Lip design at ends of shield allow for lateral movement of piping without damaging insulation
- Snap on design helps eliminate shield movement; helping prevent insulation damage
- Fast, easy installation – no tools required
- Suited for horizontal pipe runs
- Integrated slots for liquid line tie wraps
- Clevis hanger cartridge has optional magnetic shock detection device (tool-free “clip-on” design); three flags available for different shock intensity



Universal Support Technical Specifications

- Applications:**
Refrigeration, air conditioning, and plumbing
- Material:**
Thermylene P6-20FG-0738
- UV resistant
 - Operating temperature -40° to 178°F
 - Paintable (preserves mechanical properties even after painting)
- Certification:**
UL classified for USA (UL-723 (ASTM E 84) and UL-2043)
ULC listed for Canada (ULC-S102.2).
- Color:**
Silver gray (G)
- Non-adhesive surface for linear expansion of thermal insulation**

Shields Catalog #	Inside Opening	Wt./C	Shields Catalog #	Inside Opening	Wt./C
BPU250G	2.34"	21.4	BPU650G	6.46"	57.1
BPU350G	3.45"	29.5	BPU850G	8.65"	116.7
BPU450G	4.5"	41.7	BPU1050G	10.65"	187.5
BPU550G	5.56"	51.1	BPU1250G	12.65"	212.5

Cartridges and Accessories

Catalog #	Description	Wt./C
BPUSTRUTMTB22B24B26	Strut Cartridge for 1-5/8" Channel	11.5
BPUSTRUTMTB52B54B56	Strut Cartridge for 13/16" Channel	8.8
BPUSTRUTMT4D21	Strut Cartridge for 4D21 Channel	10.4
BPUSTRUTMT4D22	Strut Cartridge for 4D22 Channel	11.5
BPUANGLMT	Angle Iron Cartridge	19.4
BPUHGRMT	Clevis Hanger Cartridge	8.8
BPUUSD	Clevis Hanger Shock Detector	8.6
BPHUCSG	Small Plastic Cover (2"-6")	57.2
BPHUCLG	Large Plastic Cover (8"-12")	116.7
BPU-1050S*	Strut/Angle Iron Stabilizer for 10" Shield	19.45
BPU-1250S*	Strut/Angle Iron Stabilizer for 12" Shield	22.22

* Must be ordered for 10" and 12" shields when using in strut and angle iron applications.

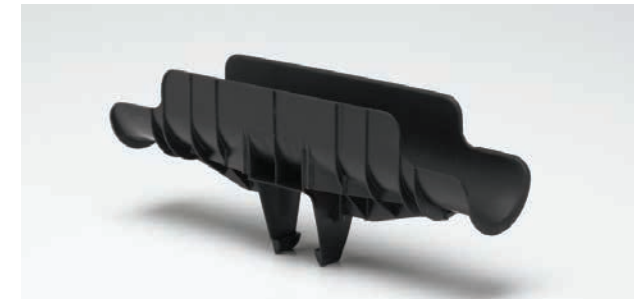
Copper Tubing Size	Insulation Thickness				
	1/2"	3/4"	1"	1 1/2"	2"
1/4"	BPU250	BPU250	BPU350	BPU350	BPU450
3/8"	BPU250	BPU250	BPU350	BPU450	BPU550
1/2"	BPU250	BPU250	BPU350	BPU450	BPU550
5/8"	BPU250	BPU250	BPU350	BPU450	BPU550
3/4"	BPU250	BPU350	BPU350	BPU450	BPU550
1"	BPU250	BPU350	BPU350	BPU450	BPU550
1 1/4"	BPU350	BPU350	BPU350	BPU450	BPU550
1 1/2"	BPU350	BPU350	BPU450	BPU550	BPU650
2"	BPU350	BPU450	BPU450	BPU550	BPU650
2 1/2"	BPU450	BPU450	BPU550	BPU650	BPU850
3"	BPU450	BPU550	BPU550	BPU650	BPU850
3 1/2"	BPU550	BPU550	BPU650	BPU850	BPU850
4"	BPU550	BPU650	BPU650	BPU850	BPU850

Sch. 40/80 Pipe	Insulation Thickness				
	1/2"	3/4"	1"	1 1/2"	2"
1/4"	BPU250	BPU250	BPU350	BPU450	BPU550
3/8"	BPU250	BPU250	BPU350	BPU450	BPU550
1/2"	BPU250	BPU350	BPU350	BPU450	BPU550
3/4"	BPU250	BPU350	BPU350	BPU450	BPU550
1"	BPU250	BPU350	BPU350	BPU450	BPU550
1 1/4"	BPU350	BPU350	BPU450	BPU550	BPU650
1 1/2"	BPU350	BPU350	BPU450	BPU550	BPU650
2"	BPU350	BPU450	BPU450	BPU550	BPU650
2 1/2"	BPU450	BPU450	BPU550	BPU650	BPU850
3"	BPU550	BPU550	BPU550	BPU850	BPU850
3 1/2"	BPU550	BPU550	BPU650	BPU850	BPU850
4"	BPU550	BPU650	BPU850	BPU850	BPU850

Snap 'N Shield™ pipe supports

Features and benefits

- Fast, easy installation – snaps onto channel
- No tools required
- Snap on design helps eliminate shield movement; helping prevent insulation damage
- Helps protect insulation from damage that can be caused by rubbing against pipes or fittings
- Designed for side-by-side installation
- Meets UL94 HB flammability standards



Pipe Support Technical Specifications

- Applications:**
Strut or trapeze mounted horizontal pipe runs for refrigeration, air conditioning and plumbing
- Material:**
Basell Pro-Fax 8523 Polypropylene Copolymer
- UV resistant
 - Operating temperature -40° to 178°F
 - Paintable (preserves mechanical properties even after painting)
- Certification:**
UL classified for USA (UL-723 (ASTM E 84) and ULC listed for Canada (ULC-S102.2)).
Meets UL94 HB flammability standards.
- Available Colors:**
Black (B) and white (W)

Black Support Catalog #	White Support Catalog #	Gray Support Catalog #	Nominal Inside Opening	Wt./C
BPS225B	BPS225W	–	2.25"	26
BPS325B	BPS325W	–	3.25"	37
BPS425B	BPS425W	–	4.25"	52
BPS525B	BPS525W	–	5.25"	69
BPS625B	BPS625W	–	6.25"	83
BPS825B	BPS825W	BPS825G	8.25"	103
BPSCB	BPSCW	–	Universal Cover	22

Copper Tubing Size	Insulation Thickness				
	1/2"	3/4"	1"	1 1/2"	2"
1/4"	BPS225	BPS225	BPS325	BPS425	BPS525
3/8"	BPS225	BPS225	BPS325	BPS425	BPS525
1/2"	BPS225	BPS225	BPS325	BPS425	BPS525
5/8"	BPS225	BPS325	BPS325	BPS425	BPS525
3/4"	BPS225	BPS325	BPS325	BPS425	BPS525
1"	BPS225	BPS325	BPS325	BPS425	BPS525
1 1/4"	BPS325	BPS325	BPS425	BPS525	BPS625
1 1/2"	BPS325	BPS325	BPS425	BPS525	BPS625
2"	BPS325	BPS425	BPS425	BPS525	BPS625
2 1/2"	BPS425	BPS425	BPS525	BPS625	BPS825
3"	BPS425	BPS525	BPS525	BPS625	BPS825
3 1/2"	BPS525	BPS525	BPS625	BPS825	BPS825
4"	BPS525	BPS625	BPS625	BPS825	BPS825

Sch. 40/80 Pipe	Insulation Thickness				
	1/2"	3/4"	1"	1 1/2"	2"
1/4"	BPS225	BPS225	BPS325	BPS425	BPS525
3/8"	BPS225	BPS225	BPS325	BPS425	BPS525
1/2"	BPS225	BPS325	BPS325	BPS425	BPS525
3/4"	BPS225	BPS325	BPS325	BPS425	BPS525
1"	BPS325	BPS325	BPS425	BPS525	BPS625
1 1/4"	BPS325	BPS325	BPS425	BPS525	BPS625
1 1/2"	BPS325	BPS425	BPS425	BPS525	BPS625
2"	BPS425	BPS425	BPS425	BPS525	BPS625
2 1/2"	BPS425	BPS525	BPS525	BPS625	BPS825
3"	BPS525	BPS525	BPS625	BPS825	BPS825
3 1/2"	BPS525	BPS625	BPS625	BPS825	BPS825
4"	BPS625	BPS625	BPS825	BPS825	BPS825