

**GSMSG-08**

# Safety Gratings

Walkways, Flooring, Stair Treads & Ladder Rungs  
Including Grip Strut® Safety Grating

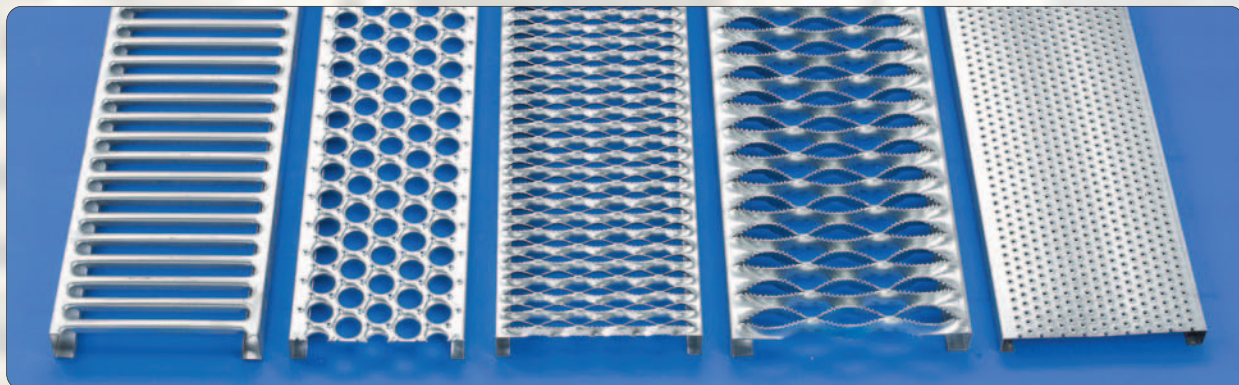
**COOPER B-Line**

# ***Cooper B-Line targets your Grating needs with,***

***more types***

***more sizes &***

***more finishes***



**Grate-Lock®**

**Perf-O-Grip®**

**Grip Strut®**

**Heavy Duty Grip Strut®**

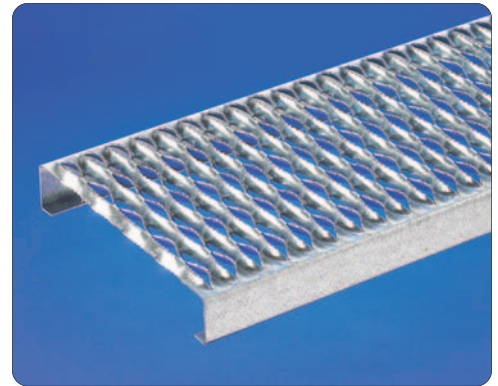
**Traction Tread™**

## ***Quality Safety Gratings With The Widest Assortment of:***

- ***Ladder Rungs***
- ***Stair Treads***
- ***Walkways***
- ***Mezzanine Flooring***
- ***Rooftop Walkways***

## Grip-Strut® Safety Grating

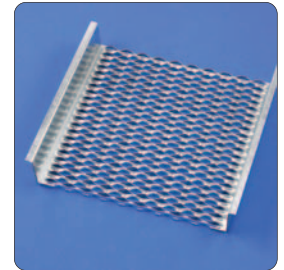
Cooper B-Line is the manufacturer of the original **Grip Strut®** Safety Grating. All others are merely imitations. **Grip Strut** is a high strength lightweight metal grating designed for safety underfoot. The unique one-piece diamond-shaped construction provides slip resistance in all directions. **Grip Strut** is ideally suited for all walking/working surfaces where mud, ice, snow, grease, oil and detergents create slippery or hazardous conditions. **Grip Strut** Grating is commonly used for work platforms, industrial flooring, catwalks, balconies, storage areas, walkways, and stair treads.



Plank



Available Configurations		
Side Channel Available	Gauge & Type Available	Product Widths Available
1 1/2", 2", 2 1/2", 3" (Planks)	12 ga. or 14 Ga. Galvanized or HRP&O Steel 0.080 or 0.100 Aluminum 5052-H32	4 3/4", 7", 9 1/2", 11 3/4", 18 3/4", 24" (Planks)
4 1/2" (Walkway)	* 16 Ga. Type 304 Stainless Steel	18 3/4", 24" (Walkway)



Walkway

Standard Lengths - 10' & 12'

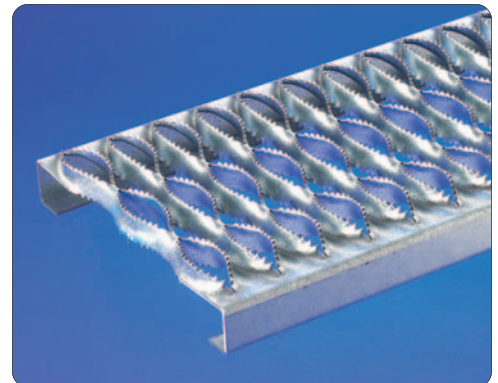
Type 316 Stainless Steel available upon special quote.

Special fabrication, cutting or specialty configurations available upon request.

\* Note: Stainless only available in plank form and up to 11 3/4" wide.

## Heavy-Duty Grip-Strut® Safety Grating

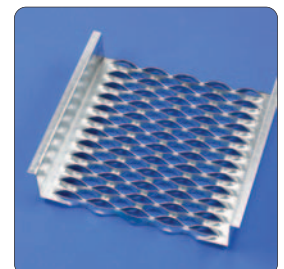
**Heavy Duty Grip Strut®** is a one-of-a-kind plank grating sporting a hefty 24 foot clear span capability. **Heavy Duty Grip Strut** Safety Grating products offer the advantages of regular **Grip Strut** plus the capabilities for greater loads and/or longer spans. **Heavy Duty Grip Strut** Walkways are ideal for process plants, refineries, grain elevators, conveyor walkways, under-bridge inspection walkways, papermills, etc. **Heavy Duty Grip Strut** is more competitive than ever against Bar Grating. Short lead times, 24-foot spans, less support structure and labor savings make it the most unique formed plank grating available.



Plank



Available Configurations		
Channel Heights Available	Gauge & Type Available	Product Widths Available
2", 2 1/2", 3", 4" Planks	10 Ga. Galvanized Steel & HRP&O Steel	9 1/4", 13 3/4", 23 1/4", 27 3/4", 36" (Planks)
5" (Walkway)		24", 30" & 36" (Walkway)



Walkway

Standard Lengths - 10' & 12'. Walkways also available in 20' & 24'.

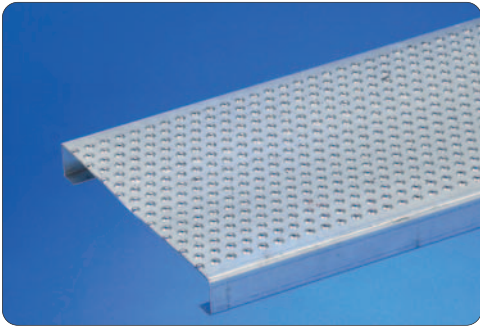
9 Ga. & 11 Ga. available upon request.

Hot Dip Galvanized after fabrication is available upon request.

Special fabrication, cutting or specialty configurations available upon request.

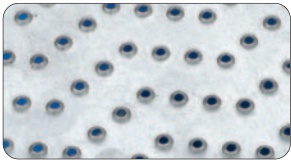
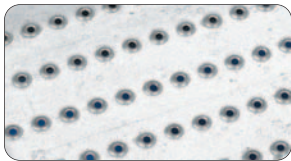
# Product

## Traction Tread™ Flooring Plank, Sheet, & Ladder Rungs

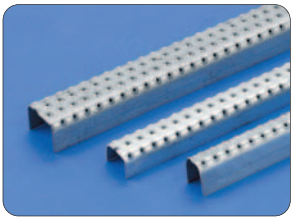


Plank

**Traction Tread** panels have a surface of perforated raised buttons. The perforations allow spillage to drain and break oil film, detergent, and other slippery agents away from the walking surface. **Traction Tread** is ideal for pedestrian traffic and the button design is the best in the industry for allowing women in heels, as well as a man in work boots, to walk comfortably and safely over the surfaces. This product is offered in planks and 36" x 120" sheets. **Traction Tread** services many applications such as pedestrian walkways, scaffold planking, mezzanines, stair treads, the resurfacing of worn materials, etc. -- useful anywhere a light slip-resistance flooring is required.



Other Button Patterns Available



Ladder Rungs

Available Configurations			
Product	Channel Heights	Gauge & Material	Widths
Sheet	N/A	11 Ga., 12 Ga., 13 Ga., 14 Ga. & 16 Ga. HRP&O Steel 0.125 Aluminum 5052-H32	36"
Planks	2", 1 1/2" (Minimum)	11 Ga., or 13 Ga. Pre-Galvanized Steel 0.125 Aluminum 5052-H32	7", 10", 12"
Ladder Rungs	1 1/2" (2 row)	11 Ga. or 13 Ga. Galvanized or HRP&O Steel	1 1/4" (2 row)
	1 1/8" (3 row)		1 5/8" (3 row)
	1 1/2" (4 row)	0.125 Aluminum 5052-H32	2 1/4" (4 row)

Sheet Length - 10' (120") - also available in HRP&O steel

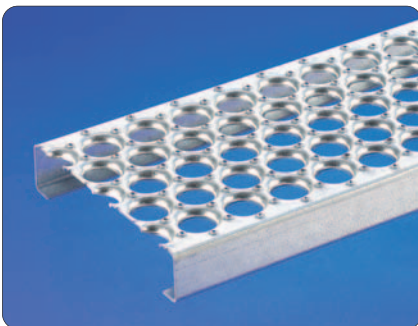
Plank Lengths - 10' & 12'

Ladder Rung Length - 48 3/4" & 60"

Special fabrication, cutting or specialty configurations available upon request.

Stainless available upon request.

## Perf-O Grip® Grating



Plank

**Perf-O Grip** is a plank metal grating offering a slightly less aggressive surface than **Grip Strut**. **Perf-O Grip** is made with a round hole pattern. **Perf-O Grip's** light weight and resilient design makes the product easy to handle and install producing a very economical installed cost.

Available Configurations		
Channel Heights Available	Gauge & Type Available	Product Widths Available
1 1/2", 2" (Plank)	11 Ga. or 13 Ga. Galvanized Steel or HRP&O Steel	5", 7", 10", 12", 18", 24" (Plank)
5" (Walkway)		.125 Aluminum 5052-H32

Standard Lengths - 10' & 12'

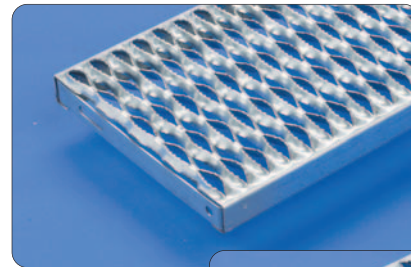
Stainless Steel available upon request and special quotation. Hot Dip Galvanized after fabrication is available upon request and special quotation.

Special fabrication, cutting or specialty configurations available upon request.

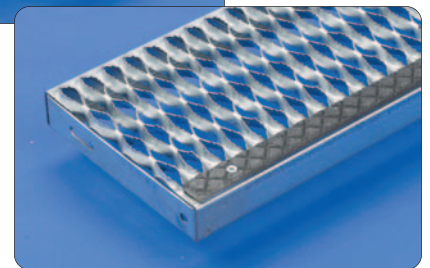
## Grip-Strut® Stair Treads, Ladder Rungs, Reconditioning Material

Cooper B-Line offers a full range of standard Stair Tread products from **Grip Strut**, **Heavy Duty Grip Strut**, **Perf-O Grip**, **Traction Tread**, and **Grate-Lock**.

**Grip Strut Safety Grating Treads** are offered with or without abrasive nosing.



Grip Strut®  
Stair Tread  
without nosing

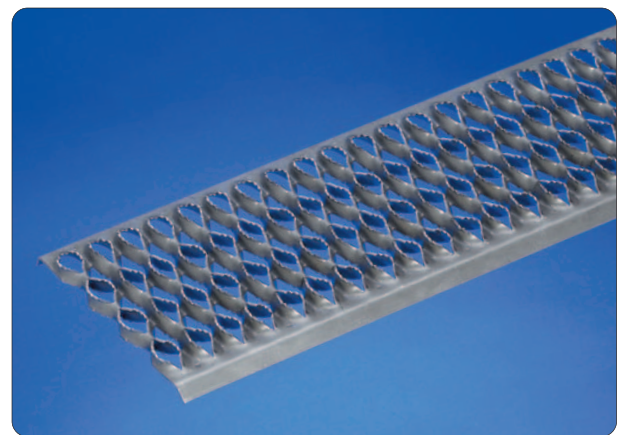


Grip Strut®  
Stair Tread  
with abrasive  
nosing

Reconditioning material is offered as an economical method of resurfacing worn and unsafe floors.

Down-turned edges allow the grating to lie flat and secure over existing flooring.

**Traction Tread Sheet** makes versatile reconditioning material also.



Grip Strut® Reconditioning Material

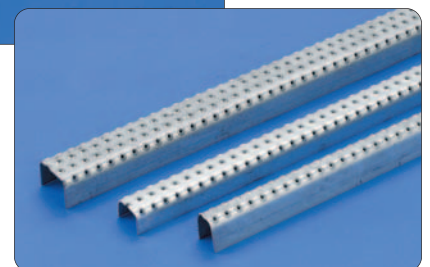
Cooper B-Line offers a large variety of ladder rungs for use in different environments and industries.

**Grip Strut One-Diamond Ladder Rungs** are ideal in environments where safe footing is hard to come by. Diamonds can also run perpendicular to the length.

**Traction Tread Ladder Rungs** are ideal for use in hand-over-hand ladder applications where safe footing is also required.



Grip Strut®  
Ladder Rung



Traction Tread  
Ladder Rung

# Product

## Grate-Lock® Interlocking Type Mezzanine Grating



Smooth (MS)  
shown



Gripping (MG) configuration

**Grate-Lock** grating is an easy-to-install system of interlocking planks, treads and accessories, providing safe, sturdy footing for mezzanine floors, platforms, walkways and other applications. Increased load performance has been achieved through interlocking planks and a “ventilated” rung design. Hundreds of sole-gripping dimples insure a safe surface in all kinds of environments. **Grate-Lock** lets you specify lighter gauge steel for substantial material savings.

Available Configurations		
Channel Heights Available	Gauge & Type Available	Product Widths Available
1 1/2", 2 1/2"	18 Ga. or 14 Ga. Galvanized Steel	3" (Solid Filler) 6", 9", 12"

Standard Lengths - 12', 20' & 24'

Side Channels in Male/Female (MF), Female/Female (FF), or Male/Male (MM) configurations.

Surface in smooth (MS) or gripping (MG) configuration.

Special fabrication cutting or specialty configurations available upon request and special quotation.

Other heights and steel gauges available.

## Lambda-Lok® Solid Mezzanine Grating



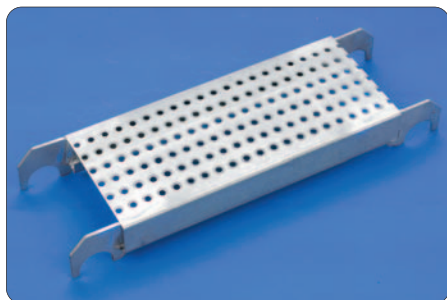
**Lambda-Lok** is a patented solid plank flooring that does not duplicate conventional grating. Carts roll freely on **Lambda-Lok's** strong ribbed surface. Unique **Lambda-Loks** support the ribbed surface on centers chosen by you or your load requirements. The planks lock together without the need for nuts, bolts, or crimping tools. Patented, positive attachment holds planks in place, yet provides an “unlocking” feature for later removal or replacement. **Lambda-Lok** is right at home in applications for mezzanines, catwalks, subfloors, walkways, or inverted for ceilings.

Available Configurations		
Channel Height	Gauge & Material	Width
2 1/2"	18 Ga. Galvanized Steel	11 7/8"

Standard Length - 12'

Special finish available upon request and special quotation.

## Steel Scaffold Planks



**Steel Scaffold Planks** are perfect for demanding projects. For harsh conditions and hazardous work, **Steel Scaffold Planks** outperform lumber. Cooper B-Line products provide a variety of slip resistant surface patterns. The percentage of open area is also controlled, based upon specific job needs. Solid decks keep items from dropping through to lower levels. Open grating patterns let light and liquids pass through. Popular lengths and widths are available, along with various hook styles. All are protected with a durable hot dipped galvanized finish. **Scaffold Planks** can be cleaned or recycled. As with all Cooper B-Line products, technical support and custom designs are available.

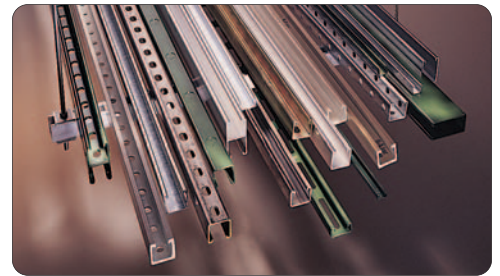
## Rooftop Systems



Roofs look durable - but they were never intended to be walked on. As the volume of rooftop equipment keeps expanding, the wear and tear (literally) of maintenance traffic can lead to leaks and premature roof replacement. Cooper B-Line offers **Rooftop Walkway Systems** to solve these problems to keep your roof leak free and long-lived. The patented elevated **Grip Strut Rooftop Walkway System** is unlike others in that they are elevated and discourage shortcuts and emphatically define a path that's visible even in heavy snow. This system is interchangeable with our different walking surfaces such as **Perf-O Grip** and **Grate-Lock**. Cooper B-Line also offers a **Grate-Lock RTWW** systems for any standing seam metal roof and a complete pipe support system.

**Cooper B-Line's** Bolted Framing satisfies a broad range of needs for mechanical and electrical systems. Designed and manufactured to exacting standards, it simplifies and reduces the cost of structural fabrication and makes possible in-plant construction of frames for machinery, racks and pipes. Bolted framing provides excellent supports for lighting fixtures and electrical equipment. When embedded in concrete, it provides a convenient flush-mounting system for ceilings and floors. Roll-formed steel channels and hundreds of fittings, brackets, braces and accessories are available from Cooper B-Line.

## Bolted Framing



**Cooper B-Line's** Cable Tray Systems are available in many styles and designs. These systems are designed for control, power and signal conductors. Trays are made in straight sections with matching fittings to accommodate all changes of direction or quality of cables. System components are corrosion-resistant, and are made from galvanized steel, durable aluminum alloy, or stainless steel. Cable trays can also support metal, glass and plastic pipes.

## Cable Tray Systems



## Specialty Products & Fabrications

Cooper B-Line is dedicated to serving your needs. Cooper B-Line provides specialty fabrication services (cut to length, banding, welding, and general fabrication) at your request. If you have an idea in mind, let us know and we will make every effort to fill your needs and solve your specific problems.

## Other Cooper B-Line Product Lines

Strut Systems (Bolted Framing)  
Cable Tray Systems  
Electrical Enclosures  
Electronic Enclosures  
Pipe Hanger & Support Systems  
Spring Steel Fasteners  
Cable Runway & Relay Racks (CommData)  
Meter Mounting & Distribution Equipment  
Anchors

GSMMSG-08

### Cooper B-Line

509 West Monroe Street  
Highland, IL 62249  
Phone: 800-851-7415  
Fax: 618-654-1917

[www.cooperbline.com](http://www.cooperbline.com)



**SYSTEMS THAT MAKE SENSE**

### GS Metals (Marketing Services)

3764 Longspur Road  
Pinckneyville, IL 62274  
Phone: 800-582-3643 • 800-851-9341  
Fax: 618-357-8486

[www.gsmetals.com](http://www.gsmetals.com)  
[www.gripstrut.com](http://www.gripstrut.com)

ISO 9001 Registered

Cooper Industries, Ltd.  
600 Travis, Ste. 5800  
Houston, TX 77002-1001  
Phone: 713-209-8400  
[www.cooperindustries.com](http://www.cooperindustries.com)