

Fastening Solutions

For Safety Gratings

GSMFSSG-10

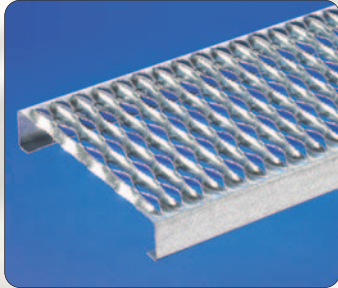
**COOPER B-Line**



Grating Product Overview

GRIP STRUT™

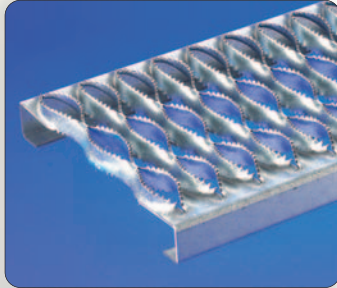
Safety Grating



Cooper B-Line is the manufacturer of the original safety grating, GRIP STRUT. All others are merely imitations.

Heavy Duty GRIP STRUT™

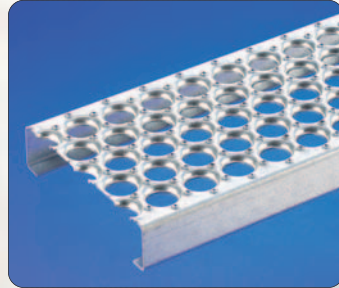
Safety Grating



Heavy Duty GRIP STRUT offers the advantages of GRIP STRUT plus the ability for greater loads and longer spans.

PERF-O-GRIP™

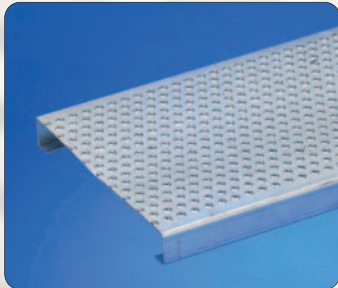
Safety Grating



PERF-O-GRIP is a plank metal grating offering a slightly less aggressive surface than GRIP STRUT.

TRACTION TREAD™

Flooring, Plank/Sheet and Ladder Rungs



TRACTION TREAD panels have surface or perforated raised buttons. The perforations allow spillage to drain and break oil film, detergents and other slippery agents away from walking surface.

GRATE-LOCK™

Interlocking Type Mezzanine Grating



GRATE-LOCK Grating is an easy-to-install system of interlocking planks, treads and accessories, providing safe, sturdy footing for mezzanine floors, platforms, walkways and other applications.

LAMBDA-LOK™

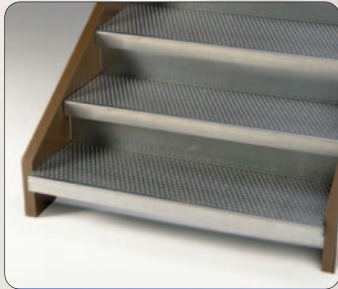
Solid Mezzanine Grating



LAMBDA-LOK is a patented solid plank flooring with a unique, strong ribbed surface that does not duplicate conventional grating. Ideal for mezzanines, walkways, catwalks, or inverted for ceilings.

Stair Treads

Ladder Rungs and Reconditioning Material



Cooper B-Line offers a full range of standard and non-standard Stair Tread products from GRIP STRUT, Heavy Duty GRIP STRUT, PERF-O-GRIP, TRACTION TREAD and GRATE-LOCK.

Rooftop

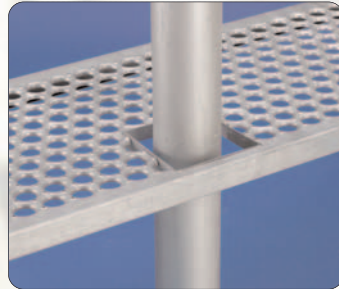
Walkway Systems



Roofs may look durable, but they were never really intended to be a walking surface. Cooper B-Line offers rooftop systems to help maintain the life of your roof.

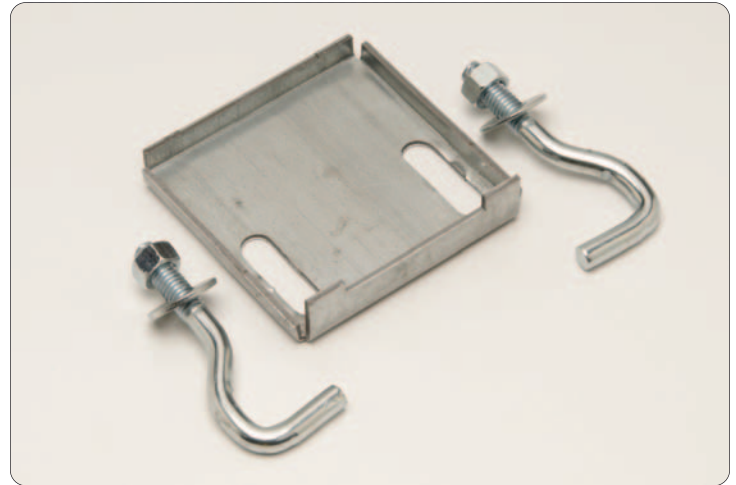
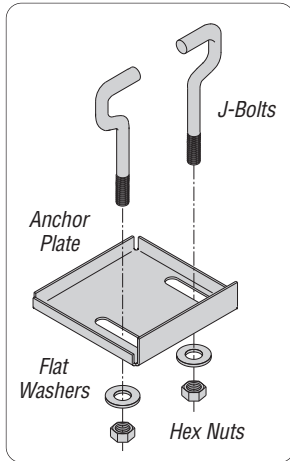
Specialty

Products and Fabrications



Let our qualified technical specialists assist you with your next grating project.

(ACA) Anchor Plate



Assembly Includes

- (1) ACA Anchor Plate
- (2) 3/8"-16 J-Bolts
- (2) 3/8" Flat Washers
- (2) 3/8"-16 Hex Nuts

Anchor Plate Assemblies *			
UPC Number	Catalog Number	J-Bolt Size	Wt./Ea.
66251634139	ACA15	3/8"-16 x 1 1/2"	0.80
66251634141	ACA20	3/8"-16 x 2"	0.80
66251634142	ACA25	3/8"-16 x 2 1/2"	0.80
66251634144	ACA30	3/8"-16 x 3"	0.90

* Select ACA's by height of plank grating.

Assembly

1. Align two (2) GRIP STRUT planks side-by-side on I-Beam or other anchoring cross-member.
2. Place J-bolts in GRIP STRUT openings opposite each other. Make sure you choose the openings nearest to the inner edge of the plank.
3. Slide ACA anchor plate up J-bolts until snug. Make sure the inside edge of the ACA anchor plate is as close as possible to the center of the cross member.
4. Tighten nuts until planks are secured.
5. Test for movement or slippage. If GRIP STRUT planks are not secure, check fastening system for loose or missing parts. Repeat steps 1 thru 4.

Note: Do not walk on GRIP STRUT planks if they are not secure. Serious injury could result.

Welding

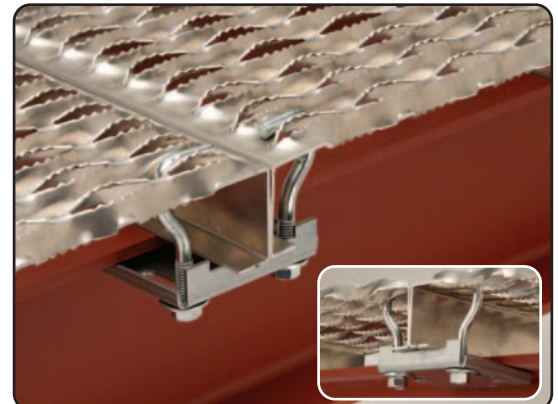
A common method of fastening safety grating is welding. It is recommended that all Cooper B-Line Safety Grating products be fillet welded per AWS D1.3. For more information, consult Technical Services.

Configurations are for reference only. Consult product catalog for available size, material, and finish.

GRIP STRUT Available Configurations		
Side Channels Available	Gauge & Type Available	Product Widths Available
1 1/2", 2", 2 1/2", 3", 4 1/2" (Walkway)	12 Ga. or 14 Ga. Galvanized Steel 0.080 or 0.100 Aluminum 5052-H32 **16 Ga. Type 304 Stainless Steel	4 3/4", 7", 9 1/2", 11 3/4", 18 3/4", 24"

- Standard Lengths - 10' & 20'
- Plain HRP&O Steel available upon request and special quotation.
- Type 316 Stainless Steel available upon special quote.
- Special fabrication cutting or specialty configurations available upon request and special quotation.

** Note: Stainless only available in plank form.



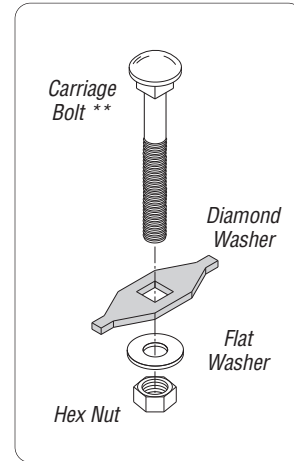
Diamond Washer



Field drilling is required.

Diamond Washer		
UPC Number	Catalog Number	Wt./Ea.
66251626610	12262	0.03

** Plank carriage bolt lengths = Side Channel Height + 1"
Walkway carriage bolt = 5/16"-18 x 2"



Part Number Includes

(1) Diamond Washer

Order Separately

(1) 5/16"-18 Carriage Bolt **
(1) 5/16" Flat Washer
(1) 5/16"-18 Hex Nut

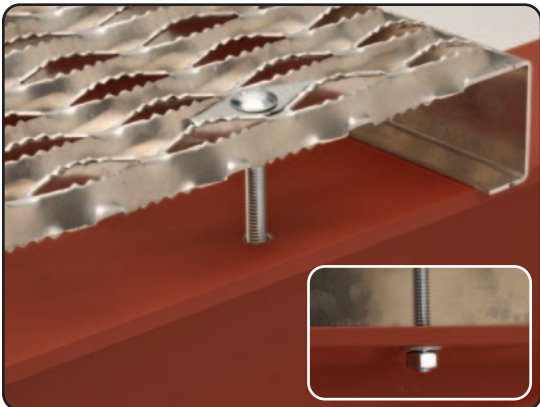
Assembly

1. Align GRIP STRUT plank on I-Beam or other anchoring cross-member.
2. Mark the I-Beam for drilling purposes under a slot near the end of GRIP STRUT plank. Drill a pilot hole.
3. Remove GRIP STRUT plank and drill a finish hole.
4. Replace GRIP STRUT plank. Align diamond washer over the drilled hole. Run the carriage bolt through the diamond washer and I-Beam. Tighten the washer and nut until secure.
5. Test for movement or slippage. If GRIP STRUT planks are not secure, check fastening system for loose or missing parts. Repeat steps 1 thru 4.

Note: Do not walk on GRIP STRUT planks if they are not secure. Serious injury could result.

Welding

A common method of fastening safety grating is welding. It is recommended that all Cooper B-Line Safety Grating products be fillet welded per AWS D1.3. For more information, consult Technical Services.



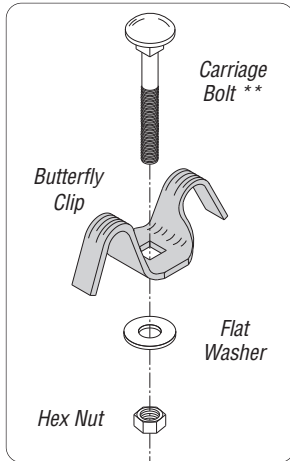
Configurations are for reference only. Consult product catalog for available size, material, and finish.

GRIP STRUT Available Configurations		
Side Channels Available	Gauge & Type Available	Product Widths Available
1 1/2", 2", 2 1/2", 3", 4 1/2" (Walkway)	12 Ga. or 14 Ga. Galvanized Steel 0.080 or 0.100 Aluminum 5052-H32 * 16 Ga. Type 304 Stainless Steel	4 3/4", 7", 9 1/2", 11 3/4", 18 3/4", 24"

- Standard Lengths - 10' & 20'
- Plain HRP&O Steel available upon request and special quotation.
- Type 316 Stainless Steel available upon special quote.
- Special fabrication cutting or specialty configurations available upon request and special quotation.

* Note: Stainless only available in plank form.

Heavy Duty Butterfly Clip



Part Number Includes
(1) Butterfly Clip

Order Separately
(1) 3/8"-16 Carriage Bolt **
(1) 3/8" Flat Washer
(1) 3/8"-16 Hex Nut

Field drilling is required.

Butterfly Clip		
UPC Number	Catalog Number	Wt./Ea.
66251626561	H-BC-10	0.10

** Plank carriage bolt lengths = Side Channel Height + 1"
Walkway carriage bolt = 3/8"-16 x 2"

Assembly

1. Align Heavy Duty GRIP STRUT planks on I-Beam or other anchoring cross-member.
2. Mark the I-Beam for drilling purposes under the first slot nearest the end of the Heavy Duty GRIP STRUT plank. Drill a pilot hole.
3. Remove Heavy Duty GRIP STRUT plank and drill a finish hole.
4. Replace Heavy Duty GRIP STRUT plank to its original position. Place butterfly clip in Heavy Duty GRIP STRUT plank over drilled hole. Run bolt through butterfly clip and drilled hole. Tighten with washer and nut until secure.
5. Test for movement or slippage. If Heavy Duty GRIP STRUT planks are not secure, check fastening system for loose or missing parts. Repeat steps 1 thru 4.

Note: Do not walk on Heavy Duty GRIP STRUT planks if they are not secure. Serious injury could result.

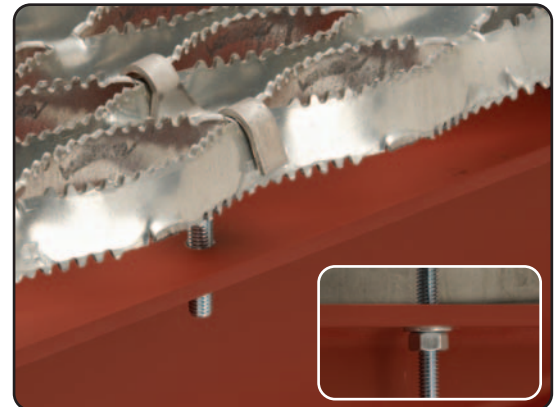
Welding

A common method of fastening safety grating is welding. It is recommended that all Cooper B-Line Safety Grating products be fillet welded per AWS D1.3. For more information, consult Technical Services.

Configurations are for reference only. Consult product catalog for available size, material, and finish.

Heavy Duty GRIP STRUT Available Configurations		
Side Channels Available	Gauge & Type Available	Product Widths Available
2", 2 1/2", 3", 4", 5" (Walkway)	11 Ga., 10 Ga., or 9 Ga. Galvanized Steel	9 1/4", 13 3/4", 23 1/4" 27 3/4", 36" (Walkway) 24", 30", 36"

- Standard Lengths - 10', 12" & 24'
- Plain HRP&O Steel available upon request and special quotation.
- Hot dip galvanized after fabrication is available upon request and special quote.
- Special fabrication cutting or specialty configurations available upon request and special quotation.



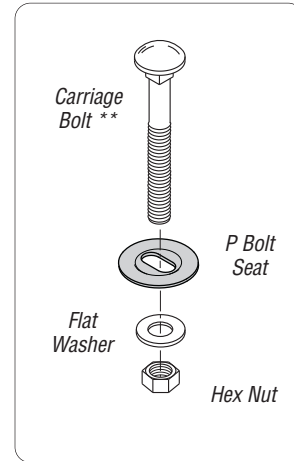
Bolt Washer Seat



Field drilling is required.

Bolt Washer Seat (P Bolt Seat)		
UPC Number	Catalog Number	Wt./Ea.
66251626616	PBOLTSEAT	0.10

** Plank carriage bolt lengths = Side Channel Height + 1"
Walkway carriage bolt = 5/16"-18 x 2"



Part Number Includes

(1) Bolt Washer Seat (PBOLTSEAT)

Order Separately

- (1) 3/8"-16 Carriage Bolt **
- (1) 3/8" Flat Washer
- (1) 3/8"-16 Hex Nut

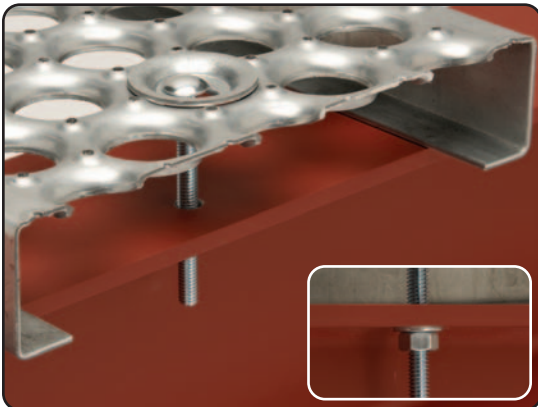
Assembly

1. Align PERF-O-GRIP planks on I-Beam or other anchoring cross-member.
2. Mark the I-Beam for drilling purposes under the PERF-O-GRIP hole nearest the end. Drill a pilot hole.
3. Remove PERF-O-GRIP plank and drill a finish hole.
4. Replace PERF-O-GRIP plank to its original position. Place bolt seat in the PERF-O-GRIP hole which is now lined up with the drilled hole.
5. Run the carriage bolt through the bolt seat, PERF-O-GRIP and I-Beam, and tighten with washer and nut until secure.
6. Test for movement or slippage. If PERF-O-GRIP planks are not secure, check fastening system for loose or missing parts. Repeat steps 1 thru 5.

Note: Do not walk on PERF-O-GRIP planks if they are not secure. Serious injury could result.

Welding

A common method of fastening safety grating is welding. It is recommended that all Cooper B-Line Safety Grating products be fillet welded per AWS D1.3. For more information, consult Technical Services.

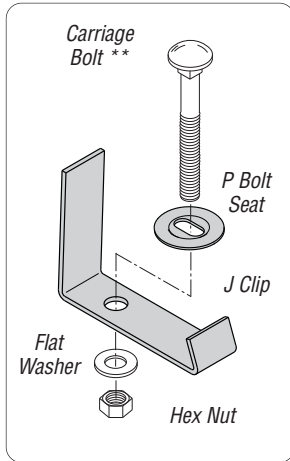


Configurations are for reference only. Consult product catalog for available size, material, and finish.

PERF-O-GRIP Available Configurations		
Side Channels Available	Gauge & Type Available	Product Widths Available
1 1/2", 2", 3", 5" (Walkway)	11 Ga. or 13 Ga. Galvanized Steel 0.125 Aluminum 5052-H32	5", 7", 10" 18", 24", 30", 36" (Walkway)

- Standard Lengths - 10' & 12'
- Plain HRP&O Steel & Aluminum available upon request and special quotation.
- Hot dip galvanized after fabrication is available upon request and special quotation.
- Special fabrication, cutting or specialty configurations available upon request and special quotation.

Seated J-Clip



Part Number Includes
(1) J-Clip & (1) P Bolt Seat

Order Separately
(1) 3/8"-16 Carriage Bolt **
(1) 3/8" Flat Washer
(1) 3/8"-16 Hex Nut



Field drilling may be required.

Seated J-Clip		
UPC Number	Catalog Number	Wt./Ea.
78205153667	JCLIP	0.30

** Plank carriage bolt lengths = Side Channel Height + 1"
Walkway carriage bolt = 3/8"-16 x 2"

Assembly

1. Align PERF-O-GRIP planks on I-Beam or other anchoring cross-member.
2. Place bolt seat on center hole of PERF-O-GRIP nearest the overhanging end.
3. Align J-Clip below PERF-O-GRIP plank so that the carriage bolt can slide through. Make sure the lower lip of the J-Clip reaches well into the I-Beam.
4. Run the carriage bolt through the bolt seat to the J-Clip and tighten securely with the washer and nut.
5. Test for movement or slippage. If PERF-O-GRIP planks are not secure, check fastening system for loose or missing parts. Repeat steps 1 thru 4.

Note: Do not walk on PERF-O-GRIP planks if they are not secure. Serious injury could result.

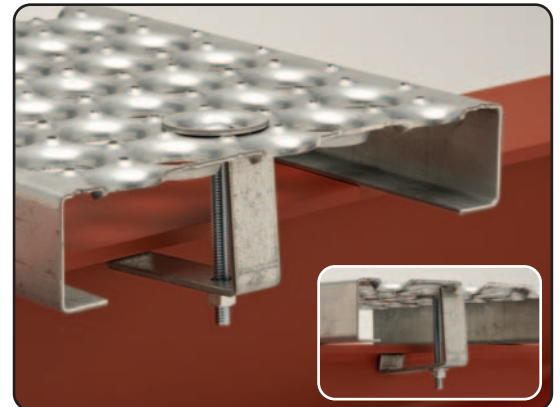
Welding

A common method of fastening safety grating is welding. It is recommended that all Cooper B-Line Safety Grating products be fillet welded per AWS D1.3. For more information, consult Technical Services.

Configurations are for reference only. Consult product catalog for available size, material, and finish.

PERF-O-GRIP Available Configurations		
Side Channels Available	Gauge & Type Available	Product Widths Available
1 1/2", 2", 3", 5" (Walkway)	11 Ga. or 13 Ga. Galvanized Steel 0.125 Aluminum 5052-H32	5", 7", 10" 18", 24", 30", 36" (Walkway)

- Standard Lengths - 10' & 12'
- Plain HRP&O Steel & Aluminum available upon request and special quotation.
- Hot dip galvanized after fabrication is available upon request and special quotation.
- Special fabrication, cutting or specialty configurations available upon request and special quotation.



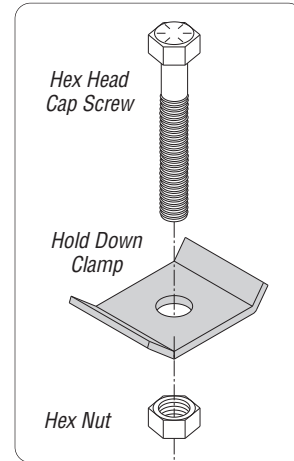
Hold Down Clamp



Field drilling is required.

Hold Down Clamp		
UPC Number	Catalog Number	Wt./Ea.
66251641905	RTM-SW	0.04

** Hex Head Cap Screw lengths = Side Channel Height + 1"



Part Number Includes

(1) Hold Down Clamp

Order Separately

(1) 5/16"-18 HHCS **

(1) 5/16" Flat Washer

(1) 5/16"-18 Hex Nut

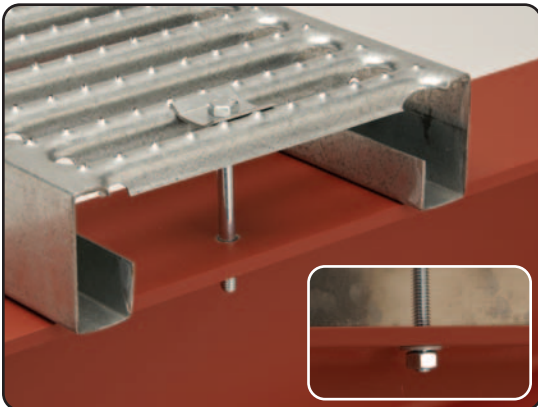
Assembly

1. Align GRATE-LOCK plank on I-Beam or other anchoring cross-member.
2. Mark the I-Beam for drilling purposes near the outer edges of GRATE-LOCK plank. Drill a pilot hole.
3. Remove GRATE-LOCK plank and drill a finish hole.
4. Replace GRATE-LOCK plank to its original position. Place the hold down clamp in slot GRATE-LOCK plank, which is now over the drilled hole. Make sure the hold down clamp and drilled hole line up.
5. Run cap screw through the hold down clamp, GRATE-LOCK plank, and I-Beam. Tighten with washer and nut until secure.
6. Test for movement or slippage. If GRATE-LOCK planks are not secure, check fastening system for loose or missing parts. Repeat steps 1 thru 5.

Note: Do not walk on GRATE-LOCK planks if they are not secure. Serious injury could result.

Welding

A common method of fastening safety grating is welding. It is recommended that all Cooper B-Line Safety Grating products be fillet welded per AWS D1.3. For more information, consult Technical Services.

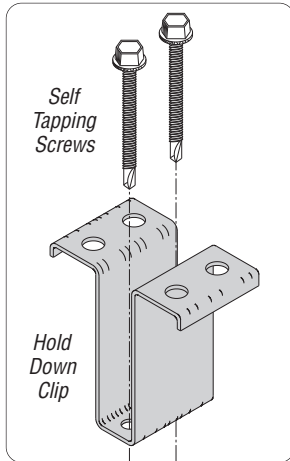


Configurations are for reference only. Consult product catalog for available size, material, and finish.

GRATE-LOCK Available Configurations		
Side Channels Available	Gauge & Type Available	Product Widths Available
1 1/2"	18 Ga. Galvanized Steel	3" (Solid Filler)
2 1/2", 3", 4",	16 Ga. or 14 Ga. Galvanized Steel	6", 9", 12"

- Standard Lengths - 12', 20" & 24'
- Side Channels in Male/Female (MF) or Male/Male (MM) configuration.
- Surface in smooth (MS) or gripping (MG) configuration.
- Special fabrication, cutting or specialty configurations available upon request and special quotation.

Hold Down Clip



Part Number Includes
(1) Hold Down Clip

Order Separately
(2) 1/4" Self Tapping Screws



Field drilling may be required.

Hold Down Clip			
UPC Number	Catalog Number	Plank Height	Wt./Ea.
66251626549	M-HC-15	1 1/2"	0.10
66251626550	M-HC-25	2 1/2"	0.20
66251626551	M-HC-30	3"	0.20
66251626552	M-HC-40	4"	0.30

Assembly

1. Align GRATE-LOCK planks on I-Beam or other anchoring cross-member.
2. Mark the I-Beam for drilling purposes under the second or third slot from the end of the GRATE-LOCK plank. Drill pilot holes.
3. Remove GRATE-LOCK plank and drill finish holes.
4. Replace GRATE-LOCK plank to its original position. Align hold down clip over the drilled holes. Make sure the top of the hold down clip attaches firmly to the ridges of the GRATE-LOCK plank.
5. Tighten screws until snug.
6. Test for movement or slippage. If GRATE-LOCK planks are not secure, check fastening system for loose or missing parts. Repeat steps 1 thru 5.

Note: Do not walk on GRATE-LOCK planks if they are not secure. Serious injury could result.

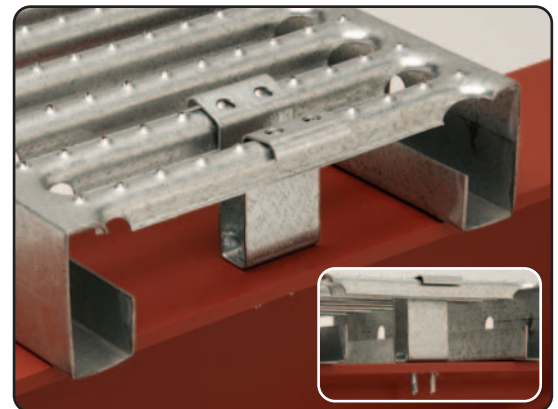
Welding

A common method of fastening safety grating is welding. It is recommended that all Cooper B-Line Safety Grating products be fillet welded per AWS D1.3. For more information, consult Technical Services.

Configurations are for reference only. Consult product catalog for available size, material, and finish.

GRATE-LOCK Available Configurations		
Side Channels Available	Gauge & Type Available	Product Widths Available
1 1/2"	18 Ga. Galvanized Steel	3" (Solid Filler)
2 1/2", 3", 4"	16 Ga. or 14 Ga. Galvanized Steel	6", 9", 12"

- Standard Lengths - 12', 20" & 24'
- Side Channels in Male/Female (MF) or Male/Male (MM) configuration.
- Surface in smooth (MS) or gripping (MG) configuration.
- Special fabrication, cutting or specialty configurations available upon request and special quotation.

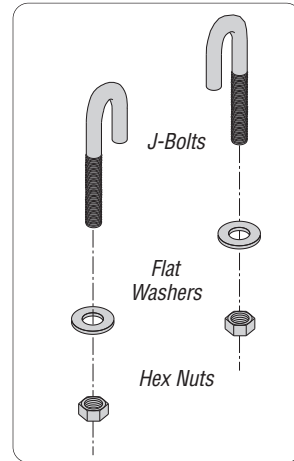


Anchor J-Bolts



Field drilling is required.

Anchor J-Bolts		
UPC Number	Catalog Number	Wt./Ea.
66251640737	M-250-J	0.10



Part Number Includes
 (2) 5/16"-18 x 2 13/16" J-Bolts
 (2) 5/16" Flat Washers
 (2) 5/16"-18 Hex Nuts

Assembly

1. Align GRATE-LOCK plank on I-Beam or other anchoring cross-member.
2. Mark the I-Beam for drilling purposes near the outer edges of GRATE-LOCK plank. Drill pilot holes.
3. Remove GRATE-LOCK plank and drill finish holes.
4. Replace GRATE-LOCK plank to its original position. Place the threaded end of the J-Bolts into drilled holes. Place the 'J' end of the J-Bolt in the gutters along each edge of the GRATE-LOCK plank. Tighten the washer and nut until secure.
5. Test for movement or slippage. If GRATE-LOCK planks are not secure, check fastening system for loose or missing parts. Repeat steps 1 thru 4.

Note: Do not walk on GRATE-LOCK planks if they are not secure. Serious injury could result.

Welding

A common method of fastening safety grating is welding. It is recommended that all Cooper B-Line Safety Grating products be fillet welded per AWS D1.3. For more information, consult Technical Services.

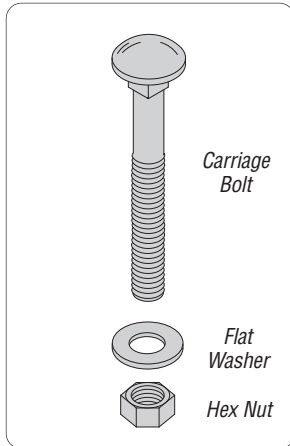


Configurations are for reference only. Consult product catalog for available size, material, and finish.

GRATE-LOCK Available Configurations		
Side Channels Available	Gauge & Type Available	Product Widths Available
1 1/2"	18 Ga. Galvanized Steel	3" (Solid Filler)
2 1/2", 3", 4"	16 Ga. or 14 Ga. Galvanized Steel	6", 9", 12"

- Standard Lengths - 12', 20" & 24'
- Side Channels in Male/Female (MF) or Male/Male (MM) configuration.
- Surface in smooth (MS) or gripping (MG) configuration.
- Special fabrication, cutting or specialty configurations available upon request and special quotation.

Carriage Bolt, Flat Washer, & Hex Nut



Order Separately
 (1) 3/8"-16 Carriage Bolt **
 (1) 3/8" Flat Washer
 (1) 3/8"-16 Hex Nut

Field drilling is required.

** Plank carriage bolt lengths = Side Channel Height + 1"

Assembly

1. Align TRACTION-TREAD planks on I-Beam or other anchoring cross-member.
2. Mark the I-Beam for drilling purposes under the third or fourth hole from the end of the TRACTION-TREAD plank. Drill a pilot hole.
3. Remove TRACTION-TREAD plank and drill a finish hole.
4. Drill out the hole in TRACTION-TREAD plank.
5. Replace TRACTION-TREAD plank to its original position. Run bolt through TRACTION-TREAD plank and I-Beam. Tighten with washer and nut until secure.
6. Test for movement or slippage. If TRACTION-TREAD planks are not secure, check fastening system for loose or missing parts. Repeat steps 1 thru 5.

Note: Do not walk on TRACTION-TREAD planks if they are not secure. Serious injury could result.

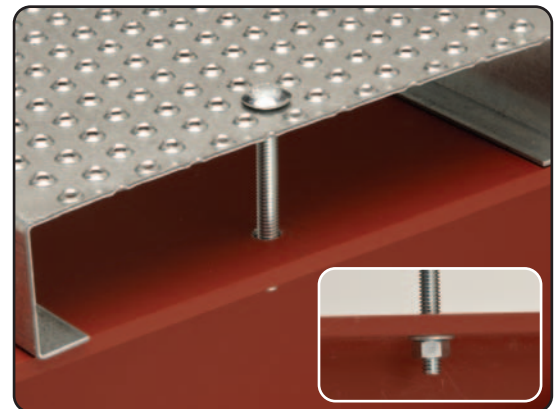
Welding

A common method of fastening safety grating is welding. It is recommended that all Cooper B-Line Safety Grating products be fillet welded per AWS D1.3. For more information, consult Technical Services.

Configurations are for reference only. Consult product catalog for available size, material, and finish.

TRACTION-TREAD Available Configurations			
Product	Channel Heights	Gauge & Material	Widths
Sheet	N/A	11 Ga., 12 Ga. or 13 Ga. HRP&O Steel 0.125 Aluminum 5052-H32	36"
Planks	2", 1 1/2" (Minimum)	11 Ga., 12 Ga. or 13 Ga. HRP&O Steel or Pre-Galvanized Steel 0.125 Aluminum 5052-H32	7", 10", 12"
Ladder Rungs	1 1/2"	11 Ga., or 12 Ga. or HRP&O Steel	1 1/4"
	1 1/8"	13 Ga. or HRP&O Steel	1 5/8"
	1 1/2"	0.125 Aluminum 5052-H32	2 1/4"

- Sheet Length - 10' (120")
- Plank Lengths - 10' & 12'
- Ladder Rung Length - 60"
- Special fabrication, cutting or specialty configurations available upon request and special quotation.



Global Locations

Cooper B-Line's U.S. Customer Service Center is staffed Monday through Friday from 7 a.m. to 5:00 p.m. Central Standard Time. If a situation requires that you have to contact us after hours, please leave a message via phone or E-mail so we can give it immediate attention the following business day.

Service Facility - United States:
Cooper B-Line - USA
509 West Monroe Street
Highland, IL 62249
United States
Phone: (800) 851-7415
Fax: (800) 356-1438
Email: blineus@cooperindustries.com

Service Facility - Canada:
Cooper B-Line - Canada
Div. of Cooper Ind. Canada, Inc.
5925 McLaughlin Road
Mississauga, ON L5R 1B8
Canada
Phone: (800) 569-3660
Fax: (888) 753-3355
Email: blinecanada@cooperindustries.com

Service Facility - Europe:
Cooper B-Line, Ltd. - UK
Walrow, Highbridge
Somerset, TA9 4AQ
United Kingdom
Phone: + 44 (0) 1278 783371
Fax: + 44 (0) 1278 789037
Email: sales@cooperbline.co.uk

Cooper B-Line - Saudia Arabia:
PO Box 70160 - Al Khobar - 31952
Kingdom of Saudia Arabia
Phone: 00966 3 812 2236
Fax: 00966 3 812 1291
Email: blineme@cooperindustries.com

Literature Fulfillment Questions:
Phone: (314) 426-1800
Fax: (314) 426-6022
Email: cooperbline@repcographics.com

Request Literature Website:
<http://order.repcographics.com/cooperb/>

U.S. Customer Service

Cooper B-Line
509 West Monroe Street
Highland, IL 62249
Phone: 800-851-9341
Fax: 770-268-7213