

**COOPER B-Line**



EnviroSHIELD



**New EnviroShield™ Electrical Enclosures.
Because Nature Can Be One Tough Mother.**

A quick reference guide to the Enviro Shield product line—designed from the ground up to provide the best protection of critical electrical controls and instruments in harsh environments.



New EnviroShield™ Electrical Enclosures.

Enviro Shield Free-Standing Enclosures

Houses electrical controls and electrical instruments in harsh environments

Provides quick & easy access indoors or out

Protects against rain, sleet, ice, dirt, circulating dust, and dripping, splashing or hose-directed non-corrosive liquids

Rack mounting angles—and a full line of back and side mounting panels are available for all of your configuration needs

Enviro Shield Enclosures give you the features you need to keep nature at bay:

Enclosures slope from front to back channeling liquids away from access doors

Enclosures and doors are fabricated from heavy gauge sheet steel

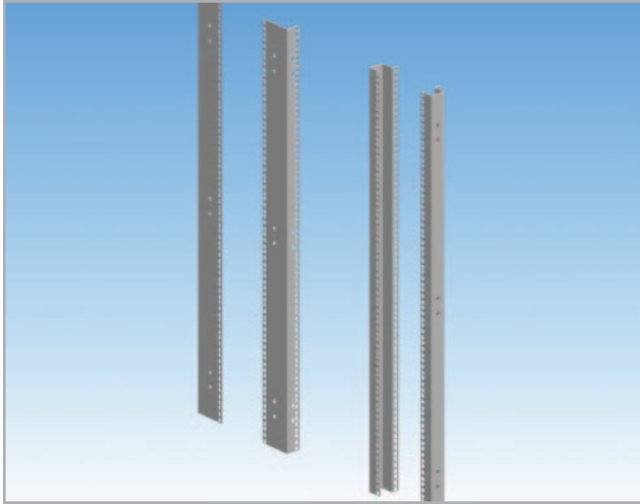
All seams are continuously welded and finished smooth

Large lifting eyes are integrated with sides of enclosure

Available in 304, 316 stainless steel or powder coat finish

Enclosure Sizes: Range from 604812 to 727224





Rack Mounting Angles

"L" and "U" shaped rack mounting angles are available for mounting 19" or 23" rack mounted equipment.



Swing-Out Rack Mounted Frame

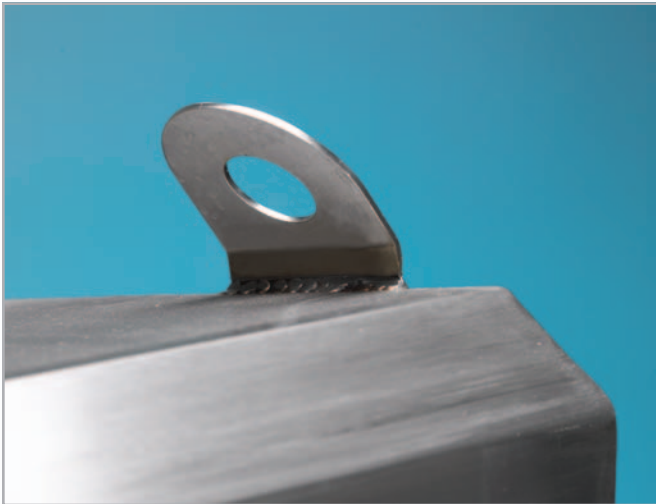
Heavy Duty Swing-Out Rack Mounting Frames are designed for mounting 19" (482mm) equipment in Enviro Shield Enclosures.

Fully- welded construction

Powder Coat Finish



Sanitary Leg Kits allow space between enclosure and floor for compliance is NSF environments. 1 3/4" (44mm) adjustment provides flexibility in all applications. Four (4) legs per kit.



Strong, durable and dependable construction includes integrated lifting eyes



Concealed lift-off hinges allow for easy removal and re-attachment of doors



Extreme environments call for extreme protection. Put the quality, durability and versatility of Enviro Shield Electrical Enclosures to work for you in harsh interior and exterior situations.

For more information, call 1-800-851-7415 or visit our website at www.cooperbline.com

