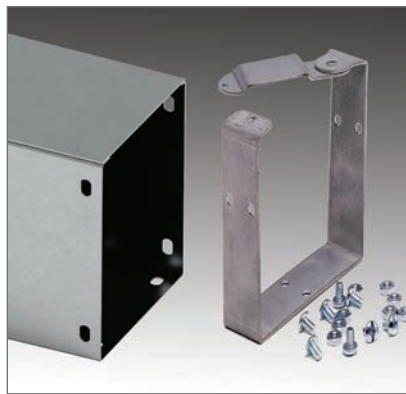


Quick-Connect method vs. traditional wireway connector time study

Tests conclude the B-Line series Quick-Connect method is the efficient choice to help increase hinge cover wireway installation productivity.



Quick-Connect Method

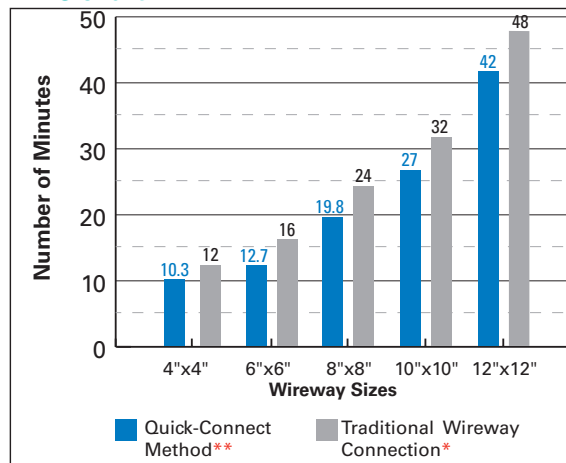


Traditional Wireway Connection

Testing methods

- 1 RSMean data was collected to determine the installation time.
- 2 Number of installers required to install various sizes of traditional wireway were determined.
- 3 Time studies were conducted to determine the time required to install hinge cover wireway utilizing the Quick-Connect method.

Time chart*



* "Electrical Cost Data" RSMean

** RSMean Number of Installers:
4" x 4" = 1 installer, all other sizes noted = 2 installers.

Savings calculation using Quick-Connect wireway systems

Labor \$/Piece	Labor % Savings+	Savings \$/Piece	Savings \$/100 Pieces
10.3	14.2	1.70	170
25.4	20.6	6.60	660
39.6	17.5	8.40	840
54.0	15.6	10.00	1000
84.0	12.5	12.00	1200

+ The time saved using the Quick-Connect method was subtracted from the RSMean data. The savings in % labor, (\$) per piece, and (\$) per hundred pieces was calculated to provide an estimate of total installed cost savings.



Eaton
1000 Eaton Boulevard
Cleveland, OH 44122
United States
Eaton.com

B-Line Division
509 West Monroe Street
Highland, IL 62249
United States
Phone: 800-851-7415
www.cooperline.com/enclosures

© 2015 Eaton
All Rights Reserved
Printed in USA
Publication No. SA301006EN
December 2015 WWTEST

Follow us on social media to get the latest product and support information.



Eaton is a registered trademark.

All other trademarks are property of their respective owners.