

New Product

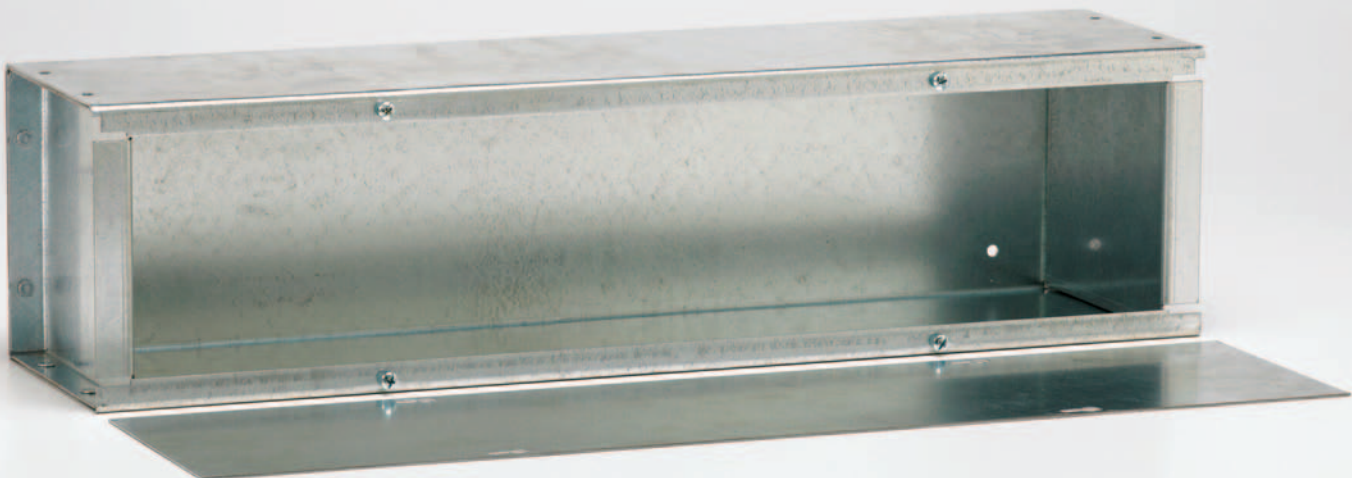


Enclosures

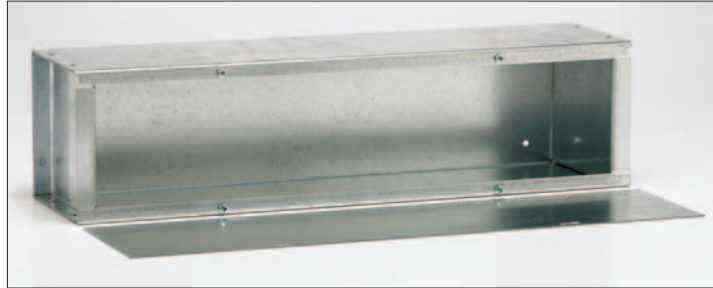
NEMA Type 1 Wiring Trough

ENCN1T-08

COOPER B-Line



NEMA Type 1 Wiring Trough - Data Sheet



Application

- Used for indoor cable and wire junction, distribution, and termination applications where dirt, dust, oil, and water are not serious problems

Features

- Shipped complete with permanently connected ends
- Keyhole slots on the trough cover allow removal of cover without removing screws

Construction

- Fabricated from code gauge galvanized steel (see table)
- No knockouts
- Mounting holes on the back of the trough body
- Plated screws secure the cover to the body

Finish

- Galvanized steel

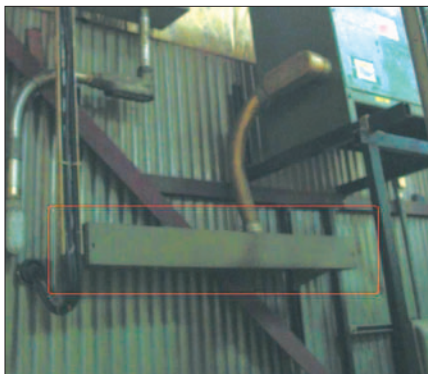
Standards

- UL 870 listed, Type 1
- CSA C22.2 No. 26 certified, Type 1
- Conforms to NEMA standard for Type 1
- IEC 60529, IP30

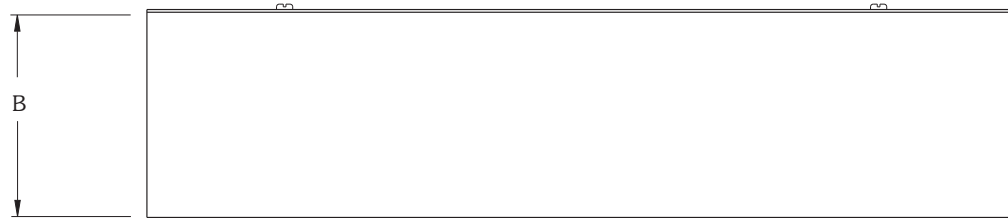
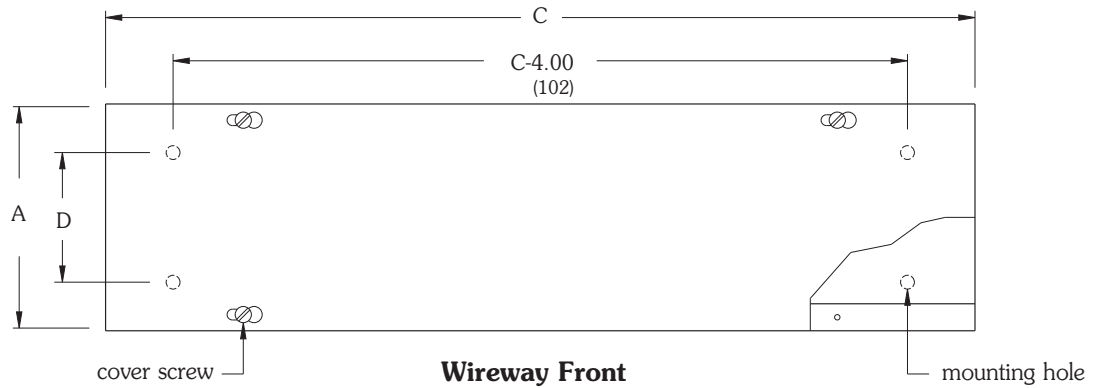
Service

- SD Code = Service Delivery Code
 - A = 1-2 days
 - B = 2-5 days
 - C = 5-10 days
 - D = 10-15 days
 - E = 15-20 days
- (S) Items likely to be available from stock

Applications Photos



NEMA Type 1 Wiring Trough - Data Sheet



Wireway Side

Dimensional Data

UPC Number	Catalog Number	Height x Width x Depth A x B x C in.	D in.	Gauge	List Price s	SD Code
78205147173	4412 GTGV NK	4.00x4.00x12.00	2.75	16	24.67	C
78205147177	4424 GTGV NK (s)	4.00x4.00x24.00	2.75	16	43.43	A
78205147179	4436 GTGV NK (s)	4.00x4.00x36.00	2.75	16	59.06	A
78205147181	4448 GTGV NK (s)	4.00x4.00x48.00	2.75	16	74.65	A
78205147182	4460 GTGV NK (s)	4.00x4.00x60.00	2.75	16	78.73	A
78205147224	4472 GTGV NK	4.00x4.00x72.00	2.75	16	90.16	D
78205147225	6612 GTGV NK	6.00x6.00x12.00	4.25	16	41.76	D
78205147226	6624 GTGV NK (s)	6.00x6.00x24.00	4.25	16	60.04	A
78205147227	6636 GTGV NK (s)	6.00x6.00x36.00	4.25	16	84.95	A
78205147228	6648 GTGV NK (s)	6.00x6.00x48.00	4.25	16	109.00	A
78205147229	6660 GTGV NK (s)	6.00x6.00x60.00	4.25	16	117.20	A
78205147230	6672 GTGV NK	6.00x6.00x72.00	4.25	16	141.50	C
78205147231	8824 GTGV NK	8.00x8.00x24.00	6.00	14	101.80	C
78205147232	8836 GTGV NK	8.00x8.00x36.00	6.00	14	139.30	C
78205147233	8848 GTGV NK	8.00x8.00x48.00	6.00	14	182.60	C
78205147234	8860 GTGV NK (s)	8.00x8.00x60.00	6.00	14	214.90	A
78205147236	8872 GTGV NK	8.00x8.00x72.00	6.00	14	254.70	C
78205147238	101048 GTGV NK	10.00x10.00x48.00	8.00	14	275.80	E
78205147239	121224 GTGV NK	12.00x12.00x24.00	10.00	14	223.50	E
78205147240	121236 GTGV NK	12.00x12.00x36.00	10.00	14	297.60	E
78205147241	121248 GTGV NK	12.00x12.00x48.00	10.00	14	329.01	E

(S) Items likely to be available from stock • SD Code = Service Delivery Code

Other Cooper B-Line Product Lines

Strut Systems (Bolted Framing)
Cable Tray Systems
Electrical Enclosures
Electronic Enclosures
Pipe Hanger & Support Systems
Spring Steel Fasteners
Cable Runway & Relay Racks (CommData)
Meter Mounting & Distribution Equipment
Anchors

ENCN1T-08

Cooper B-Line

509 West Monroe Street
Highland, IL 62249
Phone: 800-851-7415
Fax: 618-654-1917

www.cooperbline.com



SYSTEMS THAT MAKE SENSE

Cooper Industries, Ltd.
600 Travis, Ste. 5800
Houston, TX 77002-1001
Phone: 713-209-8400
www.cooperindustries.com