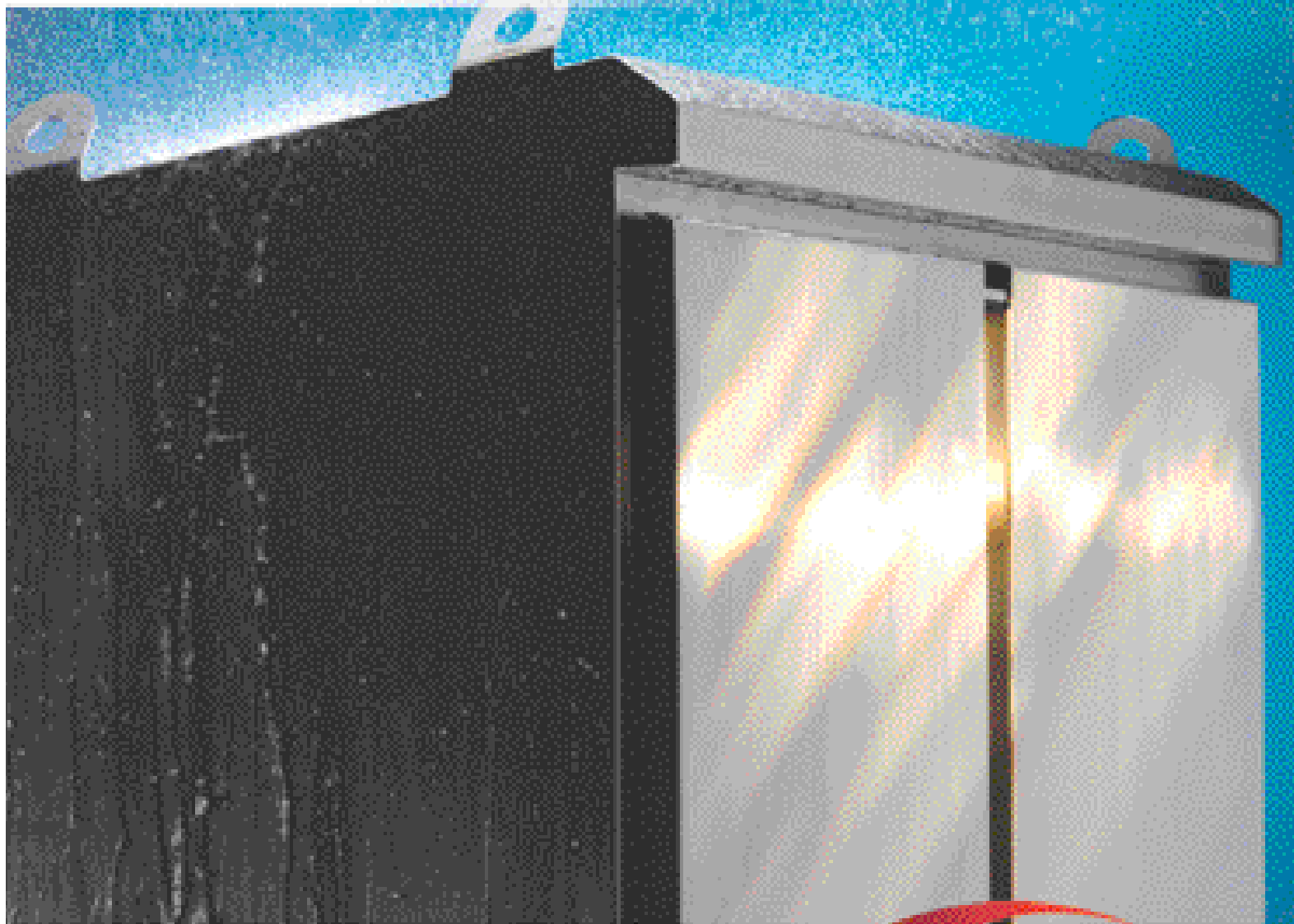
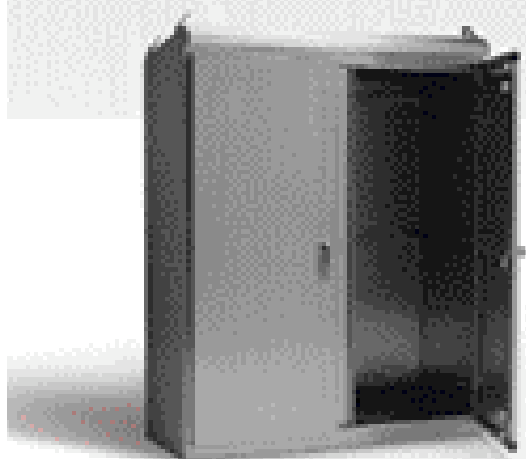




COOPER B-Line



EnviroSHIELD



The Name Says It All!

Cooper B-Line Introduces an innovative new “cabinet” to provide protection through some of mother nature’s worst days.

The EnviroShield line provide the most complete and thorough wet environment protection in the industry.

Take Mother Nature on . . . Try B-Line’s NEW EnviroShield line!



EnviroSHIELD

New EnviroShield™ Electrical Enclosures.

Because Nature Can Be One Tough Mother.

Inside and out, our new EnviroShield Electrical Enclosures deliver the best protection of critical electrical controls and instruments in harsh environments. And for Industrial Furnace, PetroChem, Pulp & Paper, and Water Treatment industry applications—you'll need all the protection you can get.

**COOPER B-Line**

EnviroShield Enclosures give you the features you need to keep nature at bay:

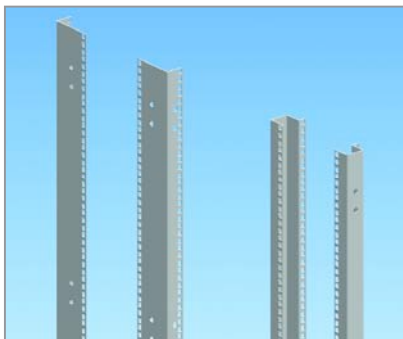
Enclosures slope from front to back channeling liquids away from access doors. Protects against rain, sleet, ice, dirt, circulating dust, and dripping, splashing or hose-directed non-corrosive liquids.

Provides quick & easy access indoors and out

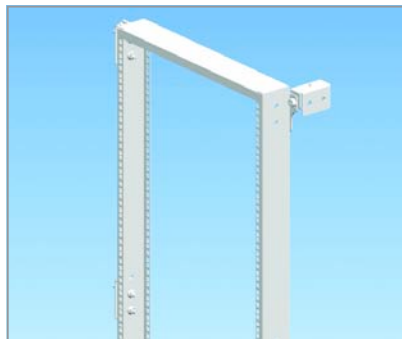
Enclosure & doors are fabricated from 12 gauge stainless steel

Full line of accessories for application customization

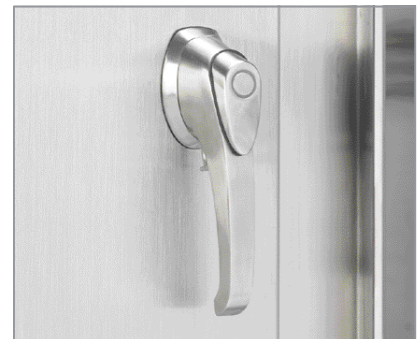
Extreme environments call for extreme protection. Put the quality, durability and versatility of EnviroShield Electrical Enclosures to work for you in harsh interior and exterior situations.



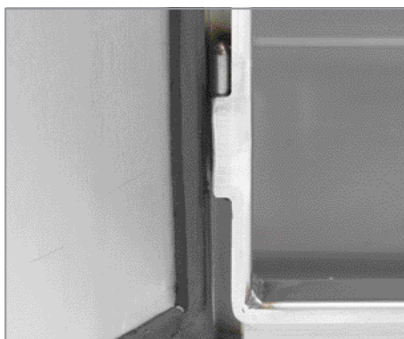
Rack Mounting Angles



**Swing-Out Rack Mounted Frame
Fully-Welded Construction**



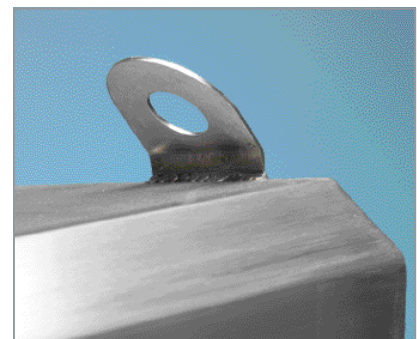
Security and Easy Access



Concealed lift-off hinges allow for easy removal and re-attachment of doors



Wide variety of accessories for custom needs.



Strong, durable and dependable construction includes integrated lifting eyes



Enviro Shield Free-Standing Enclosures

Data Sheet



Application

- Houses electrical controls and electrical instruments in harsh environments
- Provides quick and easy access indoors and out
- Protects against circulating dust, falling dirt, dripping noncorrosive liquids, rain, sleet, ice, splashing and hose directed water

Standards

- UL 508 listed, Type 12, Type 3R, Type 4, Type 4X
- Conforms to NEMA standard for Type 12, Type 3R, Type 4, Type 4X
- NSF Criteria C-2

Construction

- Enclosure and door are fabricated from (12) gauge steel
- All continuous welded seams are finished smooth
- Doors are secured to the body with a heavy-duty concealed lift-off hinge and a 3-pt vault handle locking mechanism on each door
- Removable center post
- Doors have a fixed, oil-resistant gasket
- Ground stud provided on doors and bodies
- Print pocket provided
- Large lifting eyes are integrated with sides of enclosure
- Mounting channels are welded inside for locating panels along enclosure depth, as well as mounting studs for fixed panels
- Swing panels, single full and single half panels can be installed in double-door enclosures when the center post is used
- **A variety of optional panels and accessories are available, (see pages 198-202)**

Finish

- Type 4 enclosures have a washed and phosphate undercoat with ANSI 61 gray polyester powder inside and out
- Type 4X enclosures are 304 or 316 stainless steel with a smooth brushed finish

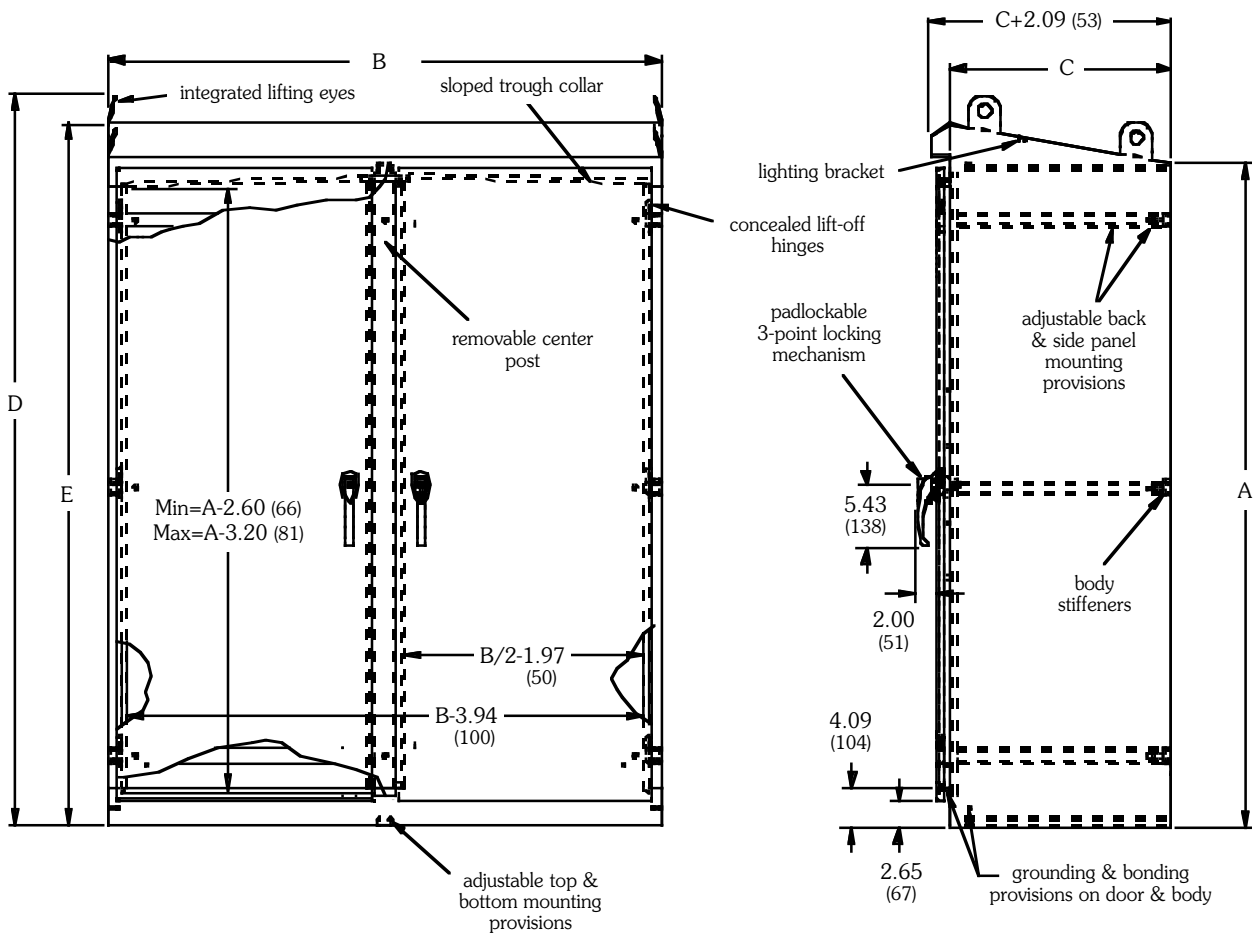
Accessories

- Full and half panels
- Side panels
- Swing panels
- Center post
- Channel mounting hardware
- Touch-up paint
- Climate control
- Mounting legs
- Rack mounting angles
- Swing out mounting frames
- See Accessories section

Enviro Shield Free-Standing Enclosures

Catalog Number

Enclosure			Enclosure Size		D		E	
ANSI 61 Gray Carbon Steel	ANSI 304 Stainless Steel	Type 316L Stainless Steel	Height x Width x Depth A x B x C		in.	mm	in.	mm
	ANSI 304 Stainless Steel	Type 316L Stainless Steel	in.	mm				
ES-604812-4	ES-604812-4XS	ES-604812-4XSS6	60.00 x 48.00 x 12.00	1524 x 1219 x 305	65.98	1676	64.23	1631
ES-604816-4	ES-604816-4XS	ES-604816-4XSS6	60.00 x 48.00 x 16.00	1524 x 1219 x 406	65.98	1676	64.23	1631
ES-604820-4	ES-604820-4XS	ES-604820-4XSS6	60.00 x 48.00 x 20.00	1524 x 1219 x 508	65.98	1676	64.23	1631
ES-604824-4	ES-604824-4XS	ES-604824-4XSS6	60.00 x 48.00 x 24.00	1524 x 1219 x 609	65.98	1676	64.23	1631
ES-606012-4	ES-606012-4XS	ES-606012-4XSS6	60.00 x 60.00 x 12.00	1524 x 1524 x 305	65.98	1676	64.23	1631
ES-606016-4	ES-606016-4XS	ES-606016-4XSS6	60.00 x 60.00 x 16.00	1524 x 1524 x 406	65.98	1676	64.23	1631
ES-606020-4	ES-606020-4XS	ES-606020-4XSS6	60.00 x 60.00 x 20.00	1524 x 1524 x 508	65.98	1676	64.23	1631
ES-606024-4	ES-606024-4XS	ES-606024-4XSS6	60.00 x 60.00 x 24.00	1524 x 1524 x 609	67.46	1713	64.23	1631
ES-726012-4	ES-726012-4XS	ES-726012-4XSS6	72.00 x 60.00 x 12.00	1829 x 1524 x 305	77.98	1980	76.23	1936
ES-726016-4	ES-726016-4XS	ES-726016-4XSS6	72.00 x 60.00 x 16.00	1829 x 1524 x 406	77.98	1980	76.23	1936
ES-726020-4	ES-726020-4XS	ES-726020-4XSS6	72.00 x 60.00 x 20.00	1829 x 1524 x 508	77.98	1980	76.23	1936
ES-726024-4	ES-726024-4XS	ES-726024-4XSS6	72.00 x 60.00 x 24.00	1829 x 1524 x 609	77.98	1980	76.23	1936
ES-727212-4	ES-727212-4XS	ES-727212-4XSS6	72.00 x 72.00 x 12.00	1829 x 1829 x 305	77.98	1980	76.23	1936
ES-727216-4	ES-727216-4XS	ES-727216-4XSS6	72.00 x 72.00 x 16.00	1829 x 1829 x 406	77.98	1980	76.23	1936
ES-727220-4	ES-727220-4XS	ES-727220-4XSS6	72.00 x 72.00 x 20.00	1829 x 1829 x 508	77.98	1980	76.23	1936
ES-727224-4	ES-727224-4XS	ES-727224-4XSS6	72.00 x 72.00 x 24.00	1829 x 1829 x 609	79.46	2018	76.23	1936



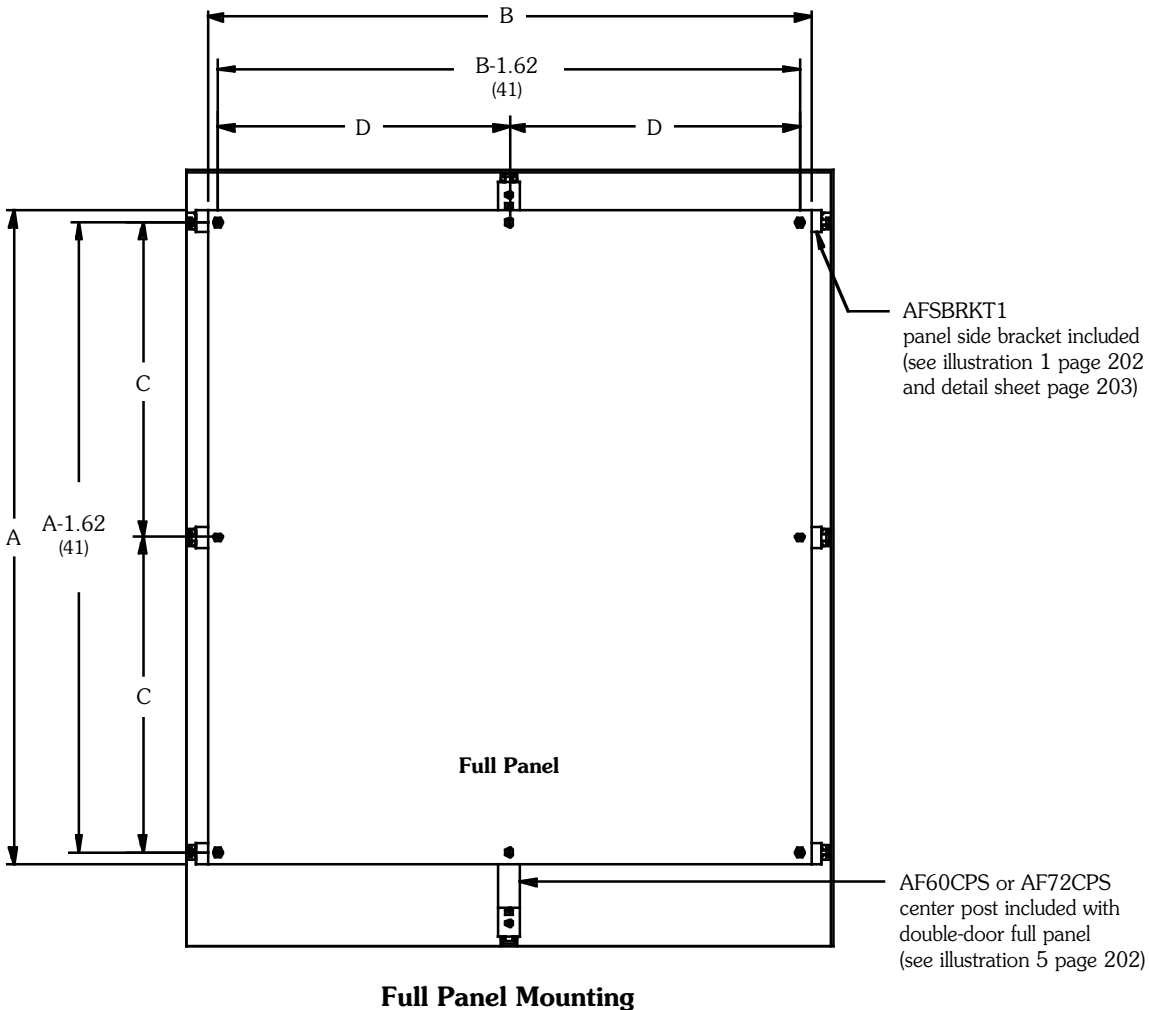
Notes: Dimensions are in inches. Millimeters shown are for reference only. Data subject to change without notice.

Enviro Shield Free-Standing Enclosures

Full Panel Accessories

Catalog Number

Panel Catalog Number	Panel Size Height x Width A x B		C		D		Fits Enclosure Height x Width			
	in.	mm	in.	mm	in.	mm	in.	mm		
AF6048P	47.87	43.87	1216	1114	23.12	587	21.12	530	60.00x48.00	1524x1219
AF6060P	47.87	55.87	1216	1419	23.12	587	27.12	689	60.00x60.00	1524x1524
AF7260P	59.87	55.87	1521	1419	29.12	740	27.12	689	72.00x60.00	1829x1524
AF7272P	59.87	67.87	1521	1724	29.12	740	33.12	841	72.00x72.00	1829x1829



Full Panel Mounting

Note: Full Panel for double-door enclosures are (10) gauge steel and furnished with Panel Brackets, Center Post assembly, panel handle kit and all hardware necessary for channel and panel mounting. The Center Post assembly offers additional support of panel and equipment. Free-standing design permits the panel to adjust along the depth of the enclosure. With dual-access enclosures, Full and Half Panels can be mounted back-to-back.

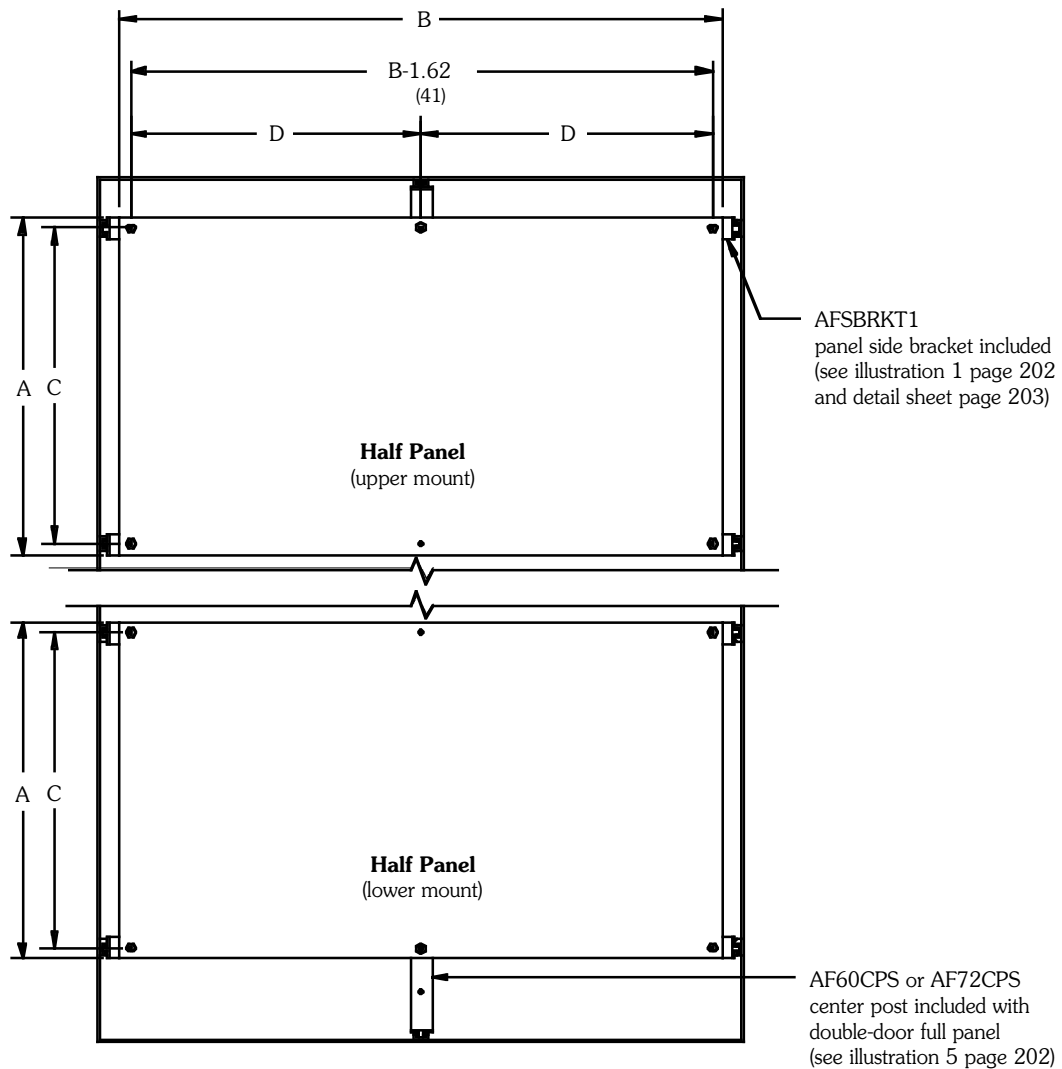
Notes: B-Line Systems can provide special sizes, finishes and other modifications. Consult the factory for your special requirements.

Enviro Shield Free-Standing Enclosures

Half Panel Accessories

Catalog Number

Panel Catalog Number	Panel Size Height x Width A x B		C		D		Fits Enclosure Height x Width	
	in.	mm	in.	mm	in.	mm	in.	mm
	AF6048HP	24.75x43.87	629x1114	23.12	587	21.12	536	60.00x48.00
AF7260HP	30.75x55.87	781x1419	29.12	740	7.12	181	72.00x60.00	1829x1524
AF7272HP	30.75x67.87	781x1724	29.12	740	33.12	841	72.00x72.00	1829x1829



Half Panel Mounting

Note: Half panel for double-door enclosures are (12) gauge steel and furnished with Panel Brackets and all hardware necessary for channel and panel mounting. A **Center Post assembly or a double-door panel support bracket (catalog number AFSUP2) for additional support of the panel is optional and sold separately.** Free-standing design permits the panel to adjust along the depth of the enclosure.

Notes: Dimensions are in inches. Millimeters shown are for reference only. Data subject to change without notice.

Enviro Shield Free-Standing Enclosures

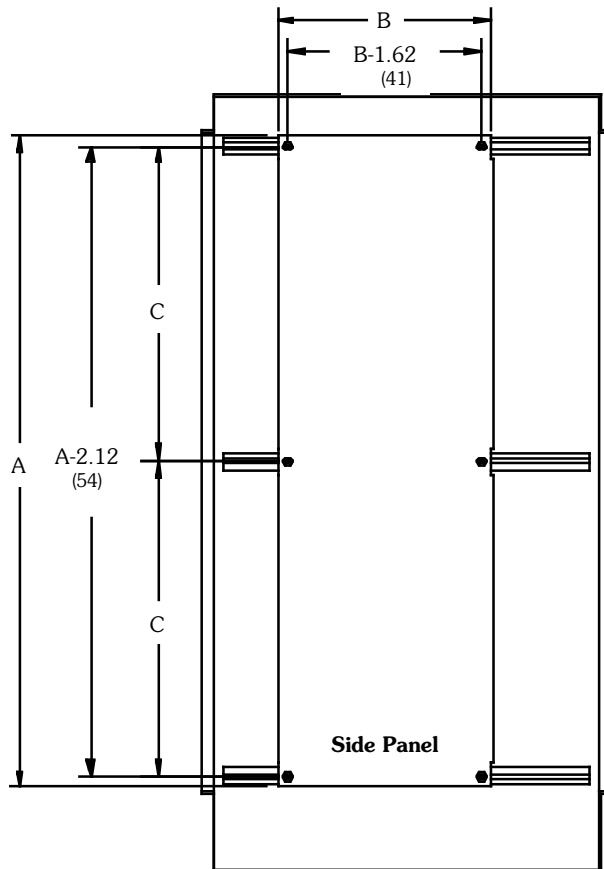
Side Panel And Center Post Accessories

Catalog Number

Side Panel								
Panel	Panel Size		C		Fits Enclosure			
	Height x Width A x B				Height		Depth*	
Catalog Number	in.	mm	in.	mm	in.	mm	in.	mm
AF6018SP	48.37	1229	23.12	587	60.00	1524	18.00	457
AF7218SP	60.37	1533	29.12	740	72.00	1829	18.00	457

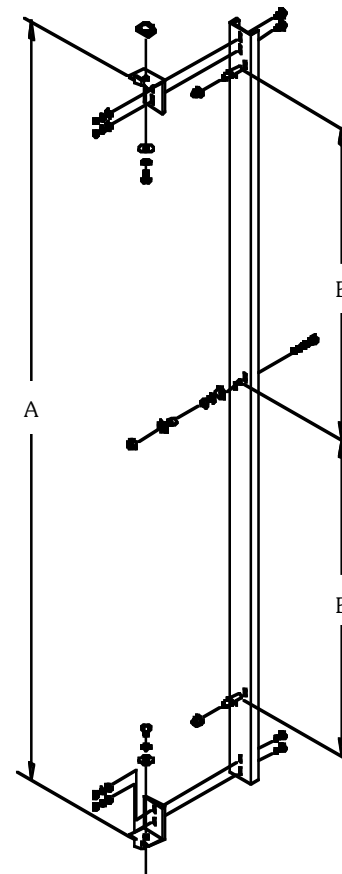
Center Post						
Center Post	A		B		Fits Enclosure	
	Height		Height			
Catalog Number	in.	mm	in.	mm	in.	mm
AF60CPS	58.37	1483	23.12	587	60.00	1524
AF72CPS	70.37	1787	29.12	740	72.00	1829

* Back panels restrict the movement of side panels and will prohibit mounting in some depths. See detail sheet for back panel spacing.



Side Panel Mounting

Side Panels are (12) gauge steel and furnished with hardware necessary for channel mounting. They will fit any width enclosure and are adjustable along its depth, however, when Full or Half Panels are installed, movement will be restricted and with some depths make side mounting prohibitive.



Center Post Assembly

Center Post assembly is furnished with all double-door Full Panels and includes hardware necessary for channel and panel mounting. The Center Post is optional on double-door Half Panels and Swing Panel mounting and must be ordered separately. It attaches to the top and bottom channels making it adjustable along the depth of the enclosure. See illustration #5 on the Detail Sheet-page 202.

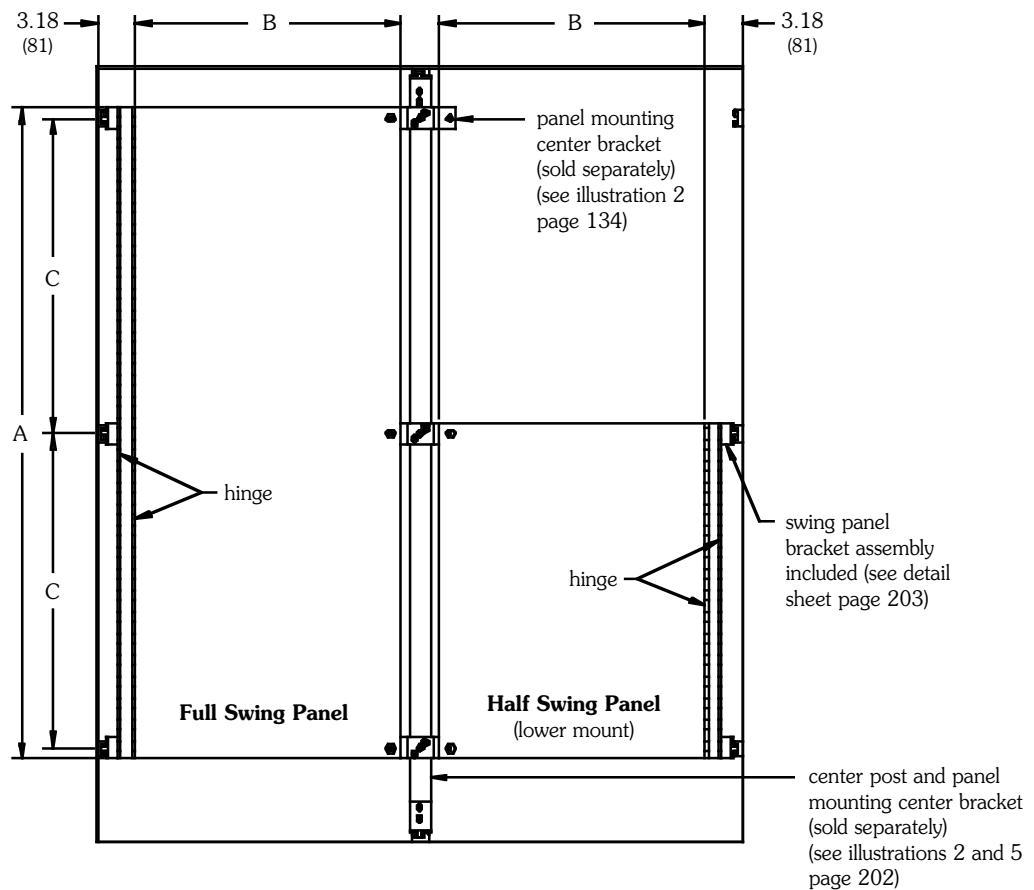
Enviro Shield Free-Standing Enclosures

Full and Half Swing Panel Accessories

Catalog Number

Full Swing Panel							Half Swing Panel														
Panel	Panel Size		C		Fits Enclosure		Panel	Panel Size		C		Fits Enclosure									
Catalog Number	Height x Width		in. mm		in. mm		Catalog Number	Height x Width		in. mm		in. mm									
	A x B							A x B													
	in.	mm	in.	mm	in.	mm		in.	mm	in.	mm	in.	mm								
AF6024SWP	47.87	18.75	1216	476	23.12	587	60.00	48.00	1524	1219	AF6024HSWP	24.75	18.75	629	476	23.12	587	60.00	48.00	1524	1219
AF7230SWP	59.87	24.75	1521	629	29.12	740	72.00	60.00	1829	1524	AF7230HSWP	30.75	24.75	781	629	29.12	740	72.00	60.00	1829	1524
AF7236SWP	59.87	30.75	1521	781	29.12	740	72.00	72.00	1829	1829	AF7236HSWP	30.75	30.75	781	781	29.12	740	72.00	72.00	1829	1829

A Center Post assembly and Center Bracket must be ordered separately.



Swing Panel Mounting

Note: Full Swing Panel and Half Swing Panel for double-door enclosures are (12) gauge steel, have a dual hinge swing panel bracket, and furnished with hardware necessary for side channel mounting. **A Center Post assembly and Center Bracket must be ordered separately.** Panels can be installed so they hinge either on the left or right side. In addition, Half Panels can be mounted in either the upper or lower portion of the enclosure. Free-standing design permits the panel to adjust along the depth of the enclosure. The dual hinge will allow the inner panel to swing completely out of the door opening when within 5.50 inches of the front.

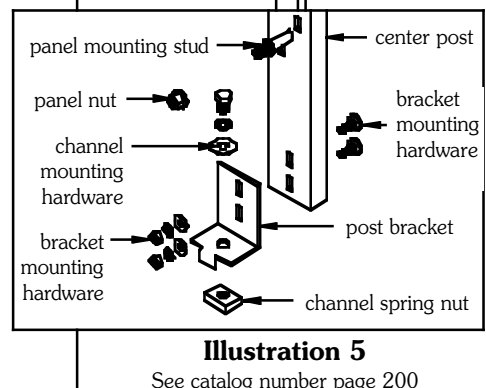
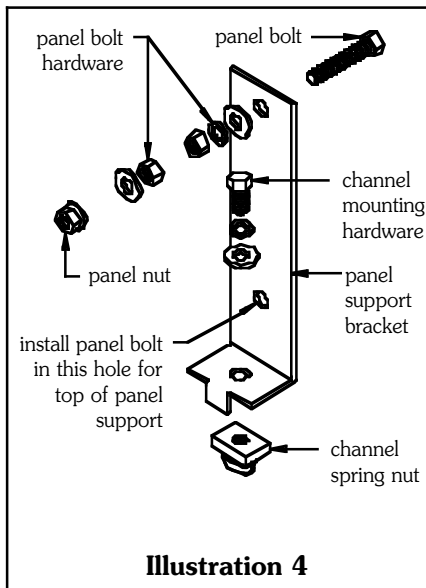
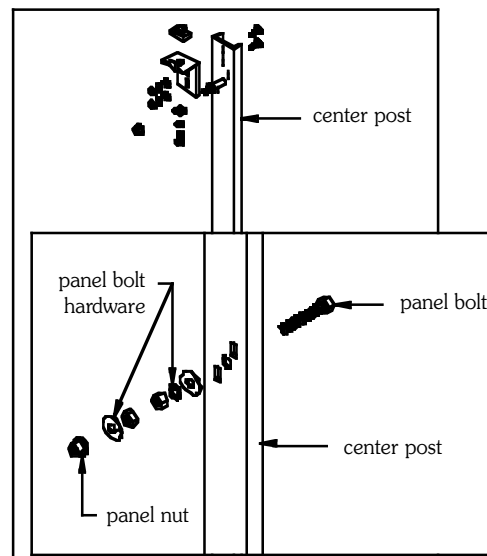
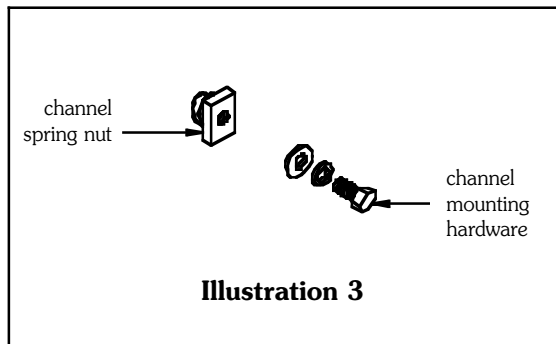
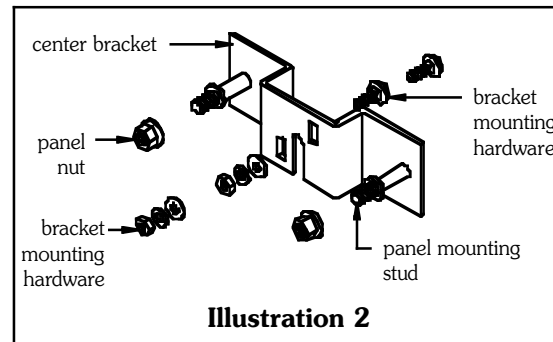
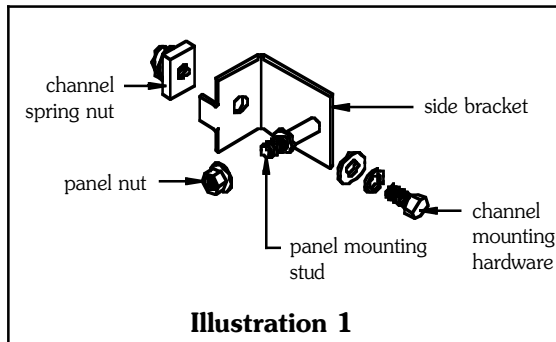
Notes: Dimensions are in inches. Millimeters shown are for reference only. Data subject to change without notice.

Enviro Shield Free-Standing Enclosures

Miscellaneous Accessories

Accessories

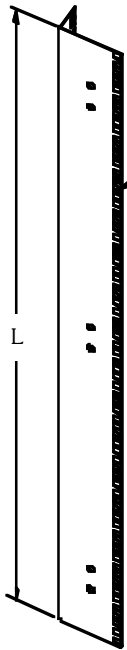
Miscellaneous Accessories			
Catalog Number	Description	Illustration	Quantity
AFSBRKT1	Panel mounting side bracket	1	1
AFCBRKT3	Panel mounting center bracket	2	3
AFCMH3	Channel mounting hardware	3	3
AFPSUP2	Double-door panel support bracket	4	2



Rack Mounting Angles

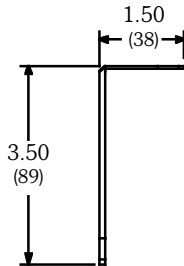
Accessories

Heavy Duty Rack Mounting Angles are designed for mounting 19" (482mm) equipment in the Enviro Shield line as well as a variety of single and double-door free-standing enclosures. **A Center Post Assembly and Center Bracket (sold separately) is required when mounting in any double door enclosure.** Mounting holes are spaced at the 19" "EIA" Standard and are provided to accept #10-32, #12-24, or M6 cage nuts (sold in packages of 100).



Equipment Mounting Holes
To Accept #10-32, #12-24,
or M6 Cage Nuts
(Sold Separately)

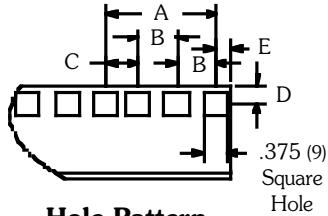
Note: L-shaped angles are universal and can be rotated to accommodate 19" or 23" EIA mounting equipment.



Angle Profile

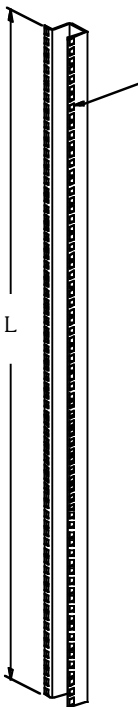
'L' Shaped Mounting Angles					
Catalog Number	Fits Enclosure Height		L		Mounting U's
	in.	mm	in.	mm	
ES-48RMA-L	48	1219	42.00	1067	24
ES-60RMA-L	60	1524	54.25	1378	31
ES-72RMA-L	72	1829	66.50	1689	38
ES-90RMA-L	90	2286	78.75	2000	45

Kit contains two (2) full length 'L' angles, installation instructions, and hardware necessary to mount in single-door enclosures. Yellow Zinc finish.

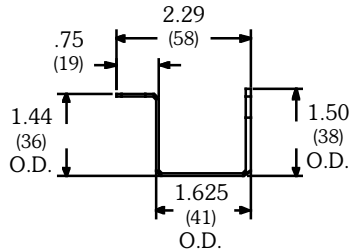


A = 1.75 (44)
B = .625 (16)
C = .500 (13)
D = .295 (7)
E = .250 (6)

Hole Pattern

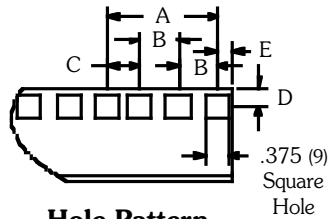


Equipment Mounting Holes
To Accept #10-32,
#12-24, or M6
Cage Nuts
(Sold Separately)



'U' Shaped Mounting Angles					
Catalog Number	Fits Enclosure Height		L		Mounting U's
	in.	mm	in.	mm	
ES-48RMA-U	48	1219	42.00	1067	24
ES-60RMA-U	60	1524	54.25	1378	31
ES-72RMA-U	72	1829	66.50	1689	38
ES-90RMA-U	90	2286	78.75	2000	45

Kit contains two (2) full length 'U' angles, installation instructions, and hardware necessary to mount in single-door enclosures. Yellow Zinc finish.



A = 1.75 (44)
B = .625 (16)
C = .500 (13)
D = .295 (7)
E = .250 (6)

Hole Pattern

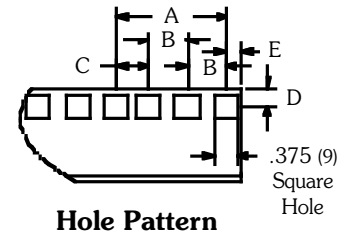
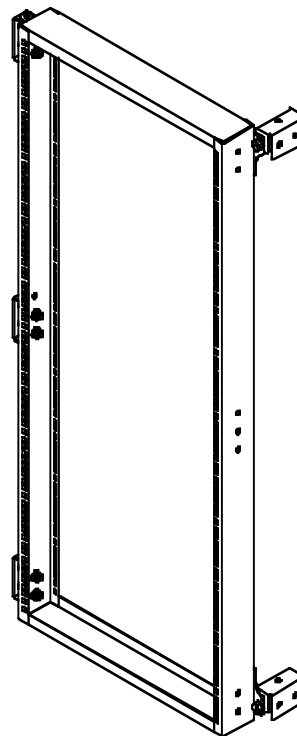
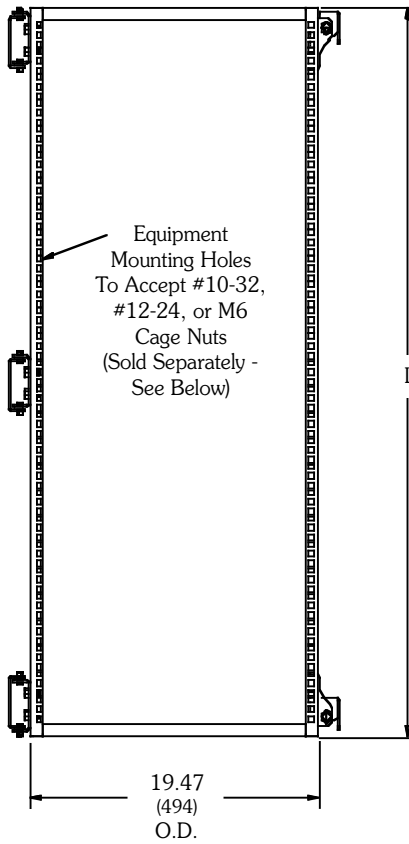
Notes: Dimensions are in inches. Millimeters shown are for reference only. Data subject to change without notice.

Frames & Fasteners

Accessories

Swing-Out Rack Mounted Frame				
Catalog Number	Fits Enclosure Height		L	
	in.	mm	in.	mm
ES-48SORMF	48	1219	36.91	937
ES-60SORMF	60	1524	49.16	1248
ES-72SORMF	72	1829	59.66	1515
ES-90SORMF	90	2286	77.18	1960

Heavy Duty Swing-Out Rack Mounting Frames are designed for mounting 19" (482mm) equipment in the Enviro Shield line as well as a variety of single and double door free standing enclosures. **A Center Post Assembly and Center Bracket (sold separately) is required when mounting in any double door enclosure.** Mounting holes are spaced per the "EIA" Standard and are provided to accept #10-32, #12-24, or M6 cage nuts (sold in packages of 100). Swing-Out Rack Mounting frames have white powder coated finish.



Hole Pattern

- A = 1.75 (44)
- B = .625 (16)
- C = .500 (13)
- D = .295 (7)
- E = .250 (6)

Screws & Cage Nuts		
Catalog Number	Description	Finish
Screws		
E2MA1032PHMS100	#10-32 Phillips	Clear Zinc
E2MA1224PHMS100	#12-24 Phillips	Clear Zinc
E2MAM6PHMS100	M6 Phillips	Yellow Zinc
Cage Nuts		
E2MACN1032100	#10-32 Threads	Clear Zinc
E2MACN1224100	#12-24 Threads	Clear Zinc
E2MACN6100	M6 Threads	Yellow Zinc

Sold in bags of (100)



Screws



Cage Nuts

Notes: B-Line Systems can provide special sizes, finishes and other modifications. Consult the factory for your special requirements.

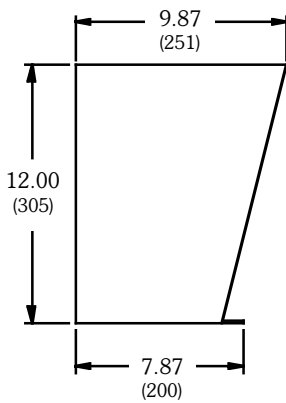
Floor Stand & Enclosure Stabilizer Kits

Accessories

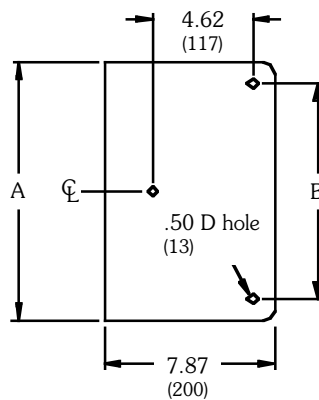


Floor Stand Kits							
Catalog Number		A		B		C	
Steel	Stainless	in.	mm	in.	mm	in.	mm
MFK12	MFK12XS	12.0	305	10.06	256	-	-
MFK16	MFK16XS	16.0	406	14.06	357	-	-
MFK20	MFK20XS	20.0	508	18.06	459	8.00	203
MFK24	MFK24XS	24.0	610	22.06	560	10.00	254

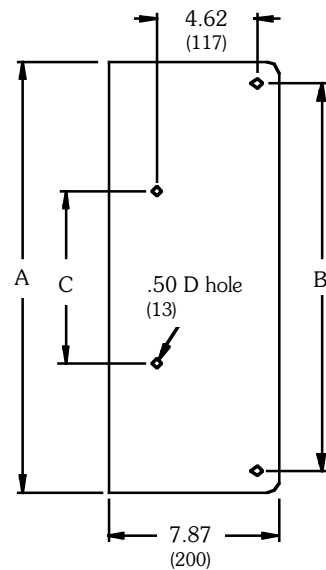
Floor Stand Kits are intended for use with Enviro Shield Type 4X, Type 4 and Type 12 Enclosures where floor support is required. Each kit consists of two (10) gauge legs and hardware for mounting. At the base of each leg is a prepunched plate (see drawing). Steel kits have a gray polyester powder paint finish. Stainless steel kits are fabricated from 304 stainless steel. Standard Floor Stand Kits are 12 inches (305 mm) high. For special heights, special material or non-standard construction consult the factory.



Floor Stand Kit



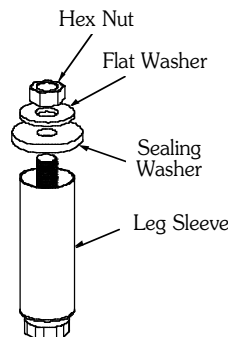
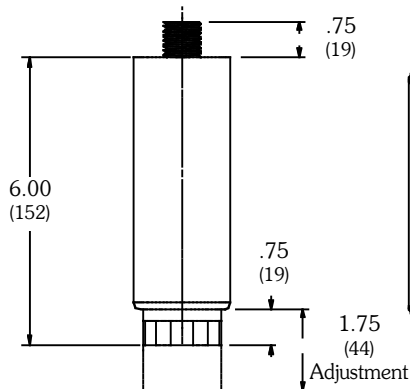
Base 12 - 16 Deep



Base 20 - 24 Deep

Sanitary Leg Kit	
Catalog Number	Description
ES-SMFK6	Set of four (4) legs

Kit allows space between enclosure and floor for compliance in NSF environments 1³/₄" (44mm) adjustment provides flexibility in all applications. Four (4) legs per kit, maintains UL/cUL Type 4X rating when properly installed.

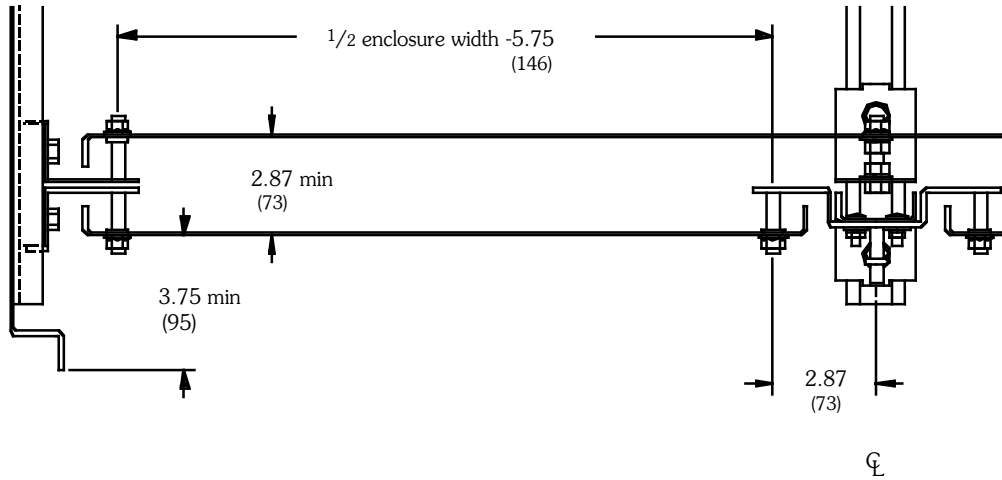


Notes: Dimensions are in inches. Millimeters shown are for reference only. Data subject to change without notice.

Enviro Shield Free-Standing Enclosures

Detail Sheet

Panel and Enclosure Detail

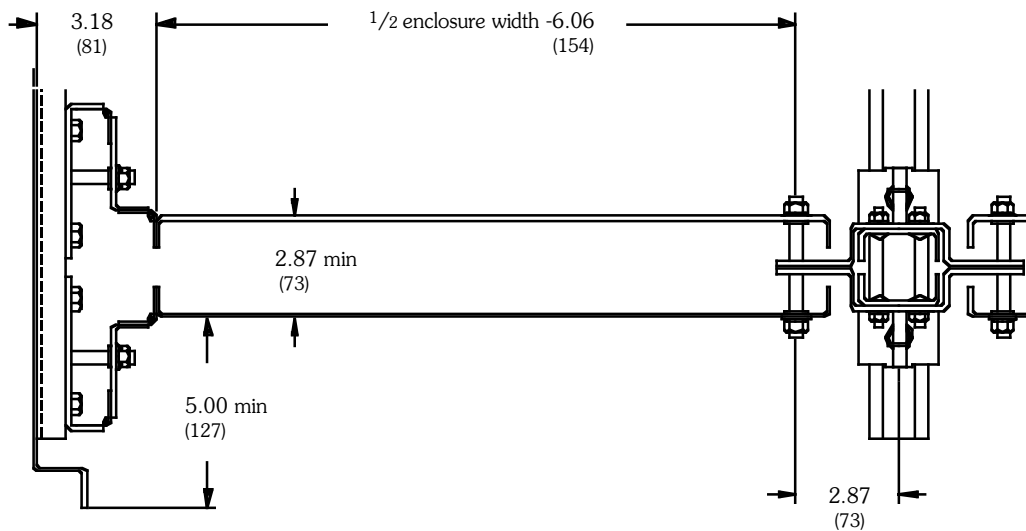


Double Door

(section view showing full panels mounted back-to-back)

(of enclosure)

Swing Panel and Enclosure Detail



Double Door

(section view showing swing panels mounted back-to-back)

(of enclosure)

EXPECT IT ALL...AND GET IT!



B-Line offers a complete line of electrical, electronic, and non-metallic enclosures. Our detailed catalogs will give you a clear picture of B-Line's commitment to high quality enclosures and your satisfaction.

To order catalogs, go to
<http://xs.moorewallace.com>
User ID: literature • Password: bline • Account: cooper

B-Line

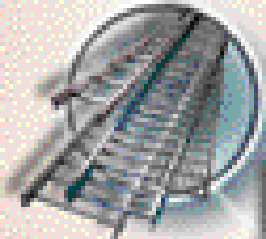
Electronic Enclosures



Bolted Framing



Cable Tray



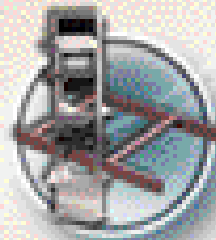
Spring Steel Fasteners



Meter Mounting



Cable Runway & Relay Racks



Customer Service

Address: Cooper B-Line
509 West Monroe Street
Highland, IL 62249

Phone: 800-851-7415
Fax: 618-654-1917

www.cooperblineline.com

Questions, Comments, Suggestions?
"B-VOCALSM
with B-LineSM
Voice Of the Customer...Actively Listening
bvocal@cooperblineline.com
618-654-2184 ext. 456

