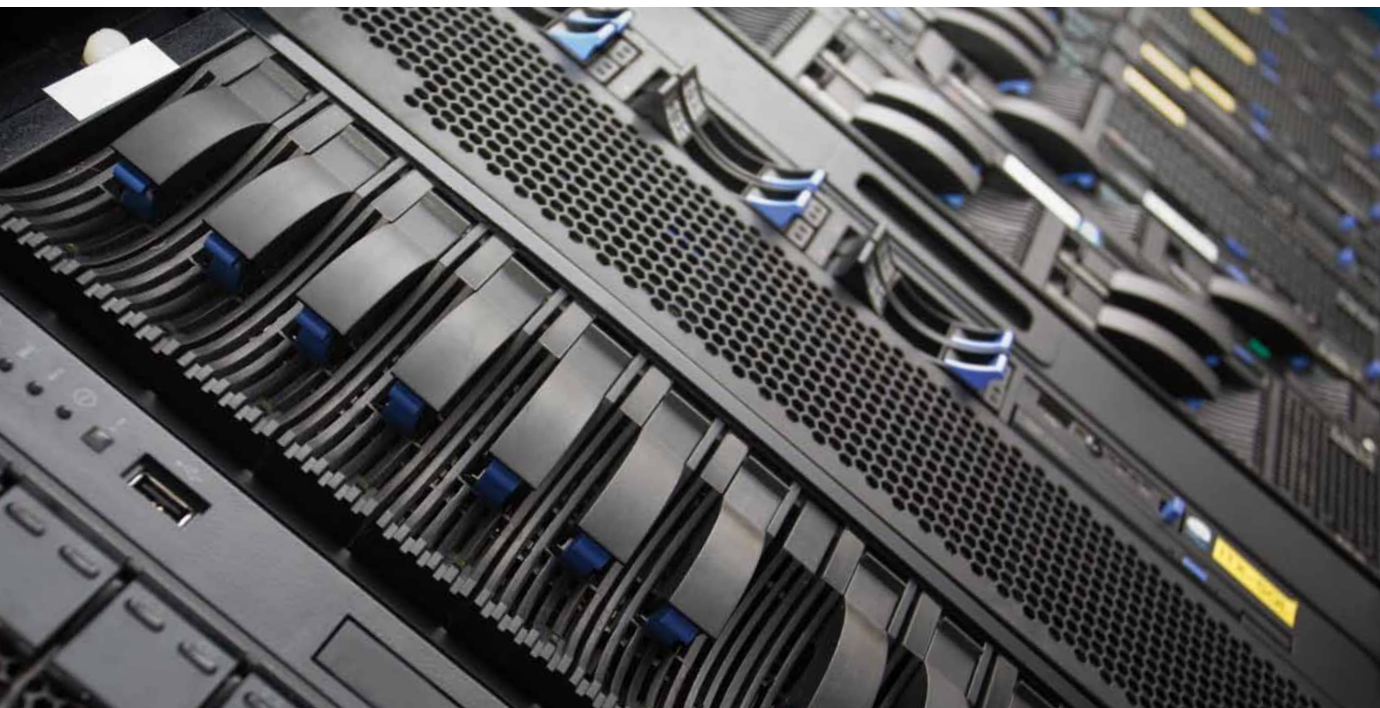


Data Center Solutions Guide

Solutions to Support, Enclose, Connect and
Protect Data Center Equipment and Infrastructure

**COOPER B-Line**



Cooper B-Line is your one-stop resource for support systems and enclosures in all mechanical, electrical and communications subsystems in an enterprise network or data center.

Cooper B-Line's unmatched depth and breadth of data center infrastructure solutions allows you to maximize your design choices. We support IT and data center managers, facility managers, engineers, contractors, and other data center and IT professionals with industry leading

structural, electrical, and datacom support system and enclosure solutions. If you are designing, constructing or upgrading a data center project or facility, partner with the leading manufacturer of support systems and enclosures in the industry: Cooper B-Line.

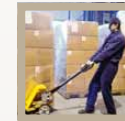


Why Cooper B-Line?



Unmatched range of solutions

We have a full line of products to support, enclose, connect and protect data center infrastructure



Superior service

We offer an industry leading commitment to service and a shipping guarantee that is unique to the market



Specification and design resources

We offer customers a strong set of design and specification tools and resources



Innovation

We deliver product solutions that are innovative and offer labor savings

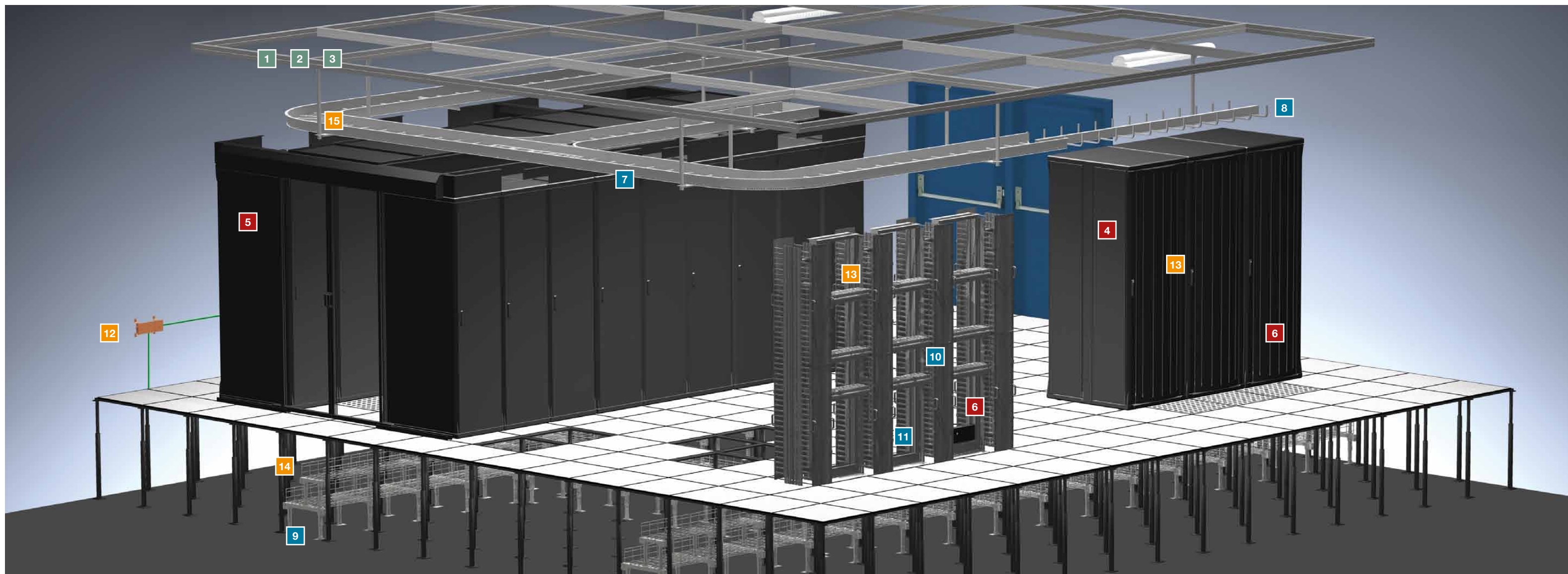


American made

We manufacture domestically, allowing over 90% of our products to be Buy American Act compliant

At Cooper B-Line, our core cultural values include innovation, labor saving solutions, operational excellence, and passion for the customer. This makes us an asset to the designers, builders and operators of our nation's communication infrastructure.

Kevin Kissling, President, Cooper B-Line



Support

Strut ceiling grid support systems are used in data centers to support mechanical, electrical, and plumbing (MEP) systems, lighting fixtures, cable raceway, cable trays, and other critical infrastructure. These products yield a field-installable, flexible system that has the strength of welded construction at a fraction of the cost.

1 B22 Channel Strut
Single-sided, structural-quality steel channel system for standard duty applications.

2 B22A Channel Strut
Double-sided, structural-quality steel channel system for heavy duty applications.

3 Accessories
A complete line of hardware, fittings, clamps, inserts and brackets needed to field fabricate a ceiling grid support system.

Enclose

ACCESS™ provides the ultimate data center enclosure solution with its unique design and myriad accessories. Improve efficiency in the data center and help lower your power usage effectiveness (PUE) score with aisle containment products. Supplement existing security measures with rack security devices to further protect equipment and cabling from unauthorized access.

4 ACCESS Electronic Enclosure
Designed for high performance/high density data center applications with a unique center-post design, which allows users to completely expose the open frame for installation and maintenance of cables and equipment.

5 ACCESS Cold-Aisle Containment System
A system of passive devices designed to fully enclose cold-aisle rows for optimized heat management and cooling efficiency.

6 Rack Security Products
Supplement existing security measures in sensitive applications with devices designed to cover and protect switches, servers, patch panels, and other devices in a data center.

Connect

Cooper B-Line manufactures myriad infrastructure components to support the connections of the equipment, cabling and power in a data center. These products include cable trays and pathways, underfloor cable distribution systems, equipment racks, cable runway, and cable management systems.

7 REDI-RAIL™
Two-Side Rail Cable Tray System is the ultimate system for adaptability and scalability.

8 CENT-R-RAIL™
Center Spine Cable Tray System provides unrivaled flexibility and ease of cable maintenance.

9 F.A.S.T.™ Underfloor
A system for distributing cabling in a raised floor environment that is independent of the floor itself.

10 VDV Equipment Racks
Two post and four post racks that feature multiple options optimized for high density applications.

11 RCM+™ Cable Management System
High density cable managers with a modular, feature-rich design ideal for high cabling densities.

Protect

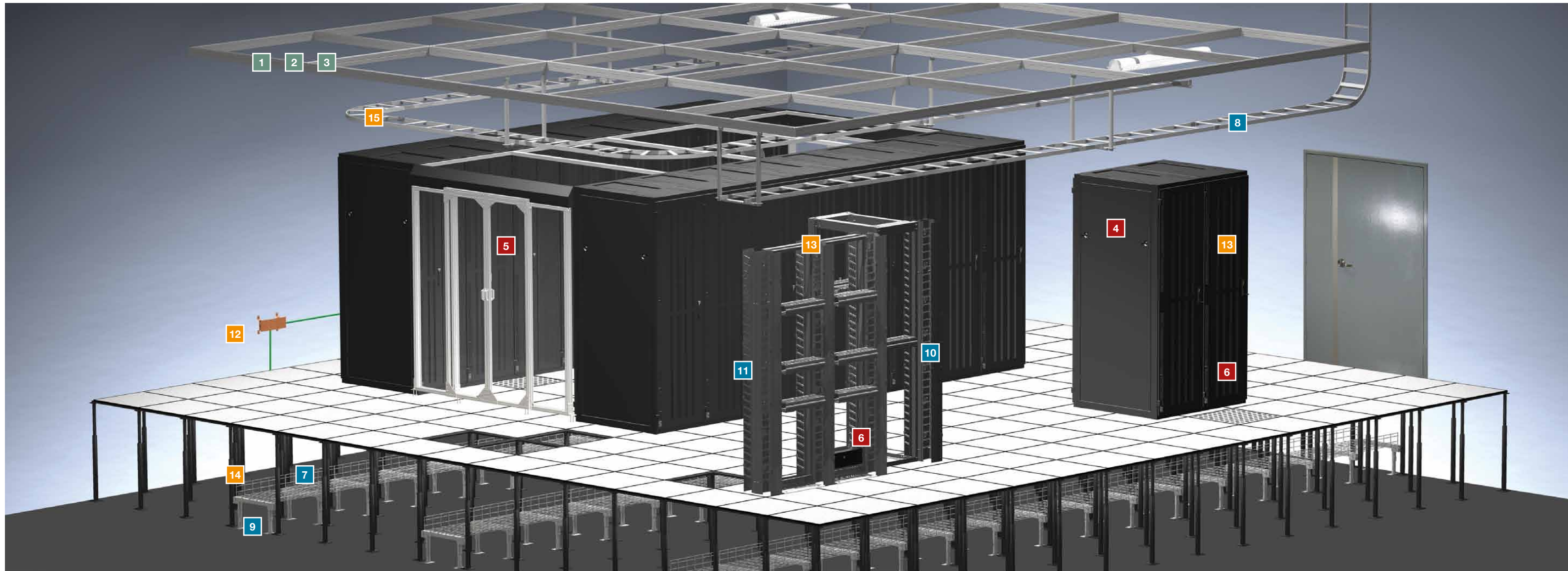
Cooper B-Line's grounding and bonding product portfolio is a complete solution for providing equipment and personnel safety in the data center. All products are UL Listed and support a BICSI and ANS/TIA/EIA-607 compliant installation.

12 TCBB Busbars
Used as a central consolidation point for grounding telecommunications and other low voltage systems within the data center.

13 Grounding Bars
Provides rack-level grounding paths for grounding installed equipment to the rack.

14 Grounding Rod/ Pipe Clamps
Clamps used for connecting ground wires to the raised floor pedestals or helping ground the FAST underfloor system.

15 Grounding Straps
Straps used to maintain a grounding path between connected cable pathway and cable tray products.



Support

Strut ceiling grid support systems are used in data centers to support mechanical, electrical, and plumbing (MEP) systems, lighting fixtures, cable raceway, cable trays, and other critical infrastructure. These products yield a field-installable, flexible system that has the strength of welded construction at a fraction of the cost.

- 1 B22 Channel Strut**
Single-sided, structural-quality steel channel system for standard duty applications.
- 2 B22A Channel Strut**
Double-sided, structural-quality steel channel system for heavy duty applications.
- 3 Accessories**
A complete line of hardware, fittings, clamps, inserts and brackets needed to field fabricate a ceiling grid support system.

Enclose

V-LINE™ enclosures provide a competitively priced yet full-featured solution that delivers superior performance and functionality. Improve efficiency in the data center and help lower your power usage effectiveness (PUE) score with V-LINE aisle containment products. Supplement existing security measures with rack security devices to further protect equipment and cabling from unauthorized access.

- 4 V-LINE Electronic Enclosure**
Optimized for standard data center applications while featuring a budget-friendly price point.
- 5 V-LINE Cold-Aisle Containment System**
A system of passive devices designed to fully enclose cold-aisle rows for optimized heat management and cooling efficiency.
- 6 Rack Security Products**
Supplement existing security measures in sensitive applications with devices designed to cover and protect switches, servers, patch panels, and other devices in a data center.

Connect

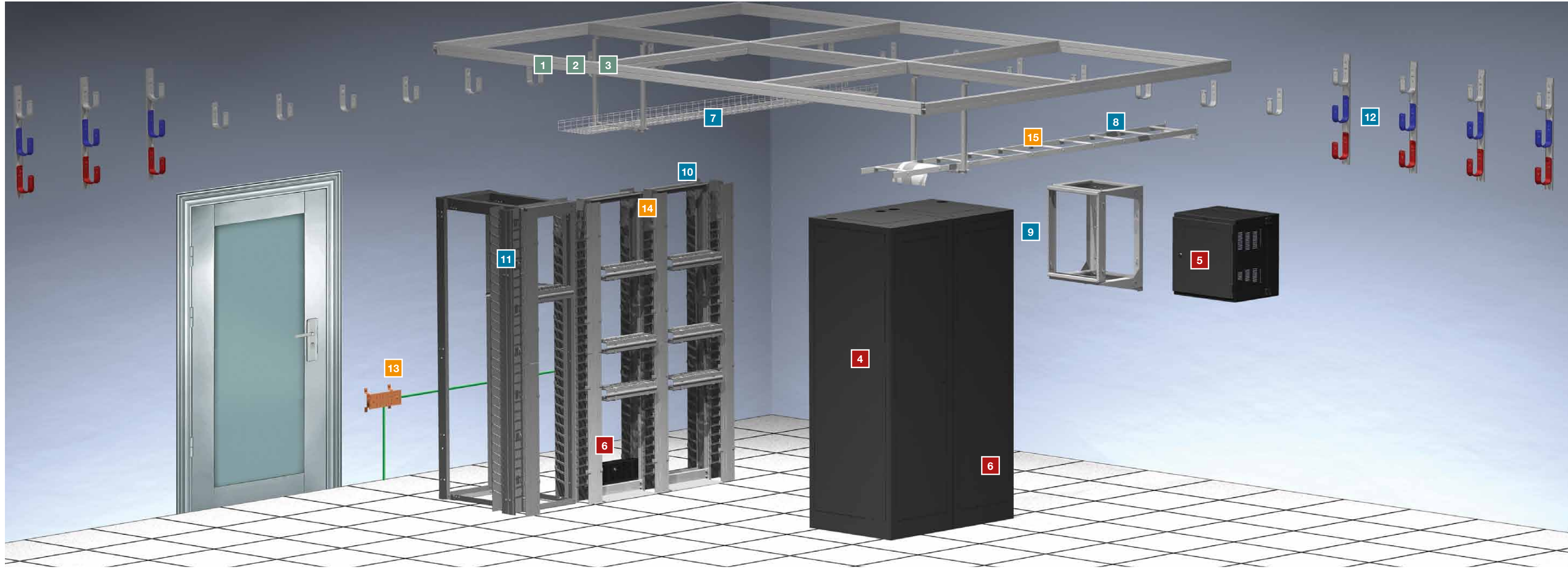
Cooper B-Line manufactures myriad infrastructure components to support the connections of the equipment, cabling and power in a data center. These products include cable trays and pathways, cable runway, underfloor cable distribution systems, equipment racks, and cable management systems.

- 7 FLEXTRAY™**
Wire mesh cable tray system is the preferred system for affordability, adaptability and flexibility.
- 8 Runway**
Ladder-rack style cable runway for supporting horizontal cabling and trunk runs.
- 9 F.A.S.T.™ Underfloor**
A system for distributing cabling in a raised floor environment that is independent of the floor itself.
- 10 VDV Equipment Racks**
Two post and four post racks that feature multiple options optimized for high density applications.
- 11 RCM Cable Management System**
A cost effective option to meet the fundamental needs of most datacom rack applications.

Protect

Cooper B-Line's grounding and bonding product portfolio is a complete solution for providing equipment and personnel safety in the data center. All products are UL Listed and support a BICSI and ANS/TIA/EIA-607 compliant installation.

- 12 TCBB Busbars**
A central consolidation point for grounding low voltage systems within the data center.
- 13 Grounding Bars**
Provides rack-level grounding paths for grounding installed equipment to the rack.
- 14 Grounding Rod / Pipe Clamps**
Clamps used for connecting ground wires to the raised floor pedestals or helping ground the FAST underfloor system.
- 15 Grounding Straps**
Straps used to maintain a grounding path between connected cable pathway and cable tray products.



Support

Strut ceiling grid support systems are used in enterprise networks and TR rooms to support mechanical, electrical, and plumbing (MEP) systems, lighting fixtures, cable raceway, cable trays, and other critical infrastructure. These products yield a field-installable, flexible system that has the strength of welded construction at a fraction of the cost.

1 B22 Channel Strut
Single-sided, structural-quality steel channel system for standard duty applications.

2 B22A Channel Strut
Double-sided, structural-quality steel channel system for heavy duty applications.

3 Accessories
A complete line of hardware, fittings, clamps, inserts and brackets needed to field fabricate a ceiling grid support system.

Enclose

E2Z4 seismic enclosures provide a ruggedized solution that is GR-63-CORE compliant for Zone 4 seismic installations. Secure and protect networking equipment on the wall with our V-LINE wall mounted enclosures. Supplement existing security measures with rack security devices to further protect equipment and cabling from unauthorized access.

4 Seismic Enclosure
The E2Z4 seismic enclosure offers an ideal platform to enclose and protect communication equipment and cabling in seismic environments or other applications where ruggedized construction would be ideal.

5 V-LINE Wallmount
V-LINE Wall Mounted Cabinets provide a cost effective, versatile and secure means to mount communications cabling, networking gear and related equipment on a wall.

6 Rack Security Products
Supplement existing security measures in sensitive applications with devices designed to cover and protect switches, servers, patch panels, and other devices in an enterprise network.

Connect

Cooper B-Line manufactures a number of infrastructure components used to support the connections of the equipment, cabling and power in an enterprise network. These products include cable trays and pathways, cable managers, equipment racks, cable runway, and spring steel fasteners.

7 FLEXTRAY
Wire mesh cable tray system is the preferred system for affordability, adaptability and flexibility.

8 REDI-RAIL Runway
Solution designed for data cabling applications featuring light weight aluminum construction and a full line of accessories.

9 Wall Rack
Wall mounted racks with a swing-open door that provides convenient access to the back of installed equipment.

10 VDV Equipment Racks
Two post and four post racks that feature multiple options optimized for high density applications.

11 RCM Cable Management System
A cost effective option to meet the fundamental needs of most datacom rack applications.

12 Spring Steel Fasteners
A complete line of proven fastener products for cabling, including J-hooks and bridle rings.

Protect

Our line of products for grounding and bonding our support systems and enclosure products is a complete solution for providing equipment and personnel safety. All products are UL Listed and support a BICSI and ANS/TIA/EIA-607 compliant installation.

13 TCBB Busbars
A central consolidation point for grounding low voltage systems within the data center.

14 Grounding Bars
Provides rack-level grounding paths for grounding installed equipment to the rack.

15 Grounding Straps
Straps used to maintain a grounding path between connected cable pathway and cable tray products.

Features and Benefits

As a leading global manufacturer of support systems and enclosures for mechanical/electrical/plumbing (MEP) and voice/data/video (VDV) communications systems, Cooper B-Line provides a wide range of product choices. From a small telecom closet to an enterprise data center, we offer intelligently designed solutions for projects of all sizes. Our MEP and communications subsystems products include:



VDV Equipment Supports

Our full line of VDV equipment support products includes steel and aluminum 19" equipment racks, cable runways, cable management products, and a full line of accessories.



Fastener Products

We feature a complete line of proven fastener products for communications and power cabling, including J-hooks, cover plate brackets and bridle rings.



Electronic Enclosures

We offer a full line of configurable cabinet systems designed to house and protect a wide range of communications equipment. The ACCESS™ and V-LINE™ cabinet platforms are specifically designed to compliment the evolving demands of the premise, co-locate and data center markets. Our E2Z4 enclosures offer robust equipment protection in seismic areas up to Zone 4.



Cable Tray

Our cable tray solutions include REDI-RAIL™ two-side rail systems, CENT-R-RAIL™ center-spine system and our popular FLEXTRAY™ cable management system.



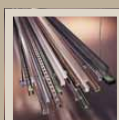
Under-floor Cable Distribution

Our F.A.S.T.™ under-floor cable tray system is a no-tools-required, versatile and easy-to-install system for distribution of cabling in a raised floor environment.



Grounding / Bonding

Our line of products for grounding and bonding our support systems and enclosure products provide a complete solution for providing equipment and personnel safety. All products are UL Listed and support a BICSI and ANS/TIA/EIA-607 compliant installation.



Strut Grid

Our full line of strut and accessories can be utilized to build a ceiling grid used to support MEP systems, lighting, or cable trays in a facility. Strut grids offer remarkable flexibility while producing substantial savings in time and labor, and match the strength of welded construction.

Cooper B-Line Advantage:

Product solutions

No other manufacturer has the depth and breadth of support system and enclosure products as Cooper B-Line. From cabinets to racks to cable tray, look to us for deep product options that help to maximize your design choices. To learn more, go to www.cooperblineline.com/datacenters

Design resources and engineering expertise

Our sales engineers partner with you through all phases of your data center project. From design assistance to on-site installation assistance, our team is ready to serve you. In addition, we provide helpful online design resources. To learn more about our current and growing set of tools, go to www.cooperblineline.com/engineer.

Commitment to service

Cooper B-Line backs our service and shipping with a "PROMISE" guarantee that is unique to the market. To learn more, go to www.cooperblineline.com/promise.

Where innovation meets application.

Our industry-leading reputation for innovation is supported by a vast number of subsystem technologies that offer cost-effective labor savings. Cooper B-Line's support systems and enclosure solutions can be utilized to efficiently and cost-effectively solve challenges in the following networking and data center infrastructure categories:

- Structural
- Mechanical
- Electrical
- Communications

American-made, environmental conscience

Cooper B-Line's solutions are designed, manufactured and delivered by a network of U.S.-based offices and factories, many with unionized workforces. Our American-made product portfolio is eligible to be used on projects with a domestic sourcing requirement for construction materials. Plus, many of our products offer environmental benefits that yield LEED credit eligibility.

Cooper B-Line Data Team.

The Cooper B-Line Data Center Team consists of a number of highly experienced associates dedicated to the solutions-first concept.

- Structural, Electrical, and Comm/Data product and application experts
- Customer Service Quotations Team
- Industry Managers
- Specification Managers

For assistance on your next data center infrastructure project, contact the Cooper B-Line Data Center team at:

datacenters@cooperindustries.com

1.800.851.7415 x313

www.cooperblineline.com/datacenters



Cooper B-Line's U.S. Customer Service Center is staffed Monday through Friday from 7 a.m. to 5:00 p.m. Central Standard Time. If a situation requires that you have to contact us after hours, please leave a message via phone or E-mail so we can give it immediate attention the following business day.

Service Facility – United States:

Cooper B-Line – USA

509 West Monroe Street

Highland, IL 62249

United States

Phone: (800) 851-7415

Fax: (800) 356-1438

Email: blineus@cooperindustries.com

Data Center Team:

Phone: (800) 851-7415 x313

Email: datacenters@cooperindustries.com

Web: cooperbline.com/datacenters

Service Facility – Canada:

Cooper B-Line – Canada

Div. of Cooper Ind. Canada, Inc.

5925 McLaughlin Road

Mississauga, ON L5R 1B8

Canada

Phone: (800) 569-3660

Fax: (888) 753-3355

Email: blinecanada@cooperindustries.com

Service Facility – Europe:

Cooper B-Line, Ltd. – UK

Walrow, Highbridge

Somerset, TA9 4AQ

United Kingdom

Phone: +44 (0) 1278 783371

Fax: +44 (0) 1278 789037

Email: sales@cooperbline.co.uk

Cooper B-Line – Saudi Arabia:

PO Box 70160 - Al Khobar - 31952

Kingdom of Saudi Arabia

Phone: 00966 3 812 2236

Fax: 00966 3 812 1291

Email: blineme@cooperindustries.com

Literature Fulfillment Questions:

Phone: (314) 426-1800

Fax: (314) 426-6022

Email: cooperbline@repcographics.com

Request Literature Website:

<http://order.repcographics.com/cooper/>

Cooper Industries plc
600 Travis, Ste. 5600
Houston, TX 77002-1001
P: 713-209-8400
www.cooperindustries.com