

DataComm Quick Ship Program

Eaton offers stocked inventory of select DataComm products to meet your urgent IT infrastructure needs. The DataComm Quick Ship Program offers fast shipment to locations in the United States from in-stock inventory (quantities limited based on availability). For more information, contact your local sales representative.

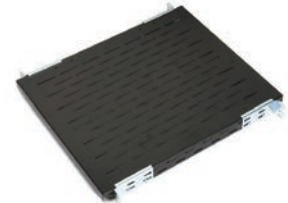


V-LINE™ Enclosures

Eaton's B-Line series provides enclosure systems that boast one of the industry's broadest range of compatibility, accessories and options to store and protect your mission-critical data center equipment.

V-LINE Enclosures & Accessories

Part #	Description
V422436ACVXTSSSB	42U, 79"H x 24"W x 36"D, Sq Holes, High Flow
V422442ACVXTSSSB	42U, 79"H x 24"W x 42"D, Sq Holes, High Flow
V452436ACVXTSSSB	45U, 84"H x 24"W x 36"D, Sq Holes, High Flow
V452442ACVXTSSSB	45U, 84"H x 24"W x 42"D, Sq Holes, High Flow
E2SH4P1930B	Fixed Shelf, 30"D
E2SH4P1936B	Fixed Shelf, 36"D
E2SHSS1930B	Sliding Shelf, 30"D
E2SHSS1936B	Sliding Shelf, 36"D
VCK VLE	V-Line Caster Kit
VADCM4224B	Air Dam Brushes
E018757	3" Plastic Bushing for Top Panel
VBCOK	Top Panel Brush Kit
SB3012	ePDU Mounting Bracket, Cabinet



E2SH4P1936B - Fixed Shelf, 36" D



SB3012 - ePDU Mounting Bracket, Cabinet



V-LINE™ Wall Mount Enclosures

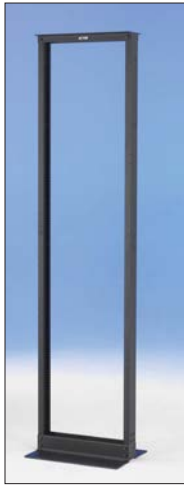
Eaton's B-Line series wall mount enclosures offer a cost-effective, versatile and secure means to mount communication cabling, networking gear and related equipment on a wall.

V-LINE Wall Mount Enclosures

Part #	Description
VLWM2425PB	24"H x 24"W x 25"D, Plexiglas Door
VLWM3625PB	36"H x 24"W x 25"D, Plexiglas Door
VLWM4825PB	48"H x 24"W x 25"D, Plexiglas Door
VLWM3630SB	36"H x 24"W x 30"D, Solid Door
VLWM4830PB	48"H x 24"W x 30"D, Plexiglas Door
VLWM2420PB	24"H x 24"W x 20"D, Plexiglas Door
VLWM3630PB	36"H x 24"W x 30"D, Plexiglas Door
VLWM2430PB	Cabinet: 24"H x 24"W x 30"D, Plexiglas Door
VLWMFKB	Fan Kit with Filter
SB860FSFB	Vertical Finger Support Bracket



SB860FSFB
Vertical Finger Support Bracket



Two-Post & Four-Post Racks

Eaton's B-Line series open frame rack systems meet a variety of application requirements including voice/data/video (VDV) communication systems while providing a suite of accessories that protect your network infrastructure and efficiently route accompanying cabling.



Open Frame Rack & Accessories

Part #	Description
SB556084XUFB	Two-Post Rack: 84"H x 19"W x 3"D, Black
SB837084CFB	Four-Post Adj. Rack: 84" x 19"W x 30-36"D, Tapped Hole
SB708193018FB	Swing Gate Rack: 30"H x 19"W x 18"D
SB86166SFB	RCM High Density Cable Manager 84"H x 6"W, Single
SB86166DFB	RCM High Density Cable Manager 84"H x 6"W, Double
SB86486D084FB	RCM+™ High/Low Density Cable Manager, 84"H x 6"W, Double
SB87019S1FB	RCM+™ Horizontal Cable Manager, Single, 1U
SB87019S2FB	RCM+™ Horizontal Cable Manager, Single, 2U
SB596S19103AFB	Double-Sided Rack Mounted Shelf, Aluminum, Solid
SB747S1915AFB	Single-Sided Rack Mounted Shelf, Aluminum, Solid
SB749S1915SFB	Single-Sided Rack Mounted Shelf, Steel, Solid
SB3010FB	Fixed ePDU Mounting Bracket, Rack, Flat Black
SB3011FB	Adjustable ePDU Mounting Bracket, Rack, Flat Black
SB57903	Rack Mount Universal Ground Bar
SB58604BZ	#12-24 Mounting Screws, 50 Pack
SB588AZN	Network Equipment Rack Anchor Kit
SB860ACSB	Adjustable Cable Spool



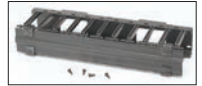
SB86166SFB
RCM High Density
Cable Manager



SB3010FB
Fixed ePDU Mounting Bracket, Rack



SB860ACSB
Adjustable Cable Spool



SB87019S2FB
RCM+™ Horizontal Cable Manager,
Single, 2U



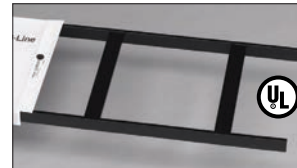
Redi-Rail™ Runway

Eaton's B-Line series Redi-Rail Runway is a unique and flexible solution designed for data cabling applications. Instead of a welded rung, the Redi-Rail rung connections are made with hardware engineered for a strong connection. This allows rungs to be moved using standard tools.

Runway & Accessories

Part #	Description
SB13AL12FB	1 1/2" Redi-Rail Runway Straight Section, 12"W
SB13ALD012FB	Redi-Rail Runway Drop Out, 12"W
SB12606FB	Bolt On Cable Retaining Post Kit
SB17U12BFB	1 1/2" Boxed Tubular Runway, 12"W
SB17HRB12FB	90° Horizontal Runway Bends, 12"W
SB17VRB12FB	90° Vertical Runway Bends, 12"W
SB2116ABZ	Runway Support Kit, 5/8" ATR
SB2116DBZ	Runway Support Kit, 1/2" ATR
SB2118ABZ	Slotted Runway Support Kit, 5/8" ATR
SB2118DBZ	Slotted Runway Support Kit, 1/2" ATR
SB211312FB	Runway Wall Angle Support Kit, 12"W
SB21312KFB	Triangular Runway Wall Support Kit, 12"W
SB213312FB	3" Rack Top Plate Runway Support Kit
SB227R6FB	Runway Stand-Off Kit
SB117ABZ	Cable Retaining Post, 1 1/2" Stringer
SB2004ABZ	J-Bolt Kit
SB2101ABZ	Runway 90° Junction Splice Clamp & Kit
SB2107BZ	Butt-Splice Clamp Kit
SB2114AFB	Runway Hold Down Clamp Kit
SB2129U12FB	Runway Drop Out, 12"W
SB2129SD12FB	Side Runway Drop Out, 12"W
SB21B	Neoprene End Caps, 10 Pack
SB6691X73/4	Grounding Strap
SBTMGB12K	Telecommunications Main Ground Bar Kit

FB = Flat Black BZ = Black Zinc B = Black ZN = Zinc



SB17U12BFB
1 1/2" Boxed Tubular Runway, 12"W



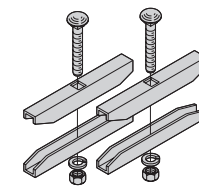
SB13AL12FB
1 1/2" Redi-Rail Runway Straight Section, 12"W



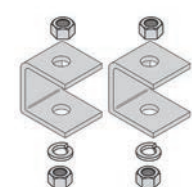
SB17HRB12FB
90° Horizontal Runway Bends, 12"W



SB17VRB12FB
90° Vertical Runway Bends, 12"W



SB2107BZ
Butt-Splice Clamp Kit



SB2116ABZ, SB2116DBZ
Runway Support Kit, 5/8" ATR, 1/2" ATR

For more information, please contact your sales representative.

* Eaton has made every effort to ensure the integrity of the contents of this document. However, Eaton cannot accept responsibility for errors that may have been caused by changing part numbers, typographical or clerical errors in the preparation of this document.