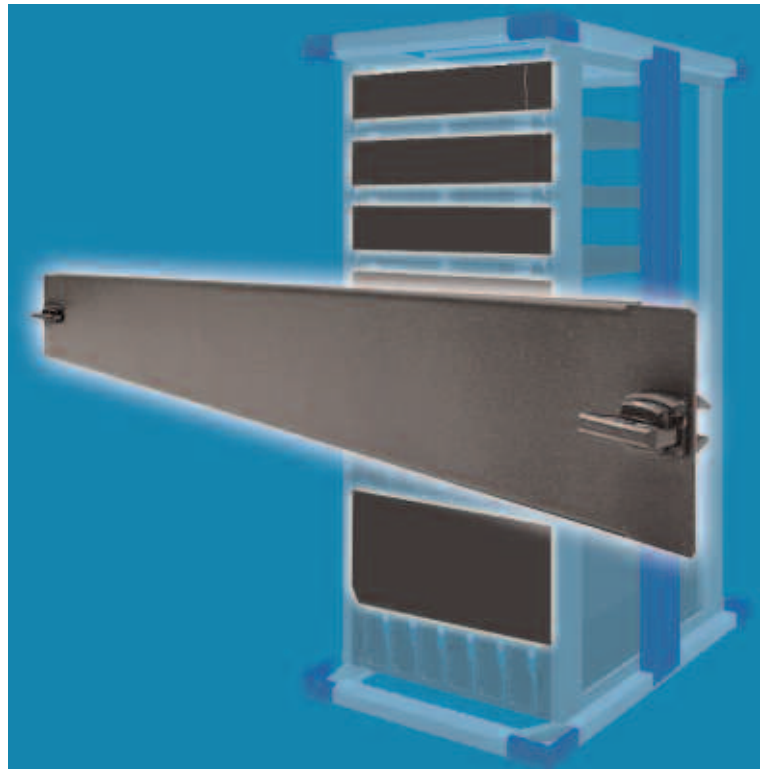


## Quick Fit Blanking Panels

Cooper B-Line's Quick Fit blanking panels are an important component of a portfolio of products developed to help control airflow within an electronic enclosure. These panels are used to cover unused rack mount spaces in electronic enclosures housing active networking equipment like switches and servers. Covering those open spaces helps to ensure proper airflow through the enclosure and prevent the recirculation of hot exhaust air back through the equipment. The benefit is maximized equipment cooling efficiency which promotes the long term longevity and reliability of your network electronics.

These panels are designed for fast, simple installation into 19" rack mount electronic enclosures with EIA square hole rails installed. Installation, removal and reinstallation within the enclosure is quick and easy since tool-less quarter turn fasteners are used to secure the panels to the mounting rails. Cooper B-Line's Quick Fit blanking panels are available in 1U, 2U and 5U heights and are stocked in a black powder coat finish.



## Features

- Tool-less quarter turn polycarbonate latches for quick installation and removal
- Panel made of 17 gauge steel
- Available in 1U, 2U and 5U heights

## Benefits

Prevents air recirculation in electronic enclosures by blocking off unused rack mounting space which maximizes cooling efficiency.

Part Number	Description	Shipping Wt
PPS1UQFB	1U 19-inch Quick Fit blanking panel 19" wide X 1 <sup>3</sup> / <sub>4</sub> " high, black finish	0.6 lbs
PPS2UQFB	2U 19-inch Quick Fit blanking panel 19" wide X 3 <sup>1</sup> / <sub>2</sub> " high, black finish	1.0 lbs
PPS5UQFB	5U 19-inch Quick Fit blanking panel 19" wide X 8 <sup>3</sup> / <sub>4</sub> " high, black finish	2.4 lbs

Specification subject to change without notice. For further information, please contact –

Cooper B-Line - USA • 509 West Monroe Street • Highland, IL 62249 • United States  
Phone: (800) 851-7415 • Fax: (800) 356-1438 • Email: [blineus@cooperindustries.com](mailto:blineus@cooperindustries.com)