



# KwikWire™ Clamp

**New  
Design**

## The Hanging System Without A Weak Link!

**The KwikWire™ hanging system from Cooper B-Line,  
Takes the strain out of hanging with chain!**

The KwikWire™ hanging system is a flexible replacement for jack chain and all-thread rod. KwikWire will slash your hanging time and can easily be adjusted by hand.



Key benefits of the KwikWire system include:

- Installs up to 50% faster - can quickly wrap around beam - no drilling required
- Simple height adjustments are made by releasing locking tab - no tools required
- Aesthetically pleasing, blends in with upper structural supports
- Ideal for sloped ceilings - supports loads at up to a 60° angle

Applications for KwikWire include:

- Light fixtures
- HVAC duct support
- Sway Bracing
- Sign/banner supports
- Wire basket cable tray
- Bus duct
- Air handling equipment

### KwikWire™ Clamp Working Loads\*

| Clamp Part No. | Wire Rope Dia.<br>In. (mm) | Loading Safety Factor 5<br>Lbs. (kg) |
|----------------|----------------------------|--------------------------------------|
| <b>BKC100</b>  | 1/16" (1.5 mm)             | 0-75 (0-35kg)                        |
|                | 5/64" (2.0 mm)             | 0-100 (0-45kg)                       |
|                | 3/32" (2.5 mm)             | 25-150 (11-70kg)                     |
| <b>BKC200</b>  | 3/32" (2.5 mm)             | 25-150 (11-70kg)                     |
|                | 1/8" (3.0 mm)              | 25-250 (11-115kg)                    |
|                | 3/16" (5.0 mm)             | 50-640 (22-300kg)                    |

\* Working loads shown above are for hanging vertically.

\* Working loads shown above are for hanging vertically. For suspending at 15°, 30°, 45° or 60° angles from vertical use the following percentage of the working loads from the chart:

15° = 96%    30° = 86%    45° = 70%    60° = 50%

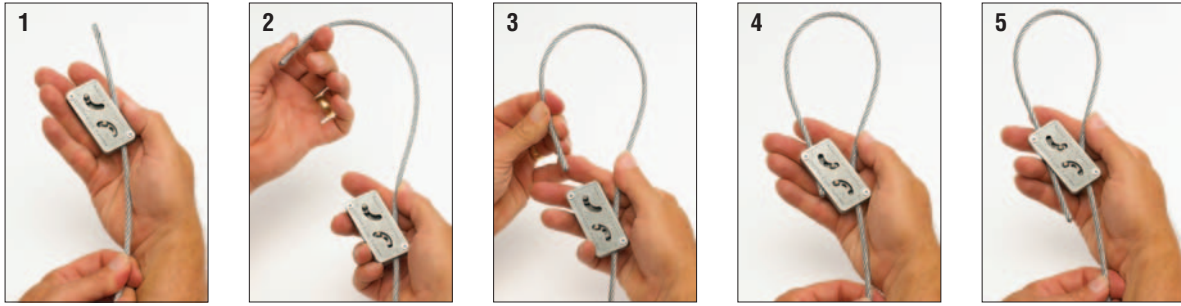
### Cooper Wire Rope Data

| Catalog Number | Construction | Wire Rope Diameter |  |
|----------------|--------------|--------------------|--|
| <b>BKW063</b>  | 7 x 7        | 1/16"              |  |
| <b>BKW078</b>  | 7 x 7        | 5/64"              |  |
| <b>BKW094</b>  | 7 x 7        | 3/32"              |  |
| <b>BKW125</b>  | 7 x 7        | 1/8"               |  |
| <b>BKW188</b>  | 7 x 19       | 3/16"              |  |

**Fasteners • BA201F**

**COOPER B-Line**

## KwikWire™ Installation Steps



- (1) Pass the wire rope through the KwikWire Clamp
- (2) Loop wire rope through/around support
- (3) Pass wire rope back through KwikWire Clamp
- (4) Push wire rope through clamp leaving 2" to 3" tail, then apply tension on wire rope
- (5) To adjust, remove tension and pull wire rope slightly to disengage teeth, slide adjustment pin in direction shown by arrow to release wire rope

### Recommendations:

- Do not exceed the safe working load of the product shown in chart on front page
- **KwikWire load ratings are guaranteed only when used in combination with Cooper B-Line wire rope**
- Do not use for overhead lifting or hoisting
- Do not use if cable or components are visibly distorted or worn, remove damaged cable end prior to inserting in KwikWire Clamp
- Do not paint cable near working area of KwikWire Clamp
- Do not apply lubricant
- Keep product clean and free of dirt
- Do not use on coated wire rope
- Do not use in chlorinated or caustic atmospheres
- For use in **"DRY LOCATIONS ONLY"**
- Cooper B-Line's BKCC tool is recommended for cutting wire rope to prevent fraying
- For use on vertical applications only

## Other Available KwikWire™ Products



  
**KwikWire™**  
Starter Kit



  
**KwikPak™**  
Wire Rope &  
Clamps KwikPak

**Coming Soon**

**An Expanded  
Line Of KwikWire  
Accessories**



  
**KwikWire™**  
Wire Rope &  
Cable Cutter

Phone: 800-851-7415 • [www.cooperbline.com](http://www.cooperbline.com)