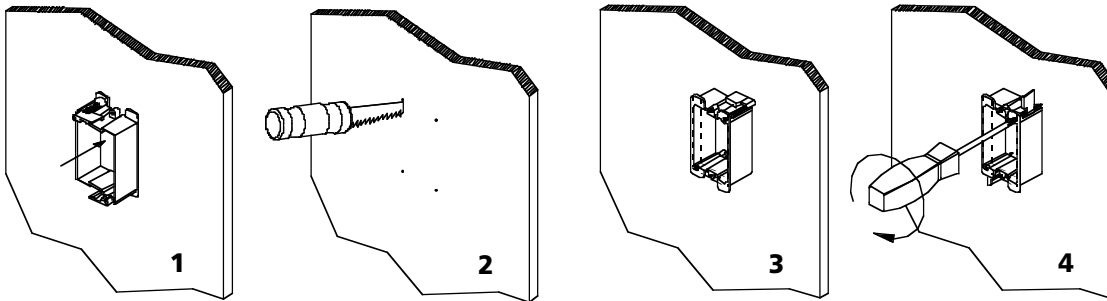
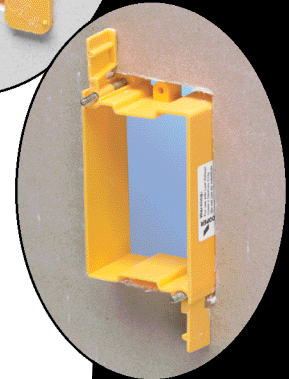


A D V A N T A G E

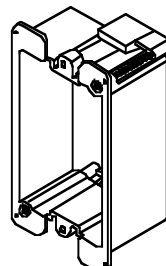
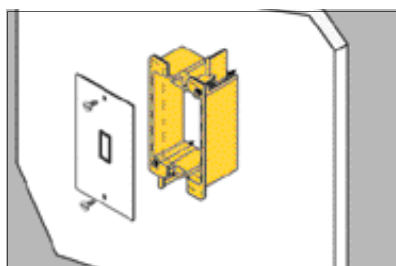
Plastic Cover Plate Mounting Bracket

Features

- Provides attachment base for low voltage outlets.
- Replaces electrical box in Class 2 low voltage installations.
- New plastic version eliminates rough edges of bracket.
- Maximum drywall thickness: 3/4"
- Simple to install:
 1. No measuring required - Simply press face of mounting bracket onto drywall, corner points will outline cutout position
 2. Cut hole in drywall (3⁵/₈" x 2¹/₈")
 3. Install mounting bracket into drywall opening
 4. Tighten screws to secure mounting bracket in place



UPC/Part Number	Catalog Number	Description	Box Qty.
782051 39235	BB10P	Single Gang Bracket	50



Collect B-Line Bucks... and get Great Gear!



Look for this label on B-Line Fastener boxes

Simply purchase B-Line fasteners from your distributor, remove your B-Line Bucks from the box, and use them to select from the wide assortment of merchandise in B-Line's Great GearSM catalog.

For more information about the B-Line Great GearSM program, or to obtain a catalog and order forms, see your local B-Line distributor, or visit our website at:

www.cooperblineline.com/greatgear



Introducing B-Line's Plastic Cover Plate Mounting Bracket



Attach Address Label Here

COOPER B-Line
509 West Monroe Street
Highland, Illinois 62249-0326