

# B-LINE ARMAFIX<sup>TM</sup> CLAMPS

**Fast • Simple • Complete**

**The Only Solution  
for an Insulated Piping System**

- Engineered load-bearing inserts prevents insulation compression
- Innovative insulated pipe support
- Desirable “Foam-to-Foam” Bond
- Ensures total system reliability

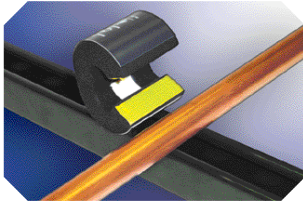


**COOPER B-Line**  
[www.cooperblineline.com](http://www.cooperblineline.com)  
800-851-7415

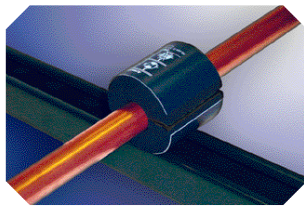
# Close the Gap . . .

# B-Line Armafix™ Clamps

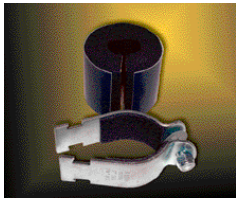
Cooper B-Line Armafix™ Clamp inserts provide engineered solutions for supporting insulating pipes for both strut and pipe hanger applications.



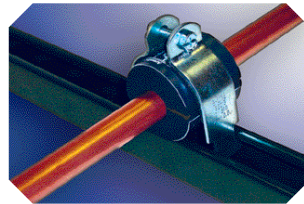
The ability to **continuously** insulate tubing through the “point of support” has finally arrived. Cooper B-Line Armafix™ Clamp inserts are a quick, innovative alternative for this type of application compared to costly, time-consuming field methods. The engineered, “foam-to-foam” bonded solution provides optimum load bearing capability while protecting against insulation compression and condensation gaps that can compromise system reliability.



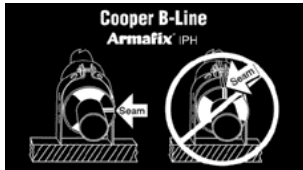
Along with the B-Line Armafix™ Clamp inserts, and important for proper installation, a pair of non-skid pipe straps and a nylon elastic stop nut (included) ensures minimal insert movement and anti-vibration control after installation. Together, this creates a simple combination that speeds assembly and creates a completely insulated system, with worry-free performance.



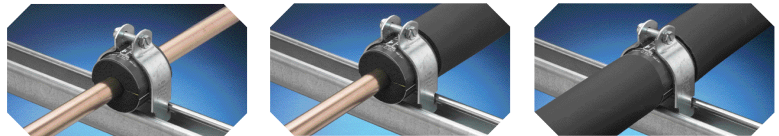
B-Line Armafix™ Clamp assembly (shown)



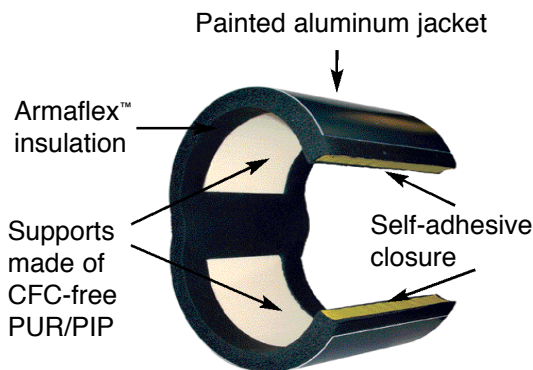
B-Line Armafix™ Clamp inserts are used to support insulated pipes with appropriately sized hangers (sold separately) that retard heat gain and control condensation drip from cold-water plumbing, chilled-water and refrigeration lines.



<b>Slip Data</b> 45 lbs. Max	<b>Recommended Clamp Torque</b> 12-15 in-lbs.
---------------------------------	--------------------------------------------------



- **Prevent Condensation**  
Armaflex™ closed-cell elastomeric foam prevents the flow of moisture vapor.
- **Maintain Total Insulation System Integrity**  
Foam-to-foam bond prevents gaps in the insulation system. Thus, no “icing” at point of support.
- **Faster: Reduce Total Installed Costs**  
Eliminates cumbersome, time-consuming field fabrication.
- **Prevent Most Common Cause of Ceiling Damage**  
No more water staining or sagging caused by condensation drips at hanger locations.
- **Safer: Prevent a Cause of Wet Floors under Open Ceilings.**  
No more water pooling caused by condensation drips at support locations.
- **Reduce Call Backs**  
Simple, lasting method for preventing compression at support locations.



# FAST • SIMPLE • COMPLETE

## Catalog Number Info and Sizing Table

1/2" Wall Insulation				3/4" Wall Insulation				1" Wall Insulation			
Clamp assy Catalog #	①	Pipe/Copper/OD Size	②	Clamp assy Catalog #	①	Pipe/Copper/OD Size	②	Clamp assy Catalog #	①	Pipe/Copper/OD Size	②
IPH03812	WO	3/8" OD	1 1/4"	IPH03834	WO	3/8" OD	2"	IPH05810	WO	5/8" OD	2 1/2"
IPH01212	WO	1/2" OD	1 1/4"	IPH01234	WO	1/2" OD	2"	IPH03410	WO	3/4" OD	2 1/2"
IPH05812	WO	5/8" OD	1 1/2"	IPH05834	WO	5/8" OD	2"	IPH07810	WO	7/8" OD	3"
IPH03412	WO	3/4" OD	1 1/2"	IPH03434	WO	3/4" OD	2"	IPH11810	WO	3/4" IPS & 1 1/8" OD	3"
IPH07812	WO	7/8" OD	2"	IPH07834	WO	7/8" OD	2 1/2"	IPH13810	WO	1 3/8" OD	3 1/2"
IPH11812	WO	3/4" IPS & 1 1/8" OD	2"	IPH11834	WO	3/4" IPS & 1 1/8" OD	2 1/2"	IPH15810	WO	1 5/8" OD	3 1/2"
IPH13812	WO	1 3/8" OD	2 1/2"	IPH13834	WO	1 3/8" OD	3"	IPH11010	WO	1 1/2" IPS & 1 7/8" OD	4"
IPH15812	WO	1 5/8" OD	2 1/2"	IPH15834	WO	1 5/8" OD	3 1/2"	IPH21810	WO	2 1/8" OD	4"
IPH11012	WO	1 1/2" IPS & 1 7/8" OD	3"	IPH11034	WO	1 1/2" IPS & 1 7/8" OD	3 1/2"	IPH25810	WO	2 5/8" OD	5"
IPH21812	WO	2 1/8" OD	3"	IPH21834	WO	2 1/8" OD	4"	IPH31810	WO	3 1/8" OD	5"
IPH25812	WO	2 5/8" OD	3 1/2"	IPH25834	WO	2 5/8" OD	5"	IPH35810	WO	3 5/8" OD	6"
IPH31812	WO	3 1/8" OD	4"	IPH31834	WO	3 1/8" OD	5"	IPH41810	WO	4 1/8" OD	6"
IPH35812	WO	3 5/8" OD	5"	IPH35834	WO	3 5/8" OD	6"	IPH40010	WO	4" IPS	8"
IPH41812	WO	4 1/8" OD	6"	IPH41834	WO	4 1/8" OD	6"	IPH50010	WO	5" IPS	8"
IPH40012	WO	4" IPS	6"	IPH40034	WO	4" IPS	6"	IPH60010	WO	6" IPS	10"
IPH50012	WO	5" IPS	8"	IPH50034	WO	5" IPS	8"	IPH80010	WO	8" IPS	12"
IPH60012	WO	6" IPS	8"	IPH60034	WO	6" IPS	10"				
				IPH80034	WO	8" IPS	12"				

- ① Designates clamp insert only. Add WO to catalog number for clamp insert only.  
 ② Recommended hanger size (ordered separately). See back for application detail.

### Physical Data Properties of Insert

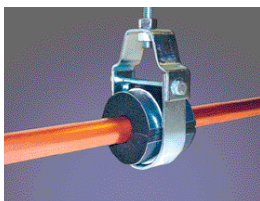
#### Physical Properties

Thermal Conductivity BTU-in/hr • sq.ft. • °F (W/m • K) 75°F mean temperature (24°C) 90°F mean temperature (32°C)	0.27 (0.039) 0.276 (0.040)	ASTM C 177 or C 518
Water Vapor Permeability Perm-inch [Kg/(s m Pa)]	0.08 [1.16 x 10 <sup>-13</sup> ]	ASTM E 96 Procedure A
Water Absorption, % by volume	0.2	ASTM C 209
Upper Use Temperature Limit, °F (°C)	220 °F (105 °C)	—
Lower Use Temperature Limit*, °F (°C)	-58 °F (-50 °C)	—
Density, typical range**, lbs/ft <sup>3</sup>	8.0 - 11.0	ASTM D 1662 or ASTM D 1667

\* At -20°F (-29 °C) flexible Armaflex insulation becomes hard and as temperatures drop below -20°F (-29 °C), will be increasingly brittle; however, this hardening characteristic does not affect thermal efficiency or water vapor permeability.

\*\* Reference only.

The data and information are provided as a technical service and are subject to change without notice.



- ① Hangers are sold separately. Order clamp insert only by adding a WO to above Part #s (Example: IPH03812WO)



Armaflex™ 520  
Foam Adhesive  
Part # IPH52016  
16 oz.

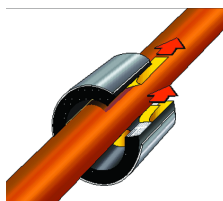


Armacell®  
Insulation Tape  
Part # IPH18230  
30 ft. roll

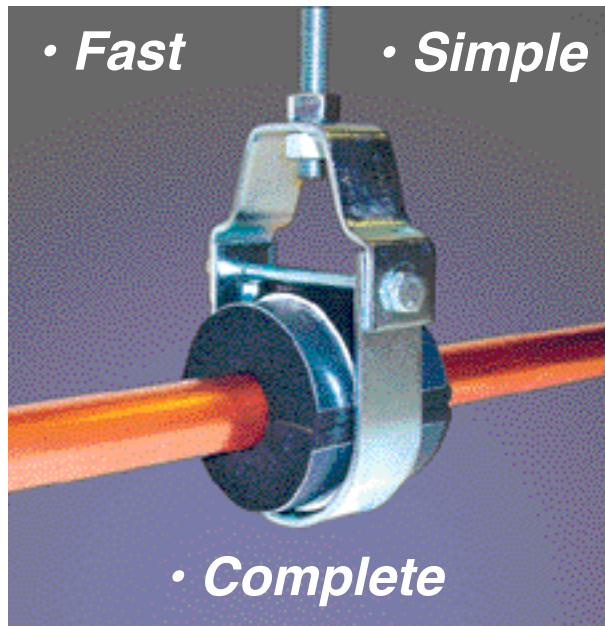
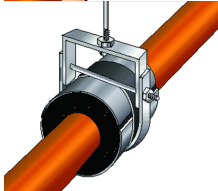
See back for application detail.

# Applications Using Armafix™ Clamp Inserts

## Simple Pipe Hanger Application



Pipe insulation will complete either the pipe hanger or strut insulation system.



### Customer Service

For Engineering Specifications go to:  
[www.cooperbline.com/engineer/specs.asp](http://www.cooperbline.com/engineer/specs.asp)

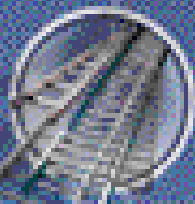
Cooper B-Line  
 509 West Monroe Street  
 Highland, IL 62249  
[www.cooperbline.com](http://www.cooperbline.com)

Phone: 800-851-7415  
 Fax: 618-654-1917

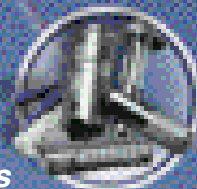
*Bolted Framing*



*Cable Tray*



*Anchors*



*Spring Steel Fasteners*



*Electrical Enclosures*

