

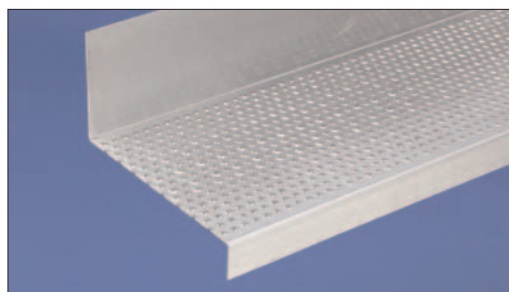
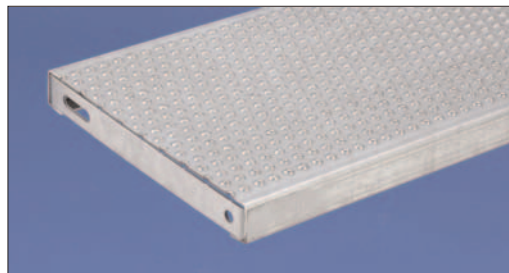
Stair Treads & Carrier Plates



Perf-O-Grip Stair Treads (standard)

Specify original Perf-O-Grip or Perf-O-Grip 2 Stair Treads. All treads have welded ends for attachment to stringers.

- Mill-galvanized steel: 11 ga and 13 ga.
- Hot rolled, pickled and oiled carbon steel: 11 ga. and 13 ga.
- 24", 30" and 36" lengths.
- 5", 7" 10" and 12" (nominal) widths.
- 1 1/2" and 2" channel heights.

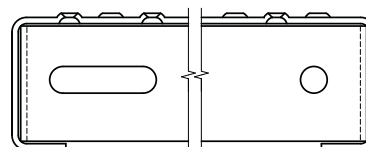


Stair Treads (custom)

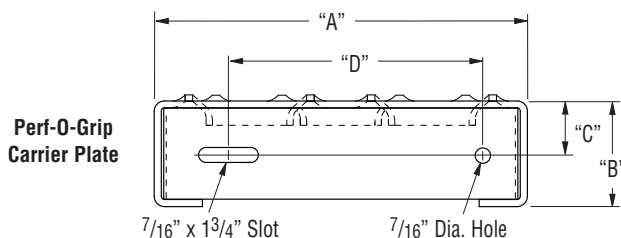
Stair Treads are also available with Traction Tread™ and other options. Consult factory with design questions.

Carrier Plates

Carrier Plates allow you to create your own custom stair treads. They are sold by the pair (2 plates = one pair).



Traction Tread Carrier Plate



Product	Nominal Width	"A"	"B"	"C"	"D"
2-Hole Tread	5" (127mm)	4 15/16" (125mm)	1 1/2" (38mm)	3/4" (19mm)	2" (51mm)
		4 15/16" (125mm)	2" (51mm)	1" (25mm)	2" (51mm)
3-Hole Tread	7" (178mm)	6 15/16" (176mm)	1 1/2" (38mm)	3/4" (19mm)	4" (102mm)
		6 15/16" (176mm)	2" (51mm)	1" (25mm)	4" (102mm)
5-Hole Tread	10" (254mm)	9 15/16" (254mm)	1 1/2" (38mm)	3/4" (19mm)	7" (178mm)
		9 15/16" (254mm)	2" (51mm)	1" (25mm)	7" (178mm)
6-Hole Tread	12" (305mm)	11 15/16" (303mm)	1 1/2" (38mm)	3/4" (19mm)	9" (227mm)
		11 15/16" (303mm)	2" (51mm)	1" (25mm)	9" (227mm)

Table for Perf-O-Grip Treads