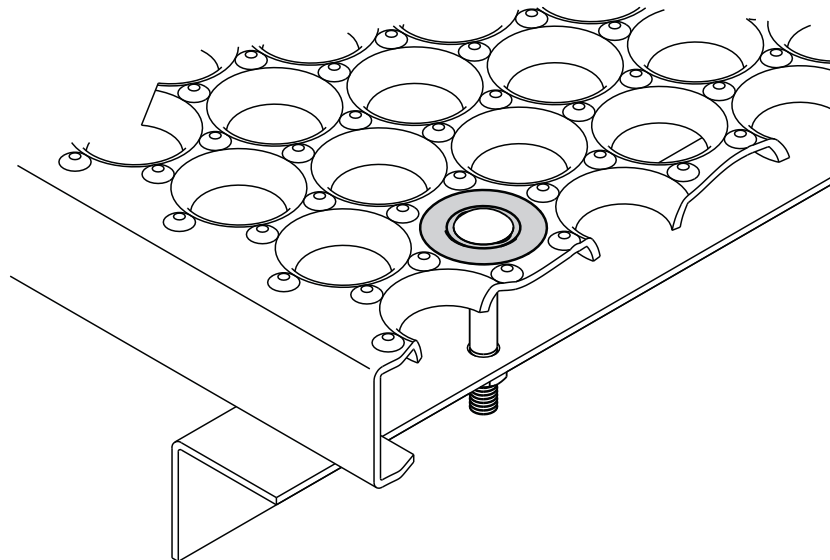
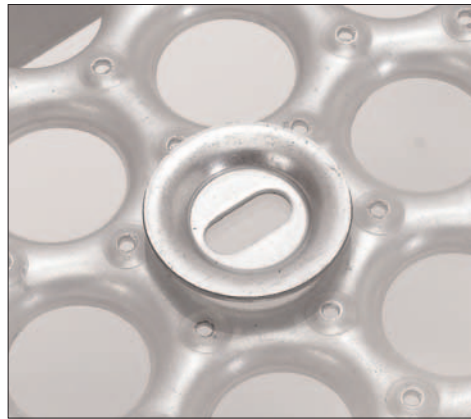


# Perf-O Grip® Accessories

## Bolt Seats

Perf-O-Grip Bolt Seats provide a secure anchor of the grating to structural supports. The standard bolt seat features oblong holes specifically designed to ensure a vertical anchor (with a  $\frac{3}{8}$ " bolt) even if the hole is off concentrically by as much as  $\frac{1}{4}$ ". Available in mill-galvanized steel, aluminum and stainless steel. Hardware is not provided.

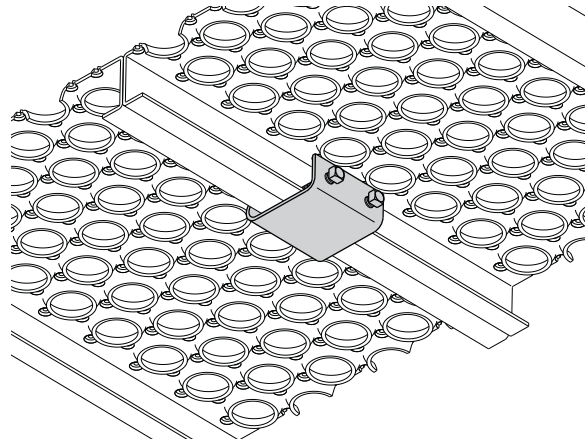
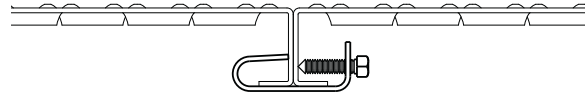
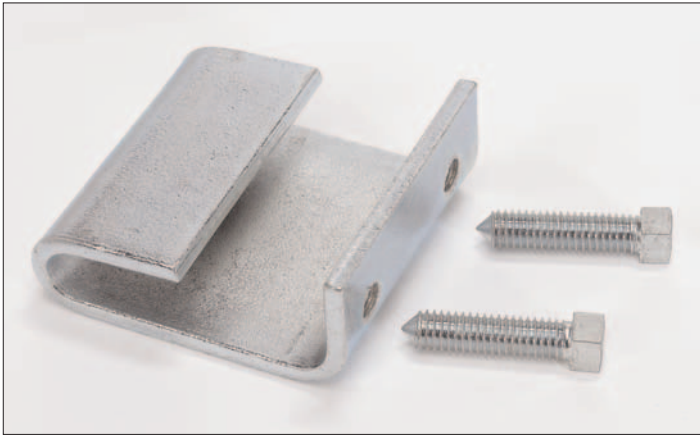
### P-Bolt Seat (standard)



## Grating Support Clips

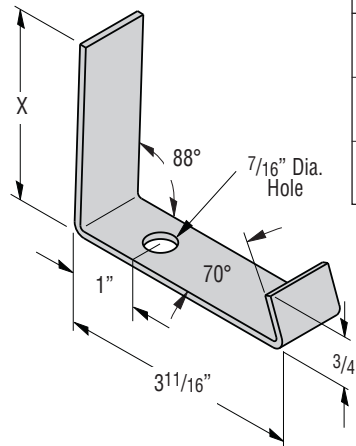
### Mid-Clip

Perf-O-Grip Midsupport clips can be used at midspan to increase load carrying capacities of individual channels by fastening several planks together to form an integral section. Midsupport Clip is manufactured from galvanized steel and includes two bolts.

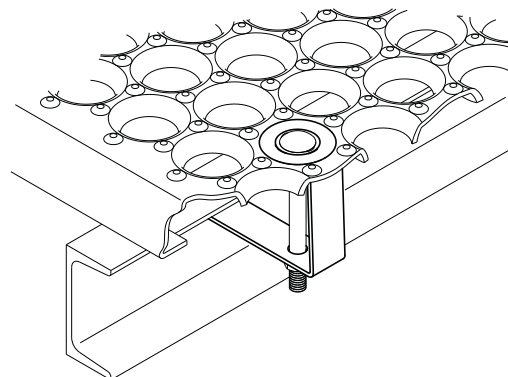


### J-Clip

Perf-O-Grip J-Clips fasten the grating securely to the supporting steel without drilling holes. Standard finish is galvanized. Hardware is not provided.



Grating Side Channel	Dimension X
1 1/2" (38mm)	2 3/16" (56mm)
2" (51mm)	2 11/16" (68mm)
3" (76mm)	2 11/16" (94mm)



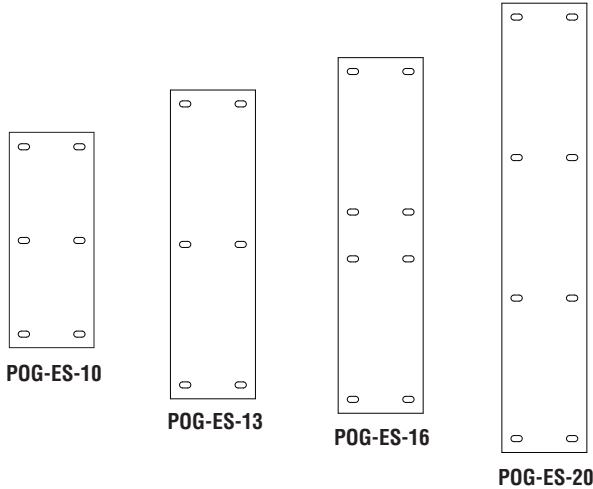
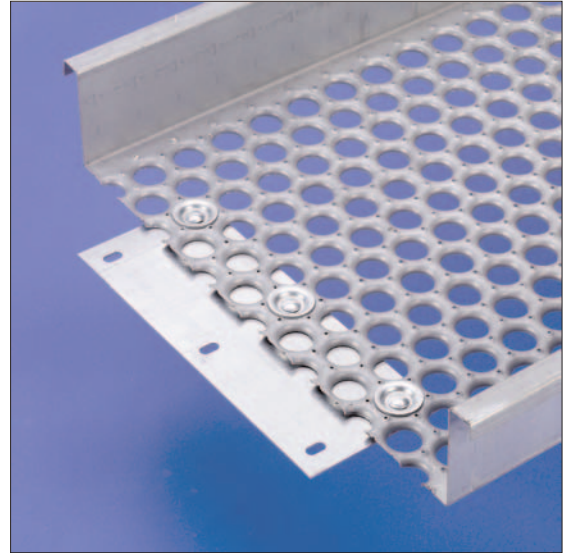
# Perf-O Grip® Accessories

## Splice Plate Kits

### Surface Splice Plate Kits

As width increases, grating surface performance becomes more critical. Thus, for Perf-O-Grip product widths greater than 12", use of the grating surface splice kit is recommended to mechanically join butt ends of plank sections.

- **POG-ES-10** for 18" wide plank includes six (6) each of hardware shown below.
- **POG-ES-13** for 24" wide plank includes six (6) each of hardware shown below.
- **POG-ES-16** for 30" wide plank includes eight (8) each of hardware shown below.
- **POG-ES-20** for 36" wide plank includes eight (8) each of hardware shown below.
- **Hardware included:**  $\frac{3}{8}$ " x 1" carriage bolts,  $\frac{3}{8}$ " flat washers and bolt seats.



### Walkway Splice Plate Kits

Walkway Splice Plates provide continuity when multiple lengths of Perf-O-Grip are desired. Connections are reinforced with the addition of splice plates attached to side channels.

- **POG-WS-30** for 24", 30" and 36" wide walkway.
- **Each Kit includes:** Two (2) splice plates and thirty-two (32) each of the following hardware:  $\frac{1}{2}$ " x  $1\frac{1}{4}$ " hex bolts,  $\frac{1}{2}$ "-13 hex nuts and  $\frac{1}{2}$ " flat washers.

