



Advantages 3

General Load Information 4 - 6

Multi-Plank Width Comparison Chart 7

Design Load Tables

 2-Diamond Planks - 9¹/₄" Width (Steel & Aluminum) 8 - 9

 3-Diamond Planks - 13³/₄" Width (Steel & Aluminum) 10 - 11

 5-Diamond Planks - 23¹/₄" Width (Steel) 12 - 13

 6-Diamond Planks - 27³/₄" Width (Steel) 14 - 15

 8-Diamond Planks - 36" Width (Steel) 16 - 17

Walkways

 5-Diamond - 24" Width (Steel) 18 - 19

 6-Diamond - 30" Width (Steel & Aluminum) 18 - 19

 8-Diamond - 36" Width (Steel) 18 - 19

Stair Treads 20 - 21

Special/Fabricated Products 22

Accessories

 Hold-Down Clip 22

 Walkway Splice Plates 22

 Handrail Brackets 23

Specifications 24 - 25

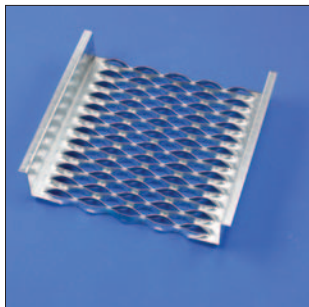
How To Order 26

H-Series

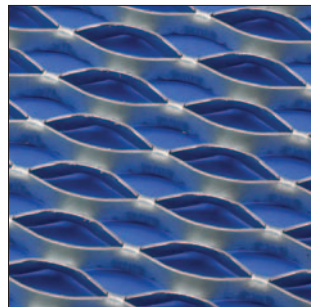
Heavy-Duty Grip Strut®

Gratings for Greater Loads, Safer Walking

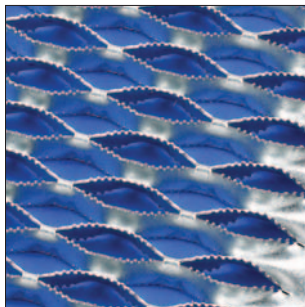
- High strength-to-weight ratio — efficient structural design means large-load capacity with low dead weight
- Slip resisting surface — scores of tiny teeth grip shoes tightly (exceeds Federal Specification RR-G-1602A slip-resistance requirements)
- Open design — sheds slip-causing stones, dirt and debris
- Slip-resisting serrated or less harsh non-serrated wearing surfaces tailor long life to diverse service conditions — sheds slip-causing stones, dirt and debris
- Complete line of products, design data, support services
- Handrail brackets available for maximum safety and meeting OSHA requirements
- Splice plates speed assembly without welding
- Integral, OSHA compliant toeboards. Canadian compliant OH&S designs available in some sizes.



Heavy Duty Grip Strut® Walkway
Cooper B-Line is the walkway specialist



Heavy Duty Grip Strut® Pattern
- No Teeth -
The best labor saving alternative to bar grating



Heavy Duty Grip Strut® Pattern
- Standard With Teeth -
Safety, self cleaning and self draining all-in-one



Heavy Duty Grip Strut® Walkway
-Reduced Opening -
Limits items from falling through openings for safety below