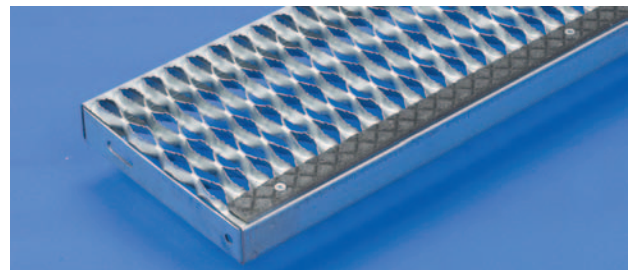
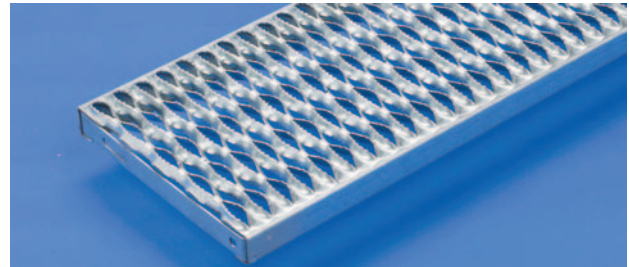


# Stair Tread Information



## Safe Loading — Stair Treads

Load data below takes eccentric loads into consideration. Although load values include allowances for normal impact conditions and usual pedestrian traffic, be sure to make provisions in the structural design for special uses and loads involving unusual impact forces or vibratory forces. Load-carrying capacity of stair treads increases as side channel height and gauge or material increase.



U=Uniform Load (lb./ft.<sup>2</sup>) C= Concentrated Load (lb.)

		2-Diamond 4 <sup>3</sup> / <sub>4</sub> " Depth				3-Diamond 7" Depth				4-Diamond 9 <sup>1</sup> / <sub>2</sub> " Depth				5-Diamond 11 <sup>3</sup> / <sub>4</sub> " Depth			
Material		Steel				Steel				Steel				Steel			
Gauge		14		12		14		12		14		12		14		12	
Span	Channel Depth - in. (mm)	U	C	U	C	U	C	U	C	U	C	U	C	U	C	U	C
2'-0"	1 <sup>1</sup> / <sub>2</sub> " (38.1)	1191	472	1576	624	761	443	1006	587	549	435	750	595	434	425	575	563
	2" (50.8)	1978	783	2513	995	1262	737	1604	936	911	604	1158	917	721	573	916	897
2'-6"	1 <sup>1</sup> / <sub>2</sub> " (38.1)	764	378	1011	500	488	356	645	470	353	349	481	476	278	342	369	452
	2" (50.8)	1268	611	1611	797	810	590	1029	750	584	578	742	734	463	566	587	719
3'-0"	1 <sup>1</sup> / <sub>2</sub> " (38.1)	532	315	703	418	340	300	450	393	245	300	335	398	194	300	258	378
	2" (50.8)	882	524	1121	665	563	492	716	626	407	483	517	614	322	473	409	601
4'-0" (1)	2" (50.8)	498	394	633	501	318	372	404	472	230	364	292	463	182	356	232	454

(1) Intermediate stringer is recommended for spans over 4'-0".

		2-Diamond 4 <sup>3</sup> / <sub>4</sub> " Depth				3-Diamond 7" Depth				4-Diamond 9 <sup>1</sup> / <sub>2</sub> " Depth				4-Diamond 9 <sup>1</sup> / <sub>2</sub> " Depth				5-Diamond 11 <sup>3</sup> / <sub>4</sub> " Depth				5-Diamond 11 <sup>3</sup> / <sub>4</sub> " Depth			
Material		Aluminum				Aluminum				Aluminum				Stainless Steel				Aluminum				Stainless Steel			
Gauge		.080"		.100"		.080"		.100"		.080"		.100"		304		316L		.080"		.100"		304		316L	
Span	Channel Depth in. (mm)	U	C	U	C	U	C	U	C	U	C	U	C	U	C	U	C	U	C	U	C	U	C	U	C
2'-0"	2" (50.8)	1328	526	1862	737	862	503	1208	705	607	481	867	687	610	483	525	416	396	388	607	595	394	386	338	331
2'-6"	2" (50.8)	850	420	1191	590	551	402	773	564	388	392	555	550	390	387	336	336	253	388	388	540	252	381	216	339
3'-0"	2" (50.8)	590	350	827	491	383	335	537	470	270	327	385	458	271	323	233	279	176	321	270	450	175	319	150	275
4'-0" (1)	2" (50.8)	332	263	465	369	215	252	302	353	152	245	216	344	152	244	131	210	99	241	151	338	98	241	84	221

(1) Intermediate stringer is recommended for spans over 4'-0".



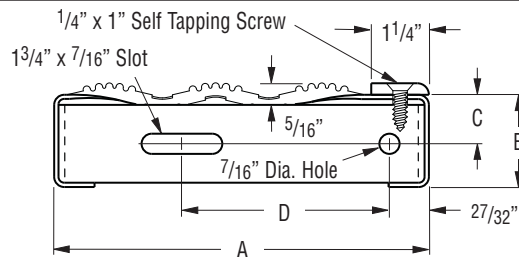
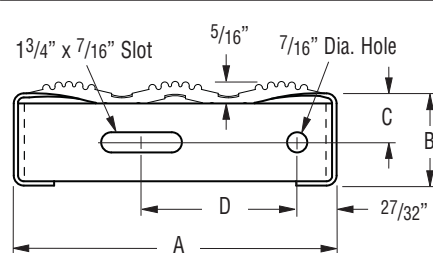
# Stair Tread Information

## Standard Sizes and Recommended Spans (1)

Steel			Standard Stair Treads		Stair Treads with Abrasive Nosing	
Span in.	Gauge	Channel Depth - in.	Catalog Number	Size in.	Catalog Number	Size in.
Up to 30"	14	1 1/2"	T-21514	2-Diamond - 4 3/4"	--	--
			T-31514	3-Diamond - 7"	T-31514-N	3-Diamond - 8 1/8"
			T-41514	4-Diamond - 9 1/2"	T-41514-N	4-Diamond - 10 1/2"
			T-51514	5-Diamond - 11 3/4"	--	--
30" to 36"	14	1 1/2"	T-21514	2-Diamond - 4 3/4"	--	--
			T-31514	3-Diamond - 7"	T-31514-N	3-Diamond - 8 1/8"
			T-41514	4-Diamond - 9 1/2"	T-41514-N	4-Diamond - 10 1/2"
			T-51514	5-Diamond - 11 3/4"	--	--
36" to 42"	14 ga.	1 1/2"	T-21514	2-Diamond - 4 3/4"	--	--
			T-31514	3-Diamond - 7"	T-31514-N	3-Diamond - 8 1/8"
			T-41514	4-Diamond - 9 1/2"	T-41514-N	4-Diamond - 10 1/2"
			T-51514	5-Diamond - 11 3/4"	--	--
42" to 48"	14 ga.	2"	T-21514	2-Diamond - 4 3/4"	--	--
			T-31514	3-Diamond - 7"	T-31514-N	3-Diamond - 8 1/8"
			T-41514	4-Diamond - 9 1/2"	T-41514-N	4-Diamond - 10 1/2"
			T-51514	5-Diamond - 11 3/4"	--	--
<b>Aluminum</b>						
Up to 42"	.080"	2"	T-22012-A	2-Diamond - 4 3/4"	--	--
			T-32012-A	3-Diamond - 7"	T-32012-A-N	3-Diamond - 8 1/8"
			T-42012-A	4-Diamond - 9 1/2"	T-42012-A-N	4-Diamond - 10 1/2"
			T-52012-A	5-Diamond - 11 3/4"	--	--
Up to 48"	.100"	2"	T-22010-A*	2-Diamond - 4 3/4"	--	--
			T-32010-A*	3-Diamond - 7"	T-32010-A-N	3-Diamond - 8 1/8"
			T-42010-A*	4-Diamond - 9 1/2"	T-42010-A-N	4-Diamond - 10 1/2"
			T-52010-A*	5-Diamond - 11 3/4"	--	--
<b>Stainless Steel</b>						
Up to 30"	Type 316L 16 ga.	2"	T-42016-SL	4-Diamond - 9 1/2"	--	--
			T-52016-SL	5-Diamond - 11 3/4"	--	--
Up to 36"	Type 304 16 ga.	2"	T-42012-A	4-Diamond - 9 1/2"	--	--
			T-52012-A	5-Diamond - 11 3/4"	--	--

(1) Recommendations are based on approximate minimum loads of 300 lbs. concentrated; 100 lbs. uniform. Specific performance criteria may vary by municipality/building code body and should be locally checked prior to finalizing specifications.

\* Available on special order.



## Steel, Aluminum and Stainless Steel (1)

Standard				With Abrasive Nosing			
A	B	C	D	A	B	C	D
4 3/4" (2-Diamond)	1 1/2" 2"	3/4" 1"	2 5/8" 2 5/8"	-- --	-- --	-- --	-- --
7" (3-Diamond)	1 1/2" 2"	3/4" 1"	3 3/8" 3 3/8"	8 1/8" (3-Diamond)	1 1/2" 2"	3/4" 1"	4 1/2" 4 1/2"
9 1/2" (4-Diamond)	1 1/2" 2"	3/4" 1"	5 7/8" 5 7/8"	10 1/2" (4-Diamond)	1 1/2" 2"	3/4" 1"	6 7/8" 6 7/8"
11 3/4" (5-Diamond)	1 1/2" 2"	3/4" 1"	8 1/8" 8 1/8"	-- --	-- --	-- --	-- --

(1) Stainless Steel not available in 2-Diamond or 3-Diamond widths.