



Plank Accessories / Installation

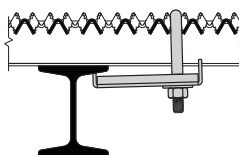
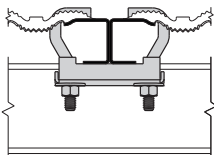
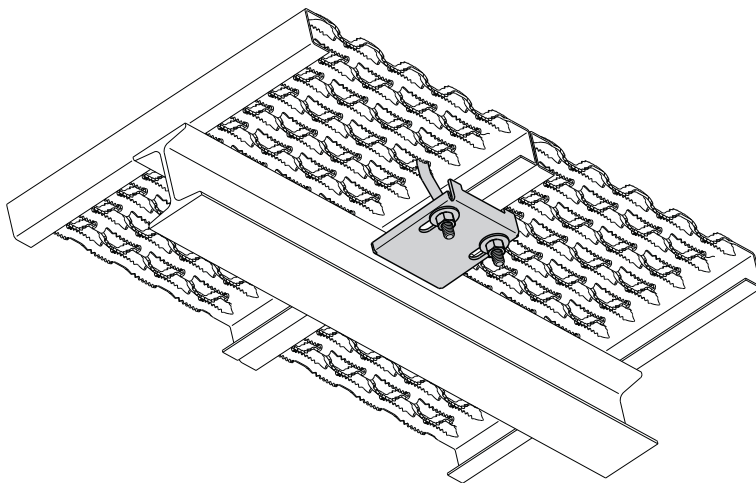
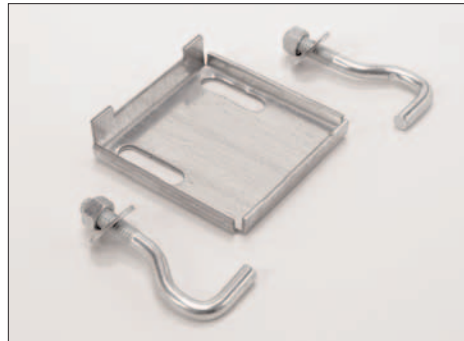
Utilizing the methods below, Grip Strut Safety Grating is easily installed.

Anchor and Clamp Assembly

Clamp prevents grating from shifting on supports. Holds pieces together with or without clearance between panels. All bolts are below top surface of grating. No holes are drilled in supporting members.

Assembly consists of anchor plate, 2 J-bolts, nuts and washers all electro zinc plated. Standard finish is hot dipped galvanized before fabrication.

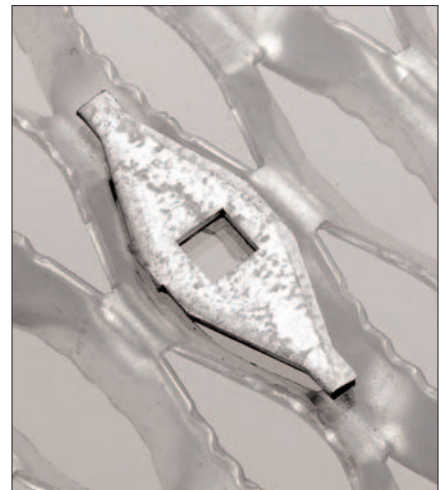
Channel Depth	Catalog Number
1 1/2"	ACA-15
2"	ACA-20
2 1/2"	ACA-25
3"	ACA-30



Anchoring Device Clip

Diamond Anchor cat. no. 12262 is shaped to fit in diamond opening. Punched to receive 5/16" carriage head bolt with square shank. Does not include bolts, nuts or washers.

Standard finish is hot-dipped galvanized before fabrication. Also available in 304 stainless steel.





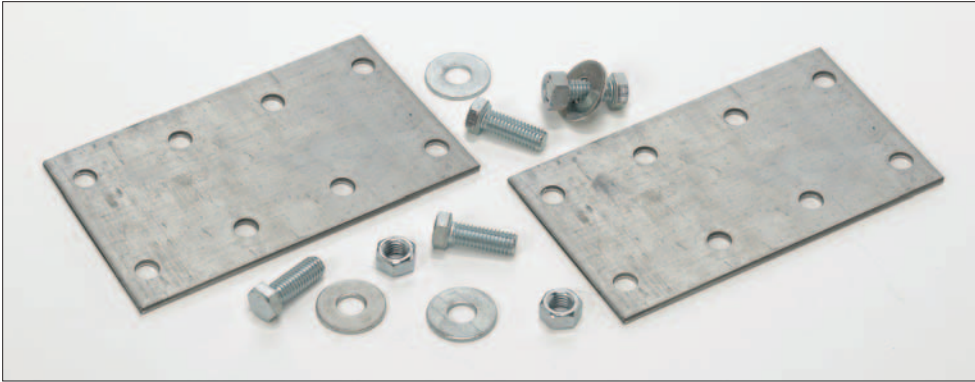
Splice Plate Package — 7 inch

Package (cat. no. SP-10DU-7) includes:

Two (2) 8-hole 10 gauge 4" x 7" splice plates, and sixteen (16) each 1/2" x 1 1/4" hex head cap screws (galv. S.A.E. Grade 5, lightly oiled), washers and hex nuts. Kit joins continuous sections together in a run only over supports.

Note: Contact factory for information on pre-punched holes in grating.

Recommended Bolt Torque - 55 ft./lbs. minimum



Splice Plate Kit — 30 inch

Package (cat. no. SP-10DU-30) includes:

Two (2) 8-hole 12 gauge 4 1/2" x 30" C-channel splice plates, and sixteen (16) each 7/16" x 1 1/4" bolts, washers and hex nuts. Kit joins continuous sections together in a run over clear spans to act as one continuous unit. Any combination of 12'-0" and 10'-0" planks can be joined with splice plate package.

Note: Contact factory for information on pre-punched holes in grating.

Recommended Bolt Torque - 55 ft./lbs. minimum

