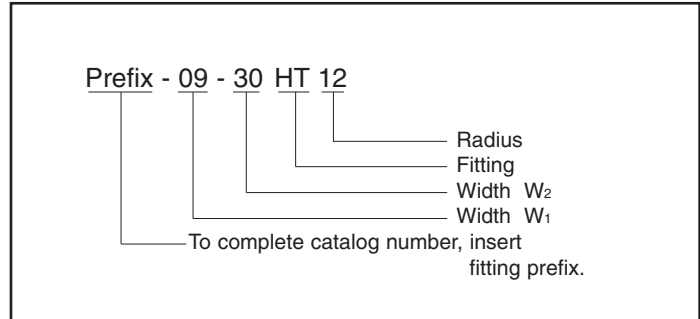
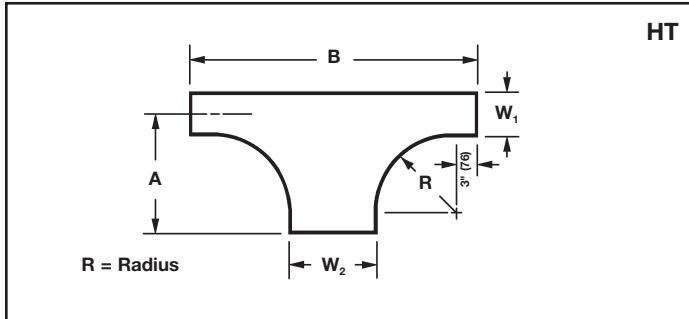
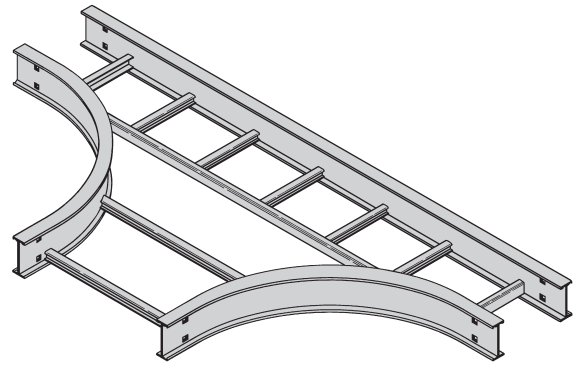


Series 2, 3, 4, & 5 - Fittings

Horizontal Expanding Tee (HT)

2 pair splice plates with hardware included.



Series 2, 3, 4, & 5 Fittings

| Tray Width | | | | *Insert Radius (12", 24", 36", or 48") Catalog No. | 12" Radius | | | | 24" Radius | | | | 36" Radius | | | | 48" Radius | | | | | |
|------------|------|-----|------|--|------------|--------------------|----|------|------------|------|----|------|------------|------|-----|------|------------|------|-----|------|-----|------|
| W1 | | W2 | | | A | | B | | A | | B | | A | | B | | A | | B | | | |
| in. | mm | in. | mm | in. | mm | in. | mm | in. | mm | in. | mm | in. | mm | in. | mm | in. | mm | in. | mm | in. | mm | |
| 6 | 152 | 9 | 228 | (Prefix)-06-09-HT* | 18 | 457 | 39 | 991 | 30 | 762 | 63 | 1600 | 42 | 1067 | 87 | 2210 | 54 | 1372 | 111 | 2819 | | |
| | | 12 | 305 | (Prefix)-06-12-HT* | 18 | 457 | 42 | 1067 | 30 | 762 | 66 | 1676 | 42 | 1067 | 90 | 2286 | 54 | 1372 | 114 | 2496 | | |
| | | 18 | 457 | (Prefix)-06-18-HT* | 18 | 457 | 48 | 1219 | 30 | 762 | 72 | 1829 | 42 | 1067 | 96 | 2438 | 54 | 1372 | 120 | 3048 | | |
| | | 24 | 609 | (Prefix)-06-24-HT* | 18 | 457 | 54 | 1372 | 30 | 762 | 78 | 1981 | 42 | 1067 | 102 | 2591 | 54 | 1372 | 126 | 3200 | | |
| | | 30 | 762 | (Prefix)-06-30-HT* | 18 | 457 | 60 | 1524 | 30 | 762 | 84 | 2134 | 42 | 1067 | 108 | 2743 | 54 | 1372 | 132 | 3353 | | |
| | | 36 | 914 | (Prefix)-06-36-HT* | 18 | 457 | 66 | 1676 | 30 | 762 | 90 | 2286 | 42 | 1067 | 114 | 2895 | 54 | 1372 | 138 | 3503 | | |
| | | 42 | 1067 | (Prefix)-06-42-HT* | 18 | 457 | 72 | 1829 | 30 | 762 | 96 | 2438 | 42 | 1067 | 120 | 3048 | 54 | 1372 | 144 | 3658 | | |
| 9 | 228 | 12 | 305 | (Prefix)-09-12-HT* | 19 1/2 | 496 | 42 | 1067 | 31 1/2 | 800 | 66 | 1676 | 43 1/2 | 1105 | 90 | 2286 | 55 1/2 | 1410 | 114 | 2496 | | |
| | | 18 | 457 | (Prefix)-09-18-HT* | 19 1/2 | 496 | 48 | 1219 | 31 1/2 | 800 | 72 | 1829 | 43 1/2 | 1105 | 96 | 2438 | 55 1/2 | 1410 | 120 | 3048 | | |
| | | 24 | 609 | (Prefix)-09-24-HT* | 19 1/2 | 496 | 54 | 1372 | 31 1/2 | 800 | 78 | 1981 | 43 1/2 | 1105 | 102 | 2591 | 55 1/2 | 1410 | 126 | 3200 | | |
| | | 30 | 762 | (Prefix)-09-30-HT* | 19 1/2 | 496 | 60 | 1524 | 31 1/2 | 800 | 84 | 2134 | 43 1/2 | 1105 | 108 | 2743 | 55 1/2 | 1410 | 132 | 3353 | | |
| | | 36 | 914 | (Prefix)-09-36-HT* | 19 1/2 | 496 | 66 | 1676 | 31 1/2 | 800 | 90 | 2286 | 43 1/2 | 1105 | 114 | 2895 | 55 1/2 | 1410 | 138 | 3503 | | |
| | | 42 | 1067 | (Prefix)-09-42-HT* | 19 1/2 | 496 | 72 | 1829 | 31 1/2 | 800 | 96 | 2438 | 43 1/2 | 1105 | 120 | 3048 | 55 1/2 | 1410 | 144 | 3658 | | |
| | | 12 | 305 | 18 | 457 | (Prefix)-12-18-HT* | 21 | 533 | 48 | 1219 | 33 | 838 | 72 | 1829 | 45 | 1143 | 96 | 2438 | 57 | 1448 | 120 | 3048 |
| 24 | 609 | | | (Prefix)-12-24-HT* | 21 | 533 | 54 | 1372 | 33 | 838 | 78 | 1981 | 45 | 1143 | 102 | 2591 | 57 | 1448 | 126 | 3200 | | |
| 30 | 762 | | | (Prefix)-12-30-HT* | 21 | 533 | 60 | 1524 | 33 | 838 | 84 | 2134 | 45 | 1143 | 108 | 2743 | 57 | 1448 | 132 | 3353 | | |
| 36 | 914 | | | (Prefix)-12-36-HT* | 21 | 533 | 66 | 1676 | 33 | 838 | 90 | 2286 | 45 | 1143 | 114 | 2895 | 57 | 1448 | 138 | 3503 | | |
| 42 | 1067 | | | (Prefix)-12-42-HT* | 21 | 533 | 72 | 1829 | 33 | 838 | 96 | 2438 | 45 | 1143 | 120 | 3048 | 57 | 1448 | 144 | 3658 | | |
| 18 | 457 | | | 24 | 609 | (Prefix)-18-24-HT* | 24 | 609 | 54 | 1372 | 36 | 914 | 78 | 1981 | 48 | 1219 | 102 | 2591 | 60 | 1524 | 126 | 3200 |
| | | | | 30 | 762 | (Prefix)-18-30-HT* | 24 | 609 | 60 | 1524 | 36 | 914 | 84 | 2134 | 48 | 1219 | 108 | 2743 | 60 | 1524 | 132 | 3353 |
| | | 36 | 914 | (Prefix)-18-36-HT* | 24 | 609 | 66 | 1676 | 36 | 914 | 90 | 2286 | 48 | 1219 | 114 | 2895 | 60 | 1524 | 138 | 3503 | | |
| | | 42 | 1067 | (Prefix)-18-42-HT* | 24 | 609 | 72 | 1829 | 36 | 914 | 96 | 2438 | 48 | 1219 | 120 | 3048 | 60 | 1524 | 144 | 3658 | | |
| | | 24 | 609 | 30 | 762 | (Prefix)-24-30-HT* | 27 | 686 | 60 | 1524 | 39 | 991 | 84 | 2134 | 51 | 1295 | 108 | 2743 | 63 | 1600 | 132 | 3353 |
| | | | | 36 | 914 | (Prefix)-24-36-HT* | 27 | 686 | 66 | 1676 | 39 | 991 | 90 | 2286 | 51 | 1295 | 114 | 2895 | 63 | 1600 | 138 | 3503 |
| | | | | 42 | 1067 | (Prefix)-24-42-HT* | 27 | 686 | 72 | 1829 | 39 | 991 | 96 | 2438 | 51 | 1295 | 120 | 3048 | 63 | 1600 | 144 | 3658 |
| 30 | 762 | 36 | 914 | (Prefix)-30-36-HT* | 30 | 762 | 66 | 1676 | 42 | 1067 | 90 | 2286 | 54 | 1372 | 114 | 2895 | 66 | 1676 | 138 | 3503 | | |
| | | 42 | 1067 | (Prefix)-30-42-HT* | 30 | 762 | 72 | 1829 | 42 | 1067 | 96 | 2438 | 54 | 1372 | 120 | 3048 | 66 | 1676 | 144 | 3658 | | |
| 36 | 914 | 42 | 1067 | (Prefix)-36-42-HT* | 33 | 838 | 72 | 1829 | 45 | 1143 | 96 | 2438 | 57 | 1448 | 120 | 3048 | 69 | 1753 | 144 | 3658 | | |

(Prefix) See page 288 for catalog number prefix.

All dimensions in parentheses are millimeters unless otherwise specified.

Width dimensions are to inside wall. For aluminum fittings add 1.5 inches for total outside width.

Manufacturing tolerances apply to all dimensions.