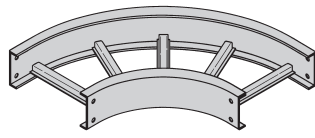


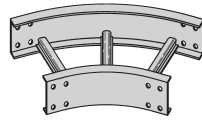
# Series 1 Steel - Fittings

## Horizontal Bends 90° 60° 45° 30° (HB)

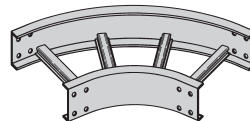
1 pair splice plates with hardware included.



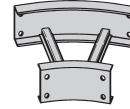
90° Horizontal Bend



45° Horizontal Bend

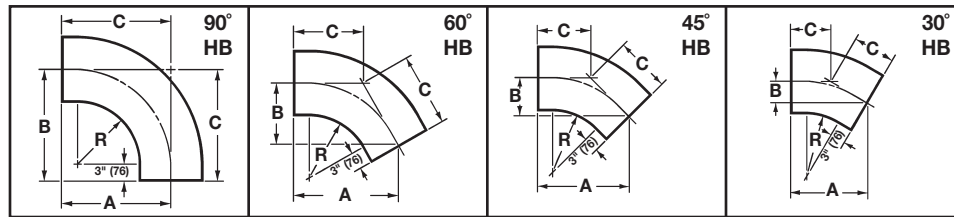


60° Horizontal Bend



30° Horizontal Bend

**Bottoms manufactured:**  
 Ladder = 9" Rung Spacing  
 VT & 04 = 4" Rung Spacing  
 ST & SB = Flat sheet over  
 12" Rung Spacing



Bend Radius R	Tray Width		90° Horizontal Bend Dimensions						60° Horizontal Bend Dimensions							
			Catalog No.	A		B		C		Catalog No.	A		B		C	
in. (mm)	in. (mm)	in. (mm)		in. (mm)	in. (mm)	in. (mm)	in. (mm)		in. (mm)	in. (mm)	in. (mm)	in. (mm)	in. (mm)	in. (mm)	in. (mm)	in. (mm)
12	305	6 152	(Pre)-06-90HB12	18	450	18	450	18	450	(Pre)-06-60HB12	17½	445	10⅞	257	11⅞	297
		9 228	(Pre)-09-90HB12	19½	495	19½	495	19½	495	(Pre)-09-60HB12	18⅜	478	10⅞	276	12½	318
		12 305	(Pre)-12-90HB12	21	533	21	533	21	533	(Pre)-12-60HB12	20⅞	510	11⅞	295	13⅞	340
		18 457	(Pre)-18-90HB12	24	600	24	600	24	600	(Pre)-18-60HB12	22⅞	576	13⅞	333	15⅞	384
		24 609	(Pre)-24-90HB12	27	686	27	686	27	686	(Pre)-24-60HB12	25⅞	643	14⅞	372	16⅞	429
		30 762	(Pre)-30-90HB12	30	750	30	750	30	750	(Pre)-30-60HB12	27⅞	708	16⅞	410	18⅞	472
		36 914	(Pre)-36-90HB12	33	838	33	838	33	838	(Pre)-36-60HB12	30½	775	17⅞	448	20⅞	516
24	609	6 152	(Pre)-06-90HB24	30	750	30	750	30	750	(Pre)-06-60HB24	27⅞	708	16⅞	410	18⅞	472
		9 228	(Pre)-09-90HB24	31½	800	31½	800	31½	800	(Pre)-09-60HB24	29⅞	741	16⅞	429	19⅞	494
		12 305	(Pre)-12-90HB24	33	838	33	838	33	838	(Pre)-12-60HB24	30½	775	17⅞	448	20⅞	516
		18 457	(Pre)-18-90HB24	36	914	36	914	36	914	(Pre)-18-60HB24	33⅞	840	19⅞	486	22⅞	560
		24 609	(Pre)-24-90HB24	39	991	39	991	39	991	(Pre)-24-60HB24	35⅞	907	20⅞	524	23⅞	605
		30 762	(Pre)-30-90HB24	42	1067	42	1067	42	1067	(Pre)-30-60HB24	38¼	972	22⅞	562	25½	648
		36 914	(Pre)-36-90HB24	45	1143	45	1143	45	1143	(Pre)-36-60HB24	40⅞	1038	23⅞	600	27¼	692
45° Horizontal Bend									30° Horizontal Bend							
12	305	6 152	(Pre)-06-45HB12	15¾	400	6½	165	9⅞	233	(Pre)-06-30HB12	13⅞	333	3½	89	7	175
		9 228	(Pre)-09-45HB12	16⅞	427	6⅞	176	9⅞	249	(Pre)-09-30HB12	13⅞	352	3⅞	94	7⅞	189
		12 305	(Pre)-12-45HB12	17⅞	454	7⅞	187	10⅞	265	(Pre)-12-30HB12	14⅞	372	3⅞	100	7⅞	198
		18 457	(Pre)-18-45HB12	20	500	8¼	210	11⅞	297	(Pre)-18-30HB12	16⅞	410	4⅞	135	8⅞	219
		24 609	(Pre)-24-45HB12	22⅞	560	9⅞	232	12⅞	329	(Pre)-24-30HB12	17⅞	448	4⅞	119	9⅞	240
		30 762	(Pre)-30-45HB12	24⅞	614	10	250	14⅞	360	(Pre)-30-30HB12	19⅞	486	5⅞	130	10¼	260
		36 914	(Pre)-36-45HB12	26⅞	668	10⅞	278	15⅞	392	(Pre)-36-30HB12	20⅞	524	5½	140	11⅞	281
24	609	6 152	(Pre)-06-45HB24	24⅞	614	10	250	14⅞	360	(Pre)-06-30HB24	19⅞	486	5⅞	130	10¼	260
		9 228	(Pre)-09-45HB24	25¼	641	10½	267	14⅞	376	(Pre)-09-30HB24	19⅞	505	5⅞	135	10⅞	270
		12 305	(Pre)-12-45HB24	26⅞	668	10⅞	278	15⅞	392	(Pre)-12-30HB24	20⅞	524	5½	140	11⅞	281
		18 457	(Pre)-18-45HB24	28⅞	722	11⅞	300	16⅞	424	(Pre)-18-30HB24	22⅞	562	5⅞	151	11⅞	300
		24 609	(Pre)-24-45HB24	30⅞	776	12⅞	322	17⅞	456	(Pre)-24-30HB24	23⅞	600	6⅞	160	12⅞	321
		30 762	(Pre)-30-45HB24	32⅞	830	13⅞	345	19⅞	486	(Pre)-30-30HB24	25⅞	638	6¾	172	13⅞	341
		36 914	(Pre)-36-45HB24	34⅞	884	14⅞	367	20⅞	518	(Pre)-36-30HB24	26⅞	676	7⅞	181	14¼	362

(Pre) See page 216 for catalog number prefix. All dimensions in parentheses are millimeters unless otherwise specified. Width dimensions are to inside wall. Manufacturing tolerances apply to all dimensions.