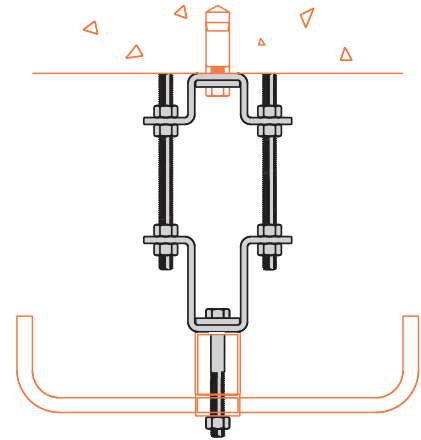


Non-Uniform Loading Bracket

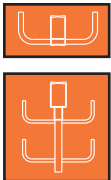
Cat. No.	ATR Length
● CZN-DRS-36	36
● CZN-DRS-60	60
● CZN-DRS-72	72



- Hardware included
- ATR included
- Zinc plated
- See Seismic Restraints Cent-R-Rail Supplement brochure (SRSCR1)
- Note: Refer to unbalance section in the appendix (pg. 171)

Includes:

- 1 - B107 Znplt U Support
- 1 - B107-22A Znplt U Support
- 9 - 1/2" Hex Nuts, Znplt
- 2 - ATR 1/2" x Length, Znplt
- 1 - HHC Screw 1/2" x 4 1/2", Znplt
- 2 - B202 Znplt sq washers

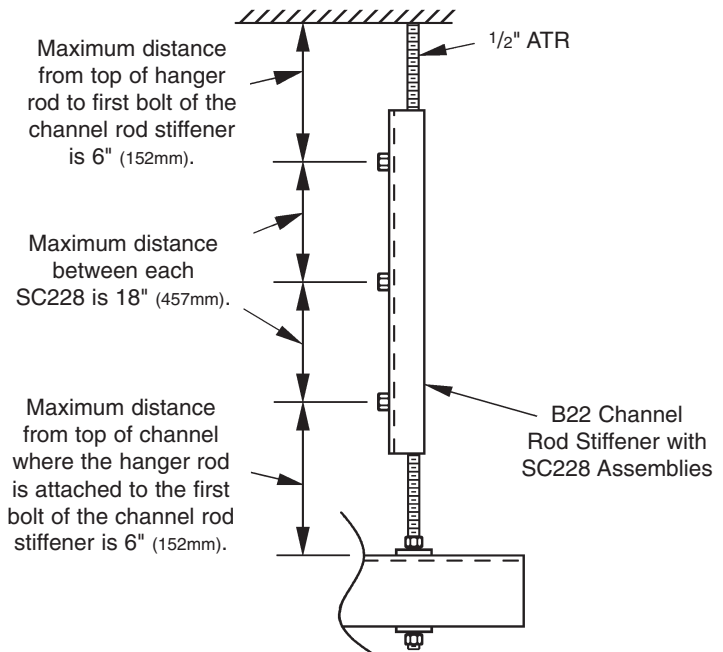
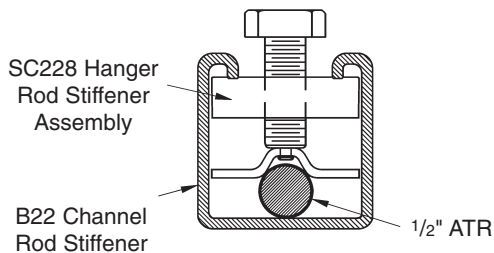


All Threaded Rod Stiffener

- See Seismic Restraints Cent-R-Rail Supplement brochure (SRSCR1)
- Note: Minimum of (2) - SC228 or SC-UB are required per rod.

Cat. No.
● SC228

SC228 Hanger Rod Stiffener Assembly
For 3/8" thru 5/8" ATR
(Order B22 Channel Separately)



● Green = Fastest shipped items ● Black = Normal lead-time items ● Red = Normally long lead-time items