

Concrete Inserts & Threaded Rod

Continuous Concrete Insert

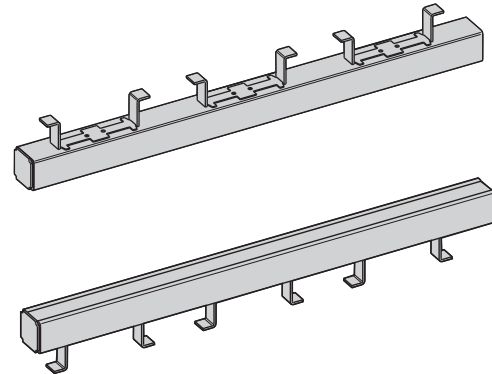
Catalog Number for		Channel Size	Maximum Depth	Load
120" (10 ft.)	240" (20 ft.)			
B22I-120	B22I-240	B22	1 5/8"	2000 lbs./ft.
B32I-120	B32I-240	B32	1 3/8"	2000 lbs./ft.
B52I-120	B52I-240	B52	1 3/16"	1500 lbs./ft.

Safety factor of 3 on loading.

Other lengths available upon request.

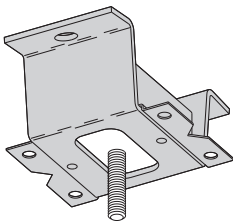
Furnished with end caps and styrofoam filler installed.

Standard finishes:
 Plain (Oil Coated)
 Dura Green Epoxy
 Pre-Galvanized
 Hot Dip Galvanized

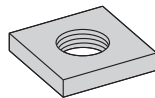


B2500 Spot Insert & N2500 Insert Nut

Standard Finish: Zinc Plated



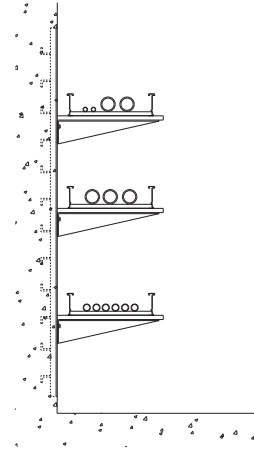
B2500 Insert



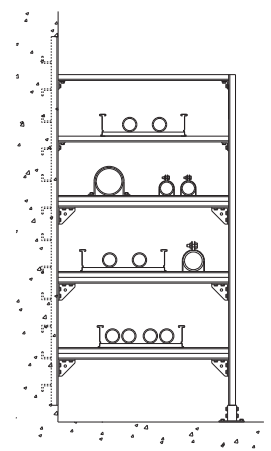
N2500 Insert Nut
 Insert rod size behind part number.

Square Nuts for Spot Inserts

Concrete Insert Applications

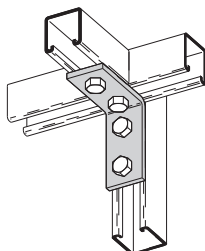


Continuous inserts used vertically are ideal mounting bases for cable tray brackets.

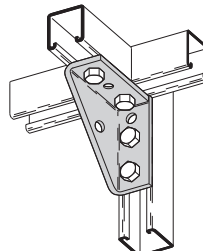


For multi-tiered tray assemblies, inserts function as the anchors for each stanchion.

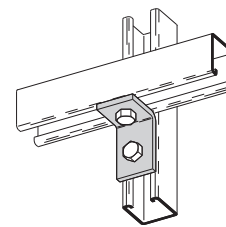
Angle Fittings



B104



B844



B101