

Channel Nuts & Hardware

Channel Nuts

Cooper B-Line's channel nut is one of the main components of our metal framing system. It is designed to provide essential gripping power and ease during installation. Channel nuts are press formed, machined and hardened from steel which meets the requirements of ASTM A108 or ASTM A36 for our larger sizes.

Bolts, Screws, and Nuts

All bolts, screws and nuts meet the physical and chemical requirements of ASTM A307, SAE J429 or ASTM A563, and have unified inch screw threads (coarse, UNC). ISO metric threads are also available on special request.

Recommended Torque

Bolt Size	1/4"-20	5/16"-18	3/8"-16	1/2"-13
Foot/Lbs.	6	11	19	50
Nm	8	15	26	68

Bolt Size	M6x1	M8 x1.25	M10 x 1.5	M12x1.75
NM	12	17	36	62
Foot/Lbs.	9	13	27	46

Materials & Finishes*

Finish Code	Finish	Specification
PLN	Plain	ASTM A108/A307 Gr. A, ASTM A563, SAE J429
ZN	Electro-Plated Zinc	ASTM B633 SC1 Type III
CZ	Chromium Zinc	ASTM F1136 Gr. 3
HDG	Hot-Dipped Galvanized	ASTM A153
SS4	Stainless Steel Type 304	ASTM F593
SS6	Stainless Steel Type 316	MPIF 35/ASTM A593
AL	Aluminum	ASTM F468 S4

*Unless otherwise noted.

Note: Channel nuts are not available in HDG or Aluminum

Metric

Metric dimensions are shown in parentheses. Unless noted, all metric dimensions are in millimeters.



STANDARD CHANNEL NUTS

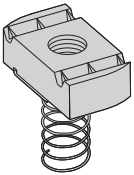
Numbering Example: **N 7 25 (*) WO**

Nut Type	Channel Type	Thread Size	Stud Length	Suffix
N = Standard Nut	7 = Tall Channels	21 = #8-32	* = Specify Length of stud below for Stud Nut or Twirl Stud Nuts	WO = Without Spring
TN = Twirl Nut	B11	22 = #10-24	$\frac{3}{4}$ = $\frac{3}{4}$ "	** = Twirl Nuts or nuts with springs have blank suffix
SN = Stud Nut	B12	27 = #10-32	1 = 1"	
STN = Stud Twirl Nut	2 = Medium Channels	24 = $\frac{1}{4}$ -20	$1\frac{1}{4}$ = $1\frac{1}{4}$ "	
NW = Combo Nut Washer	B22	23 = $\frac{5}{16}$ -18	$1\frac{1}{2}$ = $1\frac{1}{2}$ "	
	B24	28 = $\frac{3}{8}$ -16		
	B26	26 = $\frac{7}{16}$ -14		
	B32	25 = $\frac{1}{2}$ -13		
	5 = Short Channels	55 = $\frac{5}{8}$ -11		
	B42	75 = $\frac{5}{8}$ -11		
	B52	78 = $\frac{7}{8}$ -9		
	B54			
	B56			

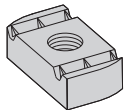
METRIC CHANNEL NUTS

Numbering Example: **BMS 6 M**

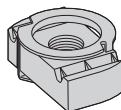
Nut Type	Metric Thread Size	Suffix
BMS = Spring Nut	3 = M3.5	S = Short Spring
BMS-D = Spring Nut ($\frac{1}{2}$ " thick)	4 = M4	M = Medium Spring
BMT = Twirl Nut	5 = M5	L = Long Spring
BMT-D = Twirl Nut ($\frac{1}{2}$ " thick)	6 = M6	* = Twirl Nuts and nuts without springs have blank suffix
BMM = Spring Nut (Mini channel)	8 = M8	
	10 = M10	
	12 = M12	



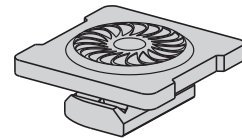
SPRING NUT



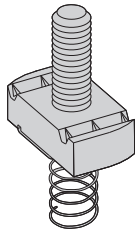
NUT WITHOUT SPRING



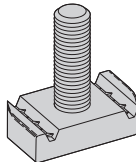
TWIRL-NUT™



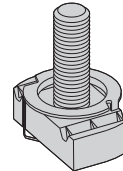
COMBO NUT WASHER



STUD NUT WITH SPRING

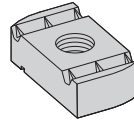


STUD NUT WITHOUT SPRING



TWIRL STUD NUT

Reference page 44 for general fitting and standard finish specifications.



Note: See page 50 for resistance to slip & page 51 for pull-out strength.

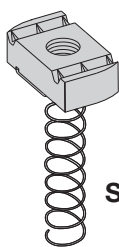
NUT WITHOUT SPRING

Part No.	Thread Size	Fits Channel Sizes	Nut Thickness		Wt./C	
					Lbs.	kg
N221WO	#8-32	All sizes except B62 & B72	1/4"	(6.3)	7.0	(3.17)
N227WO	#10-32	All sizes except B62 & B72	1/4"	(6.3)	7.0	(3.17)
N222WO	#10-24	All sizes except B62 & B72	1/4"	(6.3)	7.0	(3.17)
N224WO	1/4-20	All sizes except B62 & B72	1/4"	(6.3)	6.7	(3.04)
N223WO	5/16-18	All sizes except B62 & B72	1/4"	(6.3)	6.7	(3.04)
N228WO	3/8-16	All sizes except B62 & B72	3/8"	(9.5)	9.3	(4.22)
N226WO	7/16-14	All sizes except B62 & B72	3/8"	(9.5)	8.8	(3.99)
N225WO	1/2-13	B11, B12, B22, B24, B26, B32	1/2"	(12.7)	11.6	(5.26)
N525WO	1/2-13	B42, B52, B54, B56	3/8"	(9.5)	8.8	(3.99)
N255WO	5/8-11	B11, B12, B22, B24, B26, B32	1/2"	(12.7)	16.4	(7.44)
N555WO	5/8-11	B42, B52, B54, B56	3/8"	(9.5)	10.2	(4.62)
N275WO	3/4-10	B11, B12, B22, B24, B26, B32	1/2"	(12.7)	14.5	(6.58)
N575WO	3/4-10	B42, B52, B54, B56	3/8"	(9.5)	8.8	(3.99)
N278WO	7/8-9	B11, B12, B22, B24, B26, B32	1/2"	(12.7)	12.5	(5.67)
Metric Threads						
BMS-6	M6 x 1	All sizes except B62 & B72	1/4"	(6.3)	6.9	(3.13)
BMS-8	M8 x 1.25	All sizes except B62 & B72	1/4"	(6.3)	6.7	(3.04)
BMS-10	M10 x 1.5	All sizes except B62 & B72	3/8"	(9.5)	9.6	(4.35)
BMS-12	M12 x 1.75	All sizes except B62 & B72	3/8"	(9.5)	9.2	(4.17)
BMS-D-12	M12 x 1.75	B11, B12, B22, B24, B26, B32	1/2"	(12.7)	12.2	(5.53)

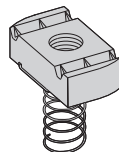
Note: For mini channel nut information see page 203.

Reference page 44 for general fitting and standard finish specifications.

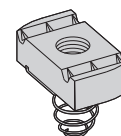
Note: See page 50 for resistance to slip & page 51 for pull-out strength.



700 Series



200 Series



500 Series

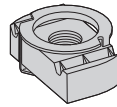
SPRING NUT

Part No.	Thread Size	Fits Channel Sizes	Nut Thickness		Wt./C	
					Lbs.	kg
N721	#8-32	B11 & B12	1/4"	(6.3)	7.0	(3.17)
N221	#8-32	B22, B24, B26, B32	1/4"	(6.3)	7.0	(3.17)
N521	#8-32	B42, B52, B54, B56	1/4"	(6.3)	7.0	(3.17)
N727	#10-32	B11 & B12	1/4"	(6.3)	7.0	(3.17)
N227	#10-32	B22, B24, B26, B32	1/4"	(6.3)	7.0	(3.17)
N527	#10-32	B42, B52, B54, B56	1/4"	(6.3)	7.0	(3.17)
N722	#10-24	B11 & B12	1/4"	(6.3)	7.0	(3.17)
N222	#10-24	B22, B24, B26, B32	1/4"	(6.3)	7.0	(3.17)
N522	#10-24	B42, B52, B54, B56	1/4"	(6.3)	7.0	(3.17)
N724	1/4-20	B11 & B12	1/4"	(6.3)	6.7	(3.04)
N224	1/4-20	B22, B24, B26, B32	1/4"	(6.3)	6.7	(3.04)
N524	1/4-20	B42, B52, B54, B56	1/4"	(6.3)	6.7	(3.04)
N723	5/16-18	B11 & B12	1/4"	(6.3)	6.7	(3.04)
N223	5/16-18	B22, B24, B26, B32	1/4"	(6.3)	6.7	(3.04)
N523	5/16-18	B42, B52, B54, B56	1/4"	(6.3)	6.7	(3.04)
N728	3/8-16	B11 & B12	3/8"	(9.5)	9.3	(4.22)
N228	3/8-16	B22, B24, B26, B32	3/8"	(9.5)	9.3	(4.22)
N528	3/8-16	B42, B52, B54, B56	3/8"	(9.5)	9.3	(4.22)
N726	7/16-14	B11 & B12	3/8"	(9.5)	8.8	(3.99)
N226	7/16-14	B22, B24, B26, B32	3/8"	(9.5)	8.8	(3.99)
N526	7/16-14	B42, B52, B54, B56	3/8"	(9.5)	8.8	(3.99)
N725	1/2-13	B11 & B12	1/2"	(12.7)	11.6	(5.26)
N225	1/2-13	B22, B24, B26, B32	1/2"	(12.7)	11.6	(5.26)
N525	1/2-13	B42, B52, B54, B56	3/8"	(9.5)	8.8	(3.99)
N755	5/8-11	B11 & B12	1/2"	(12.7)	16.4	(7.44)
N255	5/8-11	B22, B24, B26, B32	1/2"	(12.7)	16.4	(7.44)
N555	5/8-11	B42, B52, B54, B56	3/8"	(9.5)	10.2	(4.62)
N775	3/4-10	B11 & B12	1/2"	(12.7)	14.5	(6.58)
N275	3/4-10	B22, B24, B26, B32	1/2"	(12.7)	14.5	(6.58)
N575	3/4-10	B42, B52, B54, B56	3/8"	(9.5)	8.8	(3.99)
N778	7/8-9	B11 & B12	1/2"	(12.7)	12.5	(5.67)
N278	7/8-9	B22, B24, B26, B32	1/2"	(12.7)	12.5	(5.67)
Metric Threads						
BMS-6L	M6 x 1	B11 & B12	1/4"	(6.3)	6.9	(3.13)
BMS-6M	M6 x 1	B22, B24, B26, B32	1/4"	(6.3)	6.9	(3.13)
BMS-6S	M6 x 1	B42, B52, B54, B56	1/4"	(6.3)	6.9	(3.13)
BMS-8L	M8 x 1.25	B11 & B12	1/4"	(6.3)	6.7	(3.04)
BMS-8M	M8 x 1.25	B22, B24, B26, B32	1/4"	(6.3)	6.7	(3.04)
BMS-8S	M8 x 1.25	B42, B52, B54, B56	1/4"	(6.3)	6.7	(3.04)
BMS-10L	M10 x 1.5	B11 & B12	3/8"	(9.5)	9.6	(4.35)
BMS-10M	M10 x 1.5	B22, B24, B26, B32	3/8"	(9.5)	9.6	(4.35)
BMS-10S	M10 x 1.5	B42, B52, B54, B56	3/8"	(9.5)	9.6	(4.35)
BMS-12M	M12 x 1.75	B22, B24, B26, B32	3/8"	(9.5)	9.2	(4.17)
BMS-12S	M12 x 1.75	B42, B52, B54, B56	3/8"	(9.5)	9.2	(4.17)
BMS-D-12L	M12 x 1.75	B11 & B12	1/2"	(12.7)	12.2	(5.53)
BMS-D-12M	M12 x 1.75	B22, B24, B26, B32	1/2"	(12.7)	12.2	(5.53)

Note: For mini channel nut information see page 203.

Reference page 44 for general fitting and standard finish specifications.

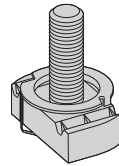
Channel Nuts



Note: See page 50 for resistance to slip & page 51 for pull-out strength.

TWIRL-NUT™ Patented

Part No.	Thread Size	Fits Channel Sizes	Nut Thickness		Wt./C		
					Lbs.	kg	
TN221	#8-32	All sizes except B62 & B72	1/4"	(6.3)	7.0	(3.17)	
TN227	#10-32	All sizes except B62 & B72	1/4"	(6.3)	7.0	(3.17)	
TN222	#10-24	All sizes except B62 & B72	1/4"	(6.3)	7.0	(3.17)	
TN224	1/4-20	All sizes except B62 & B72	1/4"	(6.3)	6.7	(3.04)	
TN223	5/16-18	All sizes except B62 & B72	1/4"	(6.3)	6.7	(3.04)	
TN228	3/8-16	All sizes except B62 & B72	3/8"	(9.5)	9.3	(4.22)	
TN226	7/16-14	All sizes except B62 & B72	3/8"	(9.5)	8.8	(3.99)	
TN225	1/2-13	B11, B12, B22, B24, B26, B32	1/2"	(12.7)	11.6	(5.26)	
TN525	1/2-13	B42, B52, B54, B56	3/8"	(9.5)	8.8	(3.99)	
TN255	5/8-11	B11, B12, B22, B24, B26, B32	1/2"	(12.7)	11.0	(4.99)	
Metric Threads	BMT-6	M6 x 1	All sizes except B62 & B72	1/4"	(6.3)	6.9	(3.13)
	BMT-8	M8 x 1.25	All sizes except B62 & B72	1/4"	(6.3)	6.7	(3.04)
	BMT-10	M10 x 1.5	All sizes except B62 & B72	3/8"	(9.5)	9.6	(4.35)
	BMT-12	M12 x 1.75	All sizes except B62 & B72	3/8"	(9.5)	9.2	(4.17)
	BMT-D-12	M12 x 1.75	B11, B12, B22, B24, B26, B32	1/2"	(12.7)	12.2	(5.53)



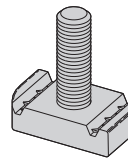
Note: See page 50 for resistance to slip & page 51 for pull-out strength.

TWIRL STUD NUT

Part No.	Thread Size	Fits Channel Sizes	Nut Thickness		Wt./C	
					Lbs.	kg
STN224-*	1/4-20	All sizes except B62 & B72	1/4"	(6.3)	8.1	(3.66)
STN228-*	3/8-16	All sizes except B62 & B72	3/8"	(9.5)	12.9	(5.85)
STN225-*	1/2-13	B11, B12, B22, B24, B26, B32	1/2"	(12.7)	18.2	(8.23)
STN525-*	1/2-13	B42, B52, B54, B56	3/8"	(9.5)	15.4	(6.96)

*Note: Add stud length in inches (3/4, 1, 1 1/4, 1 1/2)

Note: See page 50 for resistance to slip & page 51 for pull-out strength.



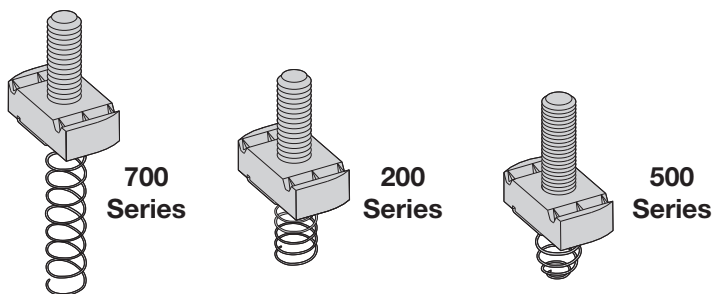
STUD NUT WITHOUT SPRING

Part No.	Thread Size	Fits Channel Sizes	Nut Thickness		Wt./C	
					Lbs.	kg
SN224-*WO	1/4-20	All sizes except B62 & B72	1/4"	(6.3)	8.1	(3.66)
SN228-*WO	3/8-16	All sizes except B62 & B72	3/8"	(9.5)	12.9	(5.85)
SN225-*WO	1/2-13	B11, B12, B22, B24, B26, B32	1/2"	(12.7)	18.2	(8.23)
SN525-*WO	1/2-13	B42, B52, B54, B56	3/8"	(9.5)	15.4	(6.96)

*Note: Add stud length in inches (3/4, 1, 1 1/4, 1 1/2)

Reference page 44 for general fitting and standard finish specifications.

Note: See page 50 for resistance to slip & page 51 for pull-out strength.



STUD NUT WITH SPRING

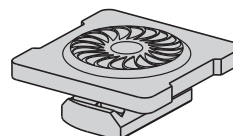
Part No.	Thread Size	Fits Channel Sizes	Nut Thickness		Wt./C	
					Lbs.	kg
SN724-*	1/4-20	B11 & B12	1/4"	(6.3)	8.1	(3.66)
SN224-*	1/4-20	B22, B24, B26, B32	1/4"	(6.3)	8.1	(3.66)
SN524-*	1/4-20	B42, B52, B54, B56	1/4"	(6.3)	8.1	(3.66)
SN728-*	3/8-16	B11 & B12	3/8"	(9.5)	12.9	(5.85)
SN228-*	3/8-16	B22, B24, B26, B32	3/8"	(9.5)	12.9	(5.85)
SN528-*	3/8-16	B42, B52, B54, B56	3/8"	(9.5)	12.9	(5.85)
SN725-*	1/2-13	B11 & B12	1/2"	(12.7)	18.2	(8.23)
SN225-*	1/2-13	B22, B24, B26, B32	1/2"	(12.7)	18.2	(8.23)
SN525-*	1/2-13	B42, B52, B54, B56	3/8"	(9.5)	15.4	(6.96)

*Note: Add stud length in inches (3/4, 1, 1 1/4, 1 1/2)

- Finish: Electrodeposited zinc ASTM B633 SC1
- Available in 316 stainless steel - add SS6 to part number
- To lock combo nut washer in place a nex nut (sold separately) is required

Note: See page 50 for resistance to slip & page 51 for pull-out strength.

Patent Number
7,604,444



COMBO NUT WASHER

Part No.	Thread Size	Fits Channel Sizes	Nut Thickness		Wt./C	
					Lbs.	kg
NW524	1/4-20	All Channel Sizes	1/4"	(6.3)	11.9	(5.40)
NW528	3/8-16	All Channel Sizes	3/8"	(9.5)	13.8	(6.26)
NW525	1/2-13	All Channel Sizes	3/8"	(9.5)	13.1	(5.94)
NWM6	M6	All Channel Sizes	1/4"	(6.3)	16.6	(7.50)
NWM8	M8	All Channel Sizes	3/8"	(9.5)	15.4	(7.00)
NWM10	M10	All Channel Sizes	1/4"	(6.3)	18.9	(8.57)
NWM12	M12	All Channel Sizes	3/8"	(9.5)	17.7	(8.00)

Reference page 44 for general fitting and standard finish specifications.

Channel Nuts

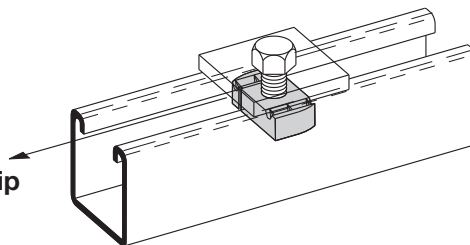
RESISTANCE TO SLIP

• With Safety Factor of 3

Thread Size	Nut Part Numbers	Resistance to Slip					
		12 ga. Channel		14 ga. Channel		16 ga. Channel	
		Lbs.	N	Lbs.	N	Lbs.	N
#8-32	N221, N221WO, N521, N721, TN221	50	220	50	220	50	220
#10-24	N222, N222WO, N522, N722, TN222	100	440	100	440	100	440
#10-32	N227, N227WO, N527, N727, TN227	100	440	100	440	100	440
1/4"-20	NW524*, N224, N224WO, N524, N724, TN224, STN224, SN224WO, SN224, SN524, SN724	300	1330	300	1330	300	1330
5/16"-18	N223, N223WO, N523, N723, TN223	450	2000	450	2000	450	2000
3/8"-16	NW528*, N228, N228WO, N528, N728 TN228, STN228, SN228WO, SN228, SN528, SN728	800	3560	600	2670	600	2670
7/16"-14	N226, N226WO, N526, N726, TN226	1000	4450	800	3560	800	3560
1/2"-13	N225, N225WO, N725, TN225, STN225, SN225WO, SN225, SN725	1500	6670	1000	4450	1000	4450
	NW525*, N525, N525WO, TN525, STN525, SN525WO, SN525	1500	6670	1000	4450	1000	4450
5/8"-11	N255, N255WO, N755, TN255	1500	6670	1000	4450	1000	4450
	N555, N555WO	1500	6670	1000	4450	1000	4450
3/4"-10	N275, N275WO, N775	1500	6670	1000	4450	1000	4450
	N575, N575WO	1500	6670	1000	4450	1000	4450
7/8"-9	N278, N278WO, N778	1500	6670	1000	4450	1000	4450
M6 x 1	BMS-6, BMS-6L, BMS-6M, BMS-6S, BMT-6	300	1330	300	1330	300	1330
M8 x 1.25	BMS-8, BMS-8L, BMS-8M, BMS-8S, BMT-8	450	2000	450	2000	450	2000
M10 x 1.50	BMS-10, BMS-10L, BMS-10M, BMS-10S, BMT-20	800	3560	600	2760	600	2760
M12 x 1.75	BMS-D-12, BMS-D-12L, BMS-D-12M, BMT-D-12	1500	6670	1000	4450	1000	4450
	BMS-12, BMS-12M, BMS-12S, BMT-12	1500	6670	1000	4450	1000	4450

* Combo Nut Washer (see page 49)

Resistance to Slip
of Channel Nut



Note: For mini channel nut information see page 203.

Reference page 44 for general fitting and standard finish specifications.

PULL-OUT STRENGTH

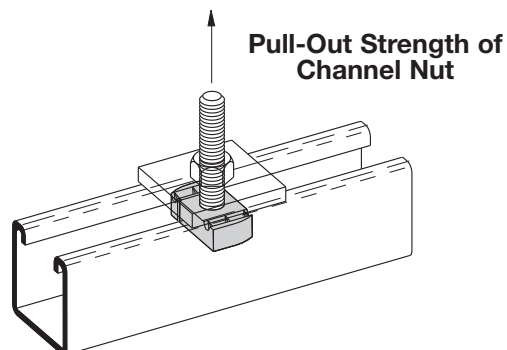
- With Safety Factor of 3
- Maximum pullout strength for B11 & B12 channels is limited to 1500 lbs. (6670 N).

Thread Size	Nut Part Numbers	Pull-Out Strength					
		12 ga. Channel		14 ga. Channel		16 ga. Channel	
		Lbs.	N	Lbs.	N	Lbs.	N
#8-32	N221, N221WO, N521, N721, TN221	200	890	200	890	200	890
#10-24	N222, N222WO, N522, N722, TN222	250	1110	250	1110	250	1110
#10-32	N227, N227WO, N527, N727, TN227	250	1110	250	1110	250	1110
1/4"-20	NW524*, N224, N224WO, N524, N724, TN224, STN224, SN224WO, SN224, SN524, SN724	450	2000	450	2000	450	2000
5/16"-18	N223, N223WO, N523, N723, TN223	750	3330	750	3330	750	3330
3/8"-16	NW528*, N228, N228WO, N528, N728, TN228, STN228, SN228WO, SN228, SN528, SN728	1100	4890	1000	4450	1000	4450
7/16"-14	N226, N226WO, N526, N726, TN226	1500	6670	1200	5340	1000	4450
1/2"-13	N225, N225WO, N725, TN225, STN225, SN225WO, SN225, SN725	2000	8900	1400	6230	1000	4450
	NW525*, N525, N525WO, TN525, STN525, SN525WO, SN525	1500	6670	1400	6230	1000	4450
5/8"-11	N255, N255WO, N755, TN255	2000	8900	1400	6230	1000	4450
	N555, N555WO	1500	6670	1400	6230	1000	4450
3/4"-10	N275, N275WO, N775	2000	8900	1400	6230	1000	4450
	N575, N575WO	1500	6670	1400	6230	1000	4450
7/8"-9	N278, N278WO, N778	1500	6670	1400	6230	1000	4450
M6 x 1	BMS-6, BMS-6L, BMS-6M, BMS-6S, BMT-6	450	2000	450	2000	450	2000
M8 x 1.25	BMS-8, BMS-8L, BMS-8M, BMS-8S, BMT-8	750	3330	750	3330	750	3330
M10 x 1.50	BMS-10, BMS-10L, BMS-10M, BMS-10S, BMT-20	1100	4890	1000	4450	1000	4450
M12 x 1.75	BMS-D-12, BMS-D-12L, BMS-D-12M, BMT-D-12	2000	8900	1400	6230	1000	4450
	BMS-12, BMS-12M, BMS-12S, BMT-12	1500	6670	1400	6230	1000	4450

 Channel Nuts & Hardware
Metric Threads

* Combo Nut Washer (see page 49)

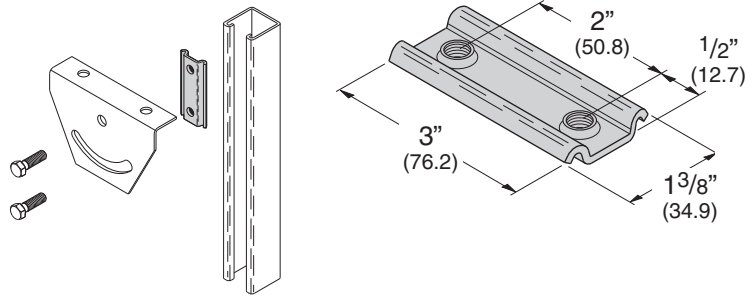
Note: For mini channel nut information see page 203.



Reference page 44 for general fitting and standard finish specifications.

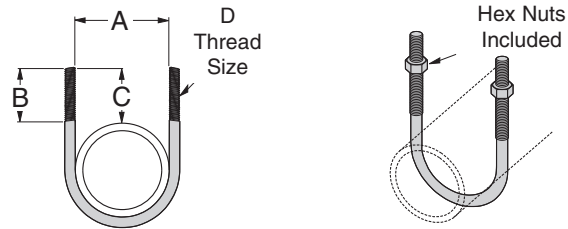
DCN 3/8 DOUBLE CONVEYOR NUT

- Recommended torque - 19 ft./Lbs.
- Allowable slip loading - 700 Lbs.(3.11kN)
- Safety Factor of 3
- Material: ASTM 1011SS Gr. 33
- Finish: Electrodeposited zinc ASTM B633 SC1
- Strut ordered separately



B501 SERIES U-BOLT

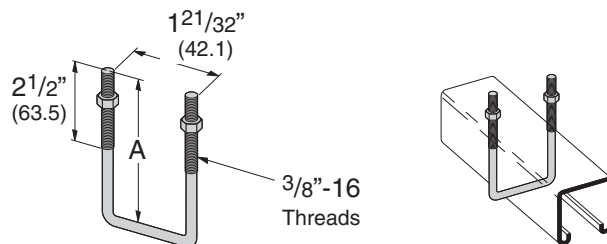
- Designed for use with Rigid Conduit or Iron Pipe
- Dimension "C" is dependent on the type of pipe or conduit supported and is a reference only



Part No.	A		B		C		D	Design Load		Wt./C	
	Lbs.	mm	Lbs.	mm	Lbs.	mm		Lbs.	kN	Lbs.	kg
B501-1/2	15/16"	(23.8)	1 3/4"	(44.4)	1 1/2"	(38.1)	5/16"-18	600	(2.67)	12	(5.4)
B501-3/4	1 1/8"	(28.6)	1 3/4"	(44.4)	1 5/8"	(41.3)	5/16"-18	600	(2.67)	13	(5.9)
B501-1	1 3/8"	(29.9)	1 7/8"	(47.6)	1 5/8"	(41.3)	5/16"-18	900	(4.00)	14	(6.3)
B501-1 1/4	1 23/32"	(43.6)	1 3/4"	(44.4)	1 15/32"	(37.3)	5/16"-18	900	(4.00)	15	(6.8)
B501-1 1/2	2"	(50.8)	1 3/4"	(44.4)	1 7/16"	(36.5)	5/16"-18	900	(4.00)	16	(7.2)
B501-2	2 7/16"	(61.9)	2 1/16"	(52.4)	1 7/8"	(47.6)	3/8"-16	1200	(5.34)	27	(12.2)
B501-2 1/2	2 15/16"	(74.6)	2 1/16"	(52.4)	1 13/16"	(46.0)	3/8"-16	1200	(5.34)	32	(14.5)
B501-3	3 9/16"	(90.5)	2"	(50.8)	1 3/4"	(44.4)	3/8"-16	1800	(8.00)	36	(16.3)
B501-3 1/2	4 3/32"	(94.6)	2"	(50.8)	1 23/32"	(43.6)	3/8"-16	1800	(8.00)	38	(17.2)
B501-4	4 19/32"	(116.7)	2 1/4"	(57.1)	1 21/32"	(50.0)	3/8"-16	1800	(8.00)	42	(19.0)
B501-5	5 21/32"	(143.6)	2 1/4"	(57.1)	2"	(50.8)	1/2"-13	2400	(10.70)	92	(41.7)
B501-6	6 3/4"	(171.4)	2 5/8"	(66.7)	2 3/8"	(60.3)	5/8"-11	2400	(10.70)	176	(79.8)
B501-8	8 3/4"	(222.2)	2 5/8"	(66.7)	2 3/8"	(60.3)	5/8"-11	2400	(10.70)	191	(86.6)

B500 SERIES SQUARE U-BOLT

- Includes:
 - 1 pc. U-Bolt only
 - 2 pcs. 3/8"-16 Hex Nuts
- Additional sizes available
- Standard finish: ZN, SS4

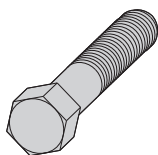


Part No.	A		Channel Size	Wt./C	
	Lbs.	mm		Lbs.	kg
B500-3-3/8	3 3/8"	(85.7)	1 5/8" x 1 5/8"	25	(11.3)
B500-5	5"	(127.0)	3 1/4" x 1 5/8"	33	(14.9)

Reference page 44 for general fitting and standard finish specifications.

HHCS HEX HEAD CAP SCREWS

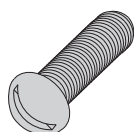
- Standard finish: Zinc-Plated, Stainless Steel



Part No.	Wt./C	
	Lbs.	kg
1/4" x 1/2" HHCS	1.3	(.59)
1/4" x 3/4" HHCS	1.4	(.63)
1/4" x 1" HHCS	1.7	(.77)
1/4" x 1 1/4" HHCS	2.1	(.95)
1/4" x 1 1/2" HHCS	2.4	(1.09)
5/16" x 1" HHCS	2.8	(1.27)
5/16" x 1 1/4" HHCS	3.2	(1.45)
5/16" x 1 1/2" HHCS	3.8	(1.72)
3/8" x 3/4" HHCS	3.4	(1.54)
3/8" x 1" HHCS	4.1	(1.86)
3/8" x 1 1/4" HHCS	4.7	(2.13)
3/8" x 1 1/2" HHCS	5.2	(2.36)
3/8" x 1 3/4" HHCS	5.9	(2.67)
3/8" x 2" HHCS	7.0	(3.17)
3/8" x 2 1/4" HHCS	7.8	(3.54)
3/8" x 2 1/2" HHCS	8.5	(3.85)
1/2" x 7/8" HHCS	8.0	(3.63)
1/2" x 1" HHCS	8.4	(3.81)
1/2" x 1 1/4" HHCS	9.2	(4.17)
1/2" x 1 1/2" HHCS	10.1	(4.58)
1/2" x 1 3/4" HHCS	12.0	(5.44)
1/2" x 2" HHCS	13.2	(5.99)
1/2" x 2 1/2" HHCS	16.0	(7.26)

SRHMS SLOTTED ROUND HEAD MACHINE SCREWS

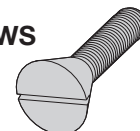
- Standard finish: Zinc-Plated



Part No.	Wt./C	
	Lbs.	kg
1/4" x 1/2" SRHMS	.9	(.41)
1/4" x 3/4" SRHMS	1.2	(.54)
1/4" x 1" SRHMS	1.5	(.68)
1/4" x 1 1/4" SRHMS	1.7	(.77)
1/4" x 1 1/2" SRHMS	1.9	(.86)
5/16" x 1" SRHMS	2.5	(1.13)
5/16" x 1 1/4" SRHMS	2.9	(1.31)
5/16" x 1 1/2" SRHMS	3.3	(1.49)
3/8" x 1" SRHMS	4.0	(1.81)
3/8" x 1 1/4" SRHMS	4.5	(2.04)
3/8" x 1 1/2" SRHMS	5.1	(2.31)
3/8" x 2" SRHMS	6.3	(2.86)
3/8" x 2 1/4" SRHMS	7.1	(3.22)
3/8" x 2 1/2" SRHMS	7.7	(3.49)

SFHMS SLOTTED FLAT HEAD MACHINE SCREWS

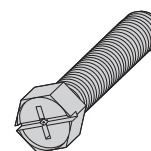
- Standard finish: Zinc-Plated



Part No.	Wt./C	
	Lbs.	kg
1/4" x 1/2" SFHMS	1.1	(.50)
1/4" x 5/8" SFHMS	1.2	(.54)
1/4" x 3/4" SFHMS	1.4	(.63)
5/16" x 1" SFHMS	2.8	(1.27)
3/8" x 1 1/2" SFHMS	5.6	(2.54)
3/8" x 2" SFHMS	6.7	(3.04)
3/8" x 2 1/4" SFHMS	7.3	(3.31)
3/8" x 2 1/2" SFHMS	7.9	(3.58)
1/2" x 1" SFHMS	5.9	(2.67)
1/2" x 1 1/4" SFHMS	7.0	(3.17)
1/2" x 1 1/2" SFHMS	8.3	(3.76)
1/2" x 2 1/2" SFHMS	13.8	(6.26)

SHHMS SLOTTED (COMBINATION RECESS) HEX HEAD MACHINE SCREWS

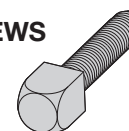
- Standard finish: Zinc-Plated, Stainless Steel



Part No.	Wt./C	
	Lbs.	kg
1/4" x 3/4" SHHMS	1.2	(.54)
1/4" x 1" SHHMS	1.5	(.68)
1/4" x 1 1/4" SHHMS	1.8	(.80)
1/4" x 1 1/2" SHHMS	2.0	(.91)
5/16" x 1" SHHMS	2.6	(1.18)
5/16" x 1 1/4" SHHMS	3.1	(1.40)
5/16" x 1 1/2" SHHMS	3.4	(1.54)
3/8" x 1 1/4" SHHMS	4.6	(2.08)
3/8" x 1 1/2" SHHMS	5.3	(2.40)

CNPSS SQUARE HEAD CONE POINT SET SCREWS

- Standard finish: ZN

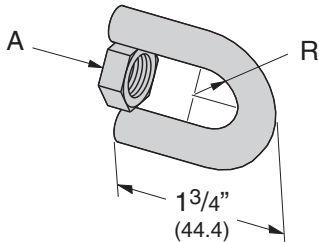


Part No.	Wt./C	
	Lbs.	kg
3/8" x 1 1/2" CNPSS	4.7	(2.13)
3/8" x 2" CNPSS	6.0	(2.72)
1/2" x 1 1/2" CNPSS	9.2	(4.17)
1/2" x 2" CNPSS	11.4	(5.17)
1/2" x 2 1/2" CNPSS	13.7	(6.21)
5/8" x 2" CNPSS	19.0	(8.62)
5/8" x 2 1/2" CNPSS	22.6	(10.25)

Reference page 44 for general fitting and standard finish specifications.

B446A SWIVEL HANGER (FEMALE ONLY)

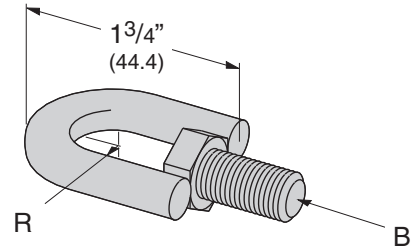
- Design Load:
 - (³/₈)-610 Lbs. (2.71 kN)
 - (¹/₂)-1130 Lbs. (5.02 kN)
 - (⁵/₈)-1810 Lbs. (8.05 kN)
 - (³/₄)-2710 Lbs. (12.05 kN)
- Safety Factor of 3
- Standard finish: ZN



Part No.	A	R	Wt./C	
			Lbs.	kg
B446A- ³ / ₈	³ / ₈ "-16 HN	⁹ / ₃₂ " (7.1)	13	(5.9)
B446A- ¹ / ₂	¹ / ₂ "-13 HN	³ / ₈ " (9.5)	15	(6.8)
B446A- ⁵ / ₈	⁵ / ₈ "-11 HN	¹⁵ / ₃₂ " (11.9)	34	(15.4)
B446A- ³ / ₄	³ / ₄ "-10 HN	⁹ / ₁₆ " (14.3)	45	(20.4)

B446B SWIVEL HANGER (MALE ONLY)

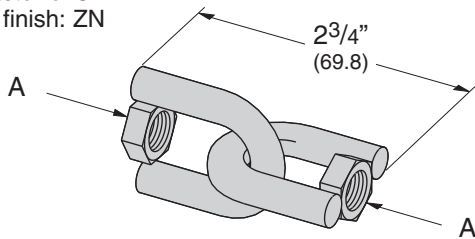
- Design Load:
 - (³/₈)-610 Lbs. (2.71 kN)
 - (¹/₂)-1130 Lbs. (5.02 kN)
 - (⁵/₈)-1810 Lbs. (8.05 kN)
 - (³/₄)-2710 Lbs. (12.05 kN)
- Safety Factor of 3
- Standard finish: ZN



Part No.	B	R	Wt./C	
			Lbs.	kg
B446B- ³ / ₈	³ / ₈ "-16 HHCS	⁹ / ₃₂ " (7.1)	16	(7.2)
B446B- ¹ / ₂	¹ / ₂ "-13 HHCS	³ / ₈ " (9.5)	20	(9.1)
B446B- ⁵ / ₈	⁵ / ₈ "-11 HHCS	¹⁵ / ₃₂ " (11.9)	42	(19.0)
B446B- ³ / ₄	³ / ₄ "-10 HHCS	⁹ / ₁₆ " (14.3)	60	(27.2)

B446C SWIVEL HANGER (FEMALE-FEMALE)

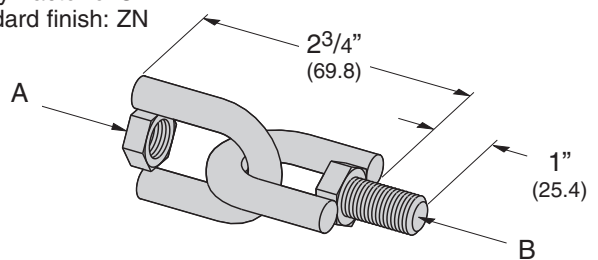
- Design Load:
 - (³/₈)-610 Lbs. (2.71 kN)
 - (¹/₂)-1130 Lbs. (5.02 kN)
 - (⁵/₈)-1810 Lbs. (8.05 kN)
 - (³/₄)-2710 Lbs. (12.05 kN)
- Safety Factor of 3
- Standard finish: ZN



Part No.	A	Wt./C	
		Lbs.	kg
B446C- ³ / ₈	³ / ₈ "-16 HN	26	(11.8)
B446C- ¹ / ₂	¹ / ₂ "-13 HN	31	(14.0)
B446C- ⁵ / ₈	⁵ / ₈ "-11 HN	68	(30.8)
B446C- ³ / ₄	³ / ₄ "-10 HN	90	(40.8)

B446 SWIVEL HANGER (FEMALE-MALE)

- Design Load:
 - (³/₈)-610 Lbs. (2.71 kN)
 - (¹/₂)-1130 Lbs. (5.02 kN)
 - (⁵/₈)-1810 Lbs. (8.05 kN)
 - (³/₄)-2710 Lbs. (12.05 kN)
- Safety Factor of 3
- Standard finish: ZN



Part No.	A	B	Wt./C	
			Lbs.	kg
B446- ³ / ₈	³ / ₈ "-16 HN	³ / ₈ "-16 HHCS	28	(12.7)
B446- ¹ / ₂	¹ / ₂ "-13 HN	¹ / ₂ "-13 HHCS	36	(16.3)
B446- ⁵ / ₈	⁵ / ₈ "-11 HN	⁵ / ₈ "-11 HHCS	78	(35.4)
B446- ³ / ₄	³ / ₄ "-10 HN	³ / ₄ "-10 HHCS	112	(50.8)

Reference page 44 for general fitting and standard finish specifications.

B617 SHOULDER BOLT

- Standard finish: ZN
- Wt./C 6 Lbs. (2.7 kg)

$\frac{3}{8}$ "-16 Thread Size

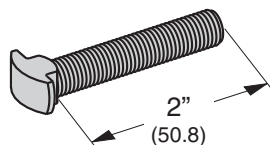
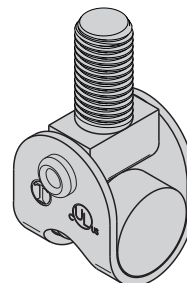


Fig. 75 SWIVEL ATTACHMENT

- Standard finish: ZN
- Sized for $\frac{3}{8}$ "-16 threaded rods
- UL Listed to support up to 4" Pipe per NFPA 13
- Wt./C 13 Lbs. (5.9 kg)



HN HEX NUTS

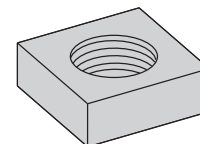
- Standard finish: Zinc-Plated, Stainless Steel



Part No.	Wt./C	
	Lbs.	kg
1/4" HN	.7	(.32)
5/16" HN	1.0	(.45)
3/8" HN	1.5	(.68)
1/2" HN	3.6	(1.63)
5/8" HN	7.2	(3.26)
3/4" HN	11.1	(5.03)
7/8" HN	17.9	(8.12)
1" HN	27.2	(12.34)

MSQN MACHINE SQUARE NUT

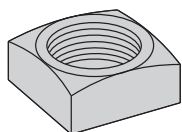
- For use with B755 Beam Clamp
- Standard finish: Zinc-Plated



Part No.	Wt./C	
	Lbs.	kg
MSQN 1/4"	.6	(.27)
MSQN 5/16"	1.2	(.54)
MSQN 3/8"	1.8	(.81)

SQN SQUARE NUTS

- Standard finish: Zinc-Plated

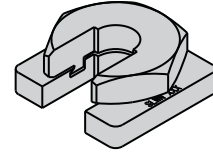


Part No.	Wt./C	
	Lbs.	kg
1/2" SQN	5.7	(2.58)
5/8" SQN	10.1	(4.58)

Reference page 44 for general fitting and standard finish specifications.

Buzznut™

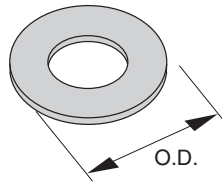
- Can be installed at any desired position on the ATR, eliminating the need to thread hex nuts up along ATR.
- Loading Safety Factor of 3.
- Torque: 6 ft./lbs (8 Nm)
- Available in Zinc Plated or 316 stainless steel.



Part No.	Thread Size	Loading		Wt./C	
		Lbs.	kN	Lbs.	kg
SLWN1/4	1/4-20	240	(1.07)	14.4	(6.5)
SLWN3/8	3/8-16	730	(3.24)	15.4	(7.0)
SLWN1/2	1/2-13	1350	(6.00)	18.8	(8.5)
SLWN5/8	5/8-11	2100	(9.33)	25.4	(11.5)
SLWNM6	M6	200	(0.90)	14.1	(6.4)
SLWNM8	M8	380	(1.70)	16.3	(7.4)
SLWNM10	M10	584	(2.60)	17.2	(7.8)
SLWNM12	M12	840	(3.70)	18.9	(8.6)

FW FLAT WASHERS

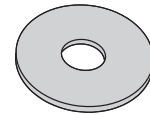
- Standard finish: Zinc-Plated, Stainless Steel



Part No.	O.D. Outside Dia.		Wt./C	
	in.	mm	Lbs.	kg
1/4" FW	47/64"	(18.7)	.7	(.32)
5/16" FW	7/8"	(22.2)	1.4	(.63)
3/8" FW	1"	(25.4)	1.7	(.77)
1/2" FW	1 3/8"	(34.9)	3.9	(1.77)
5/8" FW	1 15/32"	(37.3)	6.4	(2.90)
3/4" FW	2"	(50.8)	10.9	(4.94)
7/8" FW	2 1/4"	(57.1)	13.4	(6.08)
1" FW	2 1/2"	(63.5)	18.8	(8.53)

FFW FLAT FENDER WASHERS

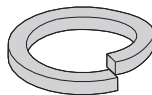
- Standard finish: Zinc-Plated



Part No.	Wt./C	
	Lbs.	kg
1/4" x 1 1/4" FFW	2.2	(1.00)
1/4" x 1 1/2" FFW	3.1	(1.40)
3/8" x 1 1/4" FFW	2.0	(.91)
3/8" x 1 1/2" FFW	3.0	(1.36)
1/2" x 2" FFW	5.4	(2.45)

LW LOCK WASHERS

- Standard finish: Zinc-Plated, Stainless Steel



Part No.	Wt./C	
	Lbs.	kg
1/4" LW	.3	(.13)
5/16" LW	.4	(.18)
3/8" LW	.6	(.27)
1/2" LW	1.3	(.59)
5/8" LW	2.4	(1.09)
3/4" LW	3.8	(1.72)
7/8" LW	5.9	(2.67)
1" LW	8.8	(3.99)

Reference page 44 for general fitting and standard finish specifications.

SC228 HANGER ROD STIFFENER

- For $\frac{3}{8}$ " thru $\frac{5}{8}$ " ATR
- Strut ordered separately
- Standard finish: ZN
- Wt./C 21 Lbs. (9.5 kg)

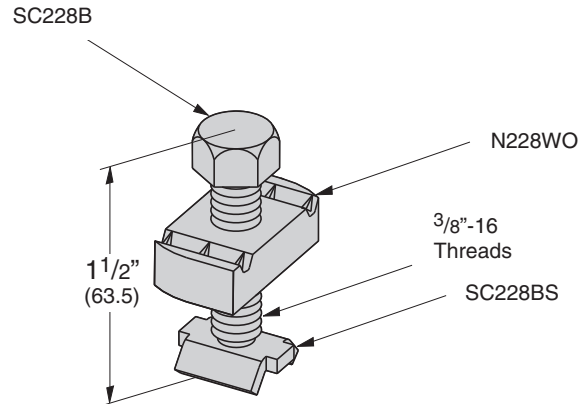
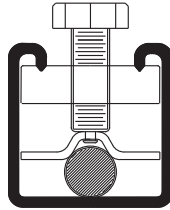


Fig. 98 ROD STIFFENER

- For $\frac{3}{8}$ " thru $\frac{7}{8}$ " ATR
- Use with 12 ga. strut only, ordered separately
- Secures channel to hanger rod for vertical seismic bracing
- Standard finish: ZN
- Wt./C 11 Lbs. (5.0 kg)

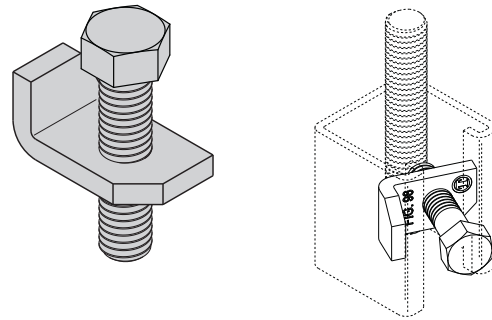
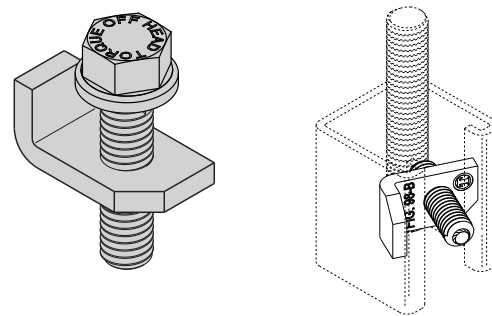


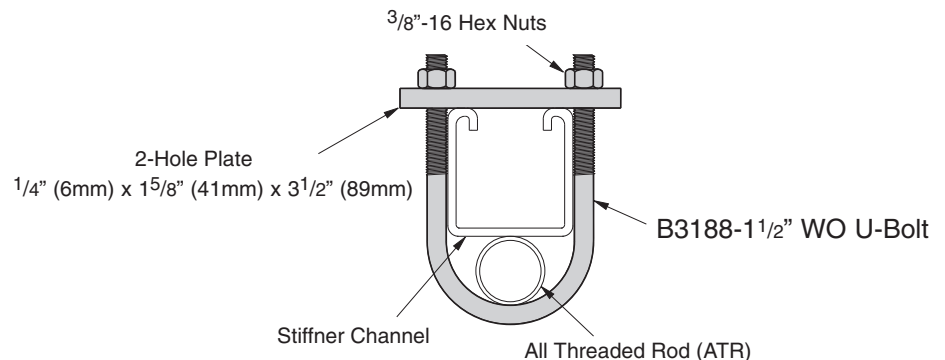
Fig. 98B ROD STIFFENER w/BREAK-OFF BOLT HEAD

- For $\frac{3}{8}$ " thru $\frac{7}{8}$ " ATR
- Use with 12 ga. strut only, ordered separately
- Secures channel to hanger rod for vertical seismic bracing
- Uses a snap-off bolt head
- Standard finish: ZN
- Wt./C 13 Lbs. (5.9 kg)



SC-UB HANGER ROD STIFFENER

- For $\frac{3}{4}$ " thru $\frac{7}{8}$ " ATR
- Strut ordered separately
- Includes: (1) B3188-1 $\frac{1}{2}$ WO U-Bolt
(2) $\frac{3}{8}$ "-16 Hex Nuts
(1) 2-Hole Plate
- Standard finish: ZN
- Wt./C 50 Lbs. (22.7 kg)



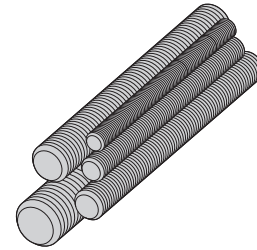
Reference page 44 for general fitting and standard finish specifications.

ATR

ALL THREADED ROD

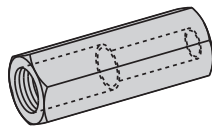
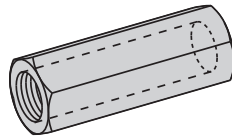
- Available in 36" (91.4 cm), 72" (182.9 cm), 120" (304.8 cm), 144" (365.7 cm) lengths
- Safety Factor of 5 on recommended load
- Standard finish: Zinc-Plated, Stainless Steel Type 304

Part No. & Size	Threads Per Inch	Recommended Load		Wt./C Ft. (3048.0 cm)	
		Lbs.	kN	Lbs.	kg
ATR 1/4"	20	240	(1.07)	12	(5.44)
ATR 5/16"	18	400	(1.78)	19	(8.62)
ATR 3/8"	16	730	(3.24)	29	(13.15)
ATR 1/2"	13	1350	(6.00)	53	(24.04)
ATR 5/8"	11	2160	(9.60)	89	(40.37)
ATR 3/4"	10	3230	(14.37)	123	(55.79)
ATR 7/8"	9	4480	(19.93)	170	(77.11)
ATR 1"	8	5900	(26.24)	225	(102.06)



B655 ROD COUPLING B656 REDUCER ROD COUPLING

- Load rating for each coupler meets All Threaded Rod value
- Standard finish: Zinc-Plated, Stainless Steel Type 304



Part No.	Size	Recommended Load		Length	Wt./C	
		Lbs.	kN		Lbs.	kg
B655-1/4	1/4"-20	240	(1.07)	7/8" (22.2)	1.9	(.86)
B655-5/16	5/16"-18	380	(1.69)	7/8" (22.2)	1.8	(.81)
B655-3/8	3/8"-16	730	(3.24)	1 1/8" (28.6)	3.6	(1.63)
B655-1/2	1/2"-13	1350	(6.00)	1 3/4" (44.4)	11.3	(5.12)
B655-5/8	5/8"-11	1810	(8.05)	2 1/8" (54.0)	17.6	(7.98)
B655-3/4	3/4"-10	2710	(12.05)	2 1/4" (57.1)	28.1	(12.74)
B655-7/8	7/8"-9	3770	(16.77)	2 1/2" (63.5)	57.2	(25.94)
B655-1	1"-8	4960	(22.06)	2 3/4" (69.8)	73.7	(33.43)

Part No.	Size	Recommended Load		Length	Wt./C	
		Lbs.	kN		Lbs.	kg
B656-3/8 x 1/4	3/8"-16 & 1/4"-20	240	(1.07)	1" (25.4)	3.7	(1.68)
B656-1/2 x 3/8	1/2"-13 & 3/8"-16	730	(3.24)	1 1/4" (31.7)	6.6	(2.99)
B656-5/8 x 1/2	5/8"-11 & 1/2"-13	1350	(6.00)	1 1/4" (31.7)	11.6	(5.26)
B656-3/4 x 5/8	3/4"-10 & 5/8"-11	1810	(8.05)	1 1/2" (38.1)	20.6	(9.34)
B656-7/8 x 3/4	7/8"-9 & 3/4"-10	2710	(12.05)	1 3/4" (44.4)	39.4	(17.87)

BHR SERIES HOT RODS FOR TRAPEZE HANGERS

- 12" length of threaded rod completely assembled with rod coupling, locking hex nuts, square washer, and channel nut.
- Standard finish: Zinc-Plated

Part No.	Rod Size	Recommended Load		Wt./C	
		Lbs.	kN	Lbs.	kg
BHR1225ZN	1/4"-20	240	(1.07)	41	(18.6)
BHR1238ZN	3/8"-16	730	(3.24)	63	(28.6)
BHR1250ZN	1/2"-13	1350	(6.00)	98	(44.4)
BHR1262ZN	5/8"-11	1500	(6.67)	148	(67.1)

Note: Based on use with 12 ga. channel.

(BHR1225, BHR1238, and BHR1250 use combo nut washers instead of square washers and channel nuts)

Reference page 44 for general fitting and standard finish specifications.





KwikWire™ Clamps

Part No.	For Use With Wire Rope Diameters	Box Qty.
BKC100	1/16" & 3/32"	100
BKC200	1/8" & 3/16"	50

See table below for KwikWire™ Clamp Working Loads

KwikWire™ Clamp Working Loads*

Clamp Part No.	Wire Rope Dia.	Lbs. Safety Factor 5
BKC100	1/16"	0-75
BKC100	3/32"	25-150
BKC200	1/8"	25-250
BKC200	3/16"	50-640

*Working loads shown are for hanging vertically.

For suspending at 15°, 30°, 45° or 60° angles from vertical, use the following percentage of the working loads from the chart:

15° = 96%
30° = 86%
45° = 70%
60° = 50%



KwikWire™ Wire Rope (Uncoated Galvanized Wire)

Part No.	Rope Dia.		Working Load		Spool
	in.	mm	Lbs.	kg	
BKW063 ⁽¹⁾	1/16"	(1.6)	96	(43.5)	500 ft.
BKW094 ⁽¹⁾	3/32"	(2.3)	184	(83.4)	500 ft.
BKW125 ⁽¹⁾	1/8"	(3.2)	340	(154.2)	500 ft.
BKW188 ⁽²⁾	3/16"	(4.8)	840	(381.0)	250 ft.

(1) Wire Rope Construction Type 7 x 7
(2) Wire Rope Construction Type 7 x 19

Instructions for installing the wire rope in the clamp - No tools are required.



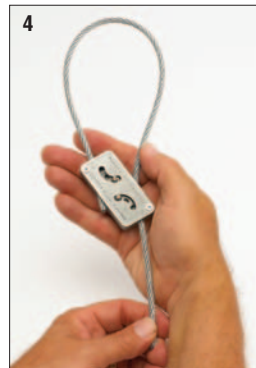
1 Pass the wire rope through the KwikWire™ Clamp



2 Loop wire rope through/around support



3 Pass wire rope back through KwikWire™ Clamp



4 Push wire rope through clamp leaving 2" to 3" tail, then apply tension on wire rope



5 To adjust, remove tension and pull wire rope slightly to disengage teeth, slide adjustment pin in direction shown by arrow to release wire rope.



KwikPak™ Wire Rope & Clamps KwikPak

Part No.	For Use With Wire Rope Diameters	Box Qty.
BKP10063	BKC100 (100 pcs.) 1/16"Ø Wire Rope (500 ft.)	1
BKP10094	BKC100 (100 pcs.) 3/32"Ø Wire Rope (500 ft.)	1
BKP20125	BKC200 (50 pcs.) 1/8"Ø Wire Rope (500 ft.)	1
BKP20188	BKC200 (50 pcs.) 3/16"Ø Wire Rope (250 ft.)	1

KwikPak™ makes handling KwikWire™ a breeze!

- KwikPaks include KwikWire clamps and a spool of wire rope.
- KwikPaks are shipped in a specially designed dispenser box to ease field cutting of wire.

KwikWire™ System Recommendations:

- Do not exceed the safe working load of the products
- KwikWire™ Clamp load ratings are guaranteed only when used in combination with Cooper supplied wire rope
- Do not use for overhead lifting or hoisting
- Do not use if cable or components are visibly distorted or worn. Remove damaged cable end prior to inserting in KwikWire™ Clamp
- Do not paint cable near working area of KwikWire™ Clamp
- Do not apply lubricant
- Keep product clean and free of dirt
- Do not use clamp on coated wire rope
- Do not use in chlorinated or caustic atmospheres
- For use in dry locations
- Cooper's BKCC tool is recommended for cutting wire rope to prevent fraying



KwikWire™ Cable Cutter

Part No.	Box Qty.
BKCC	1

- Wire rope cutter for cutting all wire rope sizes

** *Danger: Never use cutters on energized circuits, wire, or cable.*



- KwikWire hanger combines the versatility of a bolt with an adjustable wire rope solution.
- Can be quickly installed in existing anchors or metal brackets with a nut.
- ARS, ARC, and ARW anchors are ideal for use with KwikWire Hangers.
- Ideal for supporting light fixtures, wire basket cable tray, HVAC ducts, and sign/banner supports.
- Allows for tool-less adjustment of wire rope.

Part No.	Thread Size	Wire Rope Dia.		Loading* SF5	
		in.	mm	Lbs.	kg
BKF100-4	1/4"-20	1/16"	(1.6)	45	(20.4)
		3/32"	(2.3)	90	(40.8)
BKF100-6	3/8"-16	1/16"	(1.6)	45	(20.4)
		3/32"	(2.3)	90	(40.8)

KwikWire™ Hanger installation



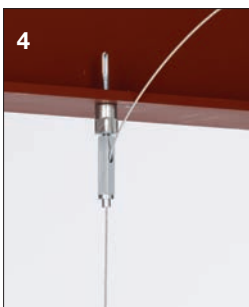
1
Screw KwikWire Hanger into installed hanger support (ARS anchor pictured)



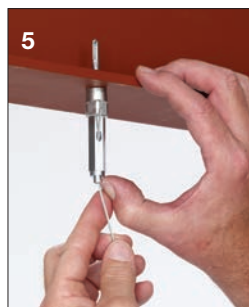
2
Push cable wire up through the bottom of KwikWire Hanger



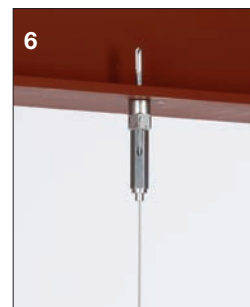
3
Continue pushing through until 1/4" minimum is extending out the side of the KwikWire Hanger



4
To adjust up - pull or push more cable wire through KwikWire Hanger



5
To adjust down - push up on bottom of KwikWire Hanger and allow cable wire to feed down



6
When hanging the cable wire is complete, cut off any excess cable wire if desired

KwikWire Accessory Features

- Reduces on the job installation time
- Can be installed quickly without drilling into existing structure
- Increases versatility in the field
- KwikWire accessory system reduces inventory and shipping costs
- No more sawing, filing, or fixing nuts
- Designed for use with cable tray, lighting, and HVAC
- Eliminates the need for all threaded rod
- Cost effective solution for jack chain
- “Y” style accessories require 50% less drilling



KwikWire Accessory Numbering System

Product Line	Assembly Configuration	Leg Termination	Leg Length	Wire Rope Diameter	Straight Length	Assembly or Kit
BK = KwikWire	Blank = Single Leg Y = 2 Legs 3 = 3 Legs	A = Angle Bracket w/Pin H = Hook L = Loop T = Toggle W = Fuse Cut B25 = Bolt w/ 1/4"-20 Thread B38 = Bolt w/ 3/8"-16 Thread BM6 = Bolt w/ M6 Thread BM8 = Bolt w/ M8 Thread BM10 = Bolt w/ M10 Thread	Blank = See Straight Length 18 = 18" Leg 30 = 30" Leg	063 = 1/16" 094 = 3/32"	Blank = Loop w/ Plastic Tube 18 = 18" 30 = 30" 40 = 40" 80 = 80" 120 = 120" 180 = 180" 240 = 240" 360 = 360"	Blank = Assembly Only K = Kit (Assembly & BKC100 Clamp)

Examples

BKYT18-094-120K

BK **Y** **T** **18** - **094** - **120** **K**

Cooper B-Line KwikWire Accessory

2 legs - toggle leg termination - 18" legs - 3/32" diameter wire - 120" straight length - kit with clamp

BKL-063-120K

BK **L** - **063** - **120** **K**

Cooper B-Line KwikWire Accessory

single leg - looped leg termination - 1/16" diameter wire - 120" straight length - kit with clamp

*Custom assemblies are available as shown by the red dot ● on pages 63 - 70.
Lead time on custom assemblies is 2 to 3 weeks depending on quantities.*

KwikWire™ Loop Termination

Part No.	Wire Rope Dia.		Length	
	in.	mm	in.	mm
● BKL-063-40	1/16"	(1.6)	40"	(1016)
● BKL-063-80	1/16"	(1.6)	80"	(2032)
● BKL-063-120	1/16"	(1.6)	120"	(3048)
● BKL-063-180	1/16"	(1.6)	180"	(4572)
● BKL-063-240	1/16"	(1.6)	240"	(6096)
● BKL-063-360	1/16"	(1.6)	360"	(9144)
● BKL-094-40	3/32"	(2.3)	40"	(1016)
● BKL-094-80	3/32"	(2.3)	80"	(2032)
● BKL-094-120	3/32"	(2.3)	120"	(3048)
● BKL-094-180	3/32"	(2.3)	180"	(4572)
● BKL-094-240	3/32"	(2.3)	240"	(6096)
● BKL-094-360	3/32"	(2.3)	360"	(9144)



Box Quantity - 20
5 bags containing 4 pieces per bag

KwikWire™ Loop Termination Kits

Part No.	Wire Rope Dia.		Length	
	in.	mm	in.	mm
● BKL-063-40K	1/16"	(1.6)	40"	(1016)
● BKL-063-80K	1/16"	(1.6)	80"	(2032)
● BKL-063-120K	1/16"	(1.6)	120"	(3048)
● BKL-063-180K	1/16"	(1.6)	180"	(4572)
● BKL-063-240K	1/16"	(1.6)	240"	(6096)
● BKL-063-360K	1/16"	(1.6)	360"	(9144)
● BKL-094-40K	3/32"	(2.3)	40"	(1016)
● BKL-094-80K	3/32"	(2.3)	80"	(2032)
● BKL-094-120K	3/32"	(2.3)	120"	(3048)
● BKL-094-180K	3/32"	(2.3)	180"	(4572)
● BKL-094-240K	3/32"	(2.3)	240"	(6096)
● BKL-094-360K	3/32"	(2.3)	360"	(9144)



Box Quantity - 20
5 bags containing 4 pieces per bag

Channel Nuts & Hardware

- Available as a wire rope with loop termination only or as a ready-to-use kit with a BKC100 clamp.
- Available in lengths of 40", 80", 120", 180", 240", and 360".

● = Stock item, lead time 2 - 3 working days ● = Non-stock item, lead time 10 - 15 working days

Single Style Hook Termination



Box Quantity - 20
5 bags containing 4 pieces per bag

Part No.	Wire Rope Dia.		Length	
	in.	mm	in.	mm
● BKH-094-40	3/32"	(2.3)	40"	(1016)
● BKH-094-80	3/32"	(2.3)	80"	(2032)
● BKH-094-120	3/32"	(2.3)	120"	(3048)
● BKH-094-180	3/32"	(2.3)	180"	(4572)
● BKH-094-240	3/32"	(2.3)	240"	(6096)
● BKH-094-360	3/32"	(2.3)	360"	(9144)

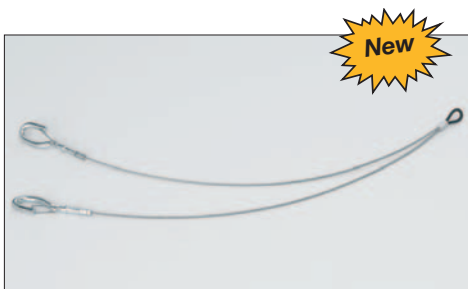
Single Style Hook Termination Kits



Box Quantity - 20
5 bags containing 4 pieces per bag

Part No.	Wire Rope Dia.		Length	
	in.	mm	in.	mm
● BKH-094-40K	3/32"	(2.3)	40"	(1016)
● BKH-094-80K	3/32"	(2.3)	80"	(2032)
● BKH-094-120K	3/32"	(2.3)	120"	(3048)
● BKH-094-180K	3/32"	(2.3)	180"	(4572)
● BKH-094-240K	3/32"	(2.3)	240"	(6096)
● BKH-094-360K	3/32"	(2.3)	360"	(9144)

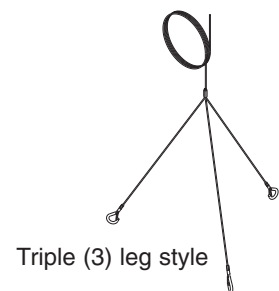
'Y' Style Hook Termination With Loop



Box Quantity - 10
5 bags containing 2 pieces per bag

Part No.	Wire Rope Dia.		Length	
	in.	mm	in.	mm
● BKYH18-094	3/32"	(2.3)	18"	(457)
● BKYH30-094	3/32"	(2.3)	30"	(762)

- Hook designed to accept up to 3/8" diameter wire.
- Available as a wire rope with hook termination only or as a ready-to-use kit with a BKC100 clamp.
- Available in lengths of 40", 80", 120", 180", 240", and 360".
- Available in single, double (Y), and triple (3) leg styles



● = Stock item, lead time 2 - 3 working days ● = Non-stock item, lead time 10 - 15 working days

KwikWire™ 'Y' Style Hook Termination

Part No.	Leg Length		Wire Rope Dia.		Length	
	in.	mm	in.	mm	in.	mm
● BKYH18-094-40	18"	(457)	3/32"	(2.3)	40"	(1016)
● BKYH18-094-80	18"	(457)	3/32"	(2.3)	80"	(2032)
● BKYH18-094-120	18"	(457)	3/32"	(2.3)	120"	(3048)
● BKYH18-094-180	18"	(457)	3/32"	(2.3)	180"	(4572)
● BKYH18-094-240	18"	(457)	3/32"	(2.3)	240"	(6096)
● BKYH18-094-360	18"	(457)	3/32"	(2.3)	360"	(9144)
● BKYH30-094-40	30"	(762)	3/32"	(2.3)	40"	(1016)
● BKYH30-094-80	30"	(762)	3/32"	(2.3)	80"	(2032)
● BKYH30-094-120	30"	(762)	3/32"	(2.3)	120"	(3048)
● BKYH30-094-180	30"	(762)	3/32"	(2.3)	180"	(4572)
● BKYH30-094-240	30"	(762)	3/32"	(2.3)	240"	(6096)
● BKYH30-094-360	30"	(762)	3/32"	(2.3)	360"	(9144)



Box Quantity - 10
5 bags containing 2 pieces per bag

KwikWire™ 'Y' Style Hook Termination Kits

Part No.	Leg Length		Wire Rope Dia.		Length	
	in.	mm	in.	mm	in.	mm
● BKYH18-094-40K	18"	(457)	3/32"	(2.3)	40"	(1016)
● BKYH18-094-80K	18"	(457)	3/32"	(2.3)	80"	(2032)
● BKYH18-094-120K	18"	(457)	3/32"	(2.3)	120"	(3048)
● BKYH18-094-180K	18"	(457)	3/32"	(2.3)	180"	(4572)
● BKYH18-094-240K	18"	(457)	3/32"	(2.3)	240"	(6096)
● BKYH18-094-360K	18"	(457)	3/32"	(2.3)	360"	(9144)
● BKYH30-094-40K	30"	(762)	3/32"	(2.3)	40"	(1016)
● BKYH30-094-80K	30"	(762)	3/32"	(2.3)	80"	(2032)
● BKYH30-094-120K	30"	(762)	3/32"	(2.3)	120"	(3048)
● BKYH30-094-180K	30"	(762)	3/32"	(2.3)	180"	(4572)
● BKYH30-094-240K	30"	(762)	3/32"	(2.3)	240"	(6096)
● BKYH30-094-360K	30"	(762)	3/32"	(2.3)	360"	(9144)



Box Quantity - 10
5 bags containing 2 pieces per bag

Channel Nuts & Hardware

- Hook designed to accept up to 3/8" diameter wire.
- Available as a wire rope with loop termination only or as a ready-to-use kit with a BKC100 clamp.
- Available in lengths of 40", 80", 120", 180", 240", and 360".

● = Stock item, lead time 2 - 3 working days

● = Non-stock item, lead time 10 - 15 working days

KwikWire™ Single Style Toggle Termination



Box Quantity - 20
5 bags containing 4 pieces per bag

Part No.	Wire Rope Dia.		Length	
	in.	mm	in.	mm
● BKT-063-40	1/16"	(1.6)	40"	(1016)
● BKT-063-80	1/16"	(1.6)	80"	(2032)
● BKT-063-120	1/16"	(1.6)	120"	(3048)
● BKT-063-180	1/16"	(1.6)	180"	(4572)
● BKT-063-240	1/16"	(1.6)	240"	(6096)
● BKT-063-360	1/16"	(1.6)	360"	(9144)

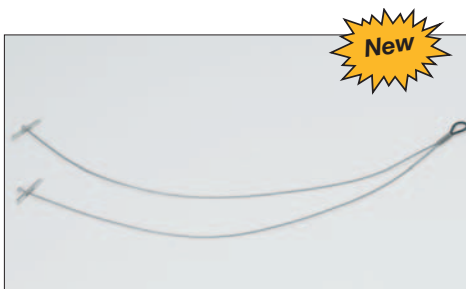
KwikWire™ Single Style Toggle Termination Kits



Box Quantity - 20
5 bags containing 4 pieces per bag

Part No.	Wire Rope Dia.		Length	
	in.	mm	in.	mm
● BKT-063-40K	1/16"	(1.6)	40"	(1016)
● BKT-063-80K	1/16"	(1.6)	80"	(2032)
● BKT-063-120K	1/16"	(1.6)	120"	(3048)
● BKT-063-180K	1/16"	(1.6)	180"	(4572)
● BKT-063-240K	1/16"	(1.6)	240"	(6096)
● BKT-063-360K	1/16"	(1.6)	360"	(9144)

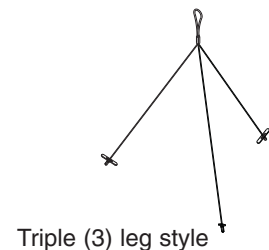
KwikWire™ 'Y' Style Toggle Termination With Loop



Box Quantity - 10
5 bags containing 2 pieces per bag

Part No.	Wire Rope Dia.		Length	
	in.	mm	in.	mm
● BKYT12-063	1/16"	(1.6)	12"	(305)
● BKYT18-063	1/16"	(1.6)	18"	(457)
● BKYT30-063	1/16"	(1.6)	30"	(762)

- Available as a wire rope with toggle termination only or as a ready-to-use kit with a BKC100 clamp.
- Available in lengths of 40", 80", 120", 180", 240", and 360".
- Available in single, double (Y), and triple (3) leg styles
- All triple (3) leg styles are non-stock, consult Cooper B-Line for lead times



● = Stock item, lead time 2 - 3 working days ● = Non-stock item, lead time 10 - 15 working days

KwikWire™ 'Y' Style Toggle Termination

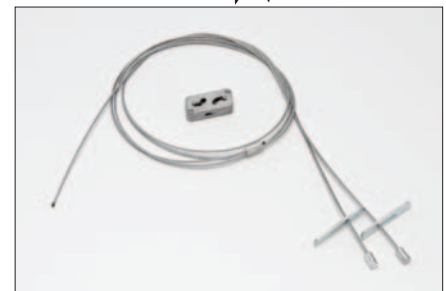
Part No.	Leg Length		Wire Rope Dia.		Length	
	in.	mm	in.	mm	in.	mm
● BKYT12-063-40	12"	(305)	1/16"	(1.6)	40"	(1016)
● BKYT12-063-80	12"	(305)	1/16"	(1.6)	80"	(2032)
● BKYT12-063-120	12"	(305)	1/16"	(1.6)	120"	(3048)
● BKYT12-063-180	12"	(305)	1/16"	(1.6)	180"	(4572)
● BKYT12-063-240	12"	(305)	1/16"	(1.6)	240"	(6096)
● BKYT12-063-360	12"	(305)	1/16"	(1.6)	360"	(9144)
● BKYT18-063-40	18"	(457)	1/16"	(1.6)	40"	(1016)
● BKYT18-063-80	18"	(457)	1/16"	(1.6)	80"	(2032)
● BKYT18-063-120	18"	(457)	1/16"	(1.6)	120"	(3048)
● BKYT18-063-180	18"	(457)	1/16"	(1.6)	180"	(4572)
● BKYT18-063-240	18"	(457)	1/16"	(1.6)	240"	(6096)
● BKYT18-063-360	18"	(457)	1/16"	(1.6)	360"	(9144)
● BKYT30-063-40	30"	(762)	1/16"	(1.6)	40"	(1016)
● BKYT30-063-80	30"	(762)	1/16"	(1.6)	80"	(2032)
● BKYT30-063-120	30"	(762)	1/16"	(1.6)	120"	(3048)
● BKYT30-063-180	30"	(762)	1/16"	(1.6)	180"	(4572)
● BKYT30-063-240	30"	(762)	1/16"	(1.6)	240"	(6096)
● BKYT30-063-360	30"	(762)	1/16"	(1.6)	360"	(9144)



Box Quantity - 10
5 bags containing 2 pieces per bag

KwikWire™ 'Y' Style Toggle Termination Kits

Part No.	Leg Length		Wire Rope Dia.		Length	
	in.	mm	in.	mm	in.	mm
● BKYT12-063-40K	12"	(305)	1/16"	(1.6)	40"	(1016)
● BKYT12-063-80K	12"	(305)	1/16"	(1.6)	80"	(2032)
● BKYT12-063-120K	12"	(305)	1/16"	(1.6)	120"	(3048)
● BKYT12-063-180K	12"	(305)	1/16"	(1.6)	180"	(4572)
● BKYT12-063-240K	12"	(305)	1/16"	(1.6)	240"	(6096)
● BKYT12-063-360K	12"	(305)	1/16"	(1.6)	360"	(9144)
● BKYT18-063-40K	18"	(457)	1/16"	(1.6)	40"	(1016)
● BKYT18-063-80K	18"	(457)	1/16"	(1.6)	80"	(2032)
● BKYT18-063-120K	18"	(457)	1/16"	(1.6)	120"	(3048)
● BKYT18-063-180K	18"	(457)	1/16"	(1.6)	180"	(4572)
● BKYT18-063-240K	18"	(457)	1/16"	(1.6)	240"	(6096)
● BKYT18-063-360K	18"	(457)	1/16"	(1.6)	360"	(9144)
● BKYT30-063-40K	30"	(762)	1/16"	(1.6)	40"	(1016)
● BKYT30-063-80K	30"	(762)	1/16"	(1.6)	80"	(2032)
● BKYT30-063-120K	30"	(762)	1/16"	(1.6)	120"	(3048)
● BKYT30-063-180K	30"	(762)	1/16"	(1.6)	180"	(4572)
● BKYT30-063-240K	30"	(762)	1/16"	(1.6)	240"	(6096)
● BKYT30-063-360K	30"	(762)	1/16"	(1.6)	360"	(9144)



Box Quantity - 10
5 bags containing 2 pieces per bag

Channel Nuts & Hardware

- Available as a wire rope with loop termination only or as a ready-to-use kit with a BKC100 clamp.
- Available in lengths of 40", 80", 120", 180", 240", and 360".

● = Stock item, lead time 2 - 3 working days

● = Non-stock item, lead time 10 - 15 working days

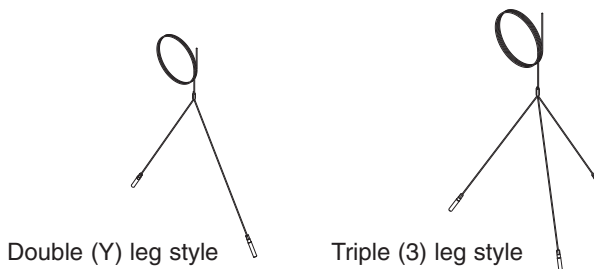
KwikWire™ Bolt Termination



Box Quantity - 20
5 bags containing 4 pieces per bag

Part No.	Thread Size	Wire Rope Dia.		Length	
		in.	mm	in.	mm
● BKB25-063-40	1/4"-20	1/16"	(1.6)	40"	(1016)
● BKB25-063-80	1/4"-20	1/16"	(1.6)	80"	(2032)
● BKB25-063-120	1/4"-20	1/16"	(1.6)	120"	(3048)
● BKB25-063-180	1/4"-20	1/16"	(1.6)	180"	(4572)
● BKB25-063-240	1/4"-20	1/16"	(1.6)	240"	(6096)
● BKB25-063-360	1/4"-20	1/16"	(1.6)	360"	(9144)
● BKB38-094-40	3/8"-16	3/32"	(2.3)	40"	(1016)
● BKB38-094-80	3/8"-16	3/32"	(2.3)	80"	(2032)
● BKB38-094-120	3/8"-16	3/32"	(2.3)	120"	(3048)
● BKB38-094-180	3/8"-16	3/32"	(2.3)	180"	(4572)
● BKB38-094-240	3/8"-16	3/32"	(2.3)	240"	(6096)
● BKB38-094-360	3/8"-16	3/32"	(2.3)	360"	(9144)

- Ideal for use with ARS, ARC, ADI, ACPW, or ACPD anchors.
- Available as a wire rope with bolt termination only or as a ready-to-use kit with a BKC100 clamp.
- Available in lengths of 40", 80", 120", 180", 240", and 360".
- Available in single, double (Y), and triple leg (3) styles
- All (Y) and triple (3) styles are non-stock, consult Cooper B-Line for lead times



● = Stock item, lead time 2 - 3 working days ● = Non-stock item, lead time 10 - 15 working days



Bolt Termination Kits

Part No.	Thread Size	Wire Rope Dia.		Length	
		in.	mm	in.	mm
● BKB25-063-40K	1/4"-20	1/16"	(1.6)	40"	(1016)
● BKB25-063-80K	1/4"-20	1/16"	(1.6)	80"	(2032)
● BKB25-063-120K	1/4"-20	1/16"	(1.6)	120"	(3048)
● BKB25-063-180K	1/4"-20	1/16"	(1.6)	180"	(4572)
● BKB25-063-240K	1/4"-20	1/16"	(1.6)	240"	(6096)
● BKB25-063-360K	1/4"-20	1/16"	(1.6)	360"	(9144)
● BKB38-094-40K	3/8"-16	3/32"	(2.3)	40"	(1016)
● BKB38-094-80K	3/8"-16	3/32"	(2.3)	80"	(2032)
● BKB38-094-120K	3/8"-16	3/32"	(2.3)	120"	(3048)
● BKB38-094-180K	3/8"-16	3/32"	(2.3)	180"	(4572)
● BKB38-094-240K	3/8"-16	3/32"	(2.3)	240"	(6096)
● BKB38-094-360K	3/8"-16	3/32"	(2.3)	360"	(9144)



Box Quantity - 20
5 bags containing 4 pieces per bag

- Ideal for use with ARS, ARC, ADI, ACPW, or ACPD anchors.
- Available as a wire rope with bolt termination only or as a ready-to-use kit with a BKC100 clamp.
- Available in lengths of 40", 80", 120", 180", 240", and 360".
- Available in single, double (Y), and triple (3) styles
- All double (Y) and triple (3) styles are non-stock, consult Cooper B-Line for lead times



Double (Y) leg style



Triple (3) leg style

● = Stock item, lead time 2 - 3 working days

● = Non-stock item, lead time 10 - 15 working days

KwikWire™ Angle Bracket Termination



Box Quantity - 20
5 bags containing 4 pieces per bag

Part No.	Wire Rope Dia.		Length	
	in.	mm	in.	mm
● BKA-063-40	1/16"	(1.6)	40"	(1016)
● BKA-063-80	1/16"	(1.6)	80"	(2032)
● BKA-063-120	1/16"	(1.6)	120"	(3048)
● BKA-063-180	1/16"	(1.6)	180"	(4572)
● BKA-063-240	1/16"	(1.6)	240"	(6096)
● BKA-063-360	1/16"	(1.6)	360"	(9144)

KwikWire™ Angle Bracket Termination Kits



Box Quantity - 20
5 bags containing 4 pieces per bag

Part No.	Wire Rope Dia.		Length	
	in.	mm	in.	mm
● BKA-063-40K	1/16"	(1.6)	40"	(1016)
● BKA-063-80K	1/16"	(1.6)	80"	(2032)
● BKA-063-120K	1/16"	(1.6)	120"	(3048)
● BKA-063-180K	1/16"	(1.6)	180"	(4572)
● BKA-063-240K	1/16"	(1.6)	240"	(6096)
● BKA-063-360K	1/16"	(1.6)	360"	(9144)

- Available as a wire rope with angle bracket termination only or as a ready-to-use kit with a BKC100 clamp.
- Available in lengths of 40", 80", 120", 180", 240", and 360".

● = Stock item, lead time 2 - 3 working days ● = Non-stock item, lead time 10 - 15 working days

