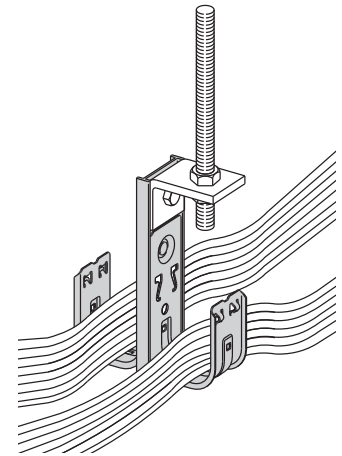
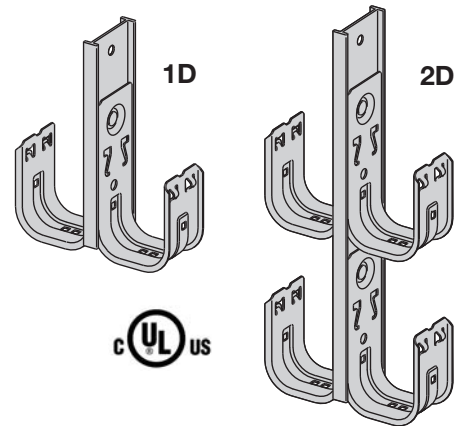


Double-Sided Multi-Tier Cable Fasteners

- Factory assembled multi-tier fasteners increase installation flexibility
- Unique design prevents hooks and assembly from rotating when pulling cable
- All support bars furnished in 6063-T6 aluminum
- Shown (at right) with optional BCHK2 kit
- Qwik-Latch™ cable retainers included (not shown on drawings)
- Designed to accept cable ties
- Static Load Capacity: (per hook) 30 Lbs. (13.6kg)



Part Number	Hook Size		Overall Height		Wt. Per 100	
	In.	(mm)	In.	(mm)	Lbs.	(kg)
BCH21-1D	1 ⁵ / ₁₆ "	(33.3)	5 ¹ / ₂ "	(140)	46.0	(20.8)
BCH32-1D	2"	(50.8)	6 ³ / ₁₆ "	(157)	63.0	(28.6)
BCH64-1D	4"	(101.6)	9"	(228)	144.0	(65.3)
BCH21-2D	1 ⁵ / ₁₆ "	(33.3)	9 ¹ / ₄ "	(234)	101.0	(45.8)
BCH32-2D	2"	(50.8)	11"	(279)	112.0	(50.8)
BCH64-2D	4"	(101.6)	18 ¹ / ₄ "	(463)	287.0	(130.2)

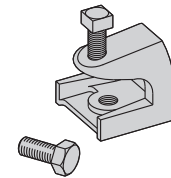


Note: Part numbers listed above are for galvanized hooks - Add "SS4" for Stainless Steel or add "H" for Zinc-Plated Spring Steel for heavy-duty applications.

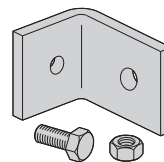
Patent #5961081

Multi-Tier Attachment Kits

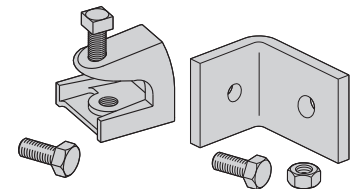
- Kits permit secure attachment of single-tier and multi-tier fasteners.
- BCHK1 includes:
 - 1 ea. beam clamp (B444-1/4)
 - 1 ea. 1/4"-20 x 1/2" hex head cap screw
- BCHK2 includes:
 - 1 ea. angle bracket (with .320"Ø and .390"Ø holes)
 - 1 ea. 5/16"-18 x 3/4" hex head cap screw
 - 1 ea. 5/16"-18 hex nut
- BCHK3 includes:
 - 1 ea. BCHK1 Kit
 - 1 ea. BCHK2 Kit



BCHK1
Beam Clamp



BCHK2
Angle Bracket



BCHK3
Beam Clamp with
Angle Bracket
(Swivels 360°)

Part Number	Flange Thickness		Wt. Per 100	
	In.	(mm)	Lbs.	(kg)
BCHK1	thru 5/8"	(thru 15.9)	27.0	(12.2)
BCHK2	--	--	43.0	(19.5)
BCHK3	thru 5/8"	(thru 15.9)	67.0	(30.4)