



## One Cooper Spotlight

Cooper, as an end-to-end partner, can smooth the transition to a Smarter Grid.



## ONE COOPER SPOTLIGHT | JANUARY 2012

### OPTIMIZING EFFICIENCY, PRODUCTIVITY AND RELIABILITY

Power providers must meet current needs while planning for future changes. At Cooper Power Systems, Smart Solutions for a Smarter Grid begin with:

- Intelligent field apparatus to monitor and respond to system parameters; operating locally, or monitored and controlled remotely.
- Software platform comprised of a suite of modules for energy optimization and control.
- Communications flexibility to cost-effectively meet application and service area requirements, and ensure data is securely transmitted to and from apparatus and enterprise systems.

With a comprehensive portfolio of intelligent apparatus, controls, software, communications networks, and 100 years of field-proven engineering expertise, we are uniquely positioned to deliver on end-user expectations and impact our customer's bottom-line.

As an end-to-end partner, we can smooth the transition through:

- Advanced Metering Infrastructure
- Demand Response
- Engineering Analysis, Optimization and Modeling Tools
- Self-Healing Grid
- Substation Automation
- Volt/Var Management

See Cooper Power Systems Smarter Grid Solutions at:  
[www.cooperpower.com/smart](http://www.cooperpower.com/smart)

### what's INSIDE

- 1: *Smart Grid Solutions*
- 2: *Training & Events*
- 3: *Experience Smart Grid*
- 4: *New Products*
- 5: *Cooper Lighting Revit File Availability*
- 6: *CTC & SOURCE 2012 Curriculum*



## Training & Events

Mark your calendar for the following upcoming training and events:

### January 2012

Su	Mo	Tu	We	Th	Fr	Sa
1	2	3	4	5	6	7
8	9	10	11	12	13	14
15	16	17	18	19	20	21
22	23	24	25	26	27	28
29	30	31				

### February 2012

Su	Mo	Tu	We	Th	Fr	Sa
			1	2	3	4
5	6	7	8	9	10	11
12	13	14	15	16	17	18
19	20	21	22	23	24	25
26	27	28	29			

#### January 23–25

AHR EXPO | Chicago, IL

#### January 24–26

DistribUTECH Conference & Exhibition | San Antonio, TX

#### January 30–February 1

Mine Site Automation & Communication | Tucson, AZ

#### February 1–4

NEMRA 2012 Annual Conference | San Diego, CA

#### February 5–10

2012 Life of a Transformer | Lake Buena Vista, FL

#### February 6–9

TechAdvantage | San Diego, CA

#### February 8–11

NAHB IBS International Home Builders Show | Orlando, FL

## EXPERIENCE SMART SOLUTIONS FOR A SMARTER GRID



A leader in the electrical distribution industry, Cooper Power Systems will simulate power system faults and recovery actions utilizing our comprehensive suite of integrated apparatus, software and communications at several utility conferences in 2012:

- DistribUTECH: January 24–26 in San Antonio, TX, Booth #633
- TechAdvantage: February 6–9 in San Diego, CA, Booth #620
- 2012 IEEE PES Transmission and Distribution Conference and Exposition: May 7–10 in Orlando, FL, Booth #2063

### Experience live demonstrations, including:

- Volt/Var Management—Cooper Power Systems integrates Voltage Regulator Control with Yukon™ IVVC platform software and patented Tap-Changer for superior energy efficiency. With added communications and Yukon IVVC, improve power factor control and bring intelligence to your Capacitor Bank switching.
- Self-Healing Grid—Improve distribution fault protection and reliability metrics with the NOVA™ STS single-tank, triple-single recloser, and the Automated M-Force switch, both with integrated controls and Yukon advanced energy services platform.

### 2011 Smart Grid Awards and Certifications:

- Cooper Power Systems Wins “Best Smart Grid Product or Solution” Award at 2011 Rural Smart Grid Summit
- Cooper Power Systems Awarded the First Achilles Communications Certified Data Concentrator for the Energy Sector
- CYME™ Power System Analysis Software Selected for Simulation Modeling for NSERC\* Smart Microgrid Network (NSMG-Net)

\* Natural and Engineering Research Council of Canada

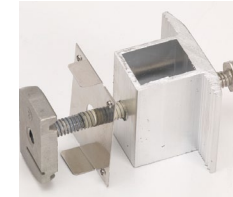
## NEW PRODUCT ANNOUNCEMENTS



**KwikWire Hanging Accessories**

**COOPER B-LINE** KwikWire Hanging System now includes UL Listed KwikWire accessories, offering a wider range of installation and hanging methods. With cut to length solutions, customers can substantially reduce installation time.

**Key Markets**  
Electrical, Mechanical, Communications/Data



**Module Clamps with Integrated Grounding with WEBB-WMC**

**COOPER B-LINE** Used to bond solar modules to the Cooper B-Line ARISTA™ Racking System, it eliminates the need for separate ground lugs and copper wire between each module when grounding solar PV panels.

**Key Markets**  
Solar



**1000Vdc PV Fuses**

**COOPER BUSSMANN** With up to a 70% smaller Footprint, the UL 2579 Listed PV CUBEFuse delivers fast-acting protection designed for low-fault current conditions that occur in PV systems.

**Key Markets**  
Solar



**PV CUBEFuse**

**COOPER BUSSMANN** Delivering up to 70% Smaller Footprint, this UL 2579 Listed product delivers protection specifically designed for low-fault current conditions that occur in PV systems.

**Key Markets**  
Solar



**PowerMate Drilling Series Pin & Sleeve Devices**

**COOPER CROUSE-HINDS** PowerMate provides quick, safe and reliable connectivity of power supplies for land-based drilling rigs. Listed for use with Type P cable.

**Key Markets**  
Land-Based Drilling



**Corelite R6 Luminaire**

**COOPER LIGHTING** Designed to meet or exceed the most demanding energy requirements, the R6 narrow aperture luminaire blends seamlessly into today's modern environments and is available in T5, T5HO, T8, and LED.

**Key Markets**  
Commercial, Educational



**Corelite R2 LED Luminaire**

**COOPER LIGHTING** Now available in LED in 2' x 2', 2' x 4' and 1' x 4' fixture sizes, the R2 is known for its ultra shallow profile and unique prism design and is extremely versatile in plenum restricted applications.

**Key Markets**  
Commercial, Educational



**Lumière Next Generation LED MR16 Module**

**COOPER LIGHTING** The LED module upgrade delivers improved lumen output and efficiency and offers a high and low power option (10W or 6W). The dimmable module is available in 4 color temperatures and 3 beam angles.

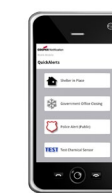
**Key Markets**  
Outdoor Landscape Applications



**ControlKeeper MB with Circuit Breakers (CKMB)**

**COOPER LIGHTING CONTROLS** The ControlKeeper MB provides control of up to 48 relays per panel with integral circuit breakers as well as discrete inputs for occupancy sensors, low voltage switches and other input devices.

**Key Markets**  
Commercial, Industrial



**RSAN 6.6**

**COOPER SAFETY NOTIFICATION** The latest version of the Roam Secure Alert Network (RSAN), RSAN 6.6, features Location-based Services (LBS) and RSAN Mobile applications, providing faster access for sending critical alerts.

**Key Markets**  
Government, Commercial, Industrial



**Wall/Corner Mounted Lighting Control Sensor**

**COOPER WIRING DEVICES** Wall/corner mounted lighting control sensor provides complete coverage of various types of rooms and hallways. Intelligent, self-adjusting time delay optimizes set-up time and energy savings.

**Key Markets**  
Commercial

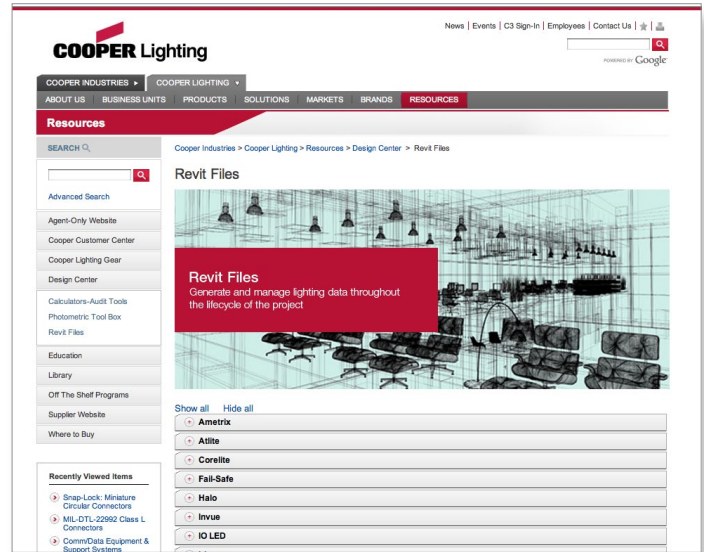
## COOPER LIGHTING REVIT FILE AVAILABILITY

Cooper Lighting is pleased to announce the availability of Revit files for over 1,400 products spanning 19 of our leadership brands via the Cooper Lighting website.

These BIM (Building Information Modeling) files can be downloaded from the Specification Sheets and Downloads tab on product landing pages or via the Revit Files page within the Design Center [www.cooperlighting.com/Revit](http://www.cooperlighting.com/Revit). You can also [click here](#) to search and download our files from the Autodesk Seek website.

### Cooper Lighting Revit File Benefits

- Families designed for streamlined workflow between architects and MEP engineers in Revit Architecture and Revit MEP, respectively. (Our files work in both applications.)
- Links to each product web-landing page and Specification Sheet embedded in each Revit Family.
- Appropriate MEP electrical parameters for engineer's circuit, loading and balancing work in Revit MEP.
- Optimized Revit Family file size with geometry created natively in the Revit Family Editor—no AutoCAD imports.
- Ordering and product configuration options embedded for more complete scheduling and specification writing directly from Revit project files.
- True IES photometric files (where available).
- Accurate fixture geometry for BIM clash detection workflows.

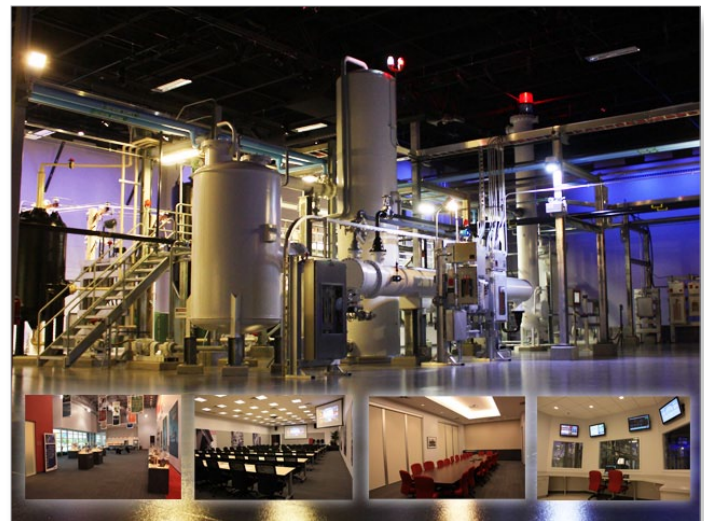


## COOPER TECHNOLOGY CENTER AND THE SOURCE INTRODUCE 2012 CURRICULUM

The [Cooper Technology Center](#) is dedicated to the ongoing training and education of end-users, distributors, engineers, and procurement professionals. Located in Houston, the state-of-the-art training facility features a theatre-style auditorium, executive conference room, product training rooms, and full-scale mock refinery designed to help facilitate industry-specific education and hands-on demonstrations of Cooper's product offerings. The Cooper Technology Center offers a broad set of training courses within numerous markets designed to fulfill customers' needs and deliver technical expertise. Access the Cooper Technology Center 2012 curriculum at <http://webtools.cooperindustries.com/techCenter/classes/index.cfm>.

The [SOURCE](#), the industries' leading lighting education facility, is located at Cooper Lighting's headquarters in Peachtree City, Georgia and offers a wide variety of seminars designed to

broaden the understanding of lighting and its applications. The SOURCE has been servicing the lighting industry for over twenty years and to date, over 100,000 individuals have benefited from the SOURCE experience. Access the 2012 SOURCE calendar of educational classes for the lighting and design community and register at <http://webtools.cooperindustries.com/lighting/classes>.



The trade names and brand names contained herein are valuable trademarks of Cooper Industries in the U.S. and other countries. You are not permitted to use the Cooper Trademarks without the prior written consent of Cooper Industries.

Cooper US, Inc.  
600 Travis, Ste. 5600  
Houston, TX 77002-1001  
P: 713-209-8400  
[www.cooperindustries.com](http://www.cooperindustries.com)

